

TO: Mercedes-Benz Dealer Principals, General Managers, Sales Managers, Service Managers, Parts Managers	FROM: Gregory Gunther, Senior Manager, Vehicle Compliance and Analysis, Engineering Services
RE: <b>Emission Service Campaign Launch Notification</b> <b>Apply an additional VECI Label</b> <b>MY22-24 EQE, EQS (294, 295, 296 and 297 platforms)</b>	DATE: February 27, 2025

## IMPORTANT NEW EMISSION SERVICE CAMPAIGN LAUNCH

Please note that all customer inquiries should be directed to the Customer Care Center at 1-800-FOR-MERCEDES (1-800-367-6372).

Sincerely,

Gregory Gunther

Senior Manager, Vehicle Compliance & Analysis



<b>Emission Service Campaign Launch Notification</b>			February 27, 2025
<b>Campaign No.:</b>	<b>CA DMV No.:</b>	<b>Campaign Desc.:</b>	<b>Apply An Additional VECI Label</b>
2025010004	N/A	24P5891749	
<p>This is to notify you of an <b>Emission Service Campaign</b> to apply an additional VECI Label on <b>70,052</b> Model Year (“MY”) 2022-2024 EQE and EQS (294, 295, 296, and 297 platforms) vehicles. The affected vehicles will be visible and flagged in VMI as “OPEN” on <b>February 28, 2025</b>.</p>			
<b>Background</b>			
<b>Issue</b>	Mercedes-Benz AG (“MBAG”), the manufacturer of Mercedes-Benz, has determined that on certain MY 2022-2024 EQE and EQS (294, 295, 296, and 297 platforms) vehicles, the Vehicle Emissions Control Information (VECI) label in the engine compartment may not be readily visible to a customer, since the Operator’s Manual directs that only workshop personnel are permitted to open the hood.		
<b>What We’re Doing</b>	MBUSA will conduct an Emission Service Campaign. An authorized Mercedes-Benz dealer will apply an additional VECI Label on the driver’s door of affected vehicles, so that the label is readily visible to the customer. Affected customers will be notified via First Class letter to have the additional VECI label on the driver’s door of their vehicles.		
<b>Parts</b>	<b>The remedy is available and can be performed as necessary.</b>		
<b>Vehicles Affected</b>			
<b>Vehicle Model Year(s)</b>	2022 - 2024		
<b>Vehicle Model</b>	EQE, EQS (294, 295, 296, 297 Platforms)		
<b>Vehicle Populations</b>			
<b>Total Campaign Population</b>	70,052		
<b>Next Steps/Notes</b>			
<b>Customer Notification Timeline</b>	Customer letters will be mailed on March 14, 2025		
<b>AOMS/SOMS</b>	AOMs - This campaign may generate questions from your dealers.		
<p>While we regret any inconvenience this may cause, MBUSA is determined to maintain a high level of vehicle quality and customer satisfaction. Please refer all customer inquiries to the Customer Care Center at 1-800-FOR-MERCEDES.</p>			



# Service Campaign Bulletin



Mercedes-Benz

Campaign No. 2025010004, February 2025

TO: ALL MERCEDES-BENZ CENTERS

SUBJECT: **Model EQE and EQS (294, 295, 296 & 297 platform)**  
**Model Year 2022 – 2024**

### **Apply Additional VECI Label**

Mercedes-Benz AG, the manufacturer of Mercedes-Benz vehicles, has determined that on certain MY 2022-2024 EQE and EQS (294, 295, 296 & 297 platform) vehicles, the Vehicle Emission Control Information (VECI) label in the engine compartment may not be readily visible to customers, since the Operator's Manual directs that only workshop personnel are permitted to open the hood. An authorized Mercedes-Benz dealer will attach an additional VECI label on the driver's door of affected vehicles so that the label is readily visible to the customer.

Prior to performing this Campaign:

- **VMI must be checked before performing campaigns to verify that the campaign is required on a specific vehicle. Always check for any other open campaigns and perform accordingly.**
- Please review the entire Campaign bulletin and follow the repair procedure exactly as described.

Approximately 70,052 vehicles are affected.

Order No. P-SC-2025010004

Service Campaign Bulletin

Service Campaign Bulletin

Service Campaign Bulletin

Service Campaign Bulletin

Service Campaign Bulletin

## Apply Additional VECI Label

Models: 294, 295, 296 & 297


### Primary Parts Information

Qty.	Part Name	Part Number
1	VECI Label	_*

*\* The required replacement parts for the equipment variant must be determined according to the vehicle identification number (VIN) via the XENTRY Parts Information system.*

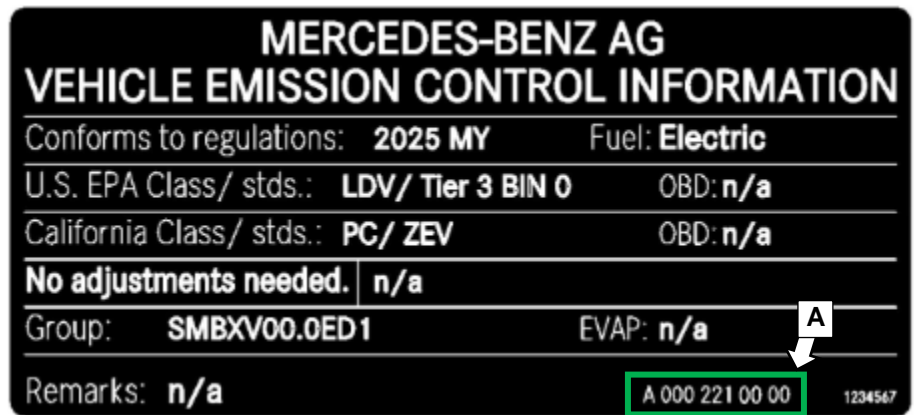
The part number on the new VECI label must match your specific Baumuster and Model Year below:

Baumuster	Model Year	Part Number	Baumuster	Model year	Part Number	
294612	23	A0002214600	296624	23	A0002213800	
	24	A0002215200		24	A0002215900	
294621	23	A0002214200		296644	23	A0002213800
	24	A0002215300			24	A0002215900
294622	23	A0002214100		296955	24	A0002216100
	24	A0002215400			24	A0002216600
294653	24	A0002215100		297123	22	A0002212600
					23	A0002213200
24	A0002216200					
295112	23	A0002213600		297124	22	A0002212600
	24	A0002215700			23	A0002213900
295121	23	A0002213500			24	A0002216400
	24	A0002215600				
295122	23	A0002213600		297144	22	A0002212700
	24	A0002215500			23	A0002213300
295153	23	A0002213400				24
	24	A0002215800	297155	22		A0002212800
296623	23	A0002213700			23	A0002213100
	24	A0002216000	24		A0002216500	

 Small parts such as screws, lock nuts, sealing rings, cable ties, fluids, sealant, etc. are not listed in the parts list. The required small parts are taken into account in the budgeting.

## Work Procedure

1. Open driver's door.
2. Clean the bonding point on driver's door (**Figure 1, 1**) with a suitable cleaning agent before attaching the new exhaust gas cleaning information label (**Figure 2, 1**).



**Figure 1:** New position of VECI label

**Figure 2:** VECI label (example)

3. Check that the new label part number (**Figure 2, A**) matches the part number in the table above for the respective Baumuster and Model Year of the vehicle.
4. Attach the new VECI label (**Figure 2**) in the new position on the driver's door (**Figure 1, 1**).

**i** **Note:** The following allowable labor operation should be used when submitting a warranty claim for this repair.

## Warranty Information

Damage Code	Operation Number	Description	Labor Time (hrs.)
58 917 49	02-1500**	Operations: Attach VECI label Acc. no.: 58 917 49, code: 24P5891749	0.1

\*\* Please enter the code and accounting number manually in the workshop order as per the work instructions.

**i** **Note:** Always check Xentry Operation Time (XOT) for the current OP-Code times. Labor times are subject to change and updates may not be reflected in this document.