



PERSONAL SERVICE LAB

MASTERS OF CARE

Grecale Front Door Panel Wiring

DATE: FEBRUARY 20, 2025

This Diagnostic Sheet serves as a guide and provides additional diagnostic info for possible issues related to the front door panel wiring on Grecale's.

MODELS: M182 Grecale (All MY).

TechDocs section:

Electric System → CABLE INDEX: CA0004 → Front door panel wiring, driver side, CA0005 - Front door panel wiring, passenger side. Workshop Manual → 00.30-1 → CABLES AND CONNECTORS REPAIR 00.30.005 80

Customer concern: Door opening malfunctions when using the switch, but no issue when using the latch.

Possible DTC

DTCs on devices connected to the door harness; below are some DTCs for purely illustrative purposes but **NOT exhaustive:**

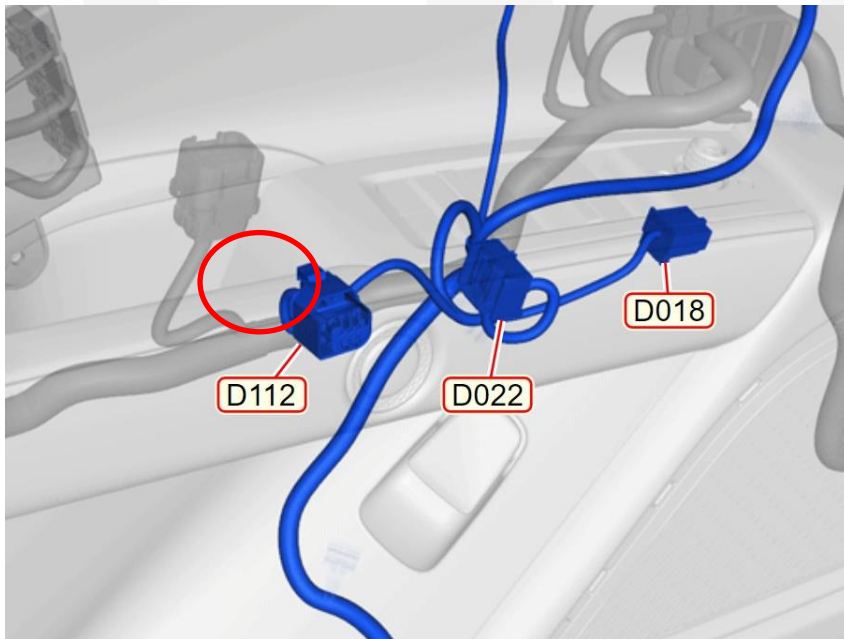
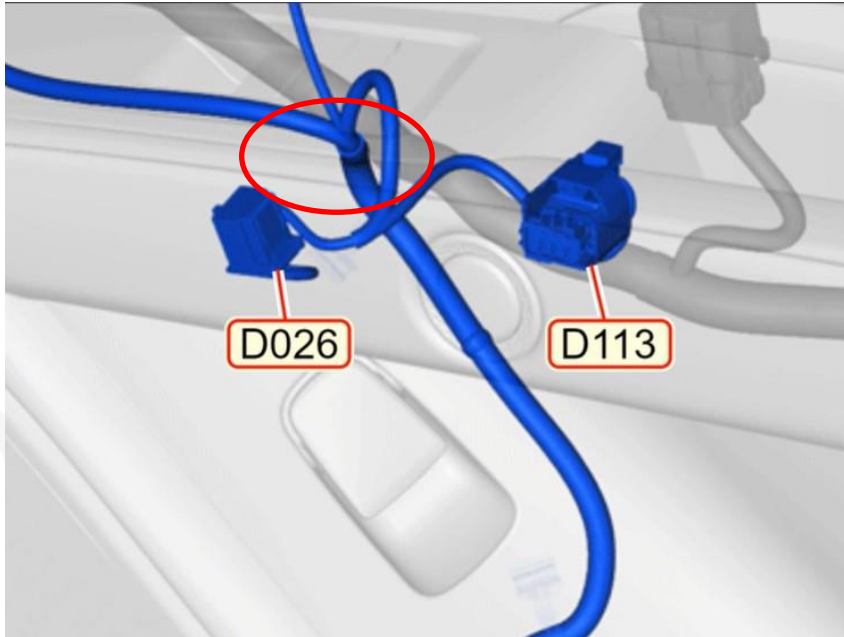
DTC Code	DTC naming
B250111	Door Internal Latch Release Switch-Circuit Short to Ground
B250113	Door Internal Latch Release Switch-Circuit Open
U12BD00	Lost Communication With Passenger Door Latch Module

Issue: The door panel wiring is pinched/damaged (during factory assembly) in the following areas:

- Left-hand side: between connectors D1 12 and wiring fork with connector D022
- Right-hand side: between connectors D1 13 and wiring fork with connector D026

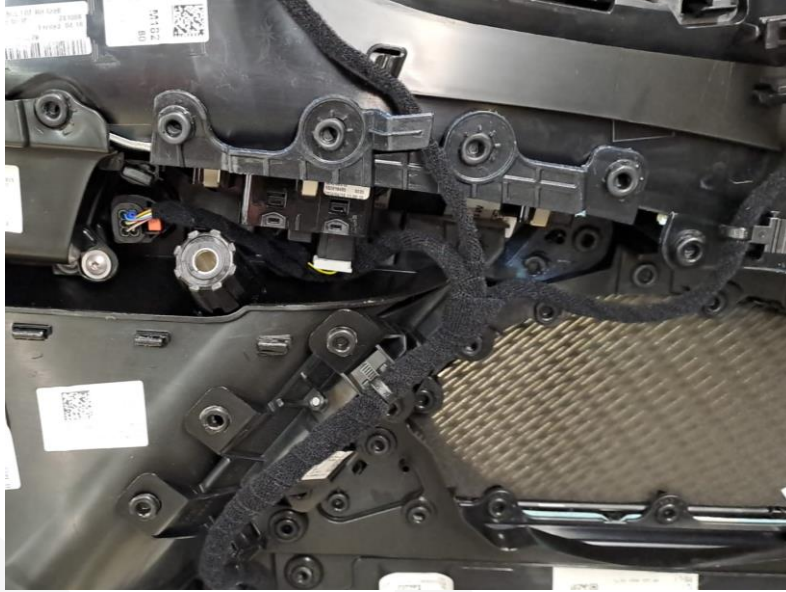
Refer to the pictures below:



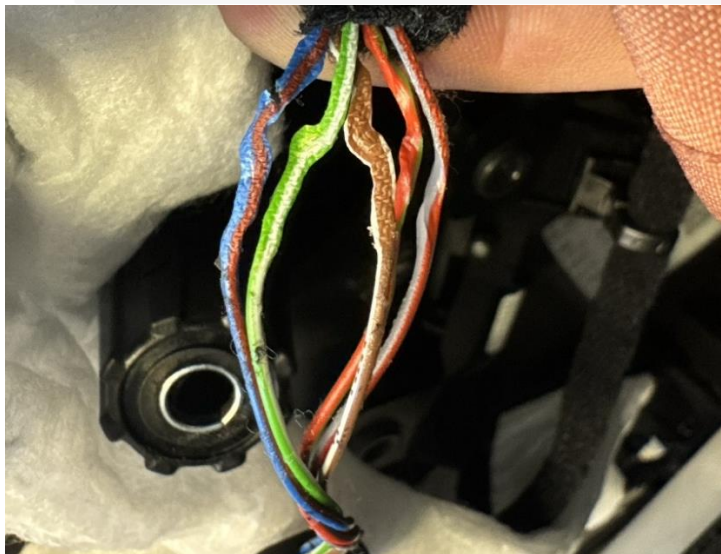


Repair procedure

1) Take a **CLEAR** picture of the door panel wiring, as shown below:

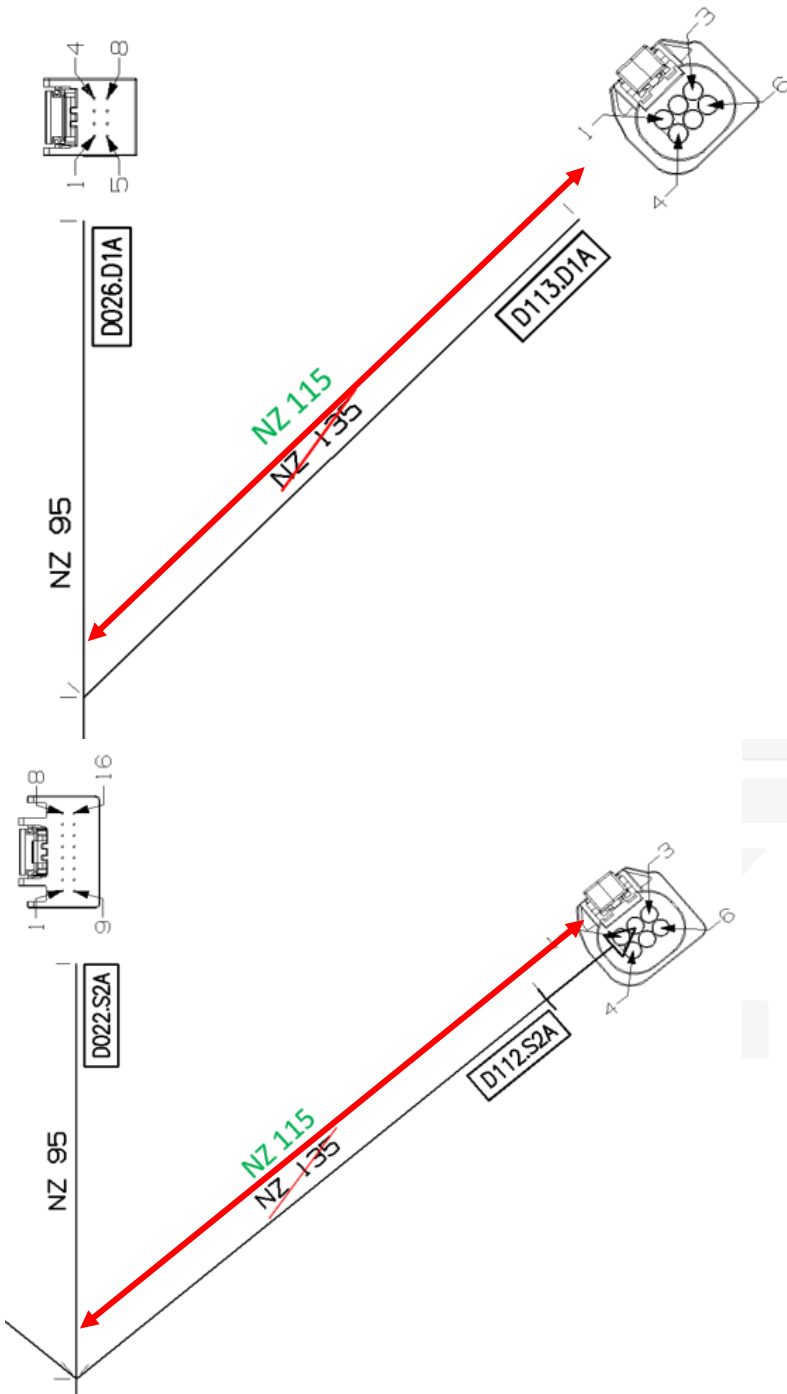
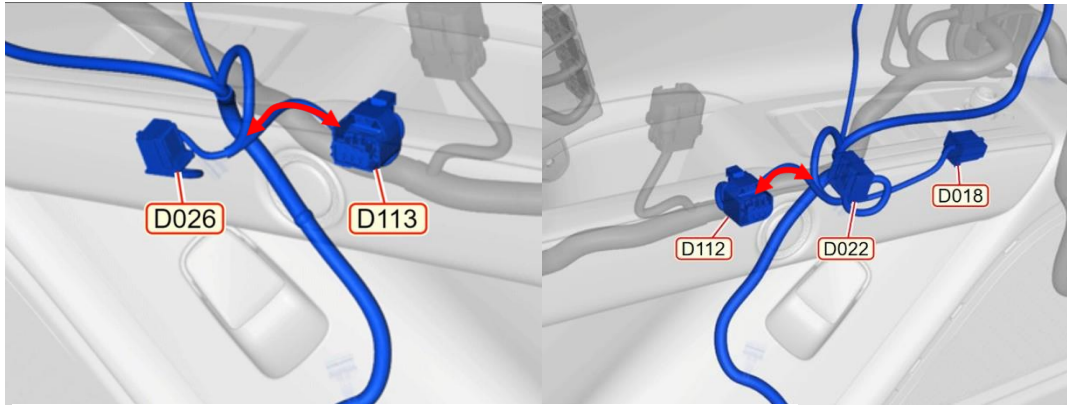


2) Take a **CLEAR** picture of the wiring label and a picture of the damaged wirings, as shown below:



3) **Measure the length of wiring** in the following areas (refer to the pictures below):

- Left hand side: between connectors D112 and wiring fork with connector D022
- Right hand side: between connectors D113 and wiring fork with connector D026





- 4) If possible, repair the pinched/damaged wiring following the procedure 00.30.005 80 - CABLES AND CONNECTORS REPAIR.
- 5) Clear ALL DTCs and test the vehicle to confirm that the anomaly and related DTCs are no longer present.
- 6) If technical support is not needed, it is required to open a Blue On Line as "Factory Information" by providing:
 - picture of the wiring layout
 - picture of the label
 - result of the measurement
 - picture of the damaged wiring

as described in the step above.

Please do not hesitate to contact us with any questions you may have.

Kind regards,

TECHNICAL SERVICE OPERATIONS