

Issue Date: Feb. 13, 2025

Repair Instruction of Cooling Fan Motor
Bolt Retightening
< GSX800 >

Workflow

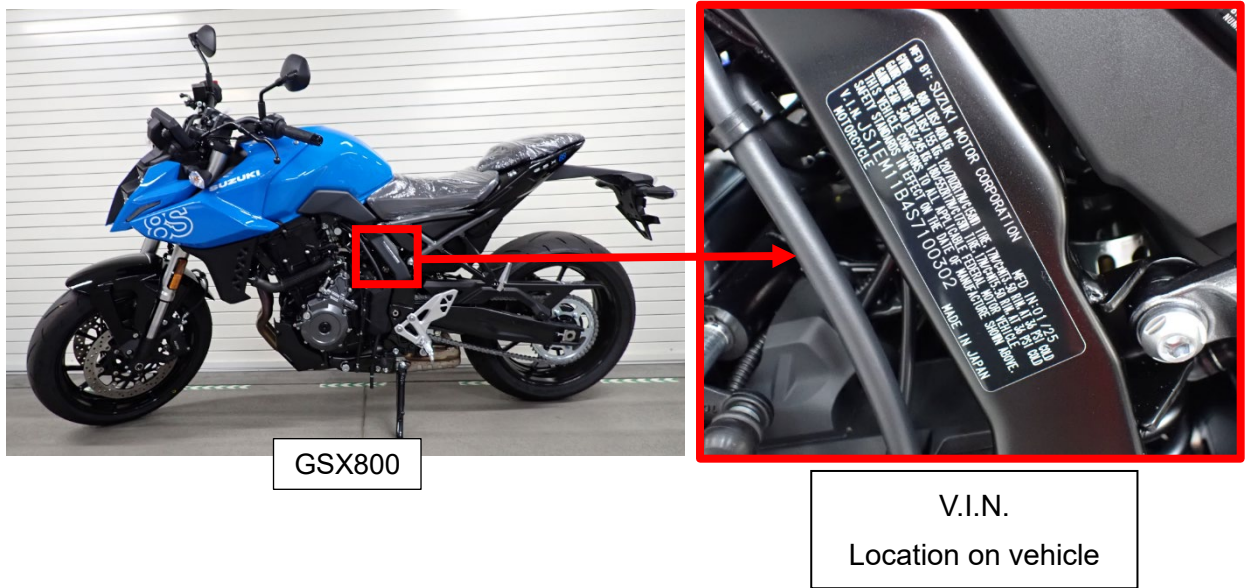
1. Confirmation of Affected Vehicles	Page 2
1-1. V.I.N. Location	Page 2



2. Countermeasure Operations	Page 3
2-1. Required Tools	Page 3
2-2. Replacement Parts	Page 3
2-3. Countermeasure	Page 4
2-4. Preparation	Page 5
2-5. Unpacking	Page 5
2-6. Cowling removal	Page 8
2-7. Removal of Cooling Fan Assembly	Page 10
2-8. Retightening of Cooling Fan Motor bolt	Page 12
2-9. Installation of Cooling Fan Assembly	Page 12
2-10. Installation of Cowling	Page 14
2-11. Final inspection after the work	Page 15
2-12. Repacking	Page 15

1. Confirmation of Affected Vehicles

1-1. V.I.N. Location



2. Countermeasure Operations

2-1. Required Tools

Tool Name	Size, Special Tool Number
Electric impact wrench	-
T-type wrench	-
Ratchet Handle	-
Box wrench	10mm、12mm
Torque wrench	5.0N·m~12N·m
Joint (Extension bar)	L=75mm, L=150mm
Hexagon socket wrench	4mm、5mm
Phillips screwdriver	No.2
Box wrench (Long type 55mm)	10mm
Flat type Spatulas (Remover)	(To remove fastener)
Waste cloth	-

Special Tools (Shipped from SMC)

No.	Part Number	Item Name	pieces / units
1	-	Socket for Radiator Fan Motor Bolt tightening	1
2	-	Rubber sheet	1

No.1



No.2

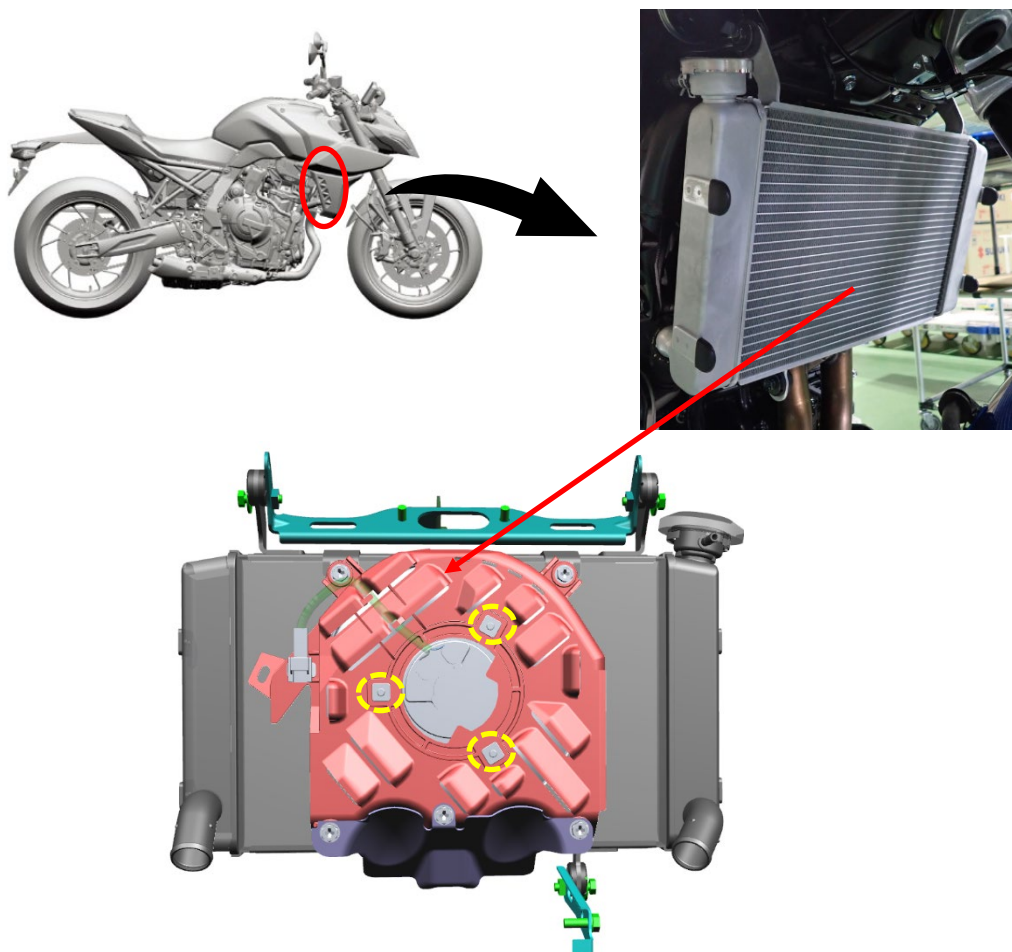


2-2. Replacement parts

No replacement parts for this repair

2-3. Countermeasure

Retightening Cooling Fan Motor Bolt.



Precautions

- When two people work together, confirm what to do next verbally each other for safety.
- Disassembled parts should be carefully stored so that they are not damaged until they are assembled and organized so that they are not missing.
- Absolutely no fire allowed during the work.
- When handling flammable materials such as solvents and gasoline, be sure to ventilate and be careful of fire.

Refer to the service manual and set-up manual for the details not mentioned in the instructions.

2-4. Preparation

⚠ CAUTION
Assembling the vehicle in poor working condition can be hazardous.
Place the packed vehicle on a level floor where it is clean and spacious.

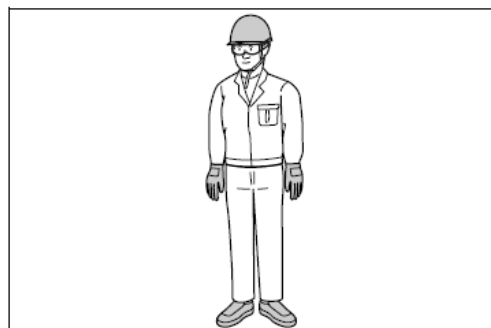
(A): Packed vehicle

(B): Working space



SELF PROTECTION

⚠ CAUTION
Assembling the vehicle without proper clothes and protective gear can be hazardous. You can be injured if you do not wear proper clothes and protective gear.
Be sure to wear proper clothes and shoes for assembling and wear protective glasses, mask or gloves as necessary.



2-5. Unpackaging

- 1) Remove a band(A).

NOTE: Reuse the band.



2) Remove the cardboard.



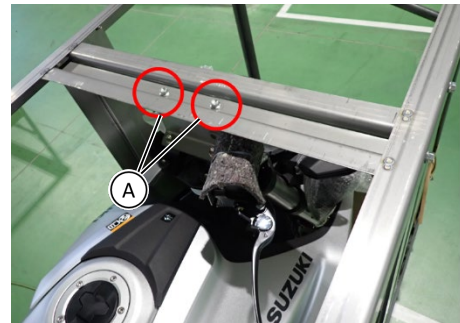
NOTE:
Reuse the cardboard.

CAUTION
Metal crates may have sharp edges and may cause injury.

Wear proper protective clothes and gear.

3) Remove the bolts (A) of the bracket and bracket

4) Remove the bolts of the top frame of packing frame and remove the top frame.



NOTE:
• Protect the vehicle to prevent from damages during unpacking work.

5) Remove the bolts of the packing frame and remove the front struts and side struts.



NOTE:

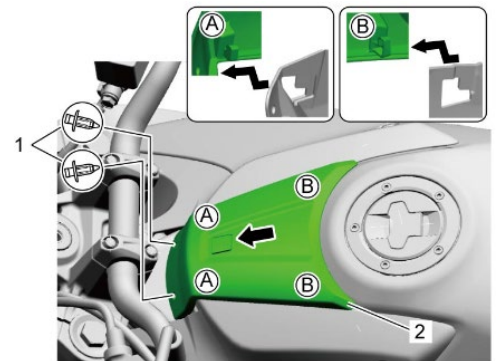
Put protective covers on edge of crate to prevent injury during repair work if necessary.

2-6. Cowling removal

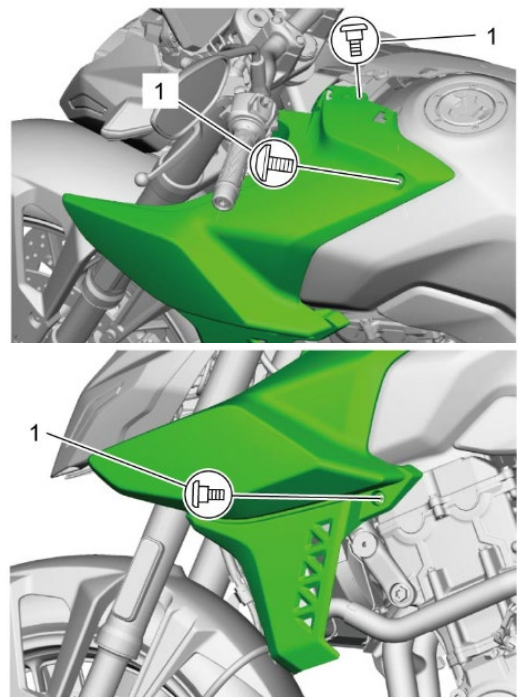
NOTE:

- **To carry out work simultaneously with two persons (one person for each of left and right sides).**

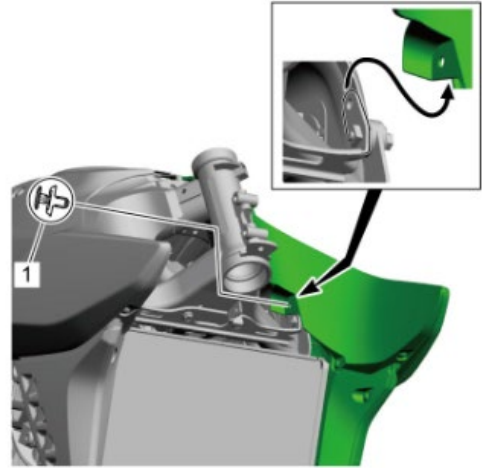
- 1) Remove the fasteners (1).
- 2) Remove the fuel tank cover (2) in the direction of arrow.



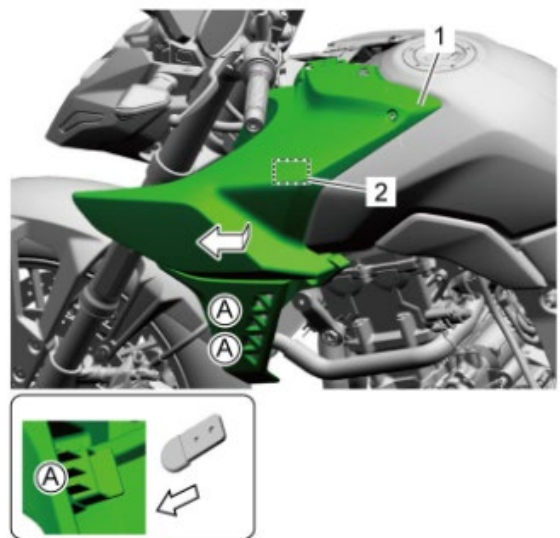
- 3) Remove the frame body cover assembly screws (1).



4) Remove the fastener (1).



5) Pull the frame body cover assembly (1) forward to remove the frame body cover assembly.



2. Hook-and-loop fastener

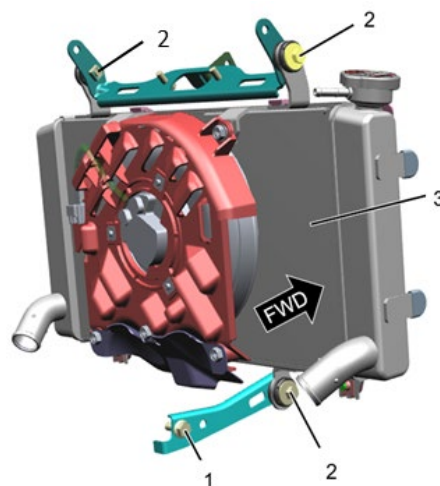
Perform the same operation as described in 3) to 5) and remove the cowling on the opposite side.

2-7. Removal of Cooling Fan Assembly

- 1) Disconnect the cooling fan motor coupler (1).



- 2) Remove the radiator mounting bolts (2) and radiator lower bracket bolt (1).
- 3) Tilt the radiator body forward of the vehicle to open a space on the cooling fan side.



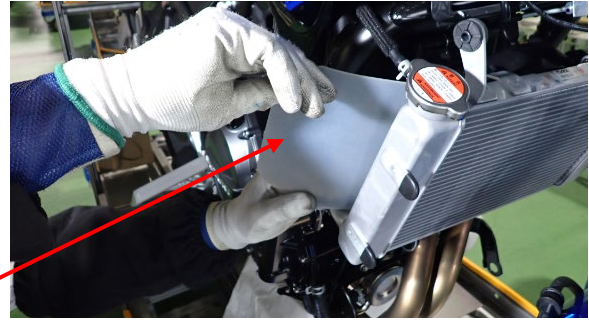
NOTE:

- When removing the bracket bolt, the person on the opposite side should support the radiator.

NOTE:

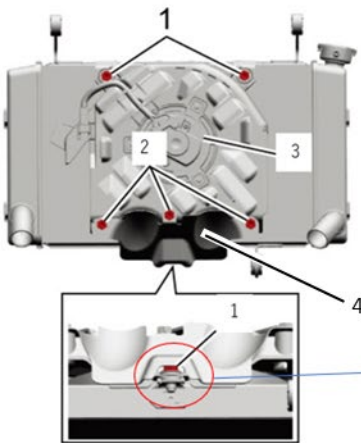
- The core of the radiator is easily deformed and damaged, so be careful when working.

- 4) Insert the rubber sheet between the radiator fan and the radiator to prevent scratches on the radiator fin as shown in the picture.



Rubber sheet

- 5) Remove the cooling fan shroud bolts (2) and cooling fan shroud (4) from the radiator fan.
6) Remove the cooling fan assembly bolts (1) and cooling fan assembly (3) from the left side of the vehicle.



NOTE:
• The radiator fins are easily deformed and scratched, so be careful when working.

NOTE:
• Loosen the cooling fan bolts while supporting the cooling fan assembly with your hands.

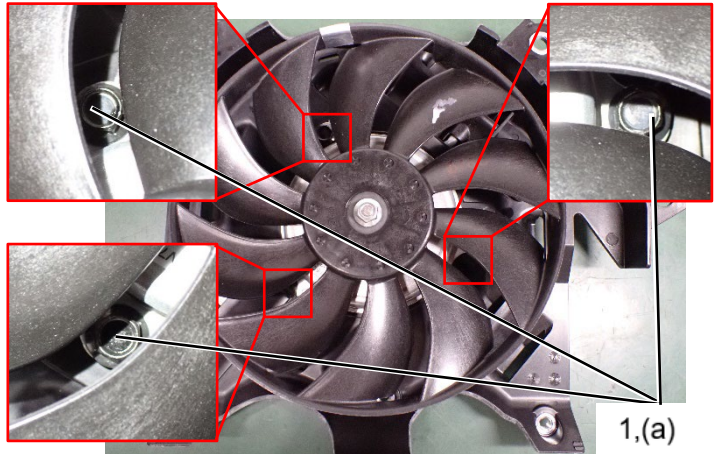


2-8. Retightening of Cooling Fan Motor bolt

- 1) Use the Socket for Radiator Fan Motor Bolt tightening to Retighten the Cooling Fan Motor bolts (1).

Tightening torque(a)

5.0 N·m (0.51 kgf-m, 3.70 lbf-ft)



2-9. Installation of Cooling Fan Assembly

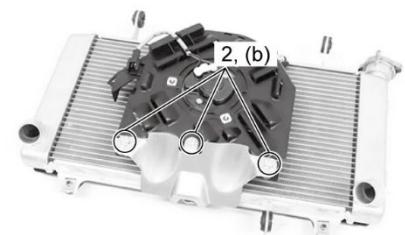
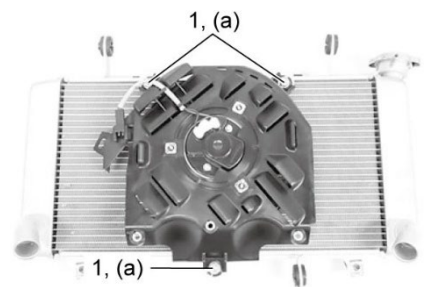
- 1) Install cooling fan assembly tighten the cooling fan assembly mounting bolts (1) and cooling fan shroud bolts (2) to the specified torque.

Tightening torque(a)

8.4 N·m (0.86 kgf-m, 6.20 lbf-ft)

Tightening torque(b)

8.4 N·m (0.86 kgf-m, 6.20 lbf-ft)



- 2) Remove the rubber sheet after installing the cooling fan.

Rubber sheet



- 3) Tighten the radiator mounting bolts (2) and a radiator lower bracket bolt (1) to the specified torque.

Tightening torque(a)

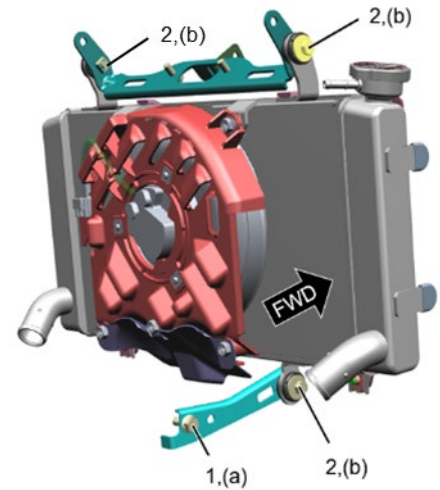
10 N·m (1.0 kgf-m, 7.5 lbf-ft)

Tightening torque(b)

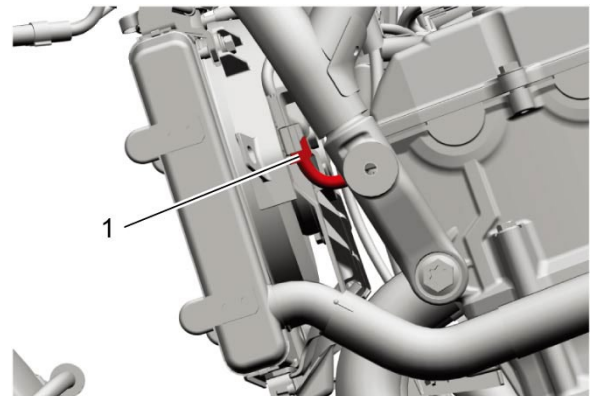
5.5 N·m (0.56 kgf-m, 4.05 lbf-ft)

NOTE:

- To have a person on the opposite side support a radiator when tightening a radiator lower bracket.

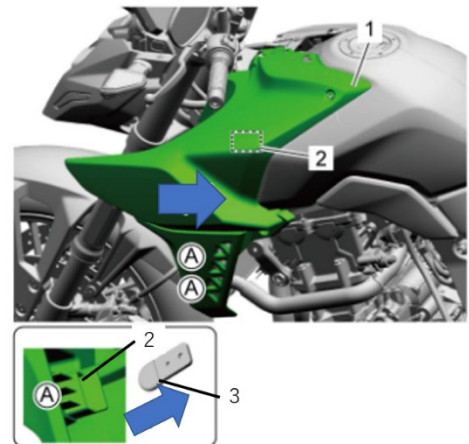


- 4) Connect the cooling fan motor coupler (1).
- 5) After connecting the cooling fan motor coupler (1), Check the connection by pulling the coupler lightly.

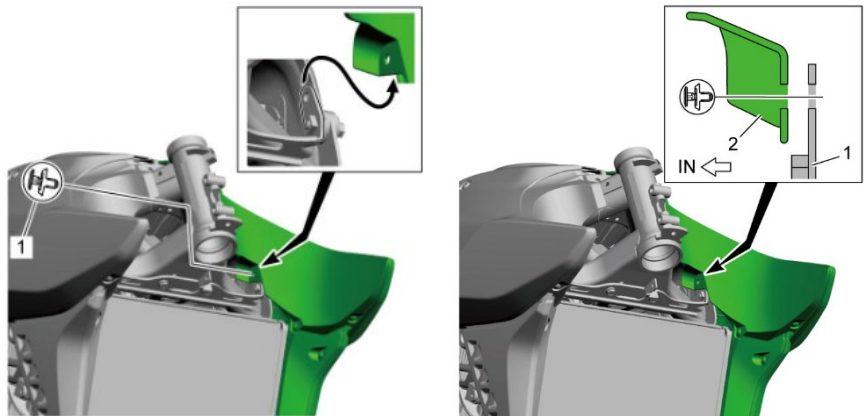


2-10. Installation of Cowling

- 1) When installing the frame body cover assembly (1), first insert the bracket of the radiator assembly (3) into the hook of the frame body cover assembly (2).



- 2) Install the fasteners (1).



NOTE:

- Position the bracket (1) of the radiator inside the frame body cover assembly (2).

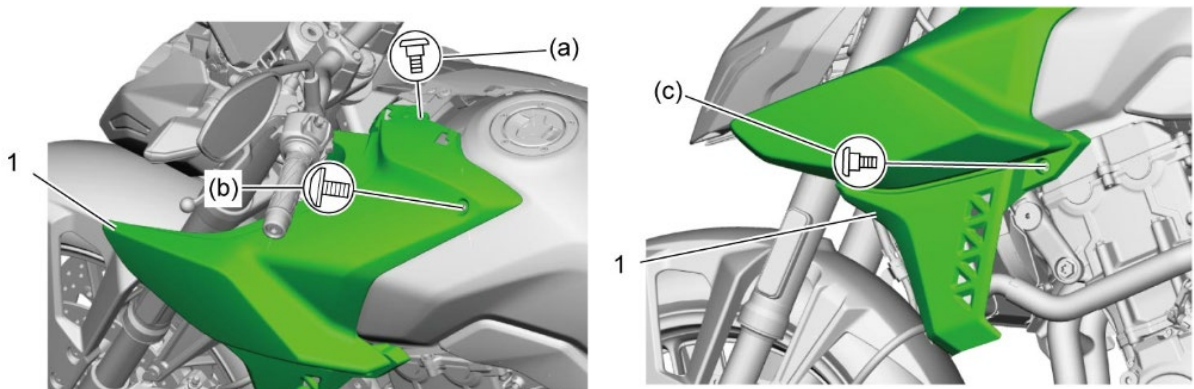
- 3) Tighten the frame body cover assembly (1) to the specified torque.

Tightening torque(a) (b)

12 N·m (1.2 kgf-m, 9.0 lbf-ft)

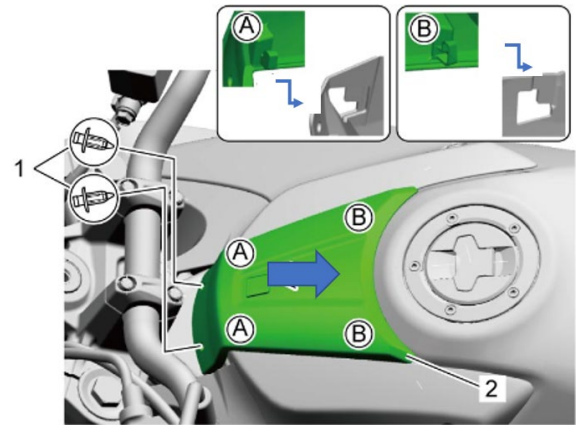
Tightening torque(c)

6.0 N·m (0.61 kgf-m, 4.45 lbf-ft)



Perform the same operation as described in 1) to 3) and install the cowling on the opposite side.

- 4) Install the fuel tank cover (2) in the direction of the arrow.
- 5) Install the fasteners (1).



2-11. Final inspection after the work

- (1) Check that each part is securely set and tightened.
- (2) Check each parts has no damage.
- (3) Check the radiator core has no deformation or damage.
- (4) Check the Cooling fan motor coupler installed securely.

2-12. Repacking

- 1) Repacking the vehicle with the inverse procedure of 2-5.

NOTE:

- **Confirm that V.I.N. of the cardboard is matched the vehicle's one.**
- **Restore all protective material after the work is done.**
- **Confirm that the box containing parts is stored in the crate.**

- 2) Check that cardboard box is set securely.

NOTE:

Align the vehicle with the illustration on the cardboard.

