

2025-02-20

 THIS REPAIR IS MOBILE FRIENDLY

MODEL

E-Series	Model Description	Production Date
G90	M5 Sedan	SoP (@ 7/24)
G99	M5 Touring	SoP (@ 11/24)

SITUATION

During highly dynamic driving, washer fluid may be forced out of the windshield washer nozzles. This can lead to the washer fluid reservoir being completely emptied.

CAUSE

Insufficient fluid retention within the washer fluid supply hose system.

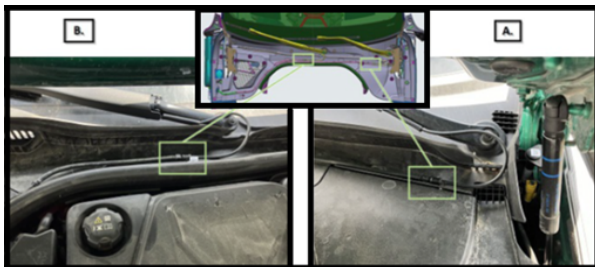
CORRECTION

The driver and passenger side washer fluid diaphragms must be replaced with non-return (one-way) valves.

PROCEDURE

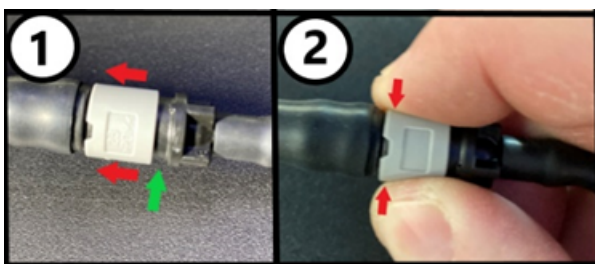
When a customer states the concern that is described in the situation, only then, proceed as follows:

Disassembly



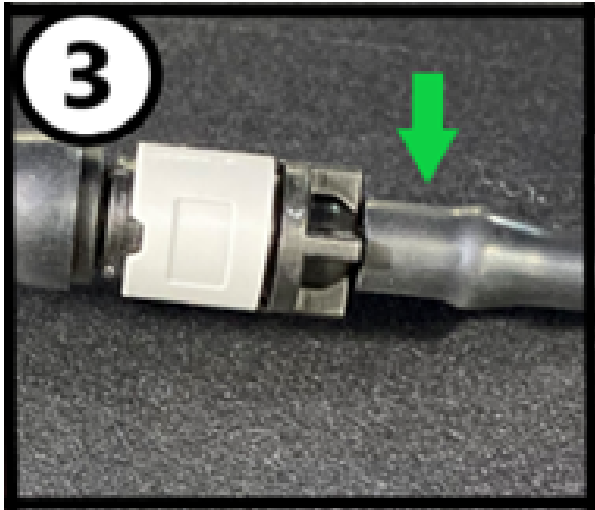
1. Disconnect the washer fluid hoses at their separation points on the driver's and passenger's side.

A. = Driver's side
B. = Passenger's side

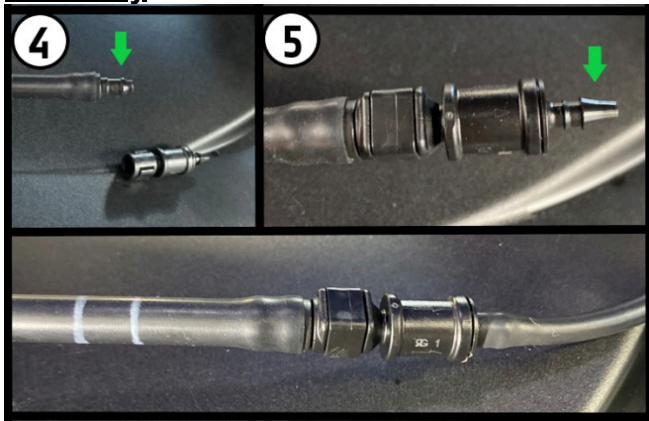


2. Unlock the hose coupling by sliding the (1) lock down in the direction of the red arrows. Gently squeeze the end of the grey lock (2) and lightly tug on the other end of the separation point to unfasten the coupling.

3. Remove the rubber washer hose from the barb (3) on the end of the separation point.



Assembly



4. At the washer hose separation point, install the new non-return valve onto the end (4) of the existing coupling. Listen for an audible click to ensure the valve is secured.

5. Install the washer hose removed in step three to the barb (5) of the new diaphragm.

6. Secure the washer hoses into the guides of the windshield panel clips.

7. Test the operation of the windshield washer system and inspect for any leaks.

PARTS INFORMATION

Use and invoice the part number below.

Note: This part is designated for G2x Series vehicles, but for this repair on G9x vehicles only the non-return valve portion is required. The included washer nozzle portion is not needed.

Part number “61 61 9478357” at a quantity of two (2) must be ordered to obtain the non-return (one-way) valves.

Part Number	Description	Quantity
61 61 9478357	Spray nozzle with hose, driver's side (“LL” stands for German phrase Links Lenker, meaning left-hand drive)	2

CLAIM INFORMATION

Covered under the terms of the BMW New Vehicle Limited Warranty for Passenger Cars and Light Trucks.

Repair Code:	6166024800	Windscreen washer system, lines/valves/connectors Leaking
---------------------	-------------------	--

Diaagnosis

Labor Operation	Description	Labor Allowance
61 00 009*	Confirming the washer issue is the one that is described in the Situation (Work time)	WT FRU
Or:		
00 58 500*	Diagnosis Worktime Flat Rate	2 FRU

And, together with the diagnosis that applies to your center, claim the work item below that applies.

Repair

Labor Operation	Description	Labor Allowance
61 99 000	Work time to replace the driver and passenger side washer fluid diaphragms with anon-return (one-way) (Main work)	4 FRU
Or:		
61 99 000	Work time to replace the driver and passenger side washer fluid diaphragms with anon-return (one-way) (Plusposition work)	3 FRU

If you are using a Main labor operation code for another repair, then claim the Plusposition type labor operation as described above for this repair.

Work time labor operation codes 61 00 009 and 00 58 500 are not considered Main labor operations.

(*) Based on which one applies to your center, please refer to **SI B01 01 20** or **B01 07 20** for the applicable procedure for documenting, claiming, and explaining, on the RO and in the claim comments, your diagnosis work time (WT), job/repair work time (WT), and the vehicle repairs your center performed, unless otherwise required by State law.

FEEDBACK REGARDING THIS BULLETIN

Technical Feedback	To submit feedback for the technical topic of this bulletin: Submit your feedback in the rating box at the top of this bulletin
Warranty Feedback	To submit feedback for the CLAIMS section of this bulletin: Submit an IDS ticket to the Warranty Department, or use the chat available in the Warranty Documentation Portal
Parts Feedback	To submit feedback for the PARTS section of this bulletin: Submit an IDS ticket to the Parts Department

