

Technical Instruction TI – NA026

Enviro200 Change of Brake Calliper Dust Caps

Introduction

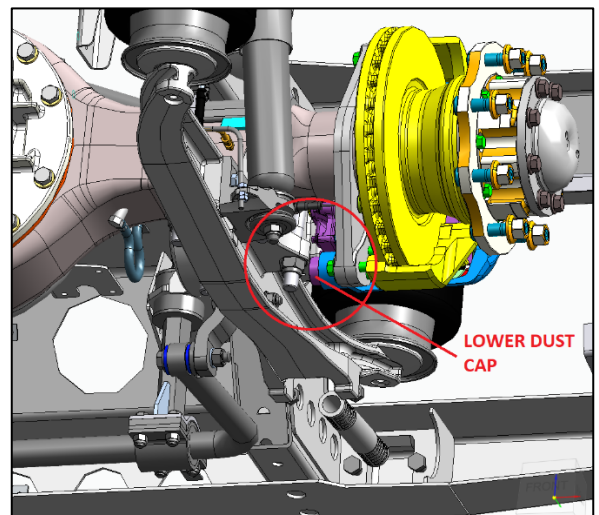
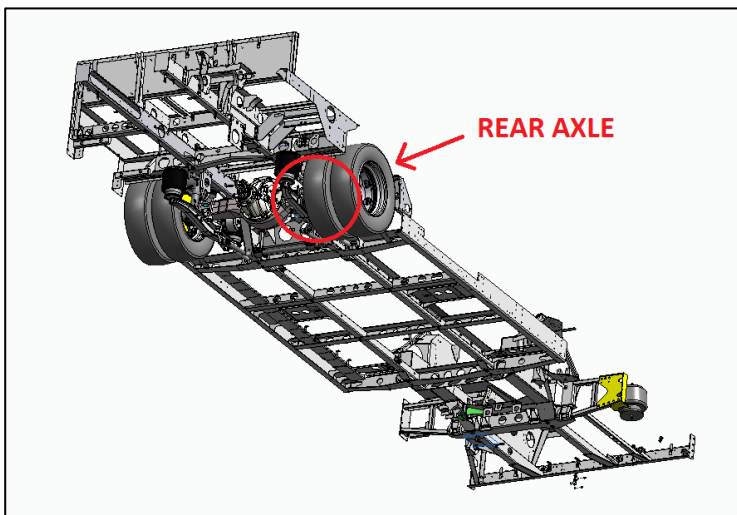
This Technical Instruction has been issued to advise customers to change the lower dust cap on the rear brake callipers on certain Enviro200 contracts. This is to be undertaken as part of the next scheduled service for affected vehicles (a list can be found in the “Scope” section at the end of this document).

Description of Problem

- A fouling condition has been discovered between the spring beam and the lower brake calliper dust cap for the slider pins, occurring when brake pad wear reaches approx. 50%.
- As the brake pad continues to wear beyond this level, the dust cap is deformed by the lug on the spring beam, with the paint finish on the spring beam also affected to a minor degree.
- There are 2 sizes of dust caps available for the callipers, with the larger (5/8”) cap fitted by default. However, on the lower slider pin, the shorter (1/8”) cap can be fitted as there is no protrusion in this area (i.e., the cavity offered by the larger cap is not required).
- This does not have a noticeable impact on the functionality of the brake callipers and was discovered through visual inspection only. The damage to the spring beams is negligible and of no concern.

Problem Location

Please refer to the below images showing the affected location on the vehicle:



IMPORTANT: This issue affects both the off-side and near-side brake callipers.

NOTE: In accordance with the service manual for these vehicles, please ensure that brake pads are changed as soon as indicated by the warning light on the dash. If the brake pads are nearing full wear, you may wish to take the opportunity to replace them during this procedure.

Technical Instruction TI – NA026

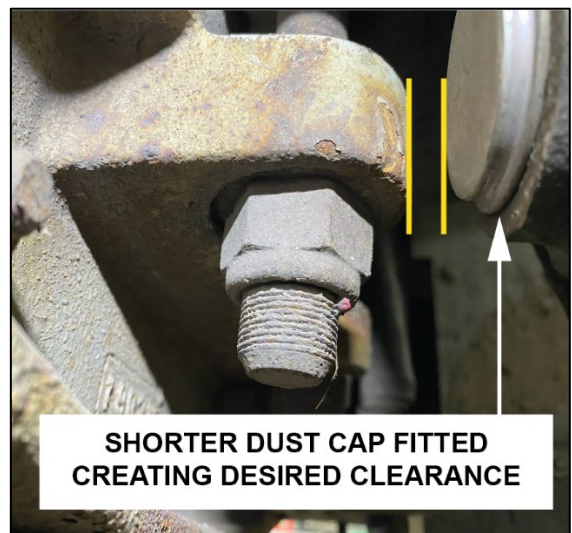
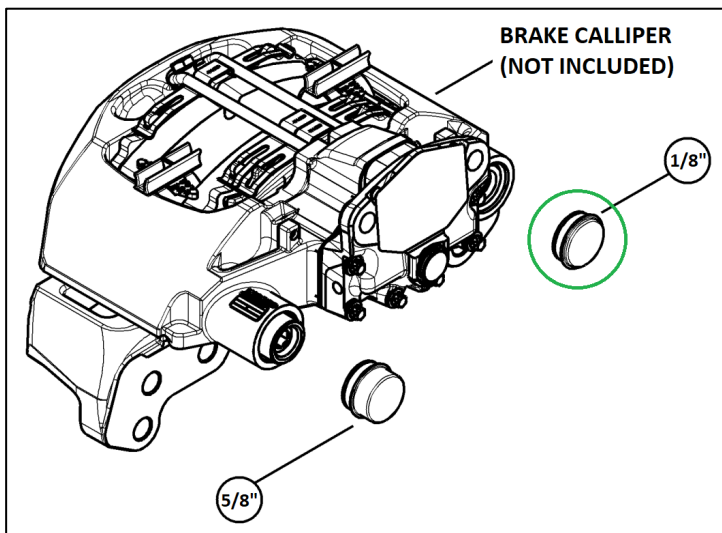
Enviro200 Change of Brake Calliper Dust Caps

Kit Details:

Item number	Description	QTY Required
659742-9	Cover Kit - Calliper	2

Retrofit Instructions:

Replace the 5/8" dust cap on the lower calliper slider pin with the 1/8" one supplied in the repair kit, and discard the cap taken off the calliper. Retain the larger cap from the kit for potential future use.



Before/After Comparison:

