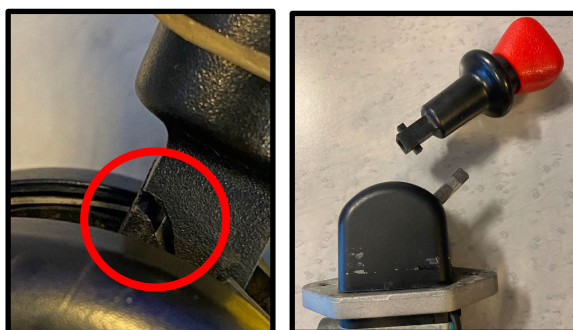


Operation Guide Heading: Controls and Instrumentation		Bulletin No:
Models Affected: ALL models that are fitted with Manual Park Brake Handle.	Title: Park Brake Valve Handle Return	962
Date: May 2023		
Page: 1 of 1		

Introduction:

This Service Bulletin has been released to remind Operators of the correct operation of the park brake lever following a recent increase in reported failures of these valves.

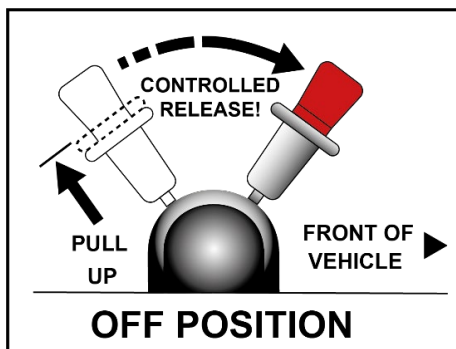


The outcome of our investigation has led to the conclusion that misuse of the lever is the cause of the failures, rather than a fault with the valve.

The apparent misuse is caused when drivers are allowing the lever of the parking brake to fly back under the full force of the return spring against the stop. This leads to fatigue in the material of the park brake valve handle and its premature failure.

Instructions for Correct Use:

To release the parking brake, the sleeve on the lever must first be lifted, then the lever **guided fully forward in a controlled manner**.



CAUTION: Do not release the lever so that it will be released under the full force of the return spring. This repeated action may cause damage to the park brake valve.