

Service Bulletin

Service Manual Heading	Rear Suspension	
Models Affected:	Title:	No:
E500 Classic, E500MMC, E500 Super Lo, Enviro 400	Anti Roll Bar Pin & Mounting Rubbers	928
Date: March 2019		
Page: 1 of 5		

Introduction

The purpose of this Service Bulletin is to inform Customers of the availability of Service List SL3308 which has been released and can be used on Enviro 500 and Enviro 400 should the lower linkage pin is missing or found to be loose, or if you are changing the ARB bushes.

The SL kit contains new Anti Roll Bar (ARB) Pin and Mounting Rubbers, fixing nuts and washers. For Enviro 400 this service kit supersedes previously issued SL3128.

Parts Supplied: Service List SL3308

Item	Part number	Description	QTY_per vehicle
1	477424	PIN, ANTI ROLL BAR	2
2	423615	WASHER ARB	2
3	MCN-515P	NUT FULL S/L M16	4
4	666385	BUSH, ANTI ROLL BAR	4
5	WMA-16SP	WASHER PLAIN M16	2

Installation Instructions Enviro 500 : Also refer the fig 1 & 2 on following pages

1. All the replacement parts are available in the Service Kit SL3308.
2. Remove and replace shaft ARB lower 477321 with pin anti-roll bar 477424 (Item 1) on both sides.
3. Remove and replace Mounting Rubber ARB 665403 with Bush, Anti Roll Bar 666385 (Item 4).
4. Fit washers 423615 (Item 2) and WMA-16SP (Item 5) in positions shown and M16 Nuts MCN-516P (Item 3).
5. Ensure that the suspension set at the correct ride height before tightening the Anti-roll bar linkage and fixing clamps to avoid 'winding up' the bushes. Tightening Torque = 249-275 Nm (184-203 lbsft).

Service Manual Heading	Rear Suspension	No: 928
Models Affected:	Title:	
E500 Classic, E500MMC, E500 Super Lo, Enviro 400	Anti Roll Bar Pin & Mounting Rubbers	
Date: March 2019		
Page: 2 of 5		

Fig 1 - Before Installation of SL3308 (LH Side Shown)

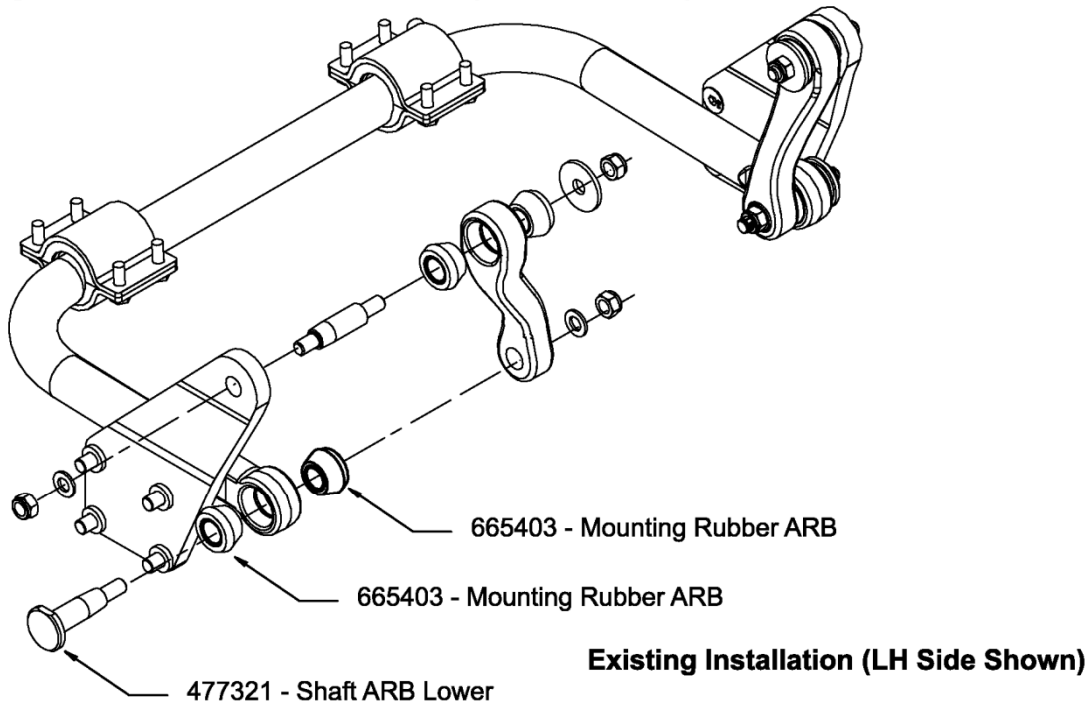
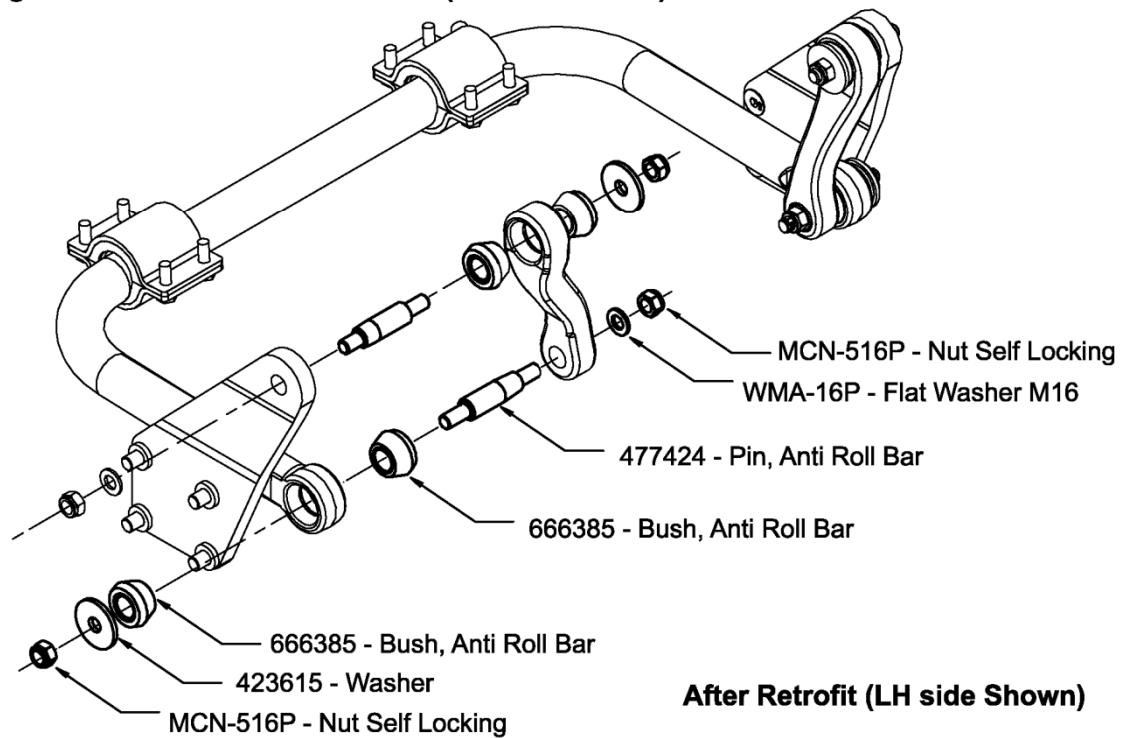


Fig 2 - After Installation of SL3308 (LH Side Shown)



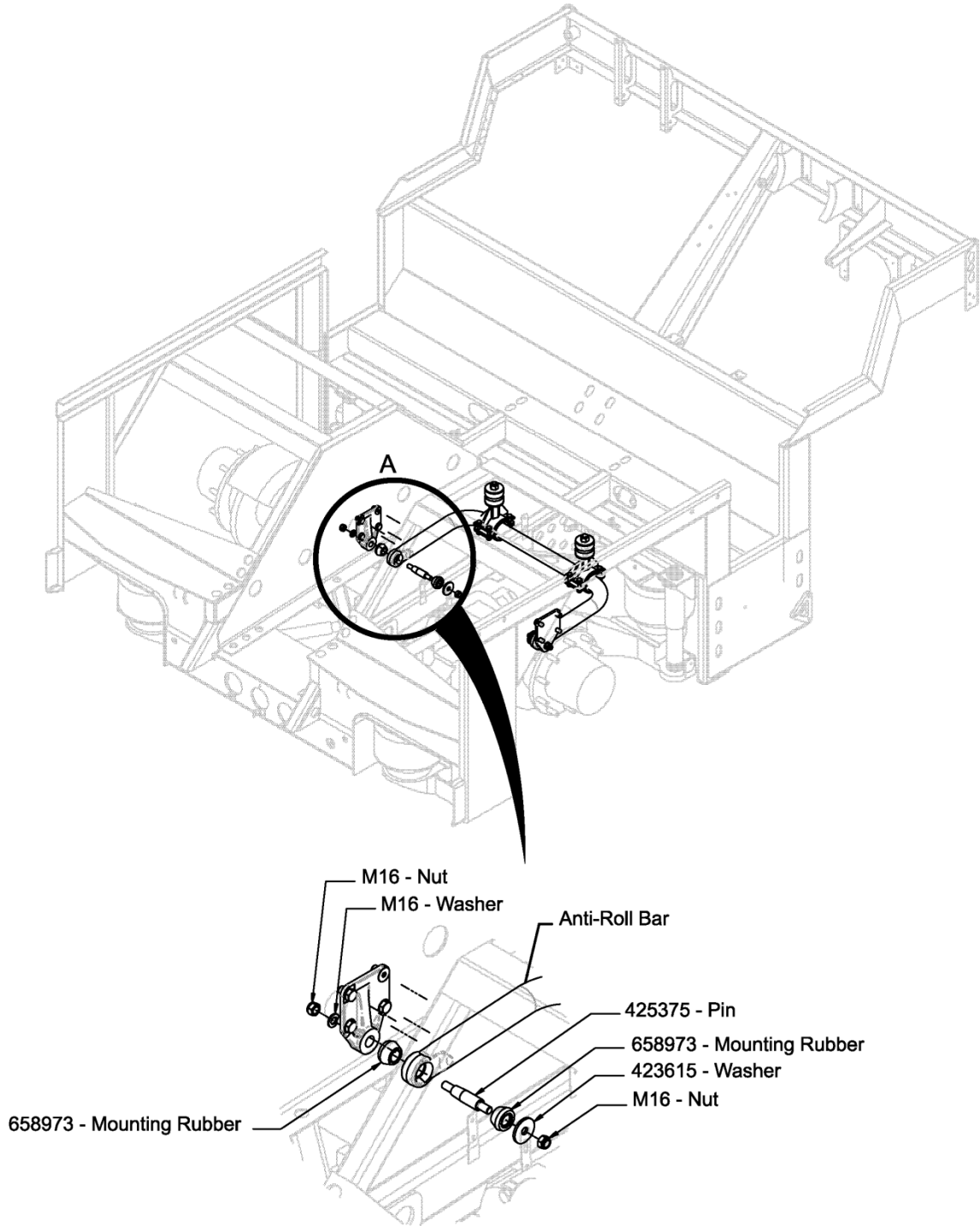
Service Manual Heading	Rear Suspension	
Models Affected:	Title:	No:
E500 Classic, E500MMC, E500 Super Lo, Enviro 400	Anti Roll Bar Pin & Mounting Rubbers	928
Date: March 2019		
Page: 3 of 5		

Installation Instructions Enviro 400 : Also refer the fig 3 & 4 on following pages

1. Starting on one side of the ARB, remove the M16 nuts at both ends of the ARB pin (starting with the inner nut). Remove M16 washer and washer (423615). Repeat the operation on other side.
2. Remove the ARB pins (425375) from both ends and discard them. Allow the ARB to swing down under control. Remove the existing ARB mounting rubbers (658973) from the ARB eyes and discard them. Refer to Fig 3 View A.
3. Assemble the new ARB mounting rubbers supplied in the SL Kit (666385) into both ends of the ARB eyes.
4. Align the ARB with the mounting plate and insert the new pins supplied in the SL kit (477424) into each end (passing through the new mounting rubbers). Refer to Fig 4 View B. Assemble the M16 washer and nut and tighten the pins to the housing plate. Torque to 230 – 260Nm. This must be done before stage 5.
5. Ensure that the vehicle is at normal ride height, then assemble the 423615 washer onto one of the ARB pins, refit the M16 nut and torque tighten to 230 – 260Nm. Repeat operation on the other side of the ARB.

Service Manual Heading	Rear Suspension	No: 928
Models Affected:	Title:	
E500 Classic, E500MMC, E500 Super Lo, Enviro 400	Anti Roll Bar Pin & Mounting Rubbers	
Date: March 2019		
Page: 4 of 5		

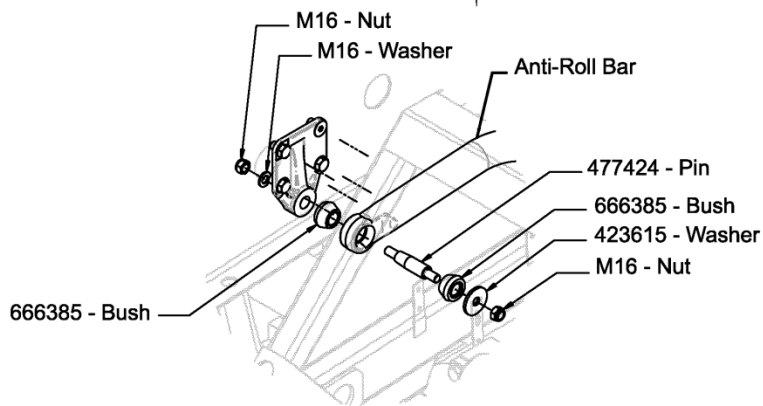
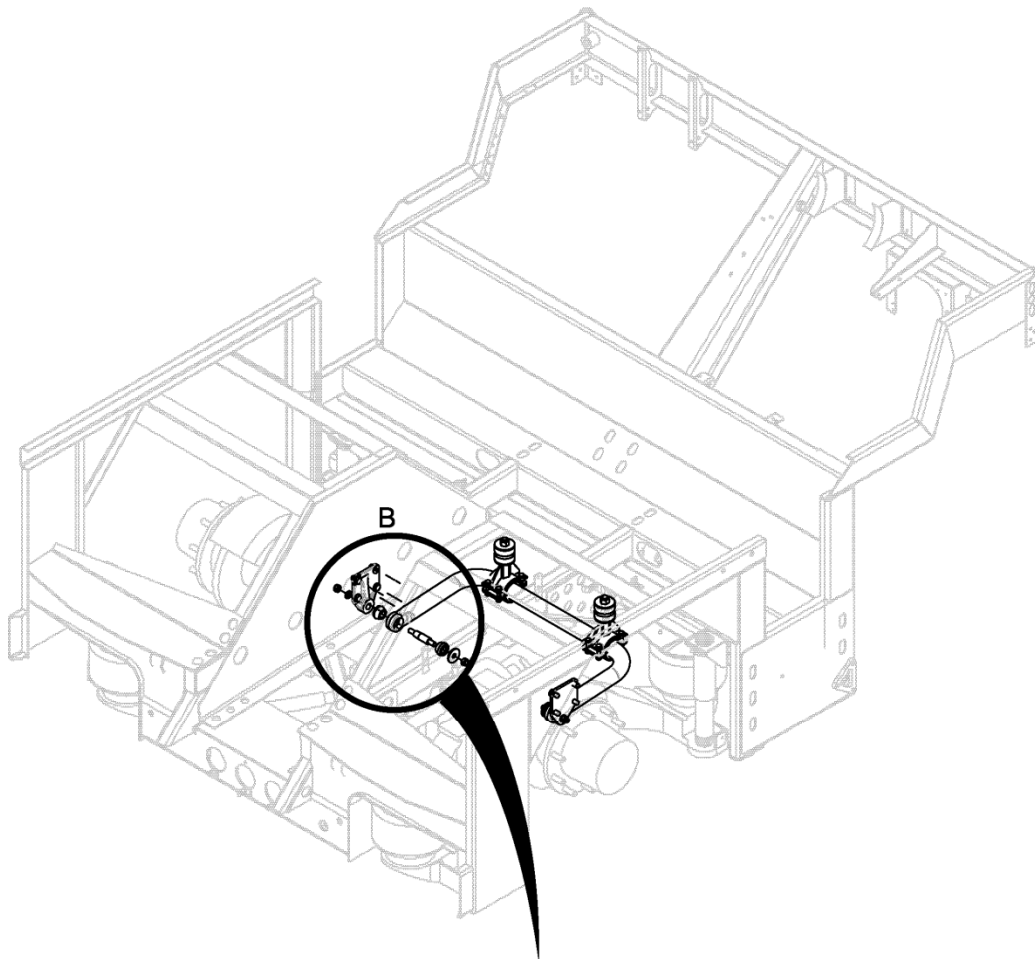
Fig 3 – Enviro 400 Existing Arrangement



View A - Existing Installation (RH Side Shown)

Service Manual Heading	Rear Suspension	No: 928
Models Affected:	Title:	
E500 Classic, E500MMC, E500 Super Lo, Enviro 400	Anti Roll Bar Pin & Mounting Rubbers	
Date: March 2019		
Page: 5 of 5		

Fig 4 – After Fitting SL3308



View B - After Retrofit (RH Side Shown)