



TECHNICAL SERVICE BULLETIN

Classification: BT25-002	Reference: NTB25-011	Date: February 18, 2025
-----------------------------	-------------------------	----------------------------

LICENSE PLATE FRAME INTERFERENCE TO REAR BUMPER

APPLIED VEHICLES: 2025 Murano (Z53)
APPLIED DATES: Built on or before January 13, 2025

IF YOU CONFIRM

A license plate frame does not sit flush and is making contact at bottom edge when installed to the Rear Bumper, as shown in Figure 1 and Figure 2.



Figure 1



Figure 2

ACTION

Refer to the **SERVICE PROCEDURE** in this bulletin to relocate the license plate mounting holes in the Rear Bumper.

IMPORTANT: The purpose of **ACTION** (above) is to give you a quick idea of the work you will be performing. You **MUST** closely follow the entire **SERVICE PROCEDURE** as it contains information that is essential to successfully completing this repair.

Bulletins are intended for use by qualified technicians, not 'do-it-yourselfers'. Qualified technicians are properly trained individuals who have the equipment, tools, safety instruction, and know-how to do a job properly and safely. **NOTE:** If you believe that a described condition may apply to a particular vehicle, **DO NOT** assume that it does. See your Nissan dealer to determine if this applies to your vehicle.

SERVICE PROCEDURE

1. Remove the two (2) J-clips, as shown in Figure 3.

IMPORTANT: Both J-clips will be reused so do not discard.

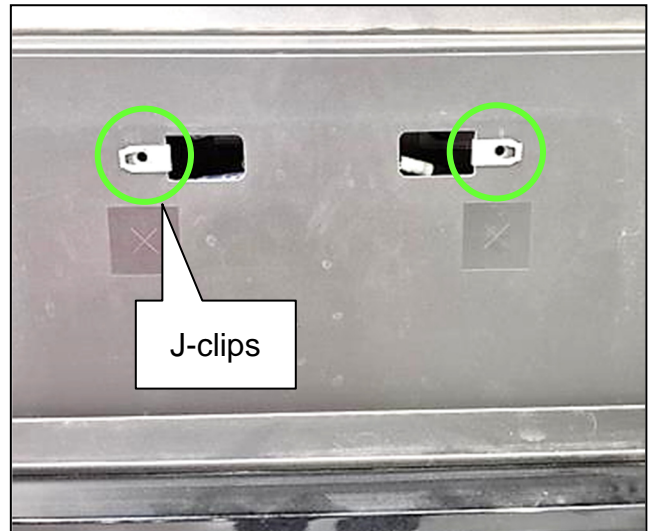


Figure 3

The following steps and figures show the passenger (RH) side of the license plate mounting points, the driver (LH) side is similar. Perform the following steps on both the LH and RH side license plate mounting points on the Rear Bumper.

2. Measure 12 mm from the outboard edge of the square cut-out, and then make a vertical scribe mark above the existing hole, as shown in Figure 4 and Figure 5.

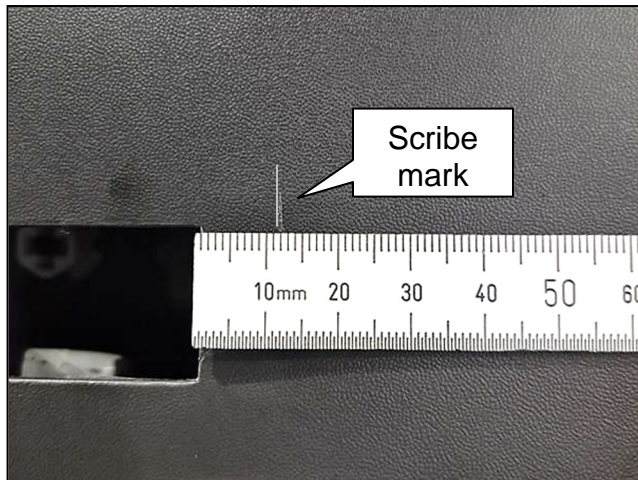


Figure 4

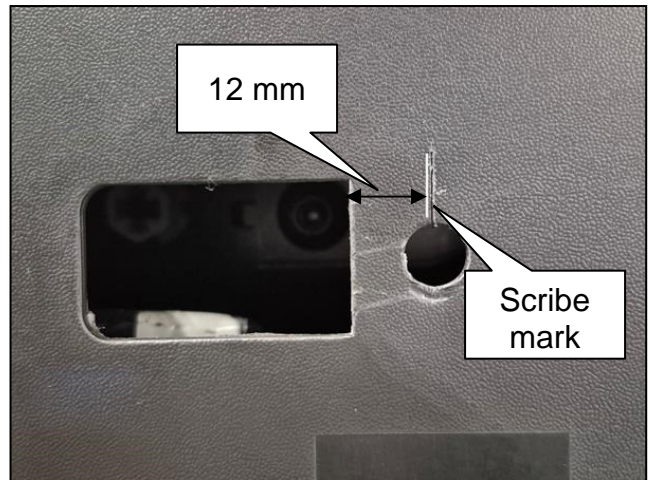


Figure 5

3. Measure 41 mm down from the top edge of Rear Bumper character line, and then make a horizontal scribe mark above the existing hole, as shown in Figure 6 and Figure 7.

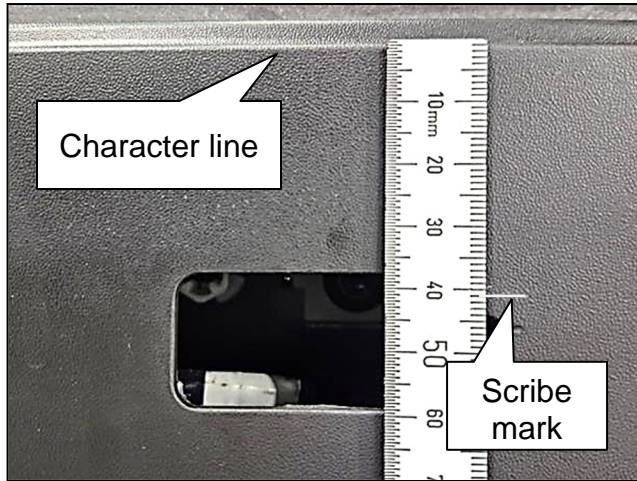


Figure 6

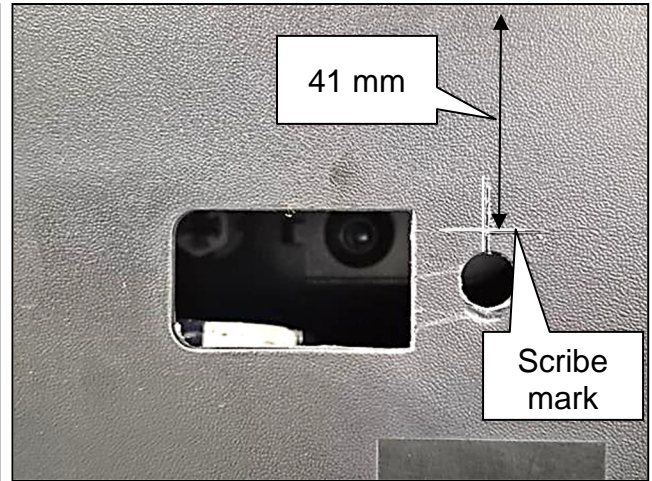


Figure 7

4. Using a tool with a sharp point, mark the center of the new hole to be drilled, as shown in Figure 8.

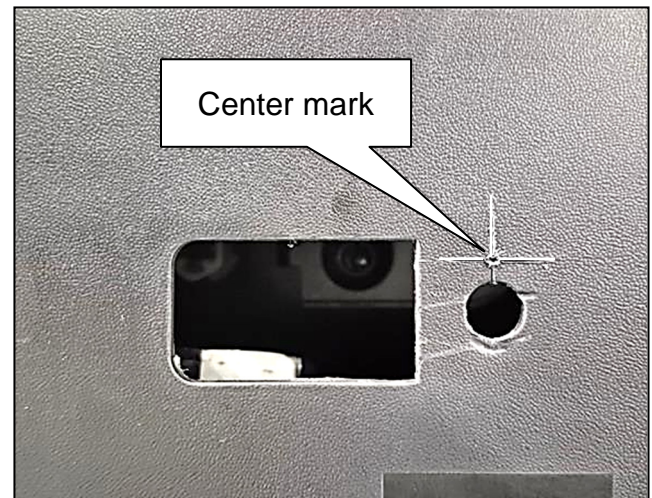


Figure 8

5. Using 5/16" drill bit, drill the new mounting hole, as shown in Figure 9.

NOTICE

Drill just enough to penetrate the material without causing damage to hidden harness.



Figure 9

6. Measure 5 mm up from the top outboard corner of the square cut-out and then make a horizontal scribe mark, as shown in Figure 10 and Figure 11.

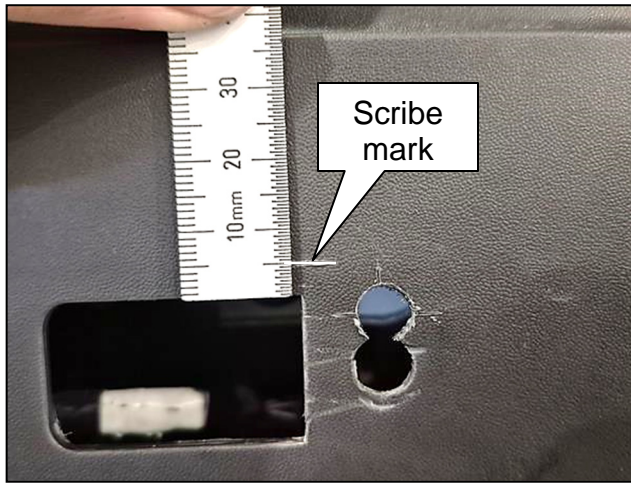


Figure 10

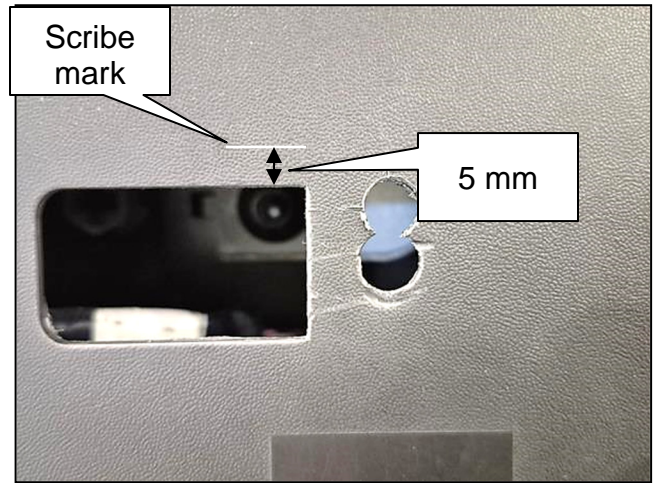


Figure 11

7. As shown in Figure 12, use a file or similar tool to make a vertical relief cut in the top outboard corner of the square cut-out up to the scribe mark (made in step 6).

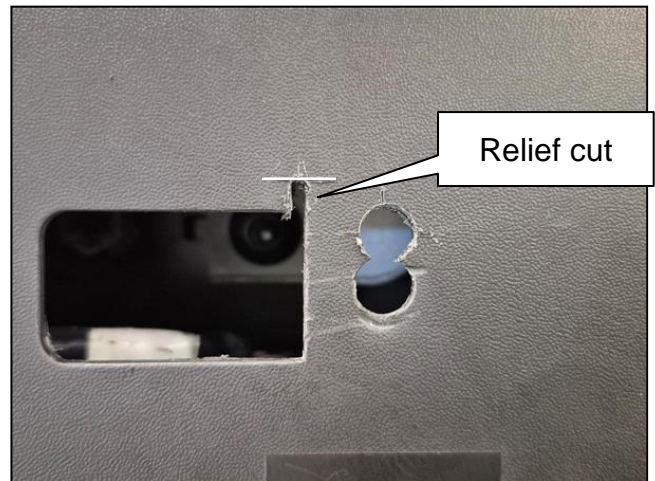


Figure 12

8. Install the two (2) J-clips in the new locations, as shown in Figure 13.

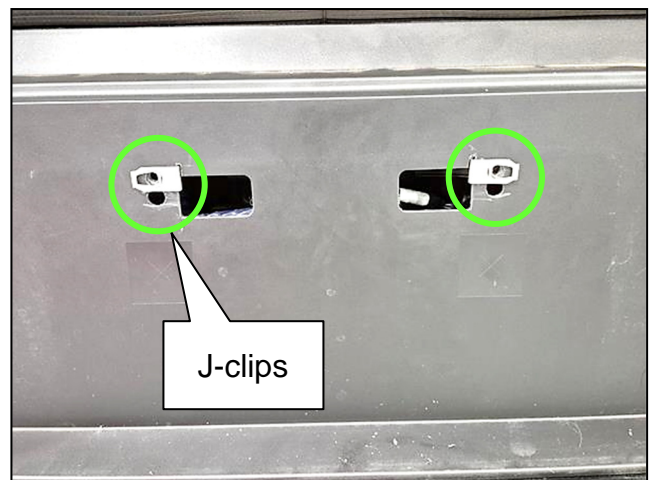


Figure 13

9. Install the license plate and frame assembly, as shown in Figure 14.



Figure 14

CLAIMS INFORMATION

Submit a Primary Operation (PO) type line claim using the following claims coding:

DESCRIPTION	OP CODE	SYM	DIA	FRT
Reposition Rear License Plate Frame	BX8UAA	ZE	32	0.2

AMENDMENT HISTORY

PUBLISHED DATE	REFERENCE	DESCRIPTION
February 18, 2025	NTB25-011	Original bulletin published

