



TECHNICAL SERVICE BULLETIN

Classification:

DA19-005G

Reference:

NTB19-033G

Date:

February 20, 2025

INTELLIGENT CRUISE CONTROL INOPERATIVE AND AEB/FEB WARNING LIGHT ON OR RADAR OBSTRUCTION MESSAGE DISPLAYED WITH DTC C1A16 OR C2582

This bulletin has been amended. See **AMENDMENT HISTORY** on the last page.
Please discard previous versions of this bulletin.

**APPLIED
VEHICLES:**

- 2016-2024 Altima (L33, L34)
- 2023-2024 ARIYA (FE0)
- 2017-2024 Armada (Y62)
- 2022-2024 Frontier (D41)
- 2018-2024 Kicks (P15)
- 2018-2024 LEAF (ZE1)
- 2016-2023 Maxima (A36)
- 2015-2024 Murano (Z52)
- 2016-2017 Murano Hybrid (Z52H)

- 2017-2024 Pathfinder (R52, R53)
- 2015-2023 Rogue (T32, T33)
- 2016-2018 Rogue Hybrid (T32H)
- 2017-2022 Rogue Sport (J11)
- 2016-2024 Sentra (B17, B18)
- 2020-2024 Titan/Titan XD (A61)
- 2020-2024 Versa (N18)
- 2023-2024 Z (Z34)

IF YOU CONFIRM

The customer states that the ICC stopped working while driving,

OR

The customer states that the AEB/FEB warning light is ON, or turned ON, while driving (Figure 1),

OR

The message “Unavailable Front Radar Obstruction” or “Forward Driving Aids Temporarily Disabled Front Sensor Blocked See Owner’s Manual” has displayed while driving (Figure 2).

AND

DTC C1A16, C1A16-97, C2582, or C2582-97 is the **ONLY** DTC stored.

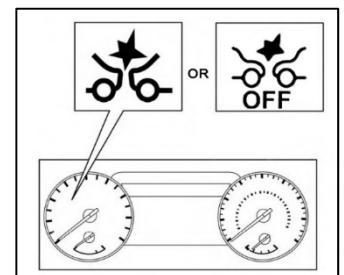


Figure 1

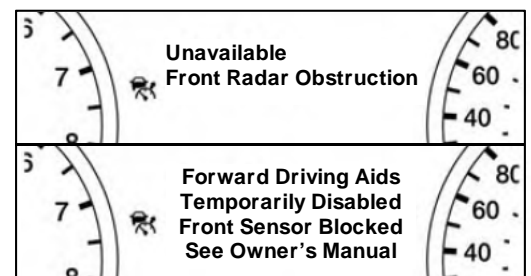


Figure 2

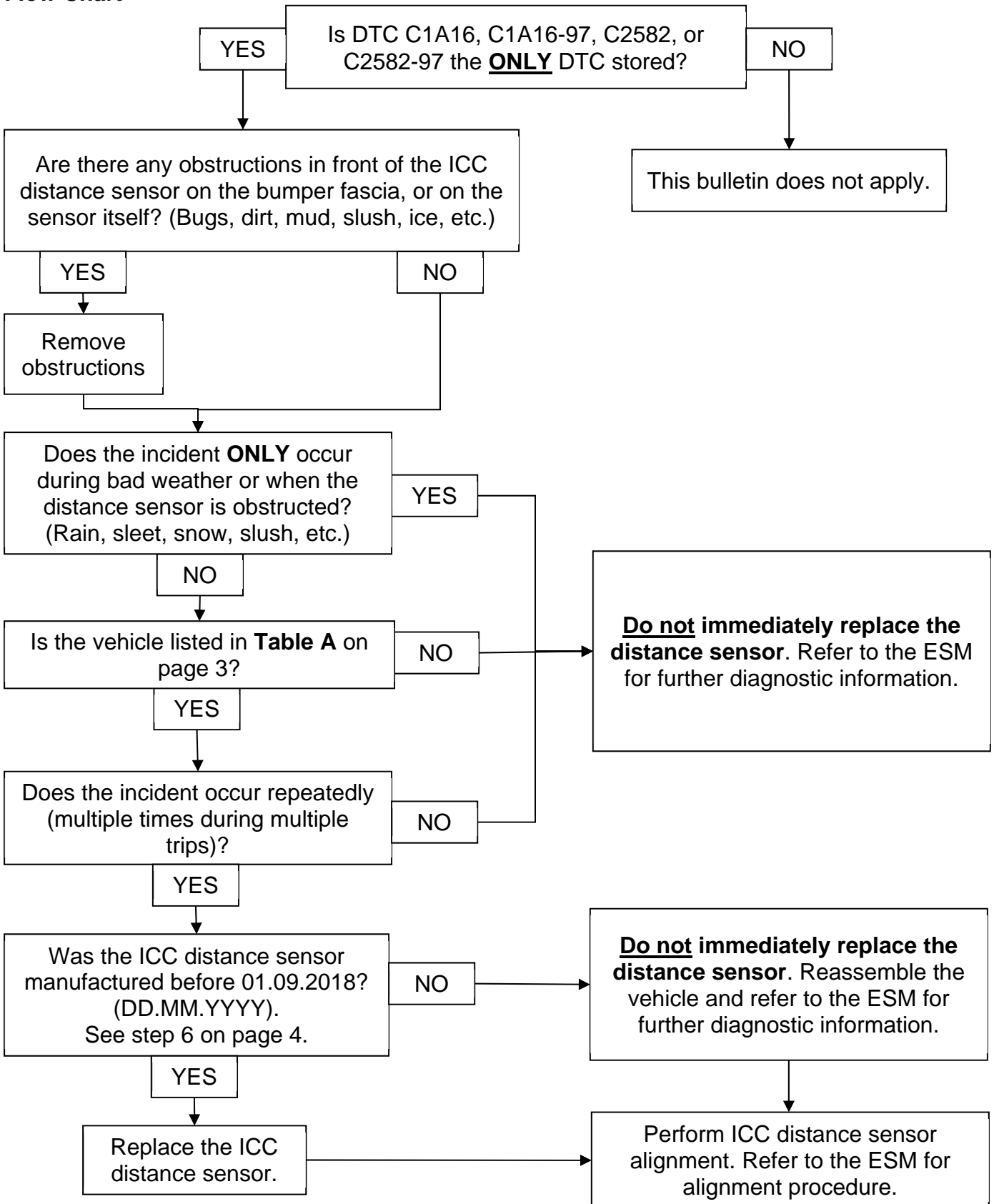
IMPORTANT: The purpose of **ACTION** (on the next page) is to give you a quick idea of the work you will be performing. You **MUST** closely follow the entire **SERVICE PROCEDURE** as it contains information that is essential to successfully completing this repair.

Nissan Bulletins are intended for use by qualified technicians, not 'do-it-yourselfers'. Qualified technicians are properly trained individuals who have the equipment, tools, safety instruction, and know-how to do a job properly and safely. NOTE: If you believe that a described condition may apply to a particular vehicle, DO NOT assume that it does. See your Nissan dealer to determine if this applies to your vehicle.

ACTION

Refer to **Flow Chart**, below.

Flow Chart



SERVICE PROCEDURE

1. Is DTC C1A16, C1A16-97, C2582, or C2582-97 the **ONLY** DTC stored?

YES: Continue to step 2.

NO: This bulletin does not apply. **Do not immediately replace the distance sensor.** Refer to the ESM for further diagnostic information.

2. Are there any obstructions in front of the ICC distance sensor? This can include, but is not limited to, bugs, dirt, mud, slush, ice, etc.

YES: Remove the obstruction, and then proceed to step 3.

NO: Proceed to step 3.

3. Does the incident **ONLY** occur during bad weather? This can include, but is not limited to, rain, sleet, snow, slush, etc.

YES: **Do not immediately replace the distance sensor.** Refer to the ESM for further diagnostic information.

NO: Proceed to step 4.

4. Is the vehicle listed in **Table A**?

YES: Continue to step 5.

NO: **Do not immediately replace the distance sensor.** Refer to the ESM for further diagnostic information.

Table A

2016-2018 Altima
2018 Kicks
2016-2018 Maxima
2015-2018 Murano
2016-2017 Murano Hybrid
2017-2019 Pathfinder built before November 2018
2016-2019 Sentra built before December 2018

5. Does the incident occur repeatedly (multiple times during multiple trips)?

YES: Proceed to step 6.

NO: **Do not immediately replace the distance sensor.** Refer to the ESM for further diagnostic information.

6. Locate and then write down the ICC distance sensor manufacturing date code (see Figure 3).

HINT: In some cases the ICC distance sensor may need to be removed from the vehicle to see the date code. If so, refer to the ESM: **CRUISE CONTROL & DRIVER ASSISTANCE > DRIVER ASSISTANCE SYSTEM > DRIVER ASSISTANCE SYSTEM > REMOVAL AND INSTALLATION > ICC SENSOR (or DISTANCE SENSOR)**

Decoding the manufacturing date code:

- The date code will be displayed as **DD.MM.YYYY** on the back side of the ICC distance sensor.
- A date code of **01.09.2018** translates to the 1st day of the 9th month of **2018**, or September 1, 2018.

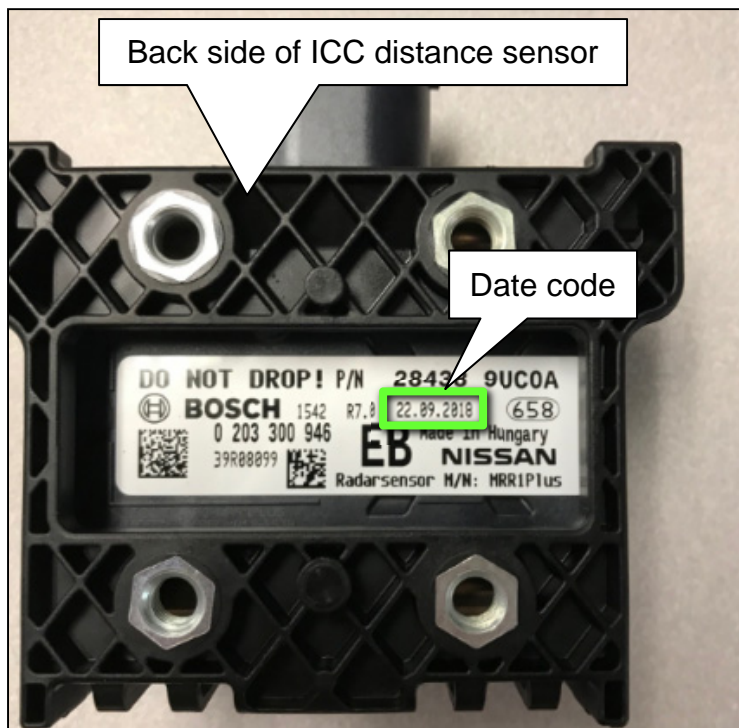


Figure 3

7. Is the date of manufacture on the ICC distance sensor before **01.09.2018**?

YES: Proceed to step 8 on page 5.

NO: Re-install the ICC distance sensor in the reverse order of disassembly, and then proceed to step 9 on page 5.

IMPORTANT: The nuts and bolts of the ICC distance sensor, and its bracket, must be torqued in a specific sequence.

- Refer to the ESM: **CRUISE CONTROL & DRIVER ASSISTANCE > DRIVER ASSISTANCE SYSTEM > DRIVER ASSISTANCE SYSTEM > REMOVAL AND INSTALLATION > ICC SENSOR (or DISTANCE SENSOR)**

8. Install a new ICC distance sensor from **PARTS INFORMATION**.

IMPORTANT: The nuts and bolts of the ICC distance sensor, and its bracket, must be torqued in a specific sequence.

- Refer to the ESM: **CRUISE CONTROL & DRIVER ASSISTANCE > DRIVER ASSISTANCE SYSTEM > DRIVER ASSISTANCE SYSTEM > REMOVAL AND INSTALLATION > ICC SENSOR (or DISTANCE SENSOR)**.

9. Perform distance sensor alignment.

- Refer to the ESM: **BRAKES > BRAKE CONTROL SYSTEM > AUTOMATIC EMERGENCY BRAKING > BASIC INSPECTION > ADDITIONAL SERVICE WHEN REPLACING ICC SENSOR (or DISTANCE SENSOR)**.

PARTS INFORMATION

DESCRIPTION	PART NUMBER	QUANTITY
SENSOR UNIT-DISTANCE (ICC Distance Sensor)	(1)	1 As Needed

(1) Refer to the Electronic Parts Catalog (EPC) for the correct part number.

CLAIMS INFORMATION

Submit a Primary Part (PP) type line claim using the following claims coding:

DESCRIPTION	PFP	OP CODE	SYM	DIA	FRT
Replace SENSOR UNIT-DISTANCE (ICC Distance Sensor)	(1)	RD45AA	HC	32	(2)

- (1) Reference the Electronic Parts Catalog (EPC) and use the Distance Sensor as the Primary Failed Part (PFP).
- (2) Reference the current Nissan Warranty Flat Rate Manual and use the indicated Flat Rate Time (FRT).

HINT: FRT includes all wheel alignment; no other alignment op code is required. DO NOT claim the alignment op code with this claim.

CLAIMS INFORMATION continues on page 6.

OR

Submit a Primary Part (PP) type line claim using the following claims coding:

DESCRIPTION	MODEL	PFP	OP CODE	SYM	DIA	FRT
Remove and reinstall original sensor (ICC Distance Sensor)	Maxima with AVM 2016-2018	(1)	RX8EAA	HC	32	2.9
	Pathfinder with AVM 2017-2019 built before 11/2018					3.0
	Maxima without AVM 2016-2018	(1)	RX8DAA	HC	32	2.5
	Pathfinder without AVM 2017-2019 built before 11/2018					2.6
	Sentra built before 12/2018					2.4
	Altima 2016-2018					2.9
	Kicks 2018					2.0
	Murano 2015-2018 including Murano Hybrid 2016-2017					2.6

- (1) Reference the Electronic Parts Catalog (EPC) and use the Distance Sensor as the Primary Failed Part (PFP).
- (2) Reference the current Nissan Warranty Flat Rate Manual and use the indicated Flat Rate Time (FRT).

HINT: FRT includes all wheel alignment; no other alignment op code is required. DO NOT claim the alignment op code with this claim.

AMENDMENT HISTORY

PUBLISHED DATE	REFERENCE	DESCRIPTION
April 15, 2019	NTB19-033	Original bulletin published
August 13, 2020	NTB19-033a	Latest models and model years applied, and CLAIMS INFORMATION revised
October 30, 2020	NTB19-033b	Latest models and model years applied, DTCs C2582 and C2582-97 added, IF YOU CONFIRM and Figure 1 and Figure 2 on page 1 revised
February 3, 2021	NTB19-033c	Classification number updated
February 4, 2022	NTB19-033D	Publication date revised to include the latest models and model years
June 22, 2023	NTB19-033E	Publication date revised to include the latest models and model years, and "NOTE" references changed to "HINT"
December 19, 2023	NTB19-033F	Flow Chart on page 2 revised, Steps 3, 4, and 5 updated.
February 20, 2025	NTB19-033G	APPLIED VEHICLES revised

