

TECHNICAL SERVICE BULLETIN

Classification: DA23-002A	Reference: ITB23-023A	Date: February 20, 2025
------------------------------	--------------------------	----------------------------

AEB WARNING LIGHT IS ON WITH WARNING MESSAGES DISPLAYED ON COMBINATION METER

This bulletin has been amended. See **AMENDMENT HISTORY** on the last page.
Please discard previous versions of this bulletin.

APPLIED VEHICLES:	2015-2024 Q50 (V37)	2022-2024 QX55 (FJ55)
	2015-2018 Q50 Hybrid (HV37)	2015-2021 QX60 (L50)
	2017-2022 Q60 (CV37)	2022-2024 QX60 (L51)
	2015-2019 Q70 (Y51)	2015-2019 QX60 Hybrid (L50H)
	2015-2018 Q70 Hybrid (HY51)	2015-2024 QX80 (Z62)
	2019-2024 QX50 (J55)	

SERVICE INFORMATION

The AEB system is designed to turn itself OFF during driving conditions (e.g., rain, snow, fog, etc.) that obstruct its sensors. This behavior is normal, and no repairs should be performed. When the AEB system performs an intentional shutdown, the customer may state the following:

- The ICC stopped working while driving,
- The AEB/FEB warning light is ON, or turned ON, while driving (Figure 1),
- The message “Unavailable Front Radar Obstruction” or “Forward Driving Aids Temporarily Disabled Front Sensor Blocked See Owner's Manual” has displayed while driving (Figure 2).

AND

- DTC C1A16, C1A16-97, C2582, or C2582-97 is the **ONLY** DTC stored.

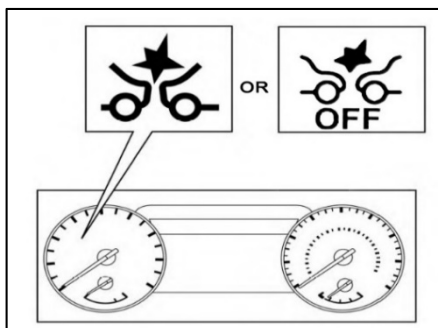


Figure 1

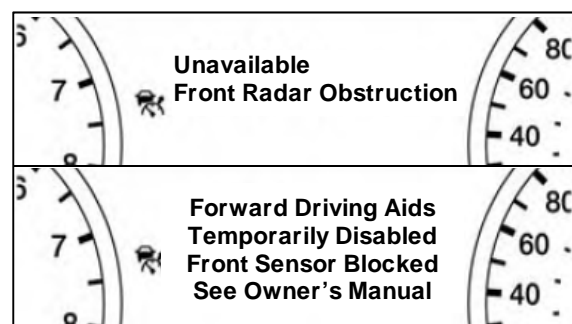
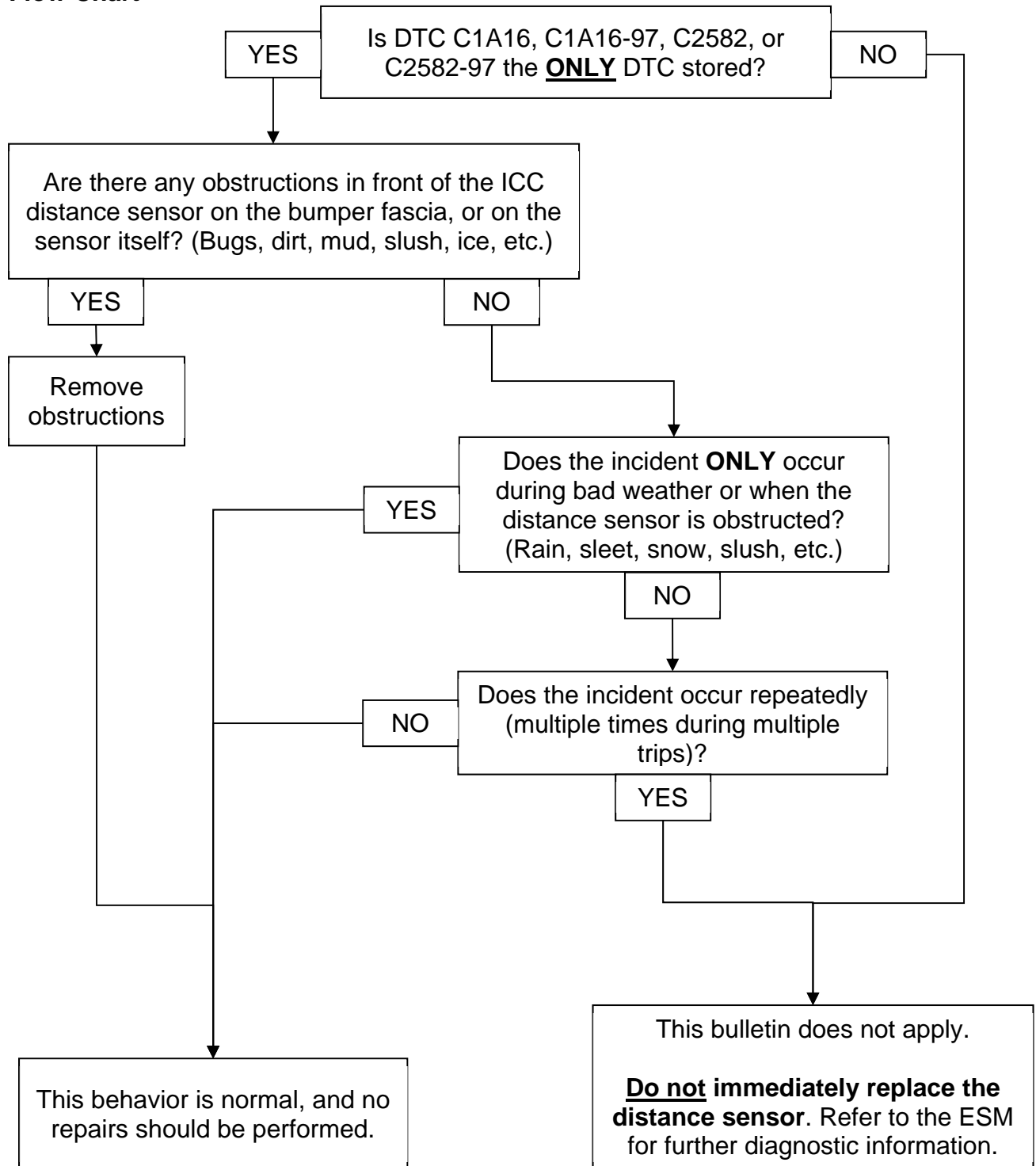


Figure 2

Bulletins are intended for use by qualified technicians, not 'do-it-yourselfers'. Qualified technicians are properly trained individuals who have the equipment, tools, safety instruction, and know-how to do a job properly and safely. **NOTE:** If you believe that a described condition may apply to a particular vehicle, DO NOT assume that it does. See your Infiniti retailer to determine if this applies to your vehicle.

Flow Chart



AMENDMENT HISTORY

PUBLISHED DATE	REFERENCE	DESCRIPTION
July 31, 2023	ITB23-023	Original bulletin published
February 20, 2025	ITB23-023A	APPLIED VEHICLES revised

