



# TECHNICAL SERVICE BULLETIN

## Ting Or Click Noise From The Front Or Rear Wheel Hub When Accelerating, Applying Brakes Or When Shifting Between Drive And Reverse

**25-2044**

18 February  
2025

This bulletin supersedes 22-2395. Reason for update: Revised Service Procedure

**Model:**

<b>Ford</b> 2022-2024 F-150 Lightning	Built on or before 17-Aug-2023
--	--------------------------------

**Markets:** North American markets only

**Issue:** Some of the vehicles listed in the Model statement above may exhibit a ting or click noise from the front or rear wheel hubs when accelerating, applying brakes or when shifting between drive and reverse. This condition may be caused by a stick/slip condition between the hub and halfshaft interface.

**Action:** For vehicles that meet all of the criteria in the Issue and Model statements, follow the Service Procedure to install an anti-ting washer between the wheel hub and axle shaft.

**Parts - Parts To Inspect And Replace Only If Necessary**

Service Part Number	Claim Quantity	Package Order Quantity	Number in Package	Description
W707772-S441	Only If Necessary (1 Per Affected Hub/Axle)	Only If Necessary (1 Possible)	4	Wheel Hub Nut
W706890-S439	Only If Necessary (4 Per Affected Hub/Axle)	Only If Necessary (1 Per Affected Hub/Axle)	4	Wheel Hub Bolt
W719687-S439	Only If Necessary (2 Per Affected Hub/Axle)	Only If Necessary (1 Possible)	4	Rear Caliper Bolt
W720613-S439	Only If Necessary (2 Per Affected Hub/Axle)	Only If Necessary (1 Possible)	4	Front Caliper Bolt
AL1Z-7G273-A	Only If Necessary (1 Per Affected Hub/Axle)	Only If Necessary (1 Per Affected Hub/Axle)	1	Anti-Ting Washer

**Claim Quantity** refers to the total number of individual pieces required to repair the vehicle.

**Package Order Quantity** refers to the amount of the service part number package(s) required to repair the vehicle.

**Number In Package** refers to the number of individual pieces included in a service part number package.

**Only If Necessary** indicates the part is not mandatory. Refer to the Service Procedure to determine the inspection/inclusion criteria.

**Warranty Status:** Eligible under provisions of New Vehicle Limited Warranty (NVLW)/Service Part Warranty (SPW)/Service Part New Vehicle (SPNV)/Extended Service Plan (ESP) coverage. Limits/policies/prior approvals are not altered by a TSB. NVLW/SPW/SPNV/ESP coverage limits are determined by the identified causal part and verified using the OASIS part coverage tool.

**Labor Times**

Description	Operation No.	Time
2022-2024 F-150 Lightning: Road Test The Vehicle To Verify Which Hub(s) Are Exhibiting The Concern (Can Be Claimed With Operations B, C, D, or E)	252044A	0.3 Hrs.
2022-2024 F-150 Lightning: Inspect One (1) Front Wheel Hub And Install Anti-Ting Ring If Necessary (Can Be Claimed With Operations A, D, E)	252044B	0.9 Hrs.

2022-2024 F-150 Lightning: Inspect Both (2) Front Wheel Hubs And Install Anti-Ting Rings If Necessary (Can Be Claimed With Operations A, D, E)	252044C	1.6 Hrs.
2022-2024 F-150 Lightning: Inspect One (1) Rear Wheel Hub And Install Anti-Ting Ring If Necessary (Can Be Claimed With Operations A, B, C)	252044D	0.8 Hrs.
2022-2024 F-150 Lightning: Inspect Both (2) Rear Wheel Hubs And Install Anti-Ting Rings If Necessary (Can Be Claimed With Operations A, B, C)	252044E	1.4 Hrs.

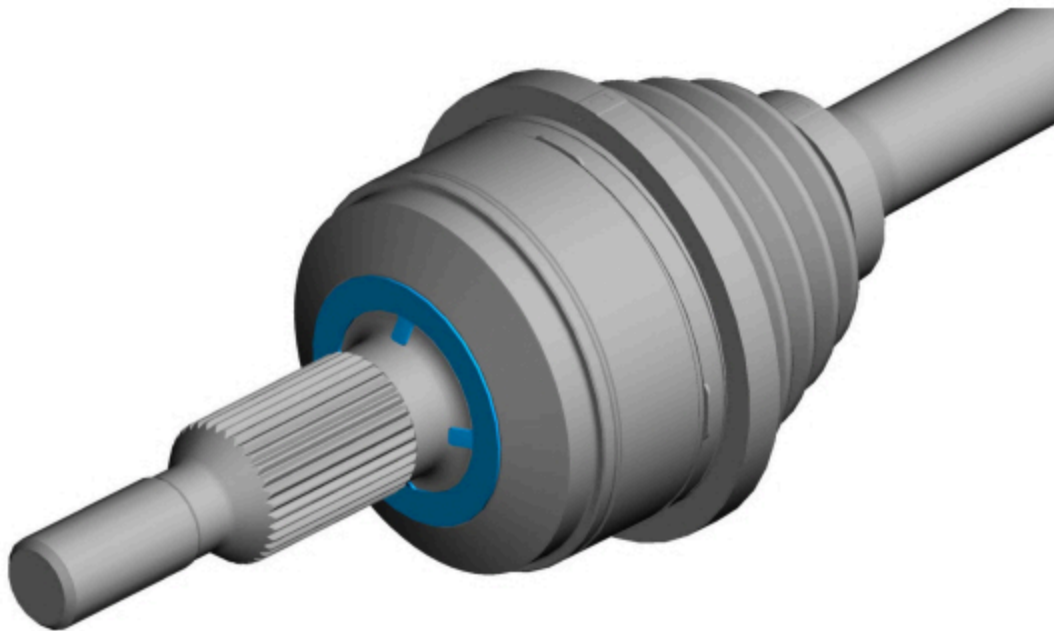
### Repair/Claim Coding

Causal Part:	7G273
Condition Code:	42

## Service Procedure

1. Drive the vehicle to verify which hub or hubs are exhibiting the concern.
  - (1). Accelerate/apply brakes or shift from forward to reverse.
2. Inspect the affected wheel hub to axle shaft interface for an anti-ting washer (Figure 1) by removing the affected wheel hub.

Figure 1



E421773

- (1). For front wheel hubs, refer to WSM Section 204-01B Front Suspension - LHD 4WD > Removal and Installation > Front Wheel Bearing and Wheel Hub - Electric.
  - (2). For rear wheel hubs, refer to WSM Section 204-02 Rear Suspension > Removal and Installation > Wheel Bearing and Wheel Hub - Electric.
3. Does the affected axle shaft have an anti-ting washer installed?
    - (1). Yes - proceed to Step 4.
    - (2). No - install an anti-ting washer on the affected axle shaft (Figure 1) then proceed to Step 4.
  4. Reassemble the vehicle.
    - (1). For front wheel hubs, refer to WSM Section 204-01B Front Suspension - LHD 4WD > Removal and Installation > Front Wheel Bearing and Wheel Hub - Electric.

(2). For rear wheel hubs, refer to WSM Section 204-02 Rear Suspension > Removal and Installation > Wheel Bearing and Wheel Hub - Electric.

---

© 2025 Ford Motor Company

All rights reserved.

NOTE: The information in Technical Service Bulletins is intended for use by trained, professional technicians with the knowledge, tools, and equipment to do the job properly and safely. It informs these technicians of conditions that may occur on some vehicles, or provides information that could assist in proper vehicle service. The procedures should not be performed by "do-it-yourselfers". Do not assume that a condition described affects your car or truck. Contact a Ford or Lincoln dealership to determine whether the Bulletin applies to your vehicle. Warranty Policy and Extended Service Plan documentation determine Warranty and/or Extended Service Plan coverage unless stated otherwise in the TSB article. The information in this Technical Service Bulletin (TSB) was current at the time of printing. Ford Motor Company reserves the right to supersede this information with updates. The most recent information is available through Ford Motor Company's on-line technical resources.