



SIB 17 01 24

2025-02-11

COOLANT LEAK AT CHANGEOVER VALVEThis Service Information Bulletin (Revision 2) replaces SI B17 01 24 **dated April 2024**.**What's New:**

- Claim Information: Labor operation corrected

<input type="checkbox"/>	THIS REPAIR IS MOBILE FRIENDLY
--------------------------	--------------------------------

MODEL

E-Series	Model Description
G26	i4 Gran Coupe Battery Electric Vehicle (BEV)
G60	i5 Sedan (BEV)
G70	i7 Sedan (BEV)
i20	iX Sports Activity Vehicle (SAV BEV)

SITUATION

- There is coolant leaking from under the car
- Low heater output
- Possible Check Control message “Drive, you can continue driving” (ID49)
- Possible fault codes stored in these BEV vehicles:
 - 224163 – Electric auxiliary heater for the high-voltage battery unit: Undervoltage or internal communication fault
 - 8049AA - Coolant level sensor, expansion tank: Coolant level low or short circuit to ground or line disconnection
 - 80124F – Electric auxiliary heater: Communication in electric auxiliary heater faulty
 - 224F60 - Coolant level sensor, expansion tank: Coolant level low or short circuit to ground or line disconnection
 - 224111 - Cooling system for power electronics: Coolant loss detected
 - 224107 - Cooling system for high-voltage battery unit, component protection: Detection of coolant loss

CAUSE

Leakage coming from the coolant changeover valve(s); two or more when applicable.

CORRECTION

Check all the changeover valves (if vehicle has more than one*) for a coolant leak (active) or previous coolant leak (valve has residual coolant dried around it).

Check the production date of the remaining changeover valves (1). Improved valves were produced 5.1.2024 (January 5, 2024) and later.



Replace any* changeover valves PN 64 11 9 462 114) with a production date older than 5.1.2024 (January 5, 2024).

(*) Possible number of changeover valves per model:

G26	1
G60	3
G70	1
i20	2

If no changeover valves are leaking, perform further diagnosis with ISTA and cooling system test equipment.

PROCEDURE

Replace the changeover valve/s. Use the appropriate repair instruction based on model:

G26 and G70: Refer to Repair Instruction **64 12 790**

G60: Refer to Repair Instruction **64 12 790** and **64 12 792** and **17 61 625**

I20: Refer to Repair Instruction **64 12 792** and **17 61 625**

Perform a coolant system bleeding after repairs following ISTA path:

Vehicle management/Service functions/Electric drive/Cooling/Fill and bleed the cooling system.

Perform a functional check of the electric auxiliary heater following ISTA path:

Body/Heating and air conditioning functions/Electric auxiliary heater/Heating and air conditioning functions: electric auxiliary heater

PARTS INFORMATION

To determine the part number(s) that applies to the specific vehicle being repaired, enter the VIN/chassis number into either ETK or AIR, this will consider the specific equipment and/or options that are fitted to the vehicle.

Part Number	Description	Quantity
64 11 9462114	Changeover valve	Up to 3* as applicable
And, if necessary:		
Refer to AIR/ETK	Electric instantaneous water heater (Elektrischer Durchlauferheizer/ electric auxiliary heater)	1

Bulk Supply Materials - Sublet

Part Number	Description	Quantity
83 19 2 468 442	HT-12 Coolant (1 gallon concentrate)	Sublet
Or:		
83 19 5 A32 851	HT-12 Antifreeze RTU (Bulk 1/10 Liter) (Pre-mix)	Sublet

CLAIM INFORMATION

Covered under the terms of the BMW New Vehicle Limited Warranty for Passenger Cars and Light Trucks, or the BMW Certified Pre-Owned Program as applicable below.

Repair Code:	6411900400	G26 G60 G70 I20 BEV Coolant loss at changeover valve
---------------------	-------------------	---

Below are the special flat rate labor operation code choices for this repair.

The vehicle is already in the workshop.

Work Pkg	Labor Operation	Description (Plusposition work)	Labor Allowance
# 1	00 75 857	Checking the coolant level, reading out the fault memory (includes carrying out vehicle test, 00 00 556/61 21 528), replacing all changeover valves, checking the electric auxiliary heater.	As applicable
And:			
If applicable	64 12 821	Additional work: Replacing the electric auxiliary heater.	As applicable

Or:

The vehicle arrives at your center for this repair (No other Main work will be performed or claimed during this workshop visit).

Work Pkg	Labor Operation	Description (Main work)	Labor Allowance
# 2	00 75 272	Checking the coolant level, reading out the fault memory (includes carrying out vehicle test, 00 00 006/61 21 528), replacing all changeover valves, checking the electric auxiliary heater.	As applicable
And:			
If applicable	64 12 821	Additional work: Replacing the electric auxiliary heater.	As applicable

Only one Main work flat rate labor operation code can be claimed per workshop visit.

Claim Repair Comments

Only reference the SIB number and the work package (Pkg) number performed in the technician's RO notes and the claim comments (For example: B17 01 24 WP 1), unless otherwise required by State law.

Additionally, when applicable, add comments to support the replacement of the electric auxiliary heater.

Sublet – Bulk Supply Materials (RO and Claim Comments Required)

Sublet Code 4	Reimbursement for the repair-related bulk supply material (Do not use the BMW part number for claim submission)	Up to \$100.00
----------------------	---	----------------

Sublet reimbursement calculation for claiming the applicable repair-related bulk supply material (BMW part

Copyright ©2025 BMW of North America, Inc.

BMW Antifreeze/Coolant: Claim the corresponding sublet dollar amount for the quantity needed to replace what was drained. The one-gallon concentrate part number quantity for a 50/50 coolant/water solution.

Enter this material cost in sublet and itemize the amount on the repair order and in claim comment section.

BMW Group's AIR Application Resource for Flat Rate Labor Operation Codes

To obtain the corresponding flat rate unit (FRU) allowance information from the BMW Group AIR application resource, start by entering the Chassis Number (the last seven (7) characters of the VIN, select the applicable Model if two or more vehicle choices show), or enter the full VIN (17 characters), click on the "Search" button. Next, click on the "Flat Rate Units" button and enter the flat rate labor operation code in the field to the right, click "Search" to display the Flat Rate Unit Group detail choices.

FEEDBACK REGARDING THIS BULLETIN

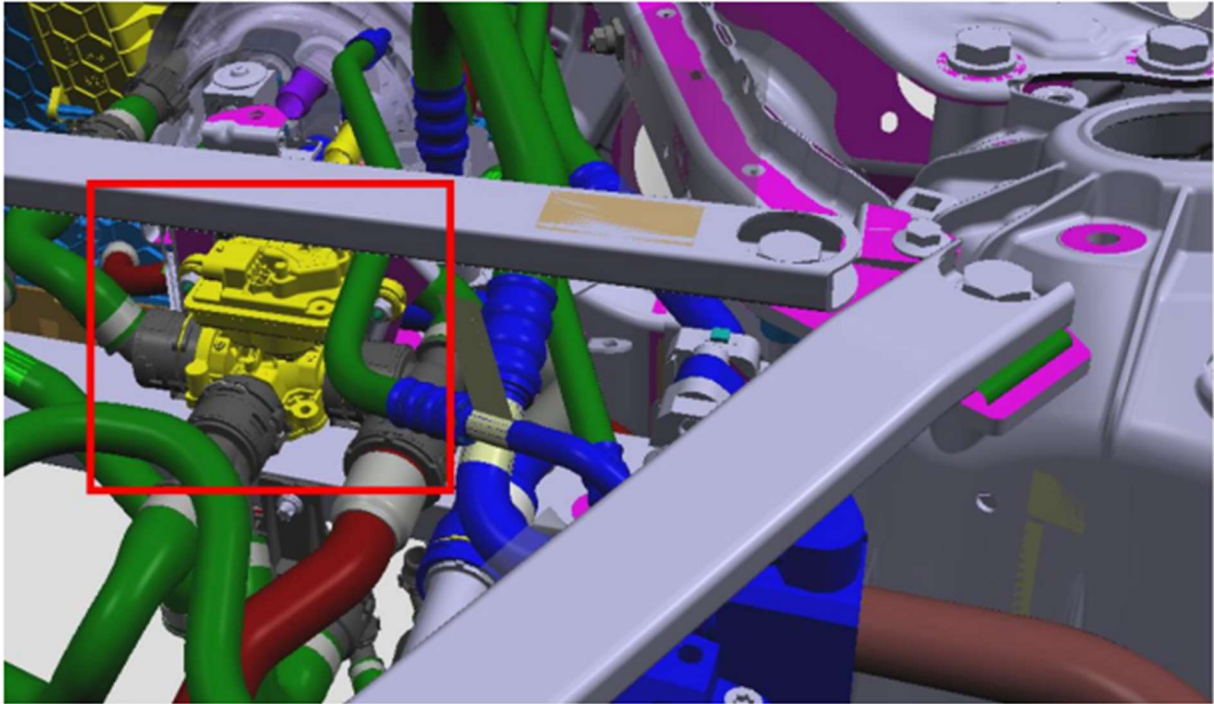
Technical Feedback	To submit feedback for the technical topic of this bulletin: Submit your feedback in the rating box at the top of this bulletin
Warranty Feedback	To submit feedback for the CLAIMS section of this bulletin: Submit an IDS ticket to the Warranty Department, or use the chat available in the Warranty Documentation Portal
Parts Feedback	To submit feedback for the PARTS section of this bulletin: Submit an IDS ticket to the Parts Department

Supporting Materials

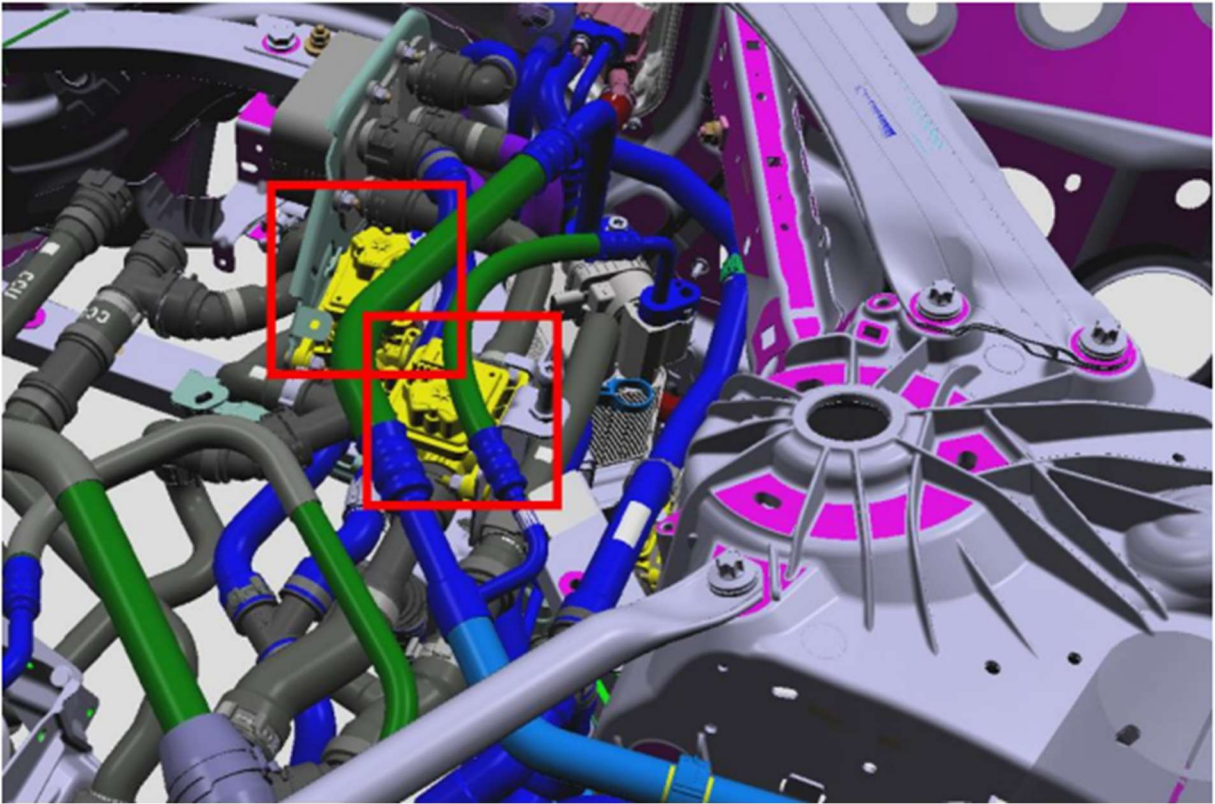
[picture_as_pdf Attachment B17 01 24 Valve Locations.pdf](#)

COOLANT LEAK AT CHANGEOVER VALVE

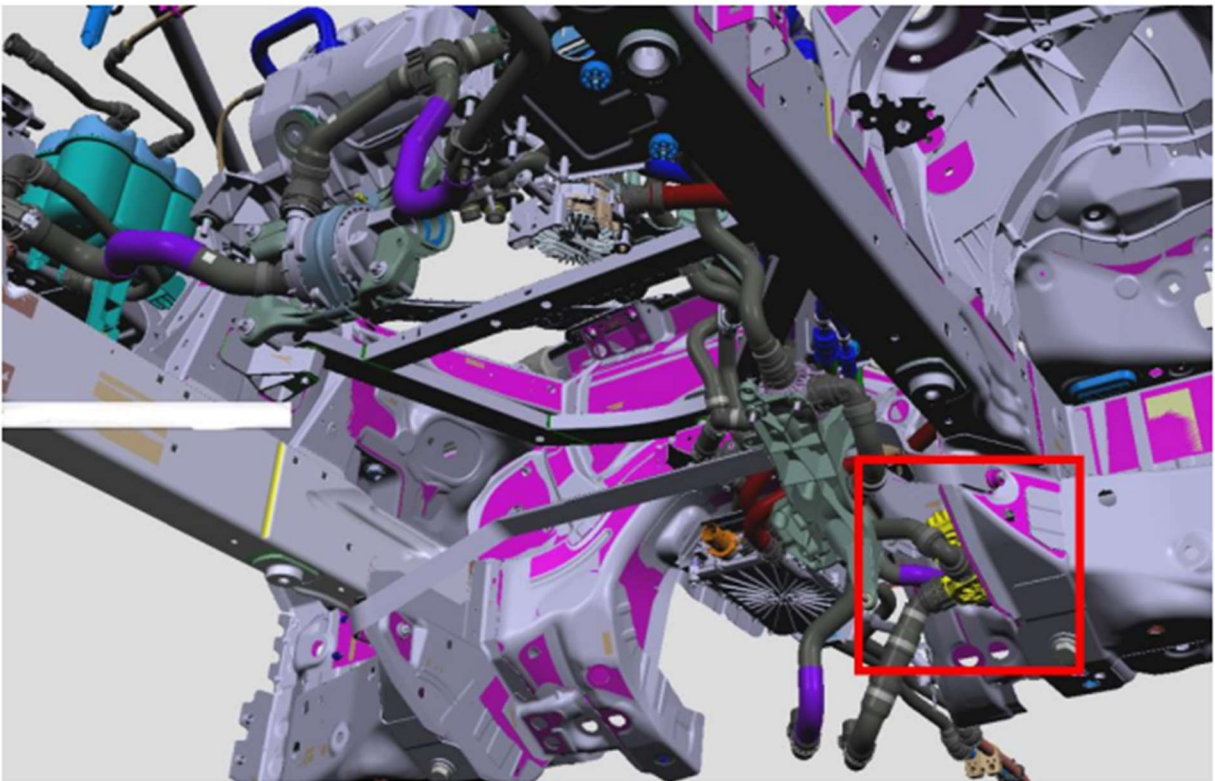
CHANGEOVER VALVE LOCATIONS



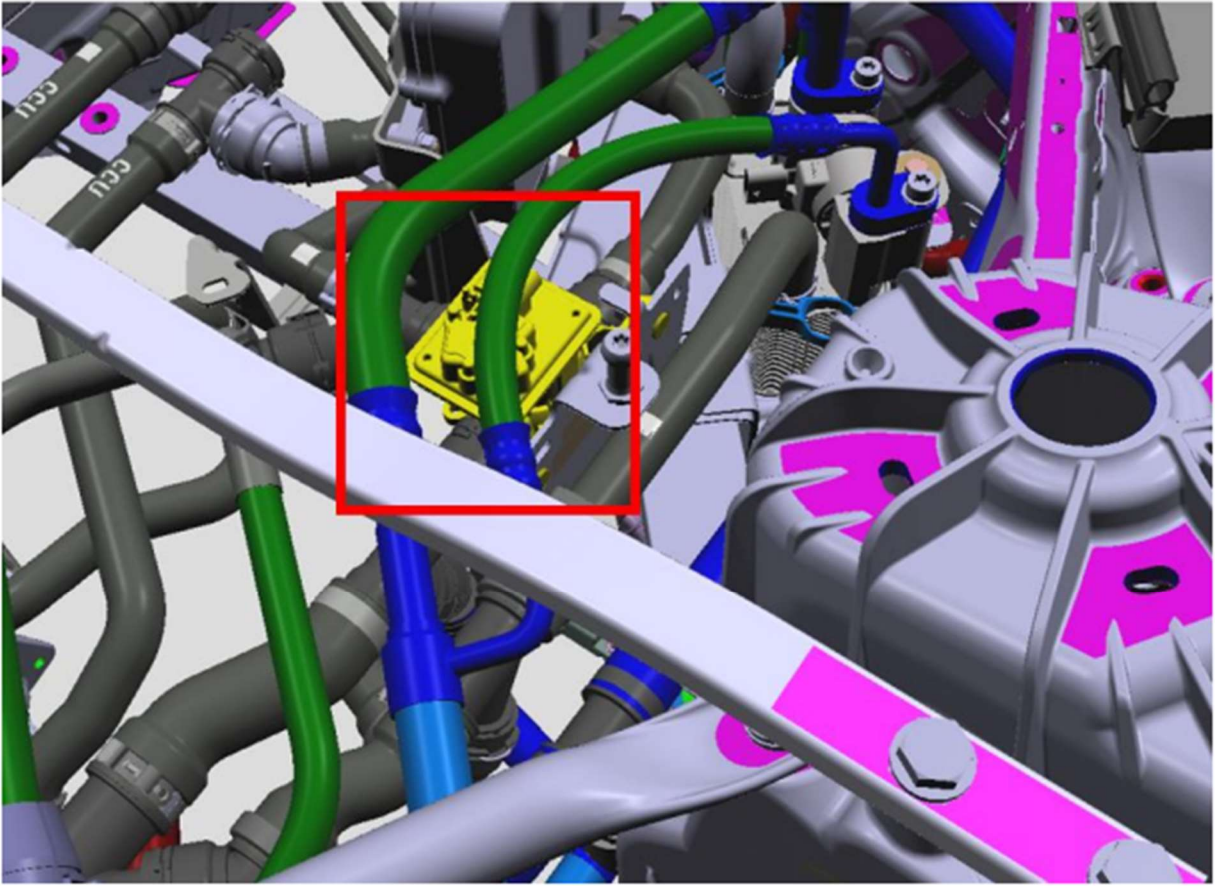
G26



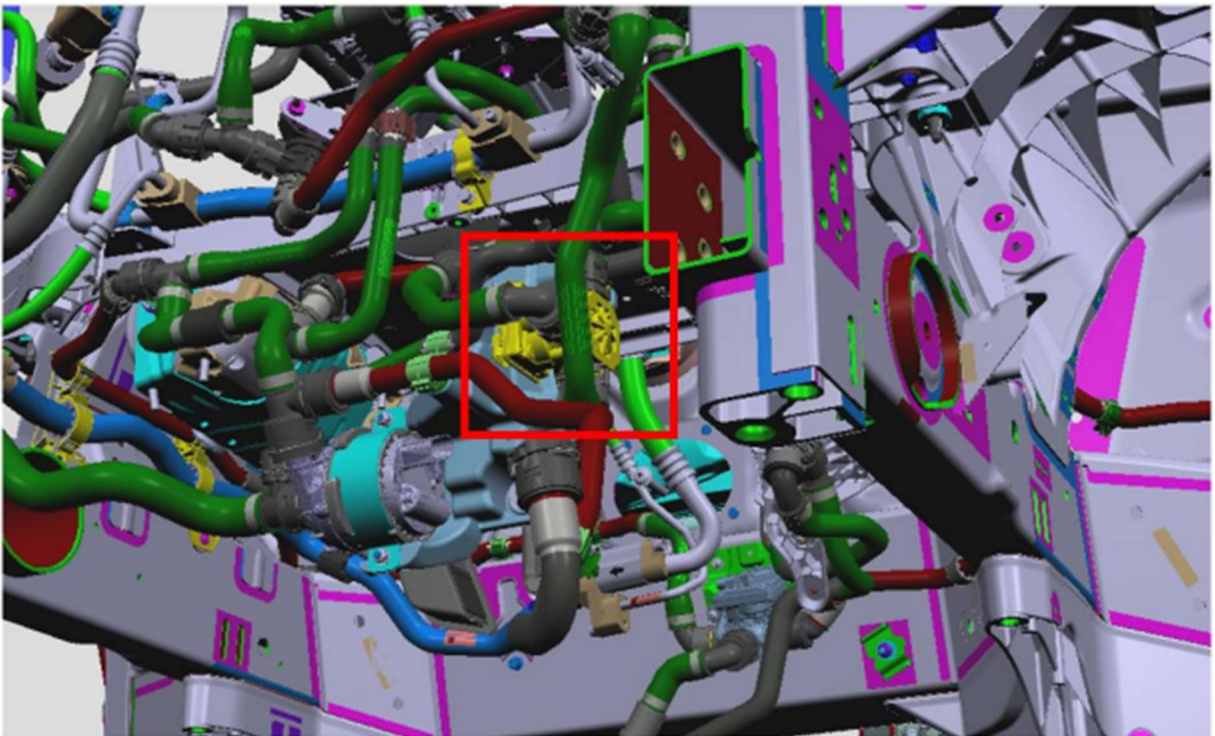
G60 Valves 1 & 2



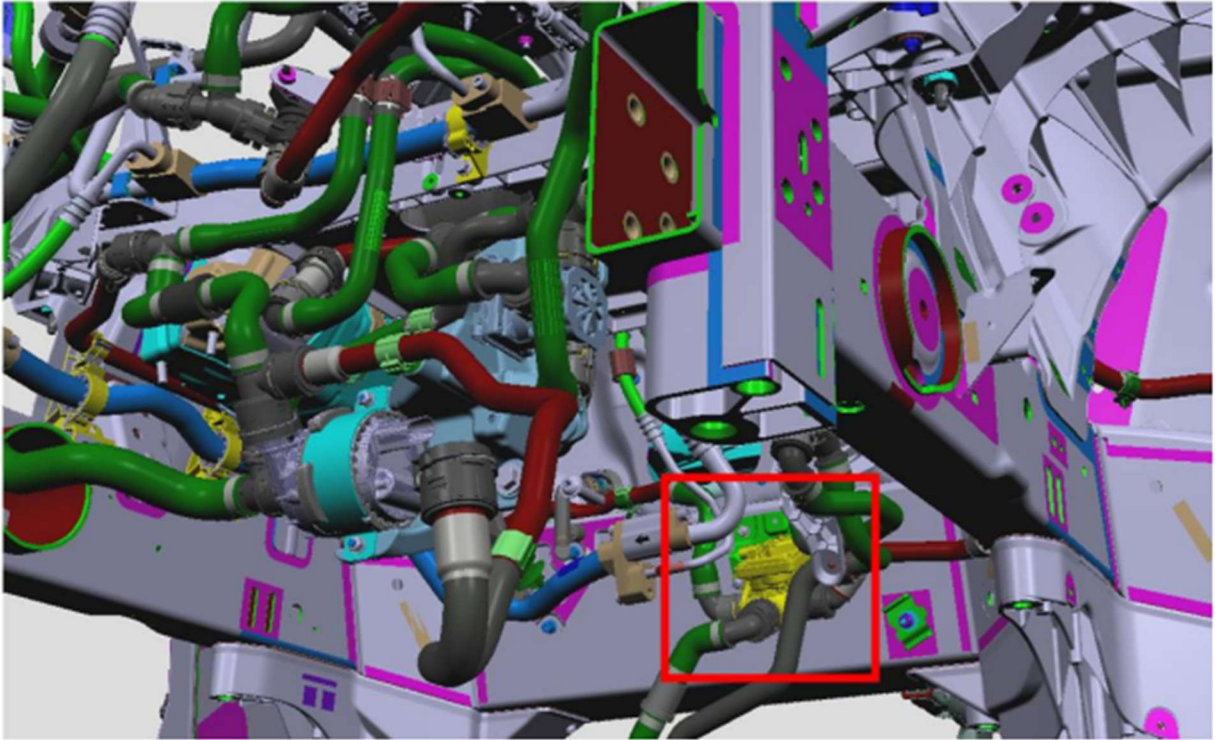
G60 Valve 3



G70



I20 Valve 1



I20 Valve 2