

MAS004453 MCL 25-06

Circular Letter

FROM: Maserati TSO

TO: Maserati Network



Maserati

PERSONAL SERVICE LAB

MASTERS OF CARE

Ghibli QP Center Console Parts Serviceability

DATE: FEBRUARY 14, 2025

Dear Partners,

This communication is intended to provide important information on the serviceability of the Central Tunnel Moulding installed on Maserati vehicles. From now on cupholder and phone box are available as a spare part, and it is possible to service them independently without replacing the complete Central Tunnel Moulding.

MODEL: Ghibli (M157) Quattroporte (M156) (MY19 to Newer)



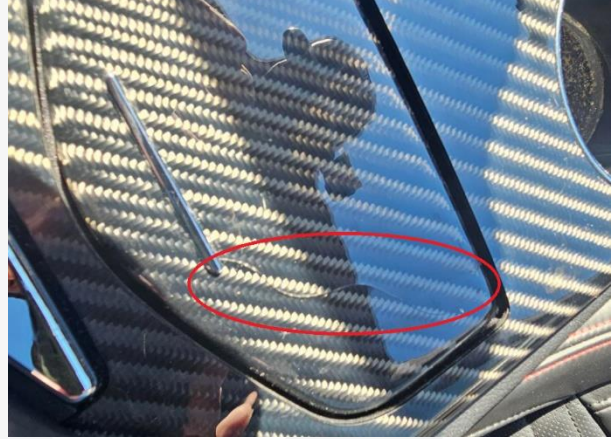
Field Issue Description

In several cases, we've detected cracks formation on the Central Tunnel Moulding (carbon finishing) in different areas (see pics. below).

For this reason and from now on the Cupholder, the Phone box and the Central trim are available as single spare parts for giving you the chance to replace the affected component only; then in case of warranty requests, whenever it's possible, they **MUST** be singularly ordered instead of the complete Central Tunnel Moulding. Warranty Claims differently managed than these Circular Letter instructions will be subject to further review.



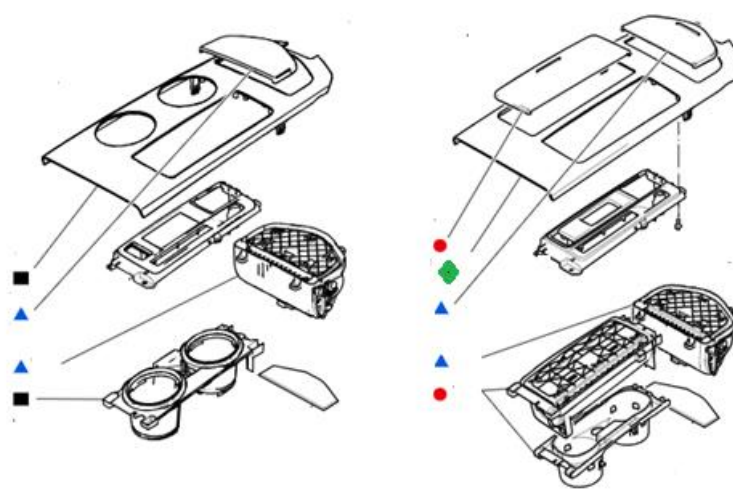
1. Sample pic. of crack presence on the Central Trim



2. Sample pic. of crack presence on the Phone box lid

Components Details

The following components can be serviced independently:



- ▲ 673016870 – CARBON PHONE BOX
- 673016867 – CARBON CENTRAL TUNNEL TRIM PLATE
- ◆ 673016865 – CARBON CENTRAL TUNNEL TRIM PLATE
- 673016868 – CARBON CUPHOLDER

The above P/N are installed on Ghibli and Quattroporte starting from MY19.

Please always refer to the Technical Documentation for the latest updates or contact Maserati Helpdesk.

Workshop Procedure

The procedures for replacement of the trim plates are published in the Technical Documentation in the section:

9.51.084 - CENTRAL FIXING PLATE ON CENTRE CONSOLE

9.51.143 - TUNNEL FRONT GLASS PAN WITH COVER

9.51.142 - TUNNEL PHONE TRAY WITH COVER

Tools

No new Special Tools are needed.

