



Technical Service Bulletin

GROUP CAMPAIGN	NUMBER 25-01-009H
DATE FEBRUARY 2025	MODEL(S) SANTA FE (MX5A)

SUBJECT: IN-CABIN CAMERA (ICC) LOGIC UPDATE
(SERVICE CAMPAIGN TCR)

*** IMPORTANT**

Dealers must perform this service campaign on all affected vehicles prior to customer retail delivery and whenever an affected vehicle is in the shop for any maintenance or repair.

Access the “Vehicle Information” screen via WebDCS to identify open campaigns.

Description: Certain 2024MY Santa Fe (MX5A) vehicles may experience excessive alerts for In-Cabin Camera (ICC) blockage due to driving with hand(s) at the 12 o’clock position. Updating the ICC logic reduces the alerts.

Applicable Vehicles (Certain):

- 2024MY Santa Fe (MX5A) produced from 12/28/2023–10/10/2024

GDS Information:

System	Event #	Description
In-Cabin Camera (ICC)	1206	MX5a ICC LOGIC IMPROVEMENT

(*or use a later available event as listed in the GDS ICC Update screen if one is available.)

Warranty Information:

Model	Op. Code	Operation	Op. Time	Causal Part	Nature Code	Cause Code
Santa Fe (MX5A)	40DA21R0	In-Cabin Camera (ICC) Update	0.3 M/H	96528-R6100	I14	ZZ3

NOTE 1: Submit claim on Claim Entry Screen as “Campaign” type.

NOTE 2: If a part is found in need of replacement while performing this campaign and the affected part is still under warranty, submit a separate claim using the same repair order. If the affected part is out of warranty, submit a Prior Approval request for goodwill consideration prior to performing the work.

NOTE 3: Op times include VIN, Mileage, and photo capture of the “ECU update complete” screen as outlined in the Digital Documentation Policy.

ROM ID Information:

Model	System	ECU Part Number	ROM ID	
			Old	New
Santa Fe (MX5A)	In-Cabin Camera (ICC)	96528-R6100	1.17 / 1.22	1.23

Service Procedure:

STUI



This TSB includes Repair validation photos. Refer to the latest Warranty Digital Documentation Policy for requirements.

NOTICE

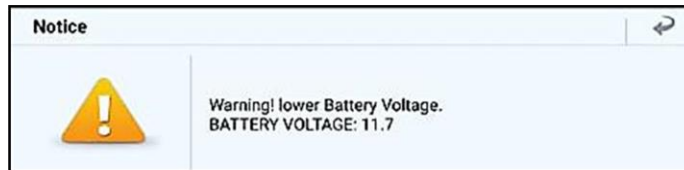
You must initially perform the GDS ECU update in Auto Mode.

- If the ECU update starts but then fails in Auto Mode, perform the update in Manual Mode to recover.

NOTICE

GDS Vehicle Battery Low Voltage Warning:

If voltage is below 12 Volts per the GDS warning, then select **Back** and attach a battery charger to ensure an adequate battery charge for reliable update results. Turn ignition back **ON**, and then retry the ECU update again.



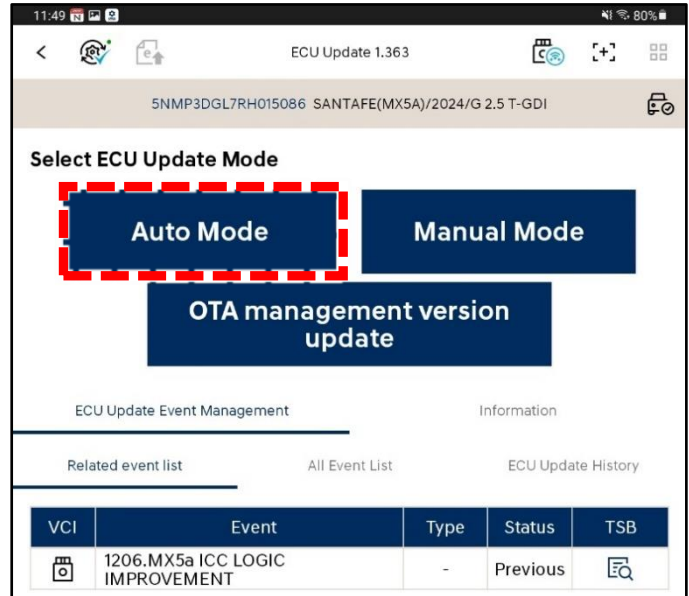
ECU Update Procedure

1. Perform the ECU update in **Auto Mode**.

Use the **ID Check** to verify the ROM ID before updating the software.

i Information

Refer to **TSB # 24-GI-012H**, “**ECU Update Procedure for Tablet-Based GDS-Smart**”, for additional information.



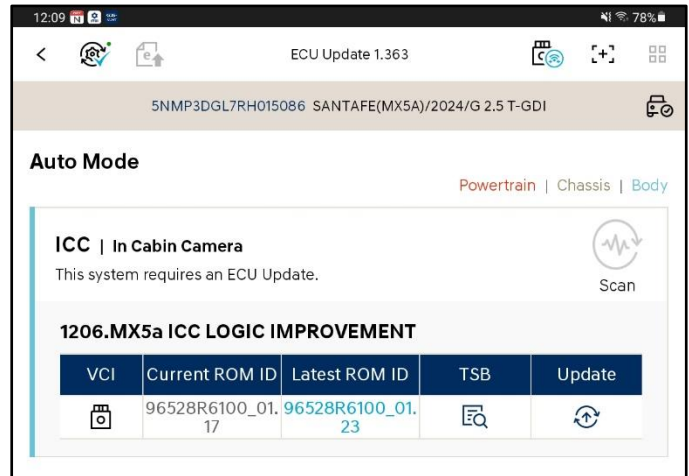
2. Select the **ICC** system to scan the vehicle’s current ROM ID.

NOTICE

Check the current ROM ID version and compare it to the ROM ID Information table before attempting to perform the software update.

NOTICE

If the update fails, please remove the power connector or the battery (–) connector from the indoor fuse box for at least 5 seconds and reassemble it to retry the update.

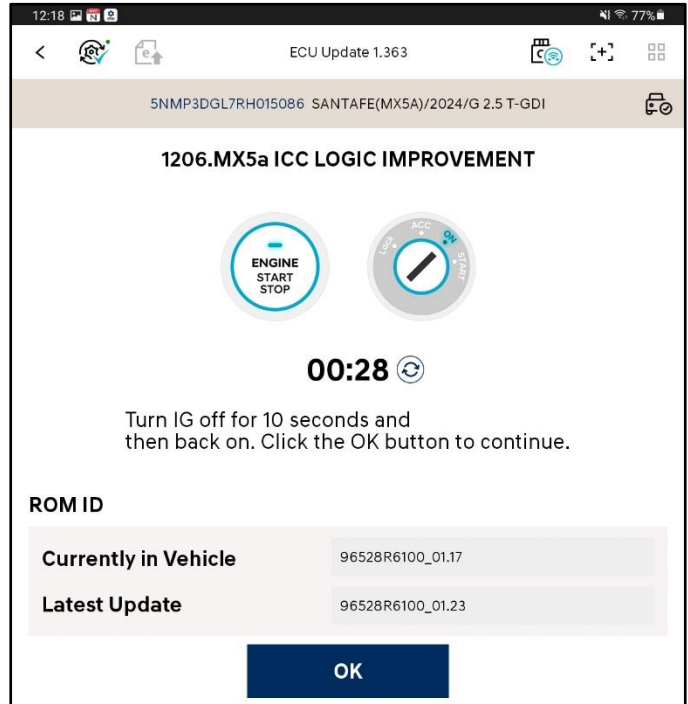


- After the ECU update process shows **100%** complete, follow the prompts on the screen to cycle the ignition **OFF** for at least **10 seconds** to reset the control unit (certain models may take up to **30 seconds**).



Information

Use the **Refresh** button to reset the timer.

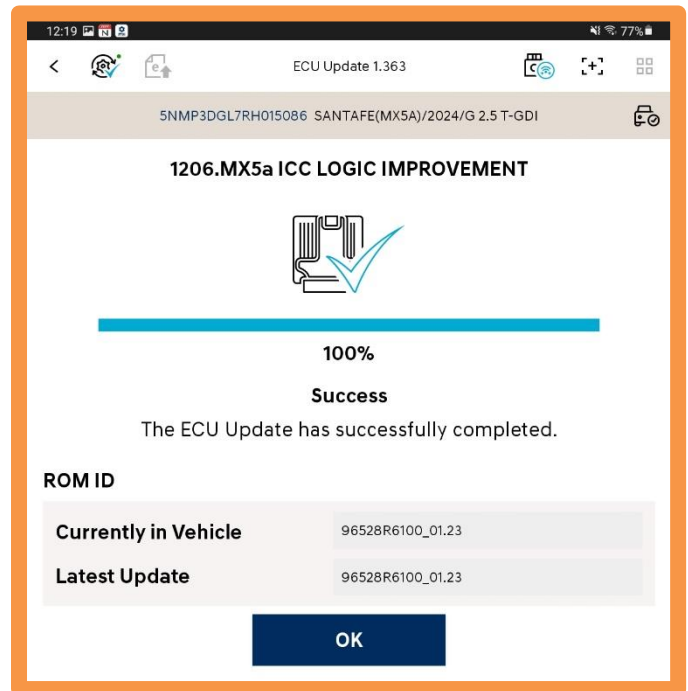


-

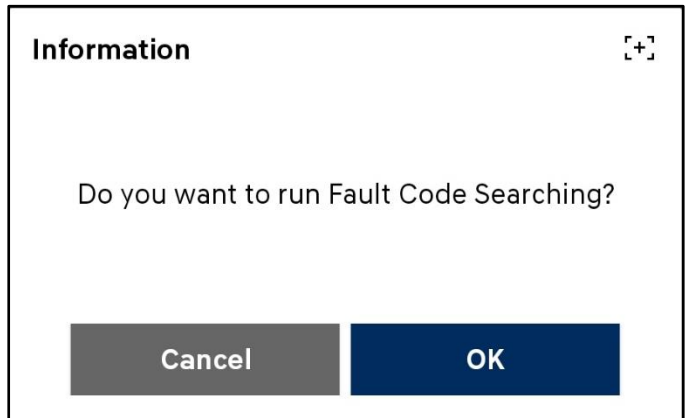
STUI



Take a screenshot of the ECU update complete screen using your tablet and upload to STUI.



5. Perform an **All Systems Fault Code** search and erase DTC history that had incidentally occurred from the ECU update.



6. Start the engine to confirm proper operation of the vehicle.

NOTICE

If the ECU update fails in Auto Mode, perform the update in Manual Mode using the password(s) below.

Manual Mode Password:

ECM Menu	Password
MX5A ICC 96528-R6100	6258