

Super White 040 Paint Peeling from Affected Panel(s)

Service**Category** Vehicle Exterior**Market** USA and
Mexico**Section** Exterior Panels/TrimToyota Supports
ASE Certification **Applicability**

YEAR(S)	MODEL(S)	ADDITIONAL INFORMATION
2016 - 2022	Tacoma	

REVISION NOTICE

January 17, 2025 Rev1:

- The Introduction and Confirmation Procedure sections have been updated.

Any previous printed versions of this bulletin should be discarded.

Introduction

Some 2016 – 2022 model year Tacoma vehicles with Super White (040) paint may exhibit paint peeling along the exterior window door frames, inner fender edges under the hood, and/or A-pillars. The affected panel(s) require repainting to address this condition. The paint repair may need to be sublet to a body shop. Follow the Confirmation Procedure in this bulletin to verify the presence of this condition.

Super White 040 Paint Peeling from Affected Panel(s)

Warranty Information

For USA Market

CLAIM TYPE	OP CODE	DESCRIPTION	TIME	OFP	T1	T2
Paint	P + (Applicable T-3 Code)	Condition Confirmed – Sublet to Body Shop	0.0	N/A	69	82

NOTE

- Use sublet type “PT” for body shop repairs. The invoice is required to be attached to the warranty claim.
- Reimbursement for documenting the condition through the 23TE08 Inspection Website can be claimed under sublet type “ZZ” using the following formula: *0.8 hours x Dealer Hourly Warranty Labor Rate*.
- Select ALL applicable T-3 position codes.
- If Genuine Toyota parts are needed, claim under replacements parts.
- See Warranty Policy 4.12 for additional information on paint claim submission.

APPLICABLE WARRANTY

- **This repair is covered under the Toyota Basic Warranty. This warranty is in effect for 36 months or 36,000 miles, whichever occurs first, from the vehicle’s in-service date.**
- **Warranty application is limited to occurrence of the specified condition described in this bulletin.**

Super White 040 Paint Peeling from Affected Panel(s)

Warranty Information (continued)

For Mexico Market

CLAIM TYPE	OP CODE	DESCRIPTION	TIME	OFP	T1	T2
Paint	P + (Applicable T-3 Code)	Condition Confirmed – Sublet to Body Shop	0.0	N/A	69	82

NOTE

- Use sublet type “PT” for body shop repairs. The invoice is required to be attached to the warranty claim.
- Reimbursement for documenting the condition through the 23TE08 Inspection Website can be claimed under sublet type “ZZ” using the following formula: *0.8 hours x Dealer Hourly Warranty Labor Rate*.
- Select ALL applicable T-3 position codes.
- If Genuine Toyota parts are needed, claim under replacements parts.
- See Warranty Policy 4.12 for additional information on paint claim submission.

APPLICABLE WARRANTY

- **This repair is covered under the Toyota Basic Warranty. This warranty is in effect for 36 months or 60,000 kilometers, whichever occurs first, from the vehicle’s in-service date.**
- **Warranty application is limited to occurrence of the specified condition described in this bulletin.**

Super White 040 Paint Peeling from Affected Panel(s)

Confirmation Procedure

1. Confirm the condition exists.
Inspect the vehicle to determine if it exhibits paint peeling along the exterior window door frames, inner fender edges under the hood, and/or A-pillars, as shown in Figures 1 – 4.
 - A. Is the location of the paint condition on the door window frames, inner fender panels, and/or A-pillar panels?
 - **YES** — Continue to substep B.
 - **NO** — This bulletin does NOT apply. Continue diagnosis using the applicable Repair Manual.
 - B. Is the paint peeling?
 - **YES** — Continue to substep C.
 - **NO** — This bulletin does NOT apply. Continue diagnosis using the applicable Repair Manual.

Figure 1. Paint Peeling on Door Frame



Figure 2. Paint Peeling on Inner Fender

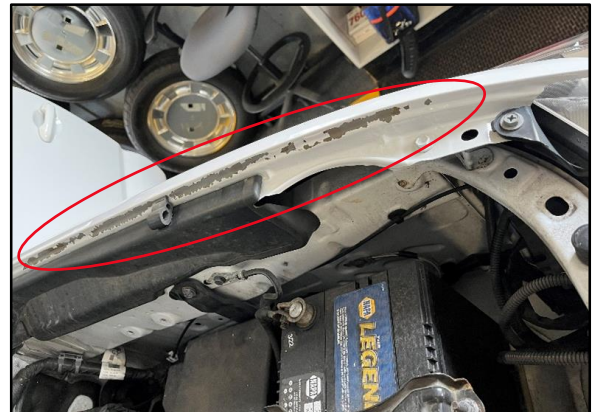
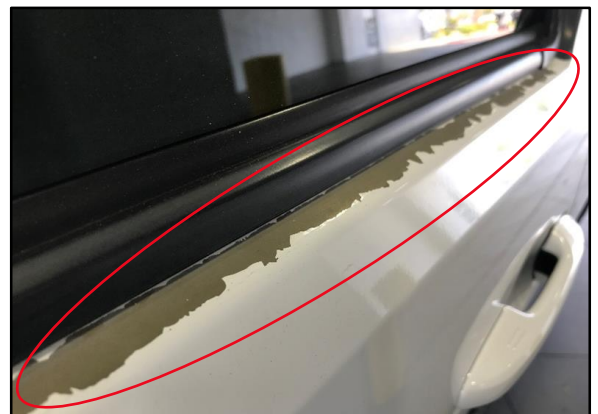


Figure 3. Paint Peeling on Door Frame



Super White 040 Paint Peeling from Affected Panel(s)

Confirmation Procedure (continued)

- C. Is there evidence of outside influences on the affected panel(s) that may have caused the condition?

NOTE

Examples of outside influences include previously damaged or deformed panels, aftermarket paint, bird droppings, or chemicals.

- **YES** — This bulletin does NOT apply. Continue diagnosis using the applicable Repair Manual.
- **NO** — Continue to step 2.

Figure 4. Paint Peeling on A-pillar



2. Take a photograph of each affected panel that clearly displays the condition.
3. Upload the images of each affected panel to the [23TE08 Inspection Website](#) and send the vehicle to a body shop to have the affected panel(s) repainted.