



# Service Bulletin

Bulletin No.: 10-08-110-001L

Date: January, 2025

## INFORMATION

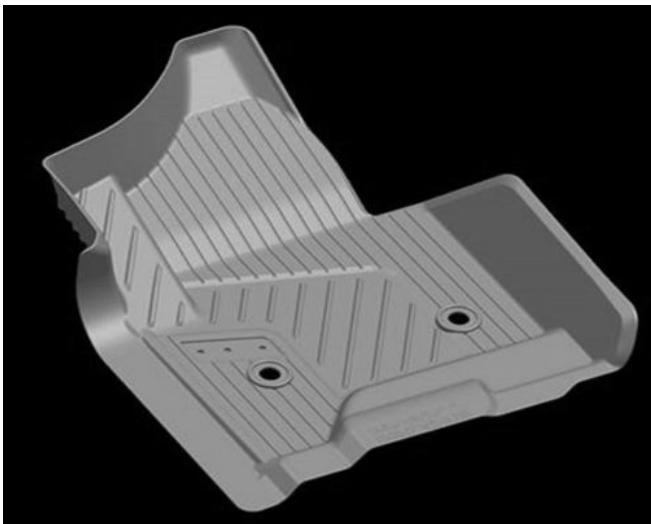
**Subject:** Information on Proper Use of Floor Mats

**Models:** 2026 and Prior GM Passenger Cars and Trucks (including Medium Duty)

**Attention:** This bulletin also applies to any of the above models that may be Export from North America vehicles.

This bulletin has been revised to add the 2026 Model Year. Please discard Corporate Bulletin Number 10-08-110-001K.

**Important:** Service agents must comply with all International, Federal, State, Provincial, and/or Local laws applicable to the activities it performs under this bulletin, including but not limited to handling, deploying, preparing, classifying, packaging, marking, labeling, and shipping dangerous goods. In the event of a conflict between the procedures set forth in this bulletin and the laws that apply to your dealership, you must follow those applicable laws.



4754978

GM's carpeted floor mats, all-weather (rubber) floor mats, and molded floor liners as shown above, are specially designed for use in specific GM vehicles. Using floor mats that were not designed for the specific vehicle or using them incorrectly may cause interference with the accelerator or brake pedal. Please review the following safety guidelines regarding proper driver's side floor mat usage with the customer.

**Warning:** *If a floor mat is the wrong size or is not properly installed, it can interfere with the accelerator pedal and/or brake pedal. Interference with the pedals can cause lack of power, failure to downshift, and unusual transmission shifting caused by the mat between the pedal and the floor unintended acceleration and/or increased stopping distance which can cause a crash and injury. Make sure the floor mat does not interfere with the accelerator or brake pedal.*

- Do not flip the driver's floor mat over (in an effort to keep the floor mat clean).
- Do not place anything on top of the driver's floor mat (e.g. carpet remnant, towel).

- Do not place another mat on top of the driver's floor mat (e.g. do not place all-weather rubber mats over carpeted floor mats).
- Only use floor mats that are designed specifically for your vehicle.
- When using replacement mats, make certain the mats do not interfere with the accelerator or brake pedal before driving the vehicle.
- Only use the GM mat with the appropriate retainer style (button, hook or knob retainer) that matches the design that came equipped on the vehicle.
- If a vehicle is designed with a floor mat retainer on the driver's side, it must be used.
- Do not use floor mats on rubber floored vehicles.

In addition to the safety concerns listed above the customer may experience engine and or transmission shift performance concerns. Aftermarket or floor mats placed on top of existing floor mats may contribute to the following conditions.

- Possible Crank No Start
- Engine will not obtain maximum RPM or Wide-Open Throttle (WOT)
- Engine lacks power, poor acceleration performance at Wide-Open Throttle (WOT)
- Engine lacks throttle response
- Transmission will not downshift under Wide-Open Throttle (WOT)
- Transmission will not upshift under Wide-Open Throttle (WOT)



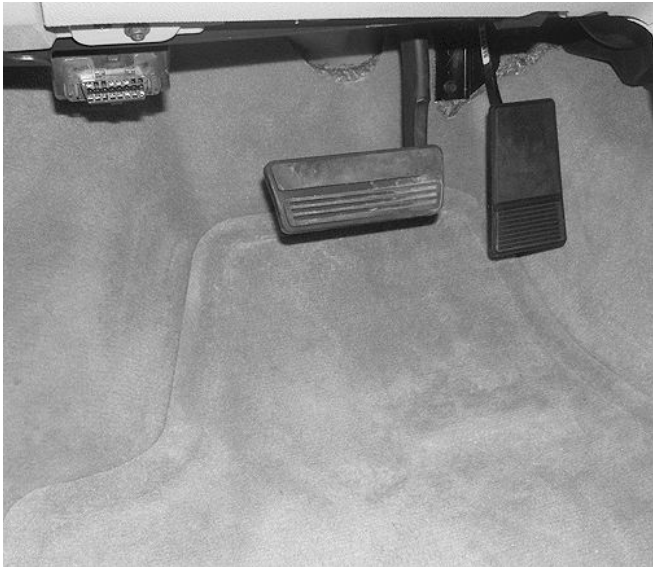


2421101

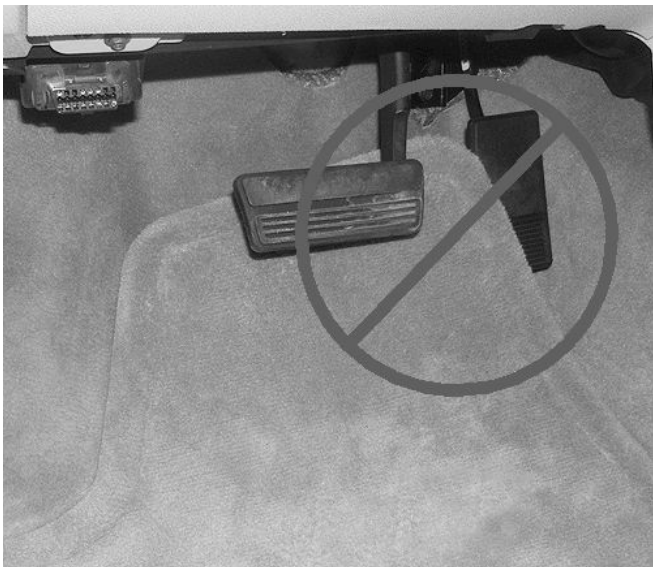


4040692

If your vehicle is equipped with a floor mat retaining button(s), hook(s) or knob(s), make certain the mat is installed correctly and according to the instructions.



2421861



2421862

**Note:** The graphic above shows how the Possible Crank No Start Condition can be caused. If the accelerator pedal is fully depressed and the ignition is switched to the start position, this initiates clear flood mode. The engine will crank over but not start as fuel is cut in order to clear the cylinders. An improperly installed floor mat causing the pedal to be depressed could initiate clear flood mode.

After installing floor mats, make certain they cannot move and do not interfere with the accelerator or brake pedals.

**Additional SI Keywords:** Possible Crank No Start