



TECH TALK - VOLUME 284 JANUARY/FEBRUARY 2025

INSIDE THIS ISSUE:

Technical Information - Page 1
Bulletin Review - Page 9
Technical Training - Page 10
News & Notes - Page 11

TECHNICAL INFORMATION: HUB NUT REMOVAL PROCEDURE

AFFECTED VEHICLES:

Outlander and Outlander Plug-in Hybrid

GROUP: 26

Some models have a crimping type hub nut. If the crimped (stacked) area of the hub nut is not properly released before the nut is removed, the threaded portion of the axle shaft can be damaged, resulting in unnecessary axle shaft replacement. This article is to remind technicians of the removal procedure.



Damaged axle shaft

UPCOMING HOLIDAY:

Monday, Feb 17th
Presidents' Day

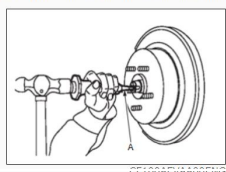
DEALER TECHNICIANS:

We'd like to hear from you!

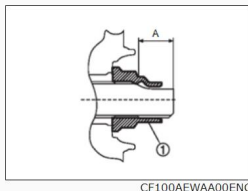
Please submit tips and suggestions for future Tech Talk articles to:
servicesupport@mmsa.com

Removal Procedure of Hub Nut

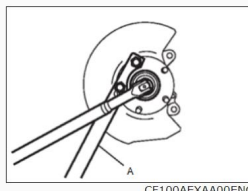
Using lock nut chisel (SST: KV40108800) (A), release stacked area of wheel hub lock nut.



NOTE:
Stacked area is about 22.5 mm (0.886 in) (A) of wheel hub lock nut ①.



Loosen wheel hub lock nut, using a hub lock nut wrench (SST: KV40104000) (A).



CAUTION:

- Never use a power tool.
- When rotation of locknut does not turn smoothly, release stacked area is performed again.

NOTE:

1. There are 2 types of lock nut chisels, so be sure to use the correct tool for the vehicle. For Outlander/Outlander Plug-in Hybrid: KV40108800. For other models: MB992700.
2. Regarding the procedure for models other than Outlander/Outlander-Plug-in Hybrid, please refer to the workshop manual.



Eco-friendly with the award to prove it - the 2025 Outlander Plug-in Hybrid has been named 2025 Family Green Car of the Year™ by Green Car Journal⁶.

⁶ For more information, see GreenCarJournal.com.



TECHNICAL INFORMATION: PAINT SURFACE DAMAGE PREVENTION

AFFECTED VEHICLES:

All

GROUP: 6

CONCERN:

This article highlights the damage that brake fluid and bird droppings can cause to the paint surface and the importance of car washing after maintenance or when vehicles are stored in an open-air environment.

CAUSE:

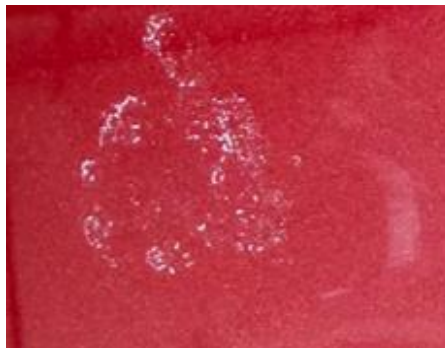
If brake fluid is left unattended for an extended period on painted surfaces of the vehicle, it can cause damage or discoloration to the paint and may even cause the paint surface to peel away which could lead to rust/corrosion occurring on the body panel. Brake fluid is water-soluble, so immediately wash with water if brake fluid is spilled on a painted surface.

- **Never spill or splash brake fluid on painted surfaces. Brake fluid may seriously damage paint. Wipe it off immediately and wash with water if it gets on a painted surface. For brake component parts, never wash them with water.**



Damage caused by brake fluid

If you store vehicles in an open-air environment, you may find bird droppings deposited on the vehicles. If bird droppings remain on the vehicles for an extended period, due to the chemical reaction from acid, it can damage the paint surface. Check the paint condition regularly and wash the vehicle when bird droppings are found.



Damage caused by bird droppings

TECHNICAL INFORMATION: DRIP RAIL MOULDING REPLACEMENT

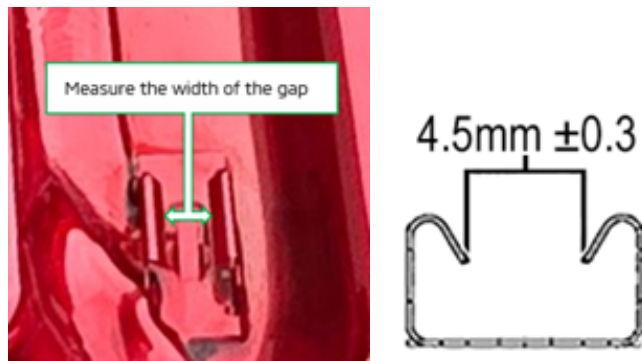
AFFECTED VEHICLES:

2022-2024 Eclipse Cross (without sunroof)

GROUP: 51

When replacing drip rail mouldings, it is important to verify the integrity of the clip. The correct clearance between the claws of the clip is 4.5mm \pm 0.3. Refer to Group 51 "Exterior" for replacement procedures.

A PRC entry is required for this repair. Please refer to TIN-24-42-001 for instructions and requirements.



TECHNICAL INFORMATION: DOOR LOCK SWITCH FITTING PROCEDURE AND PRECAUTIONS

AFFECTED VEHICLES:

Outlander and Outlander Plug-in Hybrid

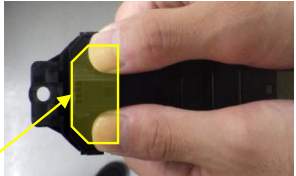
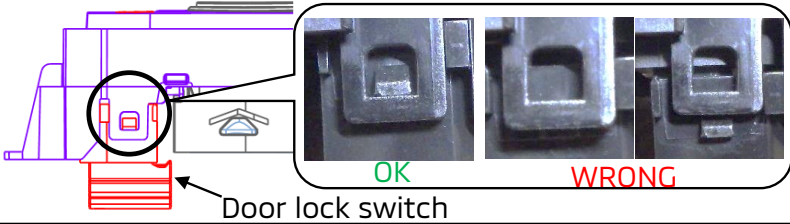
GROUP: 42

When the power window main switch is replaced, the door lock switch may not return to its original position after being pressed (Figure 1).

This may be due to a poor fit when installing the door lock switch to the power window main switch. The procedure and precautions for fitting the door lock switch are as follows:



Figure 1 Example of Occurrence

Procedure	Precautions
(1) Check that there is no damage or deformation to the PW main switch and the door lock clip.	Replace if damaged or deformed.
(2) Install the PW main switch.	Place it on the mating part and push it in with both thumbs until you hear a "click" sound. 
(3) Check that the left and right clips are completely engaged into the PW main switch.	 Door lock switch
(4) Press the door lock switch to make sure it does not recede into the armrest.	-

TECHNICAL INFORMATION: PRECAUTIONS AFTER DRIVING ON SALTED ROADS

AFFECTED VEHICLES:

All

GROUP: 00

Road salt used in the winter time may cause vehicle part to severely rust. To prevent this corrosion, please note the following precautions and inspection maintenance.

- Ask customer to wash and maintain their vehicle after driving in areas where road salt has been used. If severe corrosion is found, please recommend having it repaired.
- Customers who use their vehicles in coastal/island areas are also requested to wash their vehicles periodically. If severe corrosion is found, please recommend repairs.

Note:

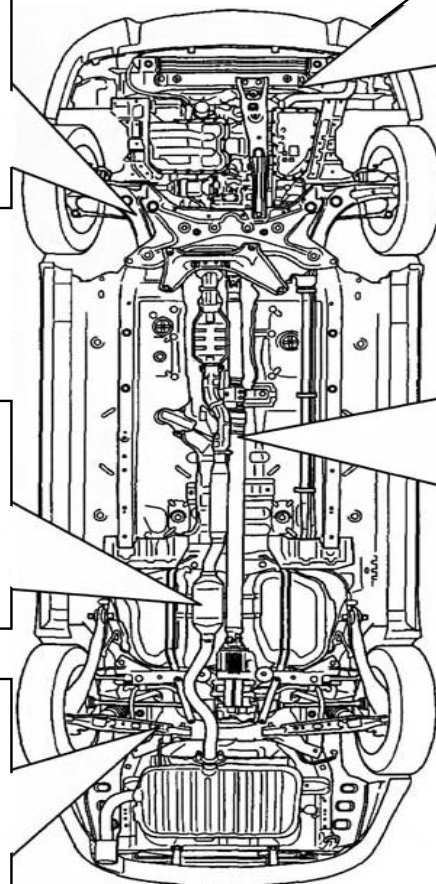
1. It is important to remove the undercover, and check for mud intrusion or accumulation on the vehicle's underside, including engine compartment.
2. When the engine bay area is washed, be careful not to splash water on connectors.
3. For Outlander Plug-in Hybrid, do not wash the vehicle while it is charging. Also, do not use a high-pressure washer on the underneath of the vehicle.

Main Points to Check

●Frame
Check the condition of welds and plate mating parts and clean any deposits of mud or other contaminants.

●Exhaust parts
Check the condition of welds and plate mating parts and clean any deposits of mud or other contaminants.

●Undercarriage parts
Check the condition of welds and plate mating parts and clean any deposits of mud or other contaminants.



●Around the Engine
• Covers
• Pipes
• Brackets
Please check the condition and clean any mud or other contaminants that may be present.

●Around the Propeller shaft
Please check the condition of the flange and surrounding bolts. And clean any mud or other contaminants. (After cleaning, check the condition of grease on sliding parts.)

●Other
Brake piping
Fuel piping
Please check the condition and clean any mud or other contaminants.

TECHNICAL INFORMATION: REAR DISC PAD PROCEDURE

AFFECTED VEHICLES:

All vehicles equipped with Electronic Brakes

GROUP: 35

MMNA was recently aware that some technicians may not be aware of the following rear disc pad procedure. This procedure is required when replacing rear disc pads on vehicles equipped with Electronic Brakes.

Outlander Plug-in Hybrid:

MAINTENANCE MODE <VEHICLES WITH ELECTRIC PARKING BRAKE SYSTEM>

M1351019300033

When the system enters the maintenance mode, the electric parking brake will be released completely. Then you can push back the brake piston to replace the rear brake pad or the rear disc brake rotor. Use the scan tool (M.U.T.-III) or the switch to make the system enter the maintenance mode.

Use the scan tool (M.U.T.-III) to make the system enter the maintenance mode.

Required Special Tools:

- MB992744: Vehicle communication interface-Lite (V.C.I.-Lite)
- MB992745: V.C.I.-Lite main harness A
- MB992747: V.C.I.-Lite USB cable short
- MB992748: V.C.I.-Lite USB cable long
- MB991958: Scan Tool (M.U.T.-III Sub Assembly)
 - MB991824: Vehicles Communication Interface (V.C.I.)
 - MB991827: M.U.T.-III USB Cable
 - MB991910: M.U.T.-III Main Harness A (Vehicles with CAN communication system)

1. Raise the vehicle using a jack and support the specified points with a rigid rack.
2. Turn off the ignition switch.

Outlander:

REMOVAL/REPLACEMENT OF REAR BRAKE PAD OR REAR BRAKE CALIPER

Description

CAUTION
When performing the following operations, always use M.U.T.-III SE for performing "START BRAKE PAD REPLACEMENT"/"FINISH BRAKE PAD REPLACEMENT"/"INITIALIZATION POSITION ADJUSTMENT" or "Learning" (in "Special function"), refer to [JIS1100000000](#).

Required ... not required

Procedure	Required
START BRAKE PAD REPLACEMENT	Required
FINISH BRAKE PAD REPLACEMENT	Required
INITIALIZATION POSITION ADJUSTMENT	Required
Removing/installing ABS actuator and electric unit (control unit)	---
Replacing ABS actuator and electric unit (control unit)	---
Removing/installing rear brake pad (When not pressing piston of rear brake caliper assembly)	---
Removing/installing rear brake pad (When pressing piston of rear brake caliper assembly)	X
Replacing rear brake pad	X
Removing/installing rear brake caliper assembly	---
Replacing rear brake caliper assembly	X
Removing/installing parking brake switch	---
Replacing parking brake switch	---

Work Procedure

1. BEFORE REMOVAL/REPLACEMENT OF REAR BRAKE PAD OR REAR CALIPER ASSEMBLY

① With M.U.T.-III SE

1. Ignition switch OFF (Auto ACC function OFF) to ON

CAUTION
Never start the engine.

2. Select "ABS", "Learning" (in "Special function"), and "START BRAKE PAD REPLACEMENT" according to this order.

CAUTION

- Never operate the parking brake switch.
- Never depress the brake pedal.

3. Touch "OK".

>>
[GO TO 2](#)

2. REMOVAL AND INSTALLATION/REPLACEMENT OF REAR BRAKE PAD OR REAR BRAKE CALIPER ASSEMBLY

Replace the rear brake pad or rear brake caliper:

- Rear brake pad: Refer to [Removal and Installation](#)
- Rear brake caliper assembly: Refer to [Removal and Installation](#)



TECHNICAL INFORMATION: ADAS 2 CONTROL/MULTI AROUND MONITOR

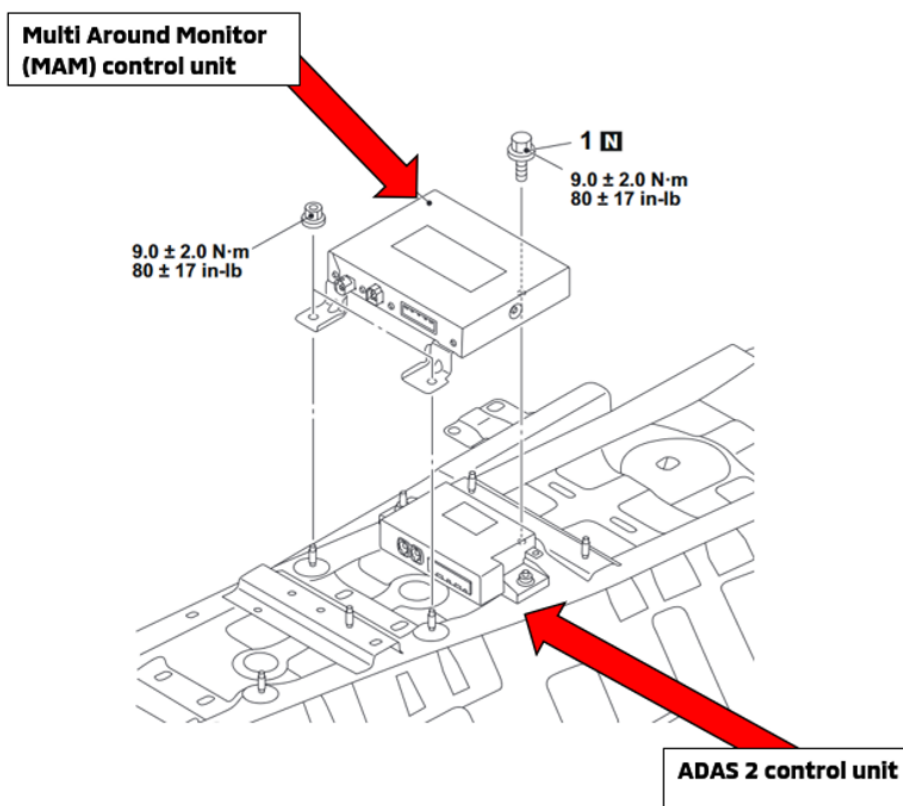
AFFECTED VEHICLES:

2022-2025 Outlander

GROUP: 54

MMNA is aware of situations where the ADAS 2 Control Unit was misidentified as the Multi Around Monitor (MAS) Control Unit.

The graphic below shows the location and identifies both control units in question. Be sure to refer to the graphic to ensure the correct control unit is ordered when replacing either of the units.



TECHNICAL INFORMATION: TECHLINE TIPS WHEN SUBMITTING REDUCED EV RANGE COMPLAINTS

AFFECTED VEHICLES:

2018-2022 Outlander Plug-in Hybrid

GROUP: 54

When performing Cell Smoothing and Auto Capacity measurement for reduced EV range complaints, before uploading data to Techline, refer to the steps below to streamline the process.

- Perform Cell Smoothing (54Dc-271) & Auto Capacity measurement (54Dc-280).
- Make sure the lithium-ion drive battery is fully charged.
- Take a quick look at the BMU data before capturing to upload for review.
- Verify the current mileage is shown one of the lines 412-420. If it is not, the Auto Capacity Measurement has not been completed.

412	Auto capa.	97323.4 mile
421	Auto capa.	0 mile
413	Auto capa.	67251.1 mile
414	Auto capa.	0 mile
415	Auto capa.	0 mile
416	Auto capa.	0 mile
417	Auto capa.	0 mile
418	Auto capa.	0 mile
419	Auto capa.	0 mile
420	Auto capa.	0 mile

- Next, verify line 30, shows average cell voltage above 4.08V. If it is not, the battery is not fully charged. Although sometimes, if it does show fully charged on the meter and your AVG. cell voltage is not correct, you can check lines 1&2 to verify. If the meter shows full but the Charge State (Control) does not, there is a reset in the BMU in special functions that needs to be performed (See section 54Dc page 266) in the Service Manual.

30	Average cell voltage	4.085 V
1	Charge state(Control)	100.5 %
2	Charge state(Display)	100 %

- Lastly, we need to make sure that lines 393&396 reflect the production date of the vehicle, unless the battery has been previously replaced (check Super Screen). If it does not match production date plus one month, you will need to perform manual BMU writing procedure. See Group 00 for further assistance.

396	Stop time back up	87 month
393	Sum total time back up	87 month





TSB/TIN/ATIN/SC/SRREVIEW

Since Tech Talk 283, the following bulletins have been published:

PUBLISH DATE	TSB/ATIN/TIN #	SUBJECT	MODELS
11/5/2024	TSB-23-33-002REV2	STRUT BEARING NOISE - REVISED	2022-2024 OUTLANDER
11/15/2024	TSB-22-55-002REV4	A/C UNINTENTIONALLY TURNS OFF, REMAINS OFF OR THE TEMPERATURE SETTING CHANGES - REVISED	2022-2024 AND 2023-2024 OUTLANDER PLUG-IN HYBRID
	TIN-24-00-009	WARRANTY PARTS STORAGE TIME - REMINDER	ALL
	TIN-24-00-010	MAINTENANCE ON MITSUBISHI MOTORS CORPORATION SERVERS	ALL
12/6/2024	TSB-24-55-002	A/C VENT TEMPERATURE INCREASES FOR SEVERAL SECONDS WHEN USING BRAKE PEDAL FOR DECELERATION	2022-2024 OUTLANDER
12/9/2024	SC-24-002	VEHICLE MAY NOT GO INTO READY MODE IN EXTREME COLD TEMPERATURES - CUSTOMER SATISFACTION CAMPAIGN	CERTAIN 2023 AND 2024 OUTLANDER PLUG-IN HYBRID VEHICLES
	TIN-24-5C-002	VEHICLE MAY NOT GO INTO READY MODE IN EXTREME COLD TEMPERATURES - CUSTOMER SATISFACTION CAMPAIGN	CERTAIN 2023 AND 2024 OUTLANDER PLUG-IN HYBRID VEHICLES
	TIN-24-00-011	SOCIAL MEDIA CAMPAIGN - TAKATA RECALLS	CERTAIN 2004-2007 LANCER, 2006-2009 RAIDER, AND 2012-2017 I-MIEV
12/16/2024	TSB-23-55-002REV	COOL AIR EXPELLED WHEN A/C SWITCH IS TURNED OFF WHILE IN ECO DRIVE MODE - REVISED	CERTAIN 2022-2023 OUTLANDER
	TSB-24-55-003	A/C TIMER INOPERABLE WHEN OUTSIDE/COOLANT TEMPERATURE IS LOW	2023-2024 OUTLANDER PLUG-IN HYBRID
12/20/2024	TIN-24-42-001	DRIP RAIL MOULDING WARRANTY CLAIM INSTRUCTIONS	2022-2025 ECLIPSE CROSS

IMPORTANT

Affected new or used vehicle inventory must be repaired before the vehicle is sold or delivered. Dealers must check their vehicle inventory VINs on the Warranty Superscreen to verify whether the vehicle is involved in a recall campaign.

It is a violation of Federal Law for a dealer to sell or deliver a new motor vehicle or any new / used motor vehicle equipment (including a tire) covered by the notification under a sale or lease until the defect or non-compliance is remedied.





TECHNICAL TRAINING COURSE SCHEDULE

Atlanta Technical Training Center - Southeast Region
 801 Interstate West Parkway, Lithia Spring, GA 30122
 (770) 732-3000 Airport: Atlanta (ATL)

February '25				
Monday	Tuesday	Wednesday	Thursday	Friday
3	4	5	6	7
	EECS	EECS	EECS	EECS
10	11	12	13	14
	ADAS	ADAS		CVT V-ILT
17	18	19	20	21
		ER1	ER1	ER1
24	25	26	27	28
	PHEVG2TT V-ILT	PHEVG2TT V-ILT	PHEVG2TT V-ILT	PHEVG2TT V-ILT
3	4	5	6	7

March '25				
Monday	Tuesday	Wednesday	Thursday	Friday
3	4	5	6	7
10	11	12	13	14
	BCS	BCS	BCS	BCS
17	18	19	20	21
	MED4	STV4	EL1	EL1
24	25	26	27	28
	CES	CES	BCS	BCS
31	1	2	3	4
	SMI F2F	ER1	ER1	ER1

New Jersey Technical Training Center - Northeast Region
 516 Heron Drive, Swedesboro NJ 08085
 (856) 467-7100 Airport: Philadelphia (PHL)

February '25				
Monday	Tuesday	Wednesday	Thursday	Friday
3	4	5	6	7
10	11	12	13	14
17	18	19	20	21
24	25	26	27	28
3	4	5	6	7

March '25				
Monday	Tuesday	Wednesday	Thursday	Friday
3	4	5	6	7
10	11	12	13	14
	BCS	BCS	BCS	BCS
17	18	19	20	21
	CVT F2F	ER1	ER1	ER1
24	25	26	27	28
	ADAS	ADAS	CC1	CC1
31	1	2	3	4
	PHEVG2TT V-ILT	PHEVG2TT V-ILT	PHEVG2TT V-ILT	PHEVG2TT V-ILT

Franklin Technical Training Center
 1552 Columbia Avenue, Franklin TN 37064
 (657) 238-2891 Airport: Nashville (BNA)

February '25				
Monday	Tuesday	Wednesday	Thursday	Friday
3	4	5	6	7
10	11	12	13	14
	MED4	STV4	EL1	EL1
17	18	19	20	21
24	25	26	27	28
3	4	5	6	7

March '25				
Monday	Tuesday	Wednesday	Thursday	Friday
3	4	5	6	7
10	11	12	13	14
17	18	19	20	21
24	25	26	27	28
	MED4	STV4	EL1	EL1
31	1	2	3	4

Course Title	Days	Code	Prerequisites
Engine & Emission Control Systems (ILT)	4	EECS	ES1W, EL1, STV4, MED4, ME3W
Engine Repair (ILT)	3	ER1	ES1W, EL1, STV4, MED4, ME3W
Climate Control (ILT)	2	CC1	ES1W, EL1, STV4, MED4, ME3W
Plug-In Hybrid Electric Vehicle (Virtual)	2	PHEVG2TT	EL1, STV4, MED4, DGPHEVWT
MED4 (Virtual)	1	MED4	ME3W
STV4 (Virtual)	1	STV4	No Prerequisites
Electrical Systems 1 (Virtual)	2	EL1	ES1W
Advanced Driver Assistance Systems (ILT)	2	ADAS21TT	ES1W, EL1, STV4, MED4, ME3W
Chassis Electrical Systems	2	CES22TT	EL1, STV4, MED4, ME3W, ES1W
CVT OVERHAUL PROCEDURES (Virtual) or (F2F)	1	CVT	STV4, MED4, EL1, AFW
Brake Control System	2	BCS	MED4, STV4, EL1
Service Manual Introduction (Virtual) or (F2F)	1	SMI	MED4, STV4, EL1

Classes shaded in Green are (V-ILT) Virtual instructor Led Training

MMNA technical on site training is not shaded

CVT Overhaul Procedures will be offered in two training formats.

1. CVT V-ILT online instructor-led.
2. CVT F2F in center training.



FOR IMMEDIATE RELEASE



SiriusXM with 360L to Make Mitsubishi Motors Debut in 2025

SiriusXM and Mitsubishi Motors extend agreement through 2030

NEW YORK and FRANKLIN, Tenn. – January 8, 2025 – SiriusXM and Mitsubishi Motors North America, Inc. (MMNA) today announced an agreement to launch SiriusXM with 360L on select 2025 model-year Mitsubishi vehicles, including the recently debuted new Outlander SUV, as part of an extension of the agreement that will continue the two companies' relationship through 2030.

SiriusXM with 360L combines satellite and streaming content delivery into a single, cohesive in-vehicle entertainment experience, which provides drivers and their passengers with choice, content discovery, and a personalized listening experience. In equipped Mitsubishi vehicles, SiriusXM with 360L adds an expansive library of on-demand content as well as a live sports category that makes it easier to find broadcasts of games and sporting events. Personalized "For You" recommendations, with the ability to access related content, allow listeners to discover more of the programming they love, and new features from SiriusXM are expected to be delivered by over-the-air updates to Mitsubishi in the future.

"The excitement of being behind the wheel of a Mitsubishi vehicle is only made better when SiriusXM is playing through the sound system," said Bryan Arnett, MMNA's Director of Digital Product Strategy. "The addition of SiriusXM with 360L adds another level to raise the entire in-car experience."

"SiriusXM with 360L provides drivers even more of the SiriusXM content they love in an enhanced and personalized listening experience, and we are excited for 360L to make its Mitsubishi Motors debut in 2025," said Gail Berger, Senior Vice President and General Manager of Automotive Partnerships, SiriusXM. "We look forward to delivering SiriusXM with 360L across even more of Mitsubishi's model lineup in future model years during our extended agreement."

Newly purchased or leased Mitsubishi Motors vehicles equipped with SiriusXM in the United States receive a three-month trial subscription¹ to SiriusXM that delivers SiriusXM's full lineup of content, plus access at home and on the go through the SiriusXM app on connected devices and speakers.

¹ After the three-month trial subscription, all SiriusXM services require the purchase of a subscription that is sold separately. SiriusXM services automatically stops at the end of such trial subscription unless a subscription plan is purchased.

SiriusXM is home to hundreds of expertly-curated, ad-free music channels across all genres, decades, and moods as well as the must-hear moments in sports, news, entertainment, comedy, and more. From one-of-a-kind channels by some of the world's top musicians to first-listens and exclusive performances from emerging artists and bands, SiriusXM presents the perfect soundtrack for any moment. SiriusXM brings fans closer to their favorite sport by offering the most extensive lineup of live pro and college events, plus programming that delivers reactions and analysis from experts and insiders. Subscribers also stay informed and entertained with the latest in news and politics, entertainment, comedy, and beyond with celebrity interviews, iconic hosts, trusted opinions, non-stop laughs, and so much more, available only on SiriusXM.

For more information on all the programming that SiriusXM offers, and all the ways subscribers can listen, visit [SiriusXM.com](https://www.siriusxm.com).