



# Technical Service Bulletin

SUBJECT: <b>CHECK ENGINE LIGHT ILLUMINATES OR ENGINE MALFUNCTION POWER REDUCED SERVICE NOW WARNING MESSAGE APPEARS WHILE IDLING OR DRIVING - REVISED</b>		NO: <b>TSB-22-13-001REV</b>
		DATE: <b>January 2025</b>
		MODEL: <b>Outlander</b>
<b>CIRCULATE TO:</b>	<input type="checkbox"/> GENERAL MANAGER	<input checked="" type="checkbox"/> PARTS MANAGER
<input checked="" type="checkbox"/> SERVICE ADVISOR	<input checked="" type="checkbox"/> SERVICE MANAGER	<input checked="" type="checkbox"/> WARRANTY PROCESSOR
		<input checked="" type="checkbox"/> TECHNICIAN
		<input type="checkbox"/> SALES MANAGER

*This bulletin supersedes TSB-22-13-001 dated January 2022 to update the affected vehicles and work procedures. Revisions are italicized and indicated by ◀ .*

## PURPOSE

This reflash is to correct the Engine Control Unit (ECU) software. The check engine light may illuminate or an engine malfunction power reduced service now warning may appear while idling or driving. DTC P0401, P0404 or others may be set. Please perform this reflash first, then proceed to diagnosing other codes if they persist.

Please reprogram the ECU with countermeasure software to correct the issue for any affected vehicles that come in for service (with customer approval) and any in dealer inventory.

## AFFECTED VEHICLES

*2022-2024 Outlander (VIN Cut-off JA4J4VA87RZ085951/Effective July 29, 2024)*

NOTE: If an affected vehicle has a Malfunction Indicator Lamp (MIL) illuminated before

reprogramming, and DTCs are listed in the ECU memory, save the ALL-DTC results and then erase the codes prior to reprogramming. If hard codes are present that are applicable to the target ECU and won't clear, diagnose and repair these codes first and then proceed with reprogramming.

### **IMPORTANT**

To maximize customer satisfaction with the quality of their vehicle, affected new or used inventory vehicles should be remedied before the vehicle is delivered.

Copyright 2025, Mitsubishi Motors North America, Inc.

The information contained in this bulletin is subject to change. For the latest version of this document, go to the Mitsubishi Dealer Link, MEDIC, or the Mitsubishi Service Information website ([www.mitsubishitechinfo.com](http://www.mitsubishitechinfo.com)).

## WORK PROCEDURE

*Reprogram the Engine ECU with the applicable software found on page 3 of this bulletin.*



### **CAUTION**

- Turn off all electrical devices to minimize the vehicle's electrical load. Also use an external power source to ensure that the vehicle auxiliary battery maintains the specified voltage during reprogramming. Low voltage of the auxiliary battery may cause incomplete reprogramming, and damage the ECU.
- Write down all the customer's electrical device settings such as A/C and radio before reprogramming and restore them after reprogramming.
- Connect the MUT-3 to an AC power source to prevent internal battery discharge.
- Before using, make sure the USB cable and MUT-3 main harness are not damaged.
- Do not perform maintenance work in the engine during reprogramming. If the connection between the engine ECU and ETACS is lost, the cooling fan operates as fail-safe.
- Check the "All DTC" after reprogramming and erase them (if any).

Reprogramming Chart

Part Name	Target HW Part No.	Reprogramming SW file name	New SW No. / Ver.	Target SW No. / Ver.	Remarks
Engine Control Unit	237036RA3A	237616VN.4BN	237616VN4B	237614PN4C	22MY 2WD CRUISE CONTROL
				237614PN4D	
				237614PN4E	
				237616VN4A	
		237616VN.0BN	237616VN0B	237614PNOG	22MY 2WD ADAPTIVE CRUISE CONTROL
				237614PN0D	
				237614PNOE	
				237616VNOA	
		237616VN.1BN	237616VN1B	237614PN1C	22MY 2WD ADAPTIVE CRUISE CONTROL
				237614PN1D	
				237614PN1E	
				237616VN1A	
	237616VM.4CN	237616VM4C	237616VM4A	23MY 2WD CRUISE CONTROL	
			237616VM4B		
	237616VM.5CN	237616VM5C	237616VM5A	23MY 2WD ADAPTIVE CRUISE CONTROL	
			237616VM5B		
	237616VM.6CN	237616VM6C	237616VM6A	23MY 2WD ADAPTIVE CRUISE CONTROL	
			237616VM6B		
	237034PM2A	237616VN.5BN	237616VN5B	237614PN5C	22MY 4WD CRUISE CONTROL
				237614PN5D	
				237614PN5E	
				237616VN5A	
		237616VN.2BN	237616VN2B	237614PN2C	22MY 4WD ADAPTIVE CRUISE CONTROL
				237614PN2D	
				237614PN2E	
				237616VN2A	
		237616VN.3BN	237616VN3B	237614PN3C	22MY 4WD ADAPTIVE CRUISE CONTROL
				237614PN3D	
				237614PN3E	
				237616VN3A	
		237616VM.7CN	237616VM7C	237616VM7A	23MY 4WD CRUISE CONTROL
				237616VM7B	
237616VM.8CN		237616VM8C	237616VM8A	23MY 4WD ADAPTIVE CRUISE CONTROL	
			237616VM8B		
237616VM.9CN		237616VM9C	237616VM9A	23MY 4WD ADAPTIVE CRUISE CONTROL	
			237616VM9B		
237036RA5A	237616VL.8CN	237616VL8C	237616VL8B	24MY 2WD CRUISE CONTROL	
	237616VL.9CN	237616VL9C	237616VL9B	24MY 2WD ADAPTIVE CRUISE CONTROL	
	237616VN.6CN	237616VN6C	237616VN6B	24MY 2WD ADAPTIVE CRUISE CONTROL	
	237616VN.7CN	237616VN7C	237616VN7B	24MY 4WD CRUISE CONTROL	
	237616VN.8CN	237616VN8C	237616VN8B	24MY 4WD ADAPTIVE CRUISE CONTROL	
	237616VN.9CN	237616VN9C	237616VN9B	24MY 4WD ADAPTIVE CRUISE CONTROL	

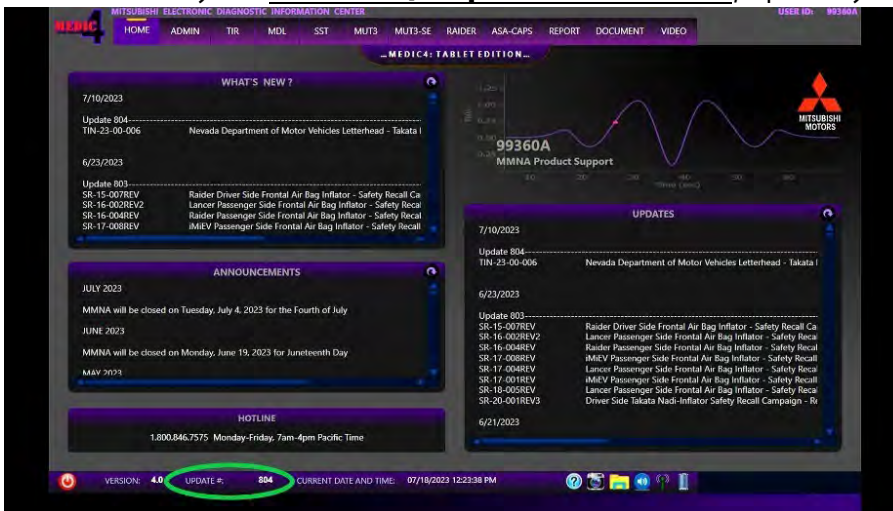
## SOFTWARE/MEDIC VERSION VERIFICATION PROCEDURE

1. Verify that the Engine-ECU has not already been updated to the latest S/W number in the chart above. If the ECU software is at the latest level, reprogramming is not necessary.

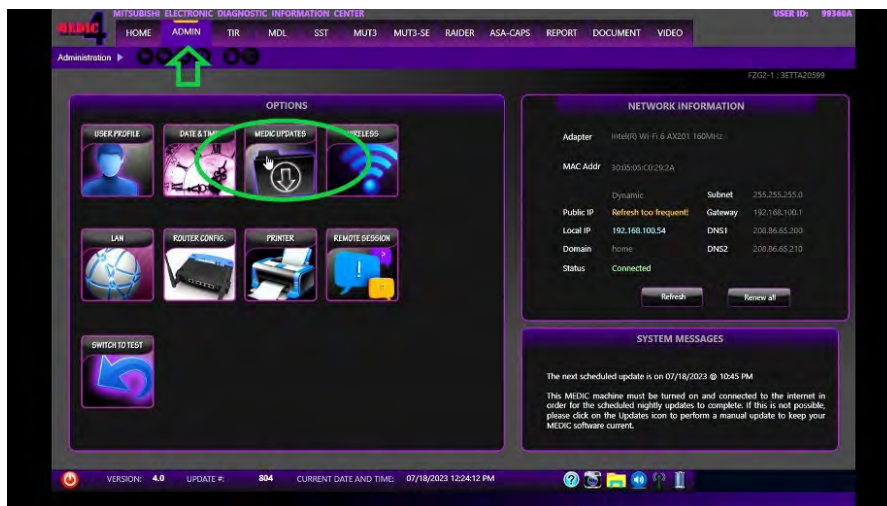
**NOTE:** Reprogramming the Engine-ECU with the latest database (e.g., **N240801NR**) includes all past and current reprogramming for TSBs of affected vehicles. It is not necessary to reprogram the ECU for each previous TSB.

### **For MEDIC 3.5/4 users only: (MUT-3 SEV users go to step 5)**

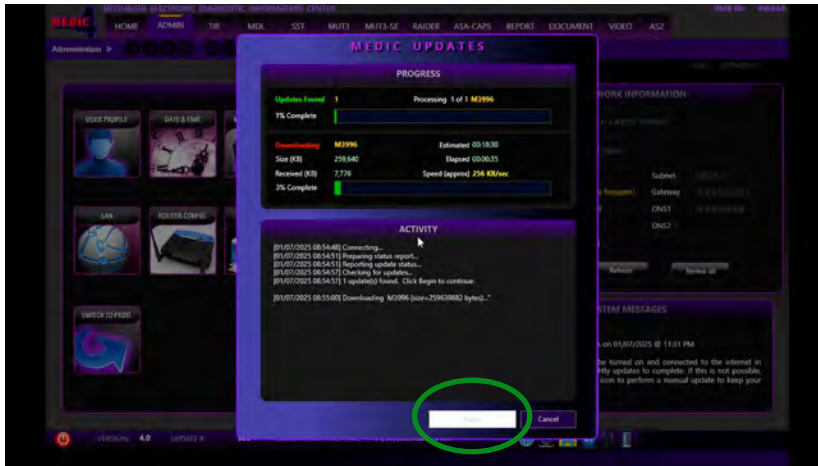
2. Verify the MEDIC 3.5/4 is at version 3.5 and at update **899** or higher.  
If your **MEDIC 3.5/4 update is at least 899**, continue with the Reprogramming Procedure. If your **MEDIC 3.5/4 update is below 899**, update your MEDIC as



3. Select the MEDIC 3.5/4 Admin tab and click on "Updates".



4. If the MEDIC update screen advises updates are available, click the "Begin" button. After all updates are complete, **GO TO THE REPROGRAMMING PROCEDURE.**

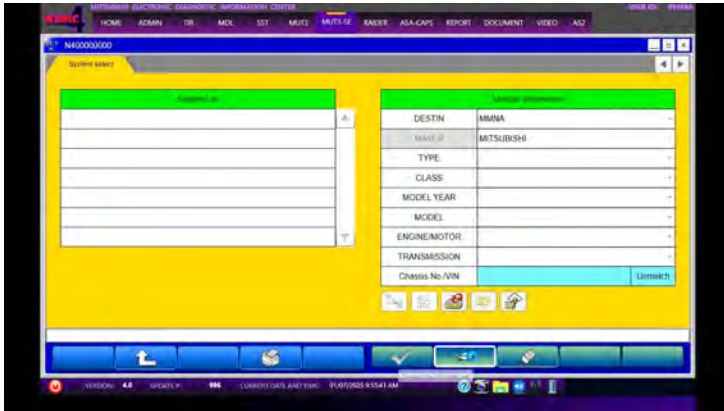


5. STANDALONE MUT-3 SE SCAN TOOL VIEWER (STV) ONLY: (MEDIC 3.5 USERS – GO TO THE REPROGRAMMING PROCEDURE). Verify that your MUT-3 SE has the most current version of the reprogramming database from the MUT-3 SE Main Page.

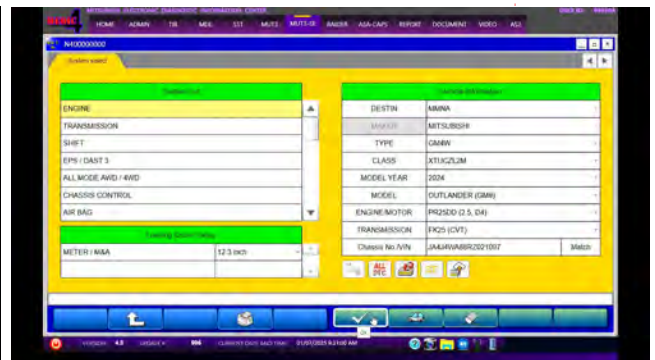
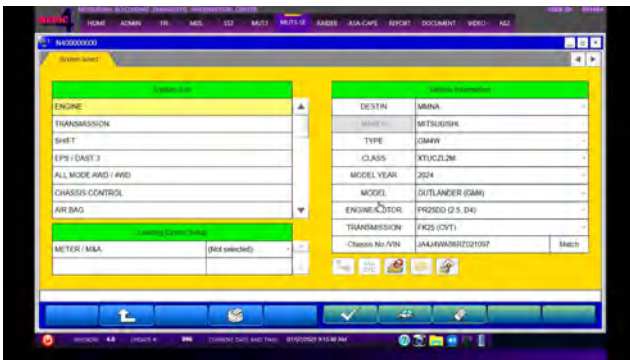
- a. Press the STV button.



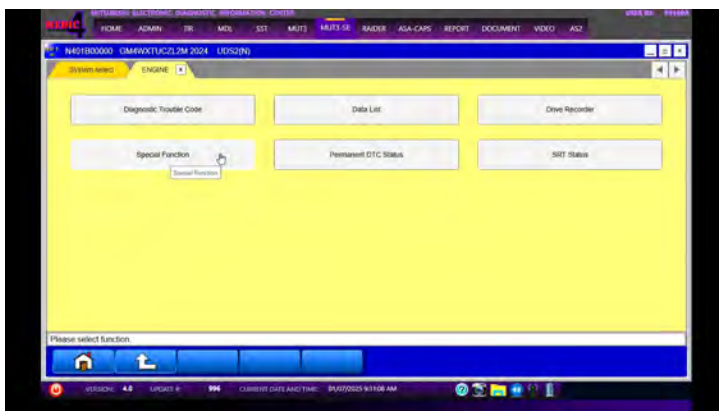
b. Press the "car icon" for Chassis No/VIN read out.



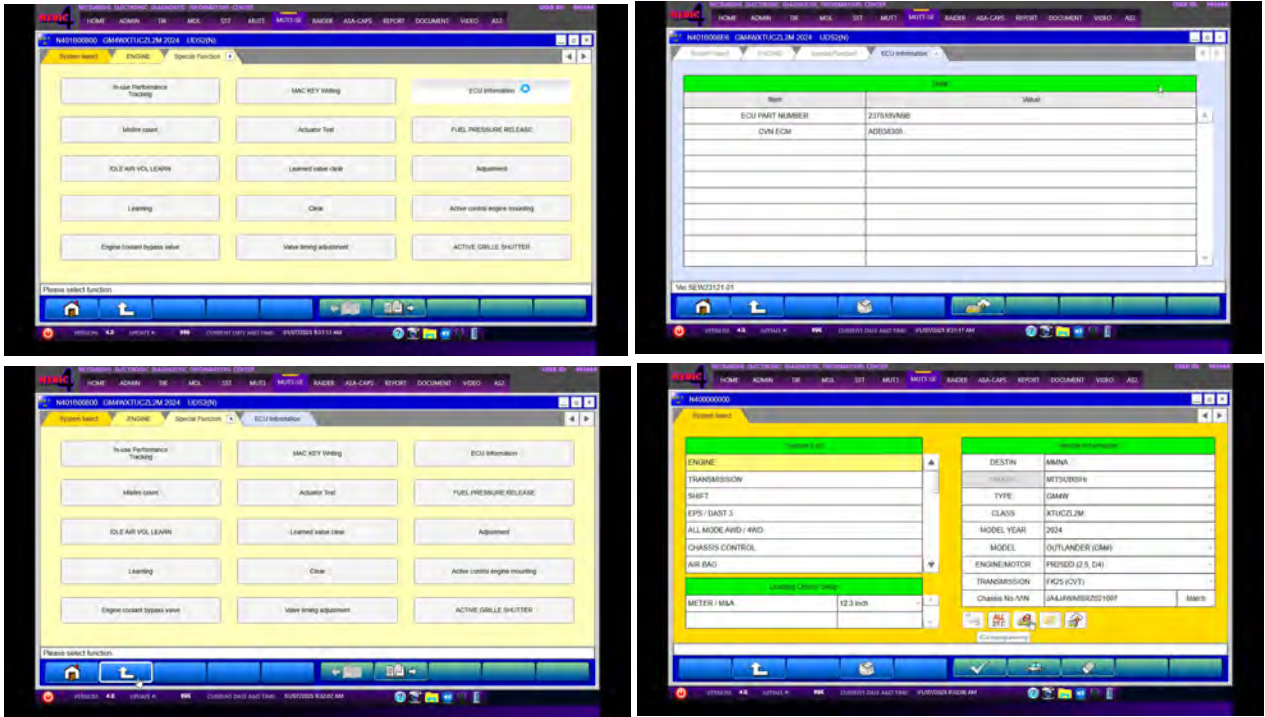
c. Confirm the vehicle information displayed is complete/correct, after selecting the appropriate class and Meter/M&A (class can be found on the B pillar). Press the "OK" button.



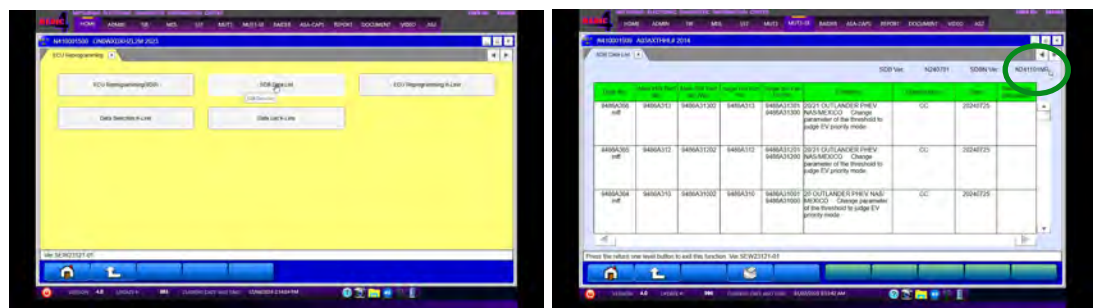
d. Press the Special Function button.



- e. Press the ECU Information button and verify the information according to the chart in this bulletin. Next, press the "arrow" to return to the System Select screen and press the "ECU reprogramming" button.



- f. Press the "SDB Data List button", verify software information according to the chart in this bulletin and the SBDN Version number at the top right (see below).
- If the database number displayed on your MUT-3 SE is **N240801NR** or greater, continue to the next section.
  - If the reprogramming database number displayed on your MUT-3 SE is lower than **N240801NR**, then the MUT-3 SE database needs to be updated.
  - Once the database number is confirmed, press the Home button to go back to the System Select screen.



## REPROGRAMMING PROCEDURE

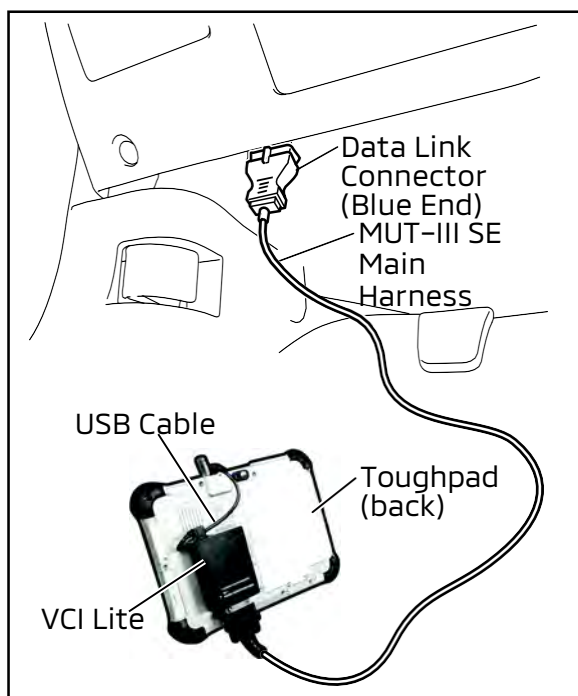


To ensure that the vehicle battery maintains 12V during the procedure, connect a battery charger to the vehicle during the procedure.

**NOTE: VCI Stand-alone reprogramming is not available for this procedure. The laptop/tablet and the VCI must remain connected for the entire procedure.**

1. Connect the equipment as follows:

**NOTE:** VCI Lite and MEDIC 4.0 Toughpad shown for illustration purposes only.



- Turn the MEDIC PC/tablet on. If the battery indicator in the lower right hand corner of the screen does not show a full charge, it is recommended that either the battery be charged prior to beginning or the tablet should be used with the A/C power adaptor connected.
- Connect the USB cable to the VCI/VCI Lite. When the laptop/tablet displays the MUT-III SE main screen, connect the USB cable to the device.
- Connect the MUT-3 SE main harness with the blue DLC connection to the VCI/VCI Lite. Connect the blue connection of the MUT-3 SE main harness to the vehicle's data link connector.
- For VCI only (p/n MB991824): Turn the VCI power switch ON. Verify that the indicator lamp in the upper right corner of the screen is green.



**DO NOT DISTURB THE HARNESS CABLES OR CONNECTIONS DURING THE REPROGRAMMING PROCESS AS IT COULD CAUSE THE CONTROL UNIT TO LOSE DATA. IF THE USB CABLE IS DISCONNECTED DURING THIS PROCEDURE, A WARNING MESSAGE WILL DISPLAY.**

**NOTE:** Due to limited space in the engine compartment it may be easiest to connect battery charger cable onto ground point.

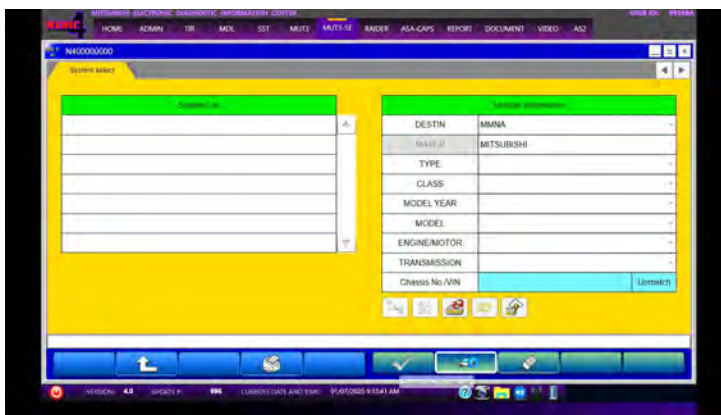
2. Place the push-button switch in the "ON" position.



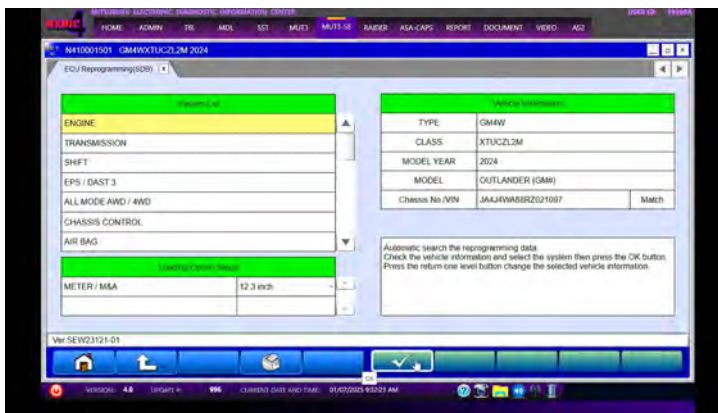
3. Turn on flashers to prevent vehicle from shutting/powering down.
4. Press the "STV" button.



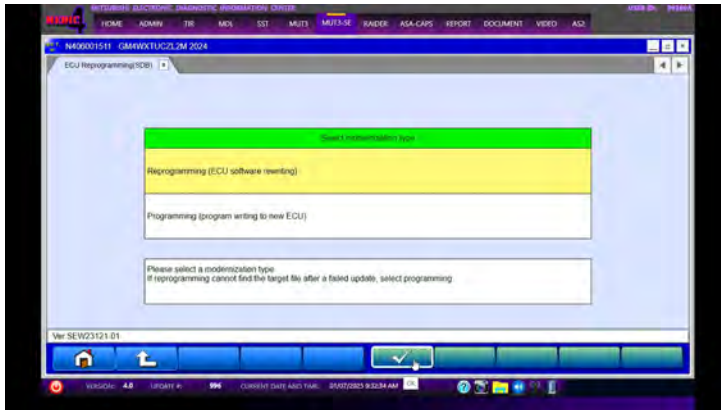
- a. Press the "car icon" for Chassis No/VIN read out.



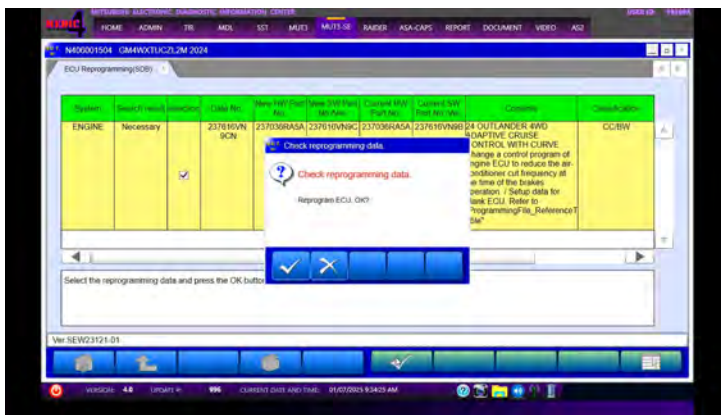
- b. Confirm the vehicle information displayed is complete/correct, after selecting the appropriate class and Meter/M&A. The class can be found on the B pillar. Next select "Engine" in the System List and press the "OK" button.



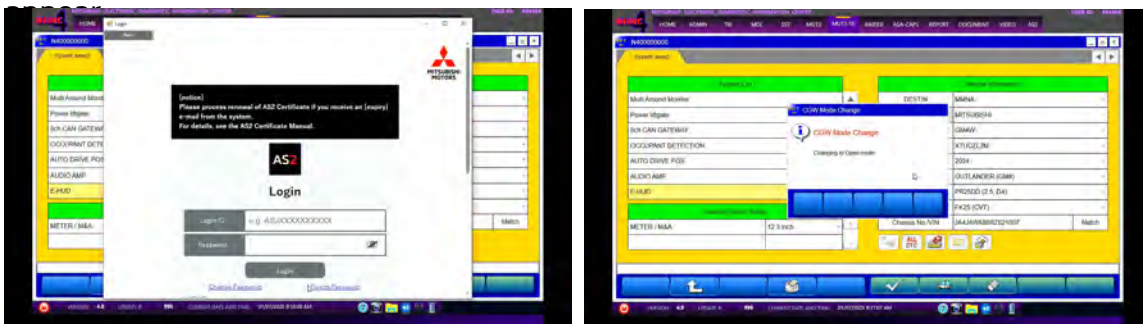
- c. Select "Reprogramming (ECU software rewriting)" for the modernization type and press the "OK" button.



- d. Click in the selection box and press the "OK" button.



- e. Log into AS2. CGW Mode Change pop up will



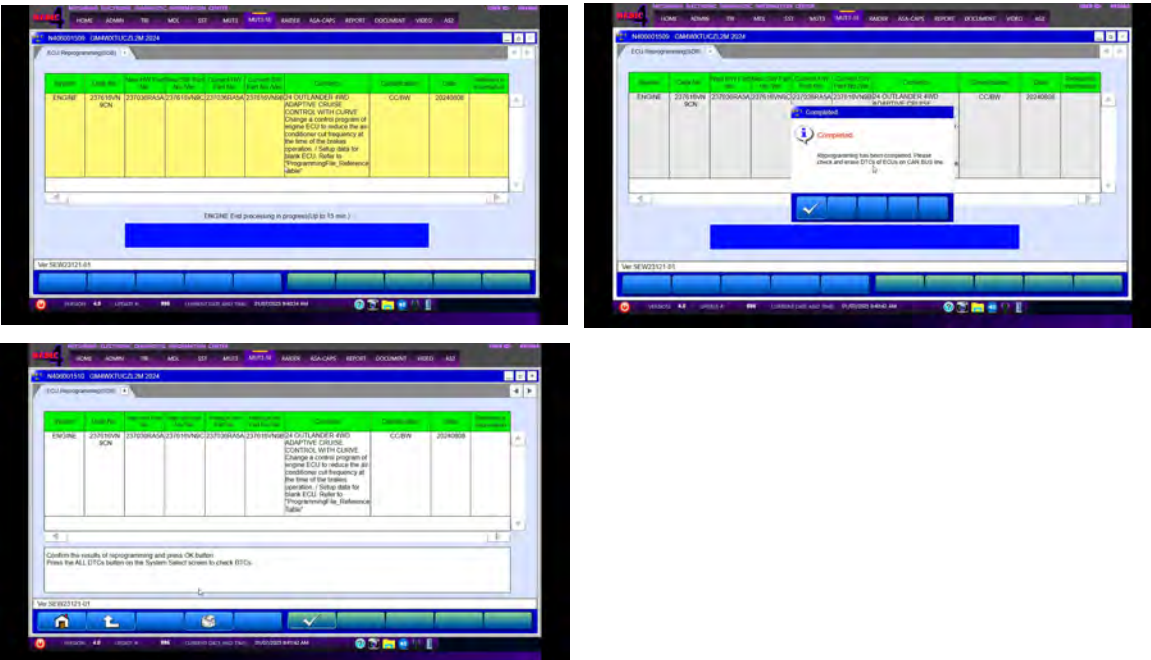
**CAUTION**

**DO NOT DISTURB THE HARNESS CABLES OR CONNECTIONS DURING THE REPROGRAMMING PROCESS AS IT COULD CAUSE THE CONTROL UNIT TO LOSE DATA. IF THE USB CABLE IS DISCONNECTED DURING THIS PROCEDURE, A WARNING MESSAGE WILL DISPLAY.**

f. Allow up to 15 minutes for processing and reprogramming.

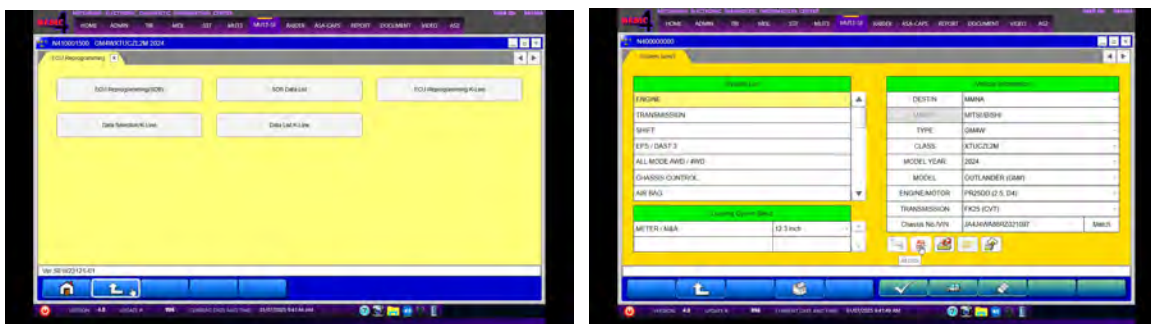


g. Allow end processing to complete. Confirm the results and press the "OK" button.

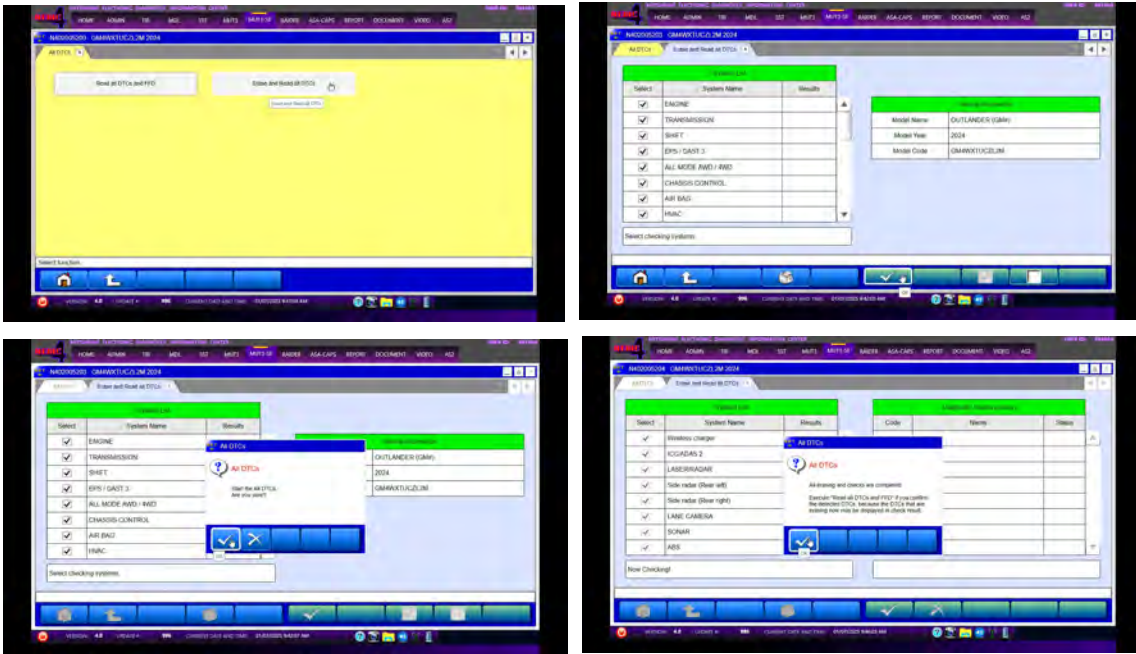


h. Turn the ignition switch to the "OFF" position for 10 seconds. Then turn the ignition switch back to the "ON" position.

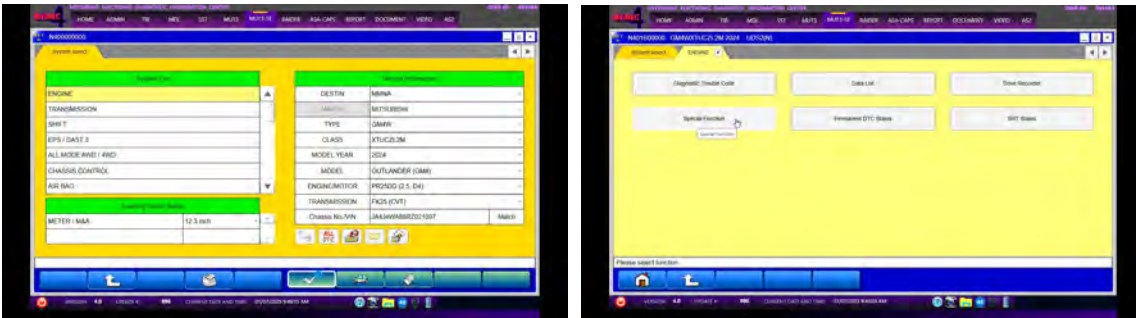
i. Press the "arrow" button to return to the System Select screen and press the "All DTCs" button.



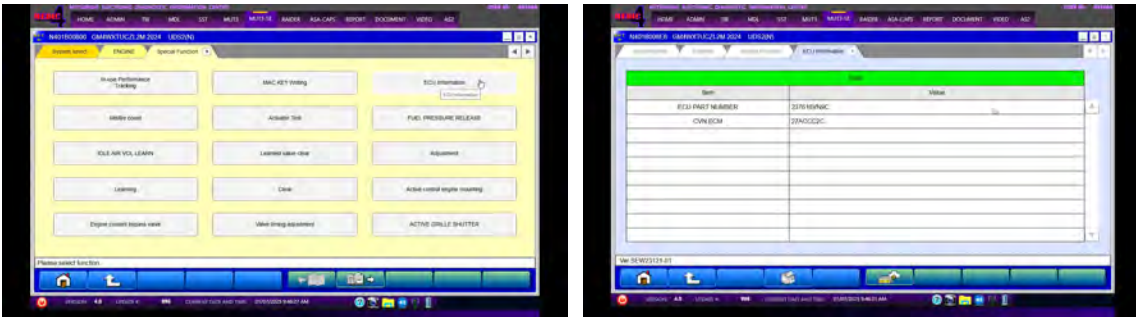
j. Press the "Erase and Read all DTCs" button. Press the "OK" button when prompted.




k. Press the "arrow" button, then press the "Special Function" button.



l. Press the "ECU Information" button and confirm the ECU part number.



- Using a ball-point pen, enter the appropriate ECU part number, Software Part Number (ROM ID#), this Technical Service Bulletin number, your dealer code, and the current date on the Engine Compartment/Control Module Label (p/n MSSF024G00). The Vendor Code is not applicable. The label is available from your facing PDC.

		<b>AUTHORIZED MODIFICATIONS</b>		These Modifications Have Been Approved as Appropriate by EPA and NHTSA	
<b>THE FOLLOWING MODIFICATIONS HAVE BEEN MADE:</b>					
PART NUMBER 1860DXXX		VENDOR CODE N/A		ROM ID # ENG 1860C2XXXX	
TSB ENG TSB-20-13-XXX		A/T		DATE 06/25/20	
A/T		DEALER CODE 99332		DATE 06/25/20	
<i>Engine Compartment Label</i>			<i>Control Module Label</i>		

- Test drive the vehicle to confirm proper operation and restore all customer presets if necessary.

## WARRANTY

This bulletin is supplied as technical information only and is not an authorization to repair. If an affected vehicle is reported with the described condition, diagnose the condition, repair as described in this bulletin and submit a normal warranty claim using the information below.

Operation Code	Operation	Quantity	Work Time
138501FY	Engine ECU reprogramming	1	0.3H