



PROTERRA



TECHNICAL SERVICE BULLETIN

ISSUE DATE:	9-18-2020
SERVICE BULLETIN SUBJECT:	Front Interlock Exhaust Muffler Relocation Retrofit
VINs or MODELS AFFECTED:	Service Specified Buses
COMPLETE BY:	Next Service Opportunity
SERVICE BULLETIN #:	SC-20-137
Labor Operations Code:	SH41Z

NOTICE! It is expected that this process will require 1 hour per bus. Please schedule appropriately to minimize vehicle downtime.

FRONT INTERLOCK EXHAUST MUFFLER RELOCATION RETROFIT

Retrofit Description:

This procedure relocates the front interlock exhaust muffler to more protected location for improved reliability.

Tools/Parts Required

Tools and Supplies Required:

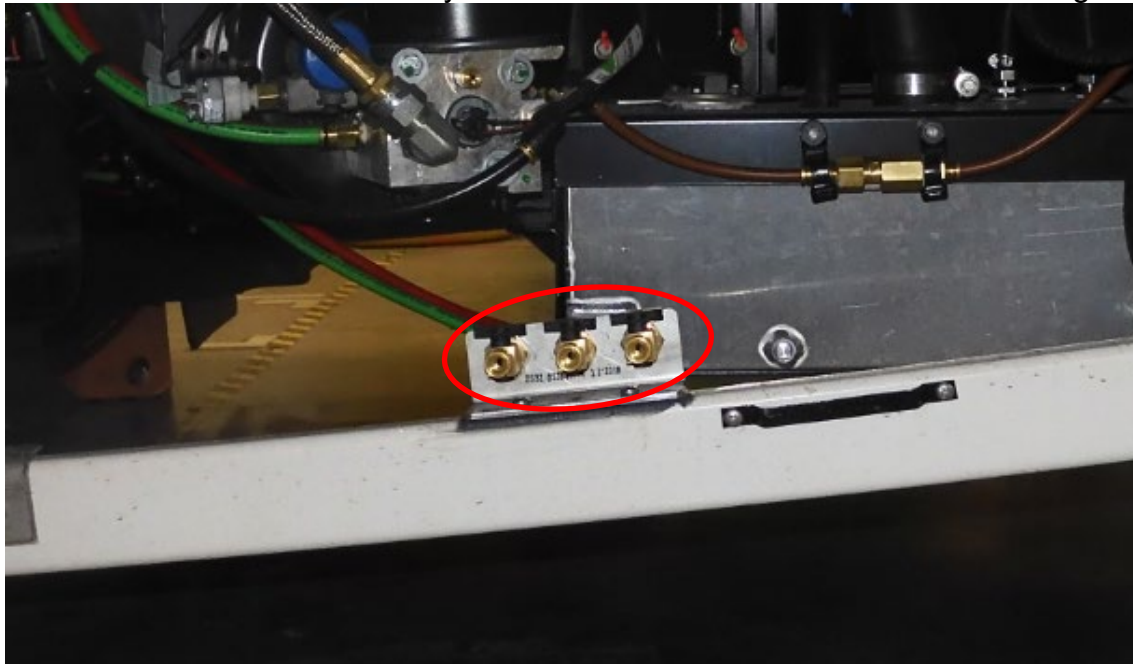
- Side Cutting Pliers
- 1-Inch Combination Wrench (2 Required)
- Loctite 567

Kit Parts Required:

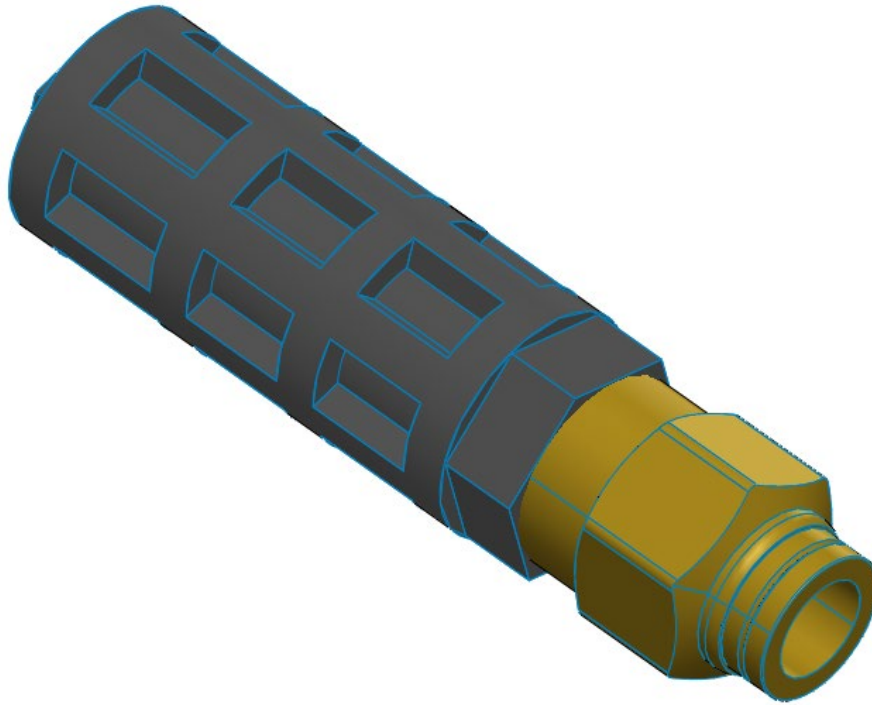
- 055485 SERVICE KIT FOR EXHAUST MUFFLER RELOCATION (Consisting of)
 - 044348 MUFFLER 1 EA
 - 048833 FITTING, PTC, BRASS, STRAIGHT, 1 1/2 FPT X 1/2 PTC 1 EA
 - 054063 FORMED AIRLINE, 1/2" OD, .06" WALL, BLACK 1 EA
 - 012138 CABLE TIE, HEAVY DUTY .5WIDE 9.1" BLACK 4 EA

Procedure

1. Complete the Proterra approved Lockout/Tagout procedure to make the bus safe for work.
2. Working in the Streetside Rear Hatch, open the three valves shown circled in red below to allow the air to drain from the system. Allow the air to drain before continuing to the next step.



3. While allowing the air to drain, install the Fitting (048833) onto the Muffler (044348) using two 1-Inch Combination Wrenches. Apply Loctite 567 to the threads of the Fitting. **Torque the Fitting 1.5 to three turns past finger tight.**

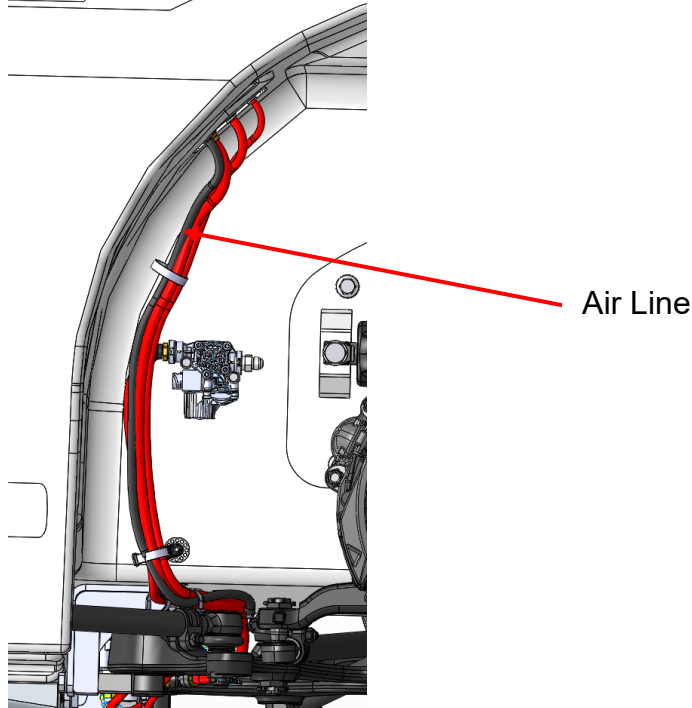


4. Working inside the Streetside Wheel Well, locate the Muffler and Black 1/2-Inch Air Line shown in the following photograph.

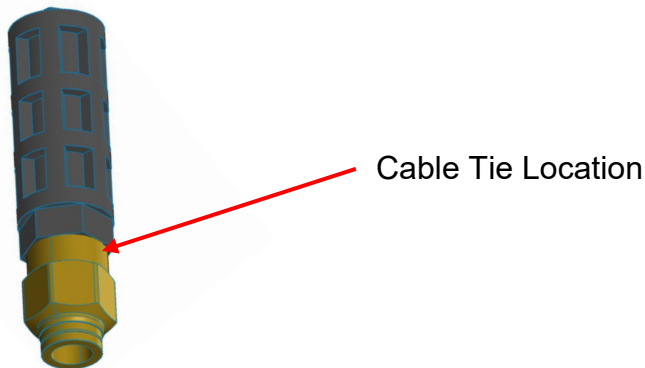


5. Remove the Air Line and Muffler and discard them. These parts will not be reused.
6. Install one end of the new Formed Airline (054063) into the pass-through fitting where the old Air Line was removed.

7. Route the free end of the Formed Airline (054063) down past the ABS Solenoid with the existing air line bundle and toward the center of the bus as shown in the following illustration.



8. Install the new Muffler (044348) and Fitting (048833) onto the end of the Formed Airline (054063).
9. Using Cable Ties (012138), neatly secure the Formed Airline (054063) and the Muffler (044348) to the existing air line bundle.
Note: The Cable Tie securing the Muffler should be installed around the Fitting (048833). It should not obstruct the openings in the Muffler.



10. Close the three air drain valves that were opened earlier.
11. Remove the Lockout/Tagout devices and return the bus to service.