



PROTERRA



TECHNICAL SERVICE BULLETIN

ISSUE DATE:	10-2-2020
SERVICE BULLETIN SUBJECT:	VIP Sensor Clamp Retrofit
VINs or MODELS AFFECTED:	Service Specified Buses
COMPLETE BY:	Next Service Opportunity
SERVICE BULLETIN #:	SC-20-140
Labor Operation Code:	WD41Z

NOTICE! It is expected that this process will require 1/2 hour per bus. Please schedule appropriately to minimize vehicle downtime.

VIP SENSOR CLAMP RETROFIT

Retrofit Description:

This procedure adds clamps to the rear door sensors for improved securement.

Tools/Parts Required

Tools and Supplies Required:

- 3/16-Inch Allen Driver
- #2 Phillips Screwdriver

Kit Parts Required:

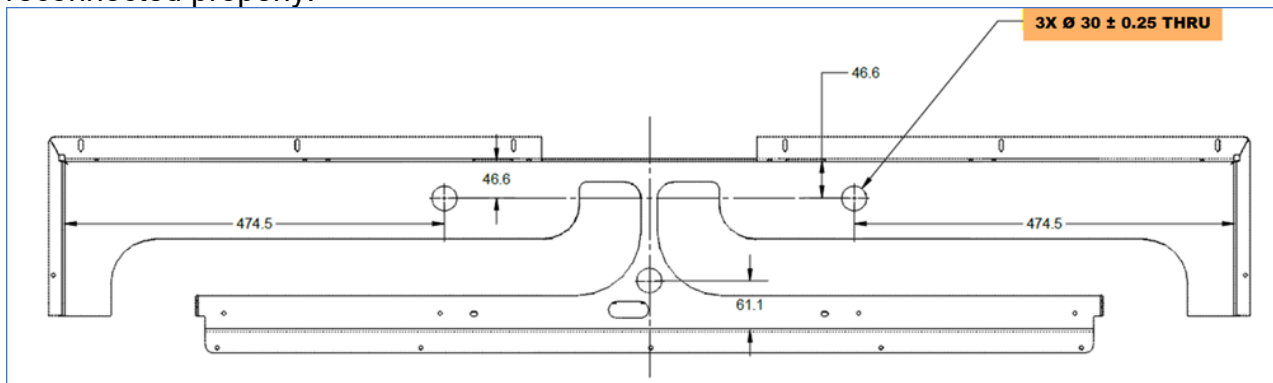
- 055585 KIT, RETROFIT, VIP SENSOR, CLAMPS (Consisting of)
 - 121-4723 CLAMP, SNAP-GRIP 3 EA

Procedure

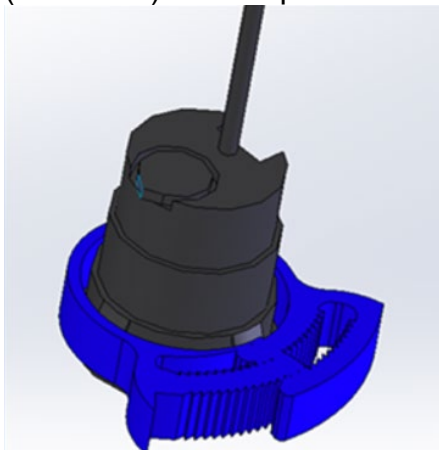
1. Complete the Proterra approved Lockout/Tagout procedure to make the bus safe for work.
2. Using a 3/16-Allen Driver, remove the Hadley Panel above the rear door.



3. Using a #2 Phillips Screwdriver, remove the rear door closeout panel that holds the VIP Sensors. Make notes or take photographs of any wiring that is disconnected so that it may be reconnected properly.



4. Using the following illustration as a guide, secure the three VIP Door sensors with Clamps (121-4723). Use Slip Joint Pliers to tightly lock the Clamps.



5. Using the notes of photographs taken earlier, reconnect the closeout panel wiring.
6. Using a #2 Phillips Screwdriver, replace the rear door closeout panel.
7. Using a 3/16-Allen Driver, replace the Hadley Panel.
8. Remove the Lockout/Tagout devices and power the bus on.
9. Return the bus to service after verifying proper operation of the rear door.