

# Service Alert

Mazda North American Operations  
Irvine, CA 92618-2922



<b>Subject:</b>  LEATHER STEERING WHEEL SURFACE WEAR/PEEL, DENTS, OR DISCOLORATION	<b>Service Alert No.:</b> SA-005/25
	<b>Last Issued :</b> 01/27/2025

## BULLETIN NOTES

This service alert supersedes the previously issued service alert(s) listed below. The changes are noted in Red text.

Previous Service Alert(s):	Date(s) Issued:
SA-060/24	8/15/24
SA-082/23	12/08/23

## APPLICABLE MODEL(S)/VINS

2025 CX-30  
2023-2025 CX-5  
2025 CX-50  
2025 CX-70  
2022-2023 CX-9  
2024-2025 CX-90  
2022-2025 Mazda3 (Japan built)  
2025 Mazda3 (Mexico built)  
2022-2023 MX-30  
2022-2025 MX-5

## DESCRIPTION

Before judging a steering wheel as having premature wear or a defect, first clean the steering wheel as explained in the repair information. Some vehicles may have steering wheel stains caused by chemicals such as hand lotions.

**CONSUMER NOTICE:** The information and instructions in this bulletin are intended for use by skilled technicians. Mazda technicians utilize the proper tools/ equipment and take training to correctly and safely maintain Mazda vehicles. These instructions should not be performed by "do-it-yourselfers." Customers should not assume this bulletin applies to their vehicle or that their vehicle will develop the described concern. To determine if the information applies, customers should contact their nearest authorized Mazda dealership. Mazda North American Operations reserves the right to alter the specifications and contents of this bulletin without obligation or advance notice. All rights reserved. No part of this bulletin may be reproduced in any form or by any means, electronic or mechanical---including photocopying and recording and the use of any kind of information storage and retrieval system ---without permission in writing.



Steering Wheel Stained



Steering Wheel After Cleaning

Some vehicles may exhibit wear/peel-off of the leather steering wheel surface causing a poor appearance. This concern may be caused by an insufficient wear resistance of the steering wheel surface.



**NOTE:** Slight wear on a seam of the steering wheel is considered normal wear since friction and force are applied while turning the steering wheel.

**CONSUMER NOTICE:** The information and instructions in this bulletin are intended for use by skilled technicians. Mazda technicians utilize the proper tools/ equipment and take training to correctly and safely maintain Mazda vehicles. These instructions should not be performed by "do-it-yourselfers." Customers should not assume this bulletin applies to their vehicle or that their vehicle will develop the described concern. To determine if the information applies, customers should contact their nearest authorized Mazda dealership. Mazda North American Operations reserves the right to alter the specifications and contents of this bulletin without obligation or advance notice. All rights reserved. No part of this bulletin may be reproduced in any form or by any means, electronic or mechanical---including photocopying and recording and the use of any kind of information storage and retrieval system ---without permission in writing.



**NOTE:** Dents in the leather material are considered outside influence, however, if the concern is **found at PDI**, it should be repaired.

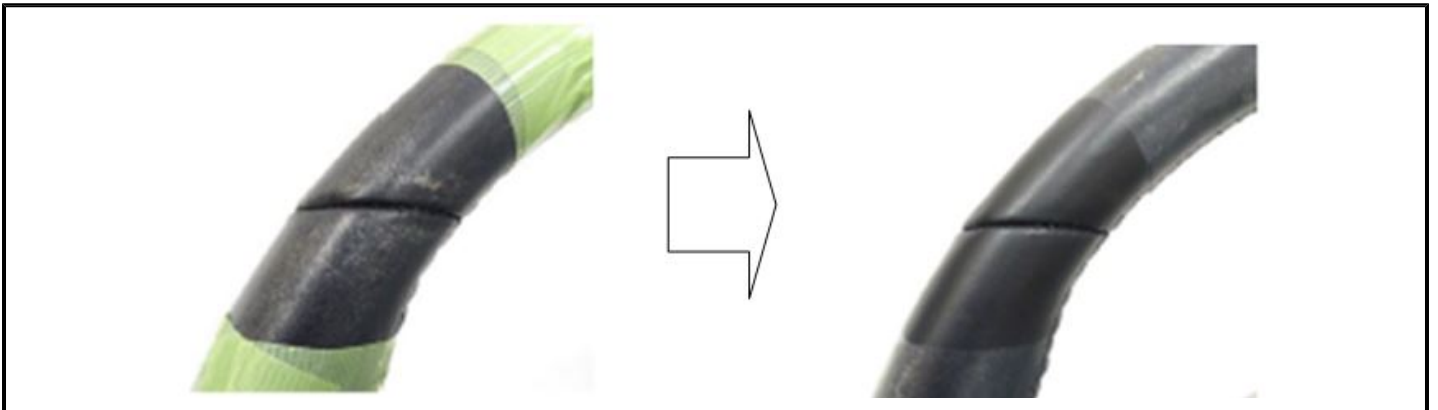
## REPAIR PROCEDURE

### LEATHER STEERING WHEEL HANDLING TIPS:

Unique care is needed since the leather steering wheel is delicate and coated with agents that improve durability without decreasing the touch and breathability of the leather. Refer to the information below for proper leather steering wheel maintenance.

### CLEAN:

Wipe the leather surface with a moist cloth using warm water if the leather is dirty. After wiping, dry off the remaining moisture with a clean dry towel.



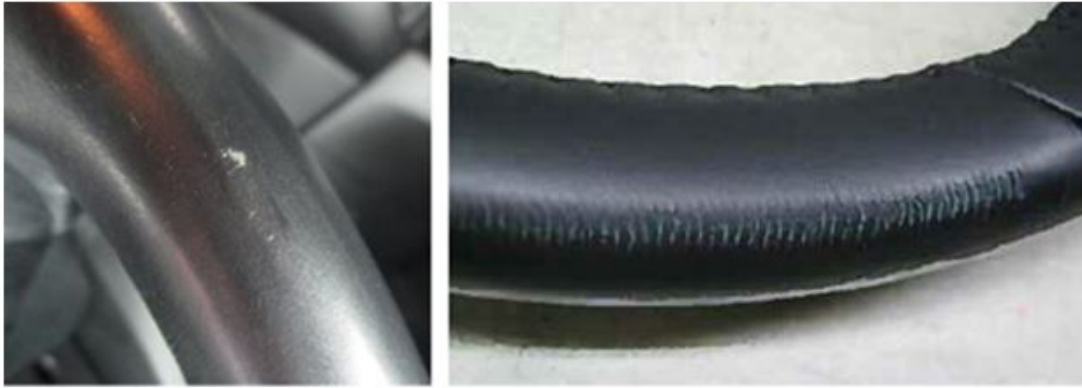
### CAUTION:

**CONSUMER NOTICE:** The information and instructions in this bulletin are intended for use by skilled technicians. Mazda technicians utilize the proper tools/ equipment and take training to correctly and safely maintain Mazda vehicles. These instructions should not be performed by "do-it-yourselfers." Customers should not assume this bulletin applies to their vehicle or that their vehicle will develop the described concern. To determine if the information applies, customers should contact their nearest authorized Mazda dealership. Mazda North American Operations reserves the right to alter the specifications and contents of this bulletin without obligation or advance notice. All rights reserved. No part of this bulletin may be reproduced in any form or by any means, electronic or mechanical---including photocopying and recording and the use of any kind of information storage and retrieval system ---without permission in writing.

- Do not use a rough surface towel or wipe it off with too much force to avoid wear to the leather.
- Do not use general leather cleaners or waxes when wiping off dirt since it may deteriorate the leather coating of the steering wheel.
- Perfumes, cosmetics, hand creams, sunscreens, wet tissue papers, excessive sweat, and sebum may also deteriorate the coating.

**OUTSIDE INFLUENCE:**

Do not scratch or scrub the leather with anything hard, such as a belt buckle, wristwatch, bracelet rings, etc. The examples below are damage that would not be covered under warranty.



**CONSUMER NOTICE:** The information and instructions in this bulletin are intended for use by skilled technicians. Mazda technicians utilize the proper tools/ equipment and take training to correctly and safely maintain Mazda vehicles. These instructions should not be performed by "do-it-yourselfers." Customers should not assume this bulletin applies to their vehicle or that their vehicle will develop the described concern. To determine if the information applies, customers should contact their nearest authorized Mazda dealership. Mazda North American Operations reserves the right to alter the specifications and contents of this bulletin without obligation or advance notice. All rights reserved. No part of this bulletin may be reproduced in any form or by any means, electronic or mechanical---including photocopying and recording and the use of any kind of information storage and retrieval system ---without permission in writing.