

Published  
ID: 102811

Close

Communication

Message

Target

Options

Approve / Deny

Clone

Submit Request

<b>Publish Dates</b>	<b>Start Date</b> 1/21/2025 7:00 AM
<ul style="list-style-type: none"><li>The Start Date is when the communication will be visible to dealers in DCMail.</li><li>The End Date is when the communication will no longer be visible to dealers in DCMail.</li><li><b>NOTE:</b> End Dates are limited to one (1) year from the Start Date. If you wish to lengthen the End Date, you may extend it at any time after publish.</li></ul>	<b>End Date</b> 2/11/2025 11:55 PM Note: All times are EST

Extend End Date

<b>Title</b>	TRANSMISSION - 8 SPEED
<i>What will display in DCMail for dealers to click on. <u>TIP:</u>Keep titles short, but specific and eye catching.</i>	

<b>Flagged for Reporting Agency</b>	NO
-------------------------------------	----

<b>Communication Summary</b>	TRANSMISSION - 8 SPEED
<i>To increase search capability and visibility of your communication, please provide a brief summary or your message (140 characters max). This will display when dealers hover over your communication.</i>	

<b>Message</b>	
<i>The body of your communication. Use the formatting toolbar above to format text, insert tables, pictures, and/or hyperlinks.</i>	
<i>Click Edit &gt; Attach File to attach documents</i>	
<b>IMPORTANT NOTES:</b>	
<ul style="list-style-type: none"><li>Pictures must have unique file names. If you receive an error message when uploading a picture, it means the file name has already been chosen. Simply change your file name and try again.</li><li>Communications cannot exceed more than 12MB; this includes images and text, and all attachments.</li></ul>	
	You have been identified as either having stock on hand or in transit to your dealership. Please check and return suspect stock of part numbers: <b>68415437AE</b> , <b>68338289AE</b> , <b>68615857AB</b> and <b>68583446AB</b> . Please refer to QIR attachment. Please return all parts back to your facing depot using <b>Return Code 02</b> , before 11th February 2025. For replacement place new orders. Return any open orders in process too. Direct questions regarding returns via email to <a href="mailto:mopardmail@stellantis.com">mopardmail@stellantis.com</a> .

Attachments [QIR\\_English.pdf](#)

File Attachment Information

File Size (MB)	File Name
0.16	QIR_English.pdf

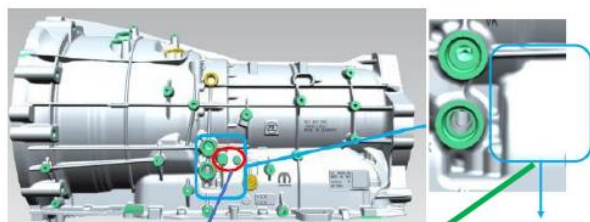


21-Jan-2025

Quality Inspection Request  
**TRANSMISSION - 8 SPEED**  
Suspect Part Identification

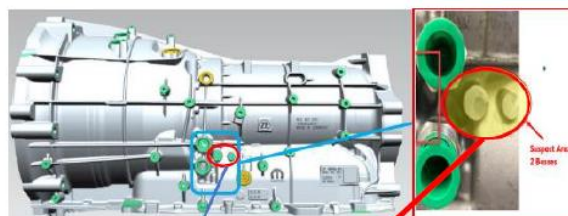
Part Numbers: 68415437AE, 68338289AE, 68615857AB and 68583446AB.

Correct Part



Good parts- Parts with No bosses present in marked area are good parts

Suspect Part



Suspect Parts – Parts with 2 bosses present in marked area are suspect parts and must be returned