



# Service Bulletin

Bulletin No.: 22-NA-172

Date: January, 2025

## TECHNICAL

**Subject: Trailer Tire Pressure Only Reading Up To 100 PSI (689 kPa), New Parts To Increase To 147 PSI (1013 kPa)**

Brand:	Model:	Model Year:		Build Date:		Engine:	Transmission:
		from	to	from	to		
Chevrolet	Silverado 1500	2020	2021	SOP	Built prior to December 1, 2021		
	Silverado 1500 LTD (RPO J21, VIN Digit 5 = W / Y)	2022	2022				
	Silverado 1500 New (RPO J22, VIN Digit 5 = A / D)	2022	2022				
	Silverado 2500HD/3500HD	2020	2022	SOP	Flint built prior to October 1, 2021		
GMC	Sierra 1500	2020	2021	SOP	Built prior to December 1, 2021		
	Sierra 1500 Limited (RPO J21, VIN Digit 5 = 8 / 9)	2022	2022				
	Sierra 1500 New (RPO J22, VIN Digit 5 = H / U)	2022	2022				
	Sierra 2500HD/3500HD	2020	2022	SOP	Flint built prior to October 1, 2021		

<b>Involved Region or Country</b>	North America
<b>Additional Options (RPOs)</b>	Equipped with RPOs PTT and U1D
<b>Condition</b>	Some customers may comment on the TTPM (Trailer Tire Pressure Module) and TTPS (Trailer Tire Pressure Sensors) only reading up to 100 PSI (689 kPa). The new TTPM and TTPS broadcast a signal up to 147 PSI (1013 kPa) and new calibration for the Radio will display a higher signal.
<b>Cause</b>	The cause of the condition may be the original sensors were designed to read up to only 100 PSI (689 kPa).
<b>Correction</b>	<p><b>Important:</b> This repair is a customer pay alteration. All work and payment, authorization must come from the customer.</p> <p>Replace the TTPM <i>Trailer Tire Pressure Indicator Module Replacement</i> and follow the relearn procedure, as well as the four Trailer Tire Pressure Sensors <i>Trailer Tire Pressure Indicator Sensor Replacement</i>. Then reprogram the Radio.</p> <p><b>2020 Model Year Vehicles</b>— Replace both the TTPM and sensors then update the Radio software to V168 or higher.</p> <p><b>2021 Model Year Vehicles</b>— Replace both the TTPM and sensors then update the Radio software to V164 or higher.</p> <p><b>2022 Model Year 1500 J21 Trucks</b>— Built prior to December 1, 2021, replace just the TTPM on vehicles then update the Radio to most current software. Vehicles built after already have the new TTPM.</p>

**2022 Model Year 1500 J22 Trucks— DO NOT** need to replace the TTPM or sensors, ensure the Radio software is V164 or higher.

**2022 Heavy Duty Trucks—**

- Vehicles built in Flint prior to October 1, 2021, replace both the TTPM and sensors then update the Radio software to V164 or higher.
- Vehicles built in Oshawa **DO NOT** need to replace the TTPM or sensors. Ensure the Radio software is V164 or higher.



Example of the High Pressure TTPMs

6309767

## Service Procedure

**Important:** Service agents must comply with all International, Federal, State, Provincial, and/or Local laws applicable to the activities it performs under this bulletin, including but not limited to handling, deploying, preparing, classifying, packaging, marking, labeling, and shipping dangerous goods. In the event of a conflict between the procedures set forth in this bulletin and the laws that apply to your dealership, you must follow those applicable laws.

**Caution:** Before downloading the update files, be sure the computer is connected to the internet through a network cable (hardwired). DO NOT DOWNLOAD or install the files wirelessly. If there is an interruption during programming, programming failure or control module damage may occur.

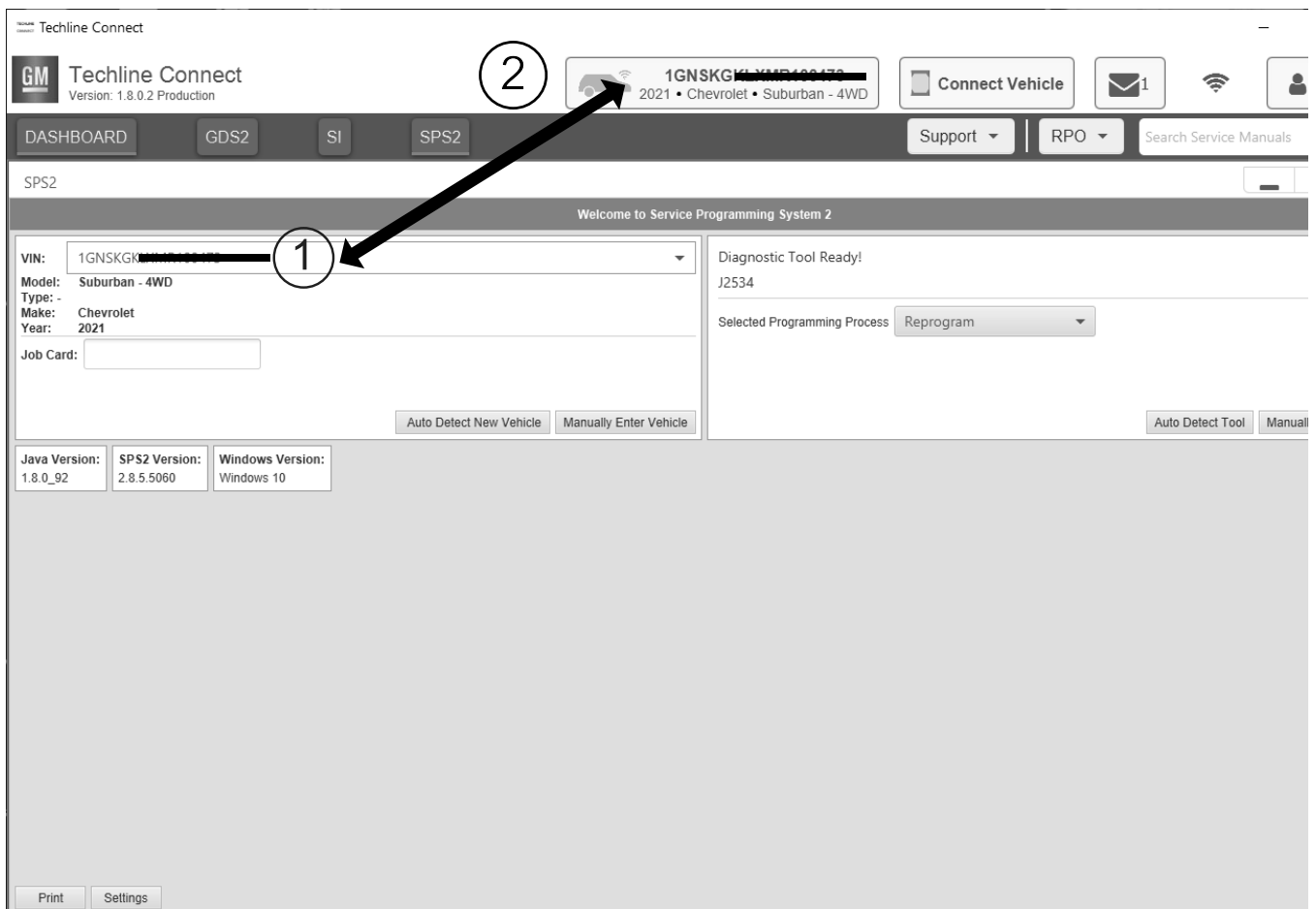
- Ensure the programming tool is equipped with the latest software and is securely connected to the data link connector. If there is an interruption during programming, programming failure or control module damage may occur.
- Stable battery voltage is critical during programming. Any fluctuation, spiking, over voltage or loss of voltage will interrupt programming. Install a GM Authorized Programming Support Tool to maintain system voltage. Refer to [www.gmdesolutions.com](http://www.gmdesolutions.com) for further information. If not available, connect a fully charged 12 V jumper or booster pack disconnected from the AC voltage supply. DO NOT connect a battery charger.

- Follow the on-screen prompts regarding ignition power mode, but ensure that anything that drains excessive power (exterior lights, HVAC blower motor, etc) is off
- Clear DTCs after programming is complete. Clearing powertrain DTCs will set the Inspection/Maintenance (I/M) system status indicators to NO.

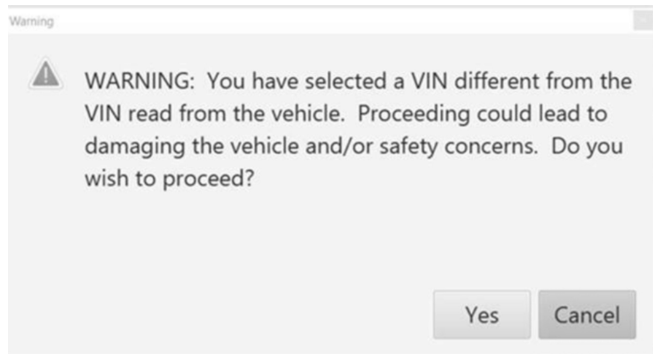
**Important:** The service technician always needs to verify that the VIN displayed in the TLC left side drop down menu and the top center window match the VIN plate of the vehicle to be programmed prior to using Service Programming System 2 (SPS2) for programming or reprogramming a module.

- For the TLC application, service technicians need to always ensure that the power mode (ignition) is “ON” before reading the VIN from the vehicle’s VIN master module and that they do not select a VIN that is already in the TLC application memory from a previous vehicle.
- If the VIN that shows up in the TLC top center window after correctly reading the VIN from the vehicle does not match the VIN plate of the vehicle, manually type in the VIN characters from the vehicle VIN plate into the TLC top center window and use these for programming or reprogramming the subject module with the correct vehicle VIN and software and/or calibrations.
- The Engine Control Module (ECM) is the master module (for VIP vehicles) that TLC reads to determine the VIN of the vehicle. If the VIN read from the vehicle by TLC does not match the VIN plate of the vehicle, the ECM also needs to be reprogrammed with the correct VIN, software and calibrations that match the vehicle’s VIN plate.
- The Body Control Module (BCM) is the master module (for GEM vehicles) that TLC reads to determine the VIN of the vehicle. If the VIN read from the vehicle by TLC does not match the VIN plate of the vehicle, the BCM also needs to be reprogrammed with the correct VIN, software and calibrations that match the vehicle’s VIN plate.

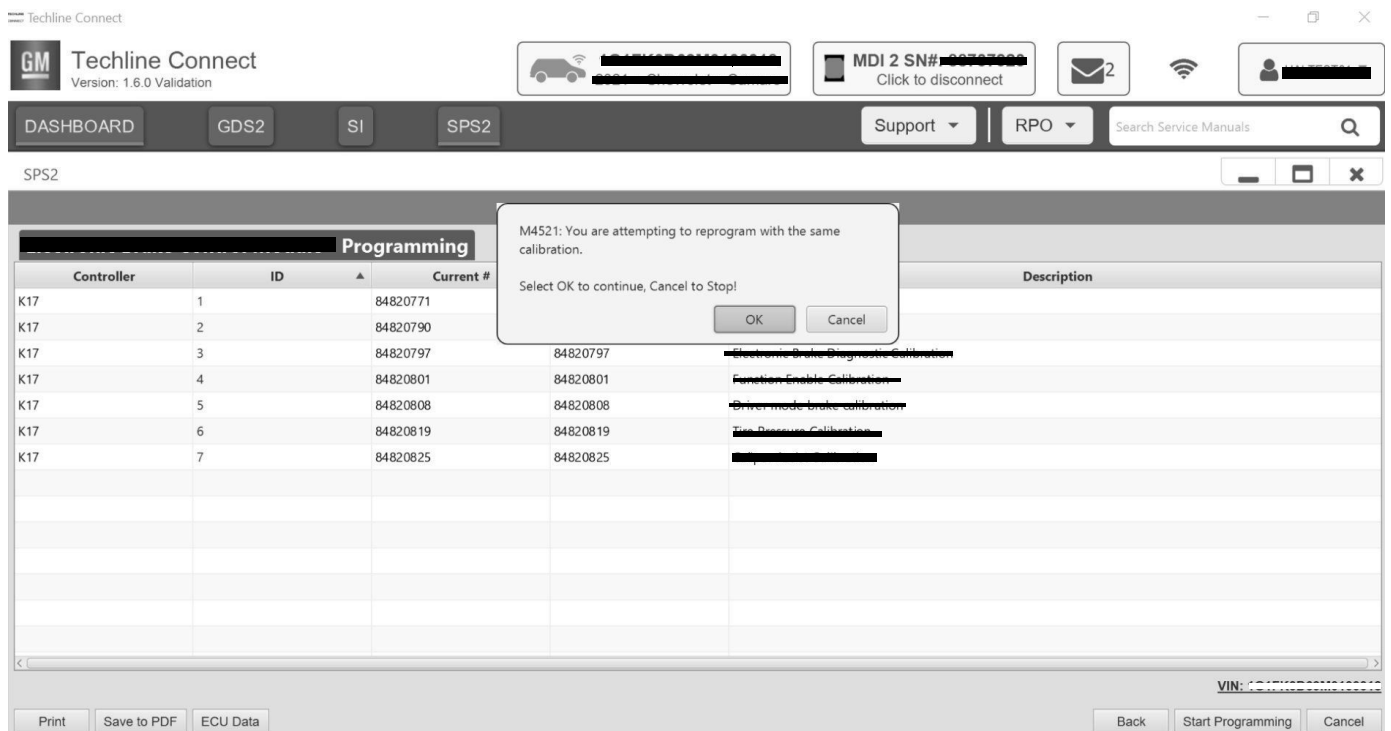
**Caution:** Be sure the VIN selected in the drop down menu (1) is the same as the vehicle connected (2) before beginning programming.



**Important:** If the vehicle VIN DOES NOT match, the message below will be shown



5877000

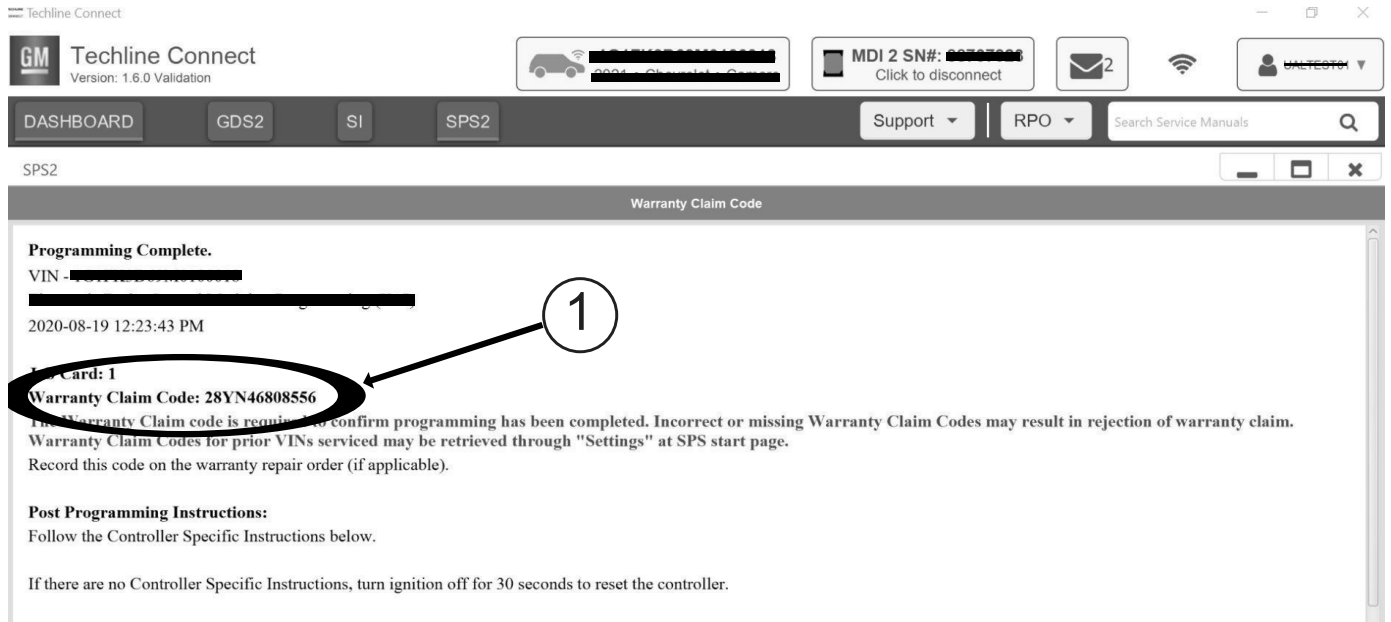


5644477

**Important:** Techline Connect and TIS2WEB screens shown above.

**Important:** If the same calibration/software warning is noted on the TLC or SPS Summary screen, select OK and follow screen instructions. After a successful programming event, the WCC is located in the Service Programming System dialogue box of the SPS Summary screen. No further action is required. Refer to the Warranty section of the bulletin.

1. Reprogram the Radio. Refer to *A11 Radio: Programming and Setup*.



5644478

**Note:** The screenshots above are an example of module programming and may not be indicative of the specific module that is being programmed. Module selection and VIN information have been blacked out.

**Important:** To avoid warranty transaction rejections, you **MUST** record the warranty claim code provided on the Warranty Claim Code (WCC) screen shown above on the job card. Refer to callout 1 above for the location of the WCC on the screen.

- Record Warranty Claim Code on job card for warranty transaction submission.

### Parts Information

\* We believe this source and their products to be reliable. There may be additional manufacturers of such products/materials. General Motors does not endorse, indicate any preference for, or assume any responsibility for the products or material from this firm or for any such items that may be available from other sources.

Causal Part	Description	Part Number	Qty
X	MODULE ASM- TRLR TIRE PRESS IND	85104898	1
X	SENSOR ASM- TIRE PRESS IND	13545366	4

<b>Version</b>	2
<b>Modified</b>	Released April 05, 2023 Revised January 22, 2025 - Revised references of IPC to state Radio programming.

GM bulletins are intended for use by professional technicians, NOT a "do-it-yourselfer". They are written to inform these technicians of conditions that may occur on some vehicles, or to provide information that could assist in the proper service of a vehicle. Properly trained technicians have the equipment, tools, safety instructions, and know-how to do a job properly and safely. If a condition is described, **DO NOT** assume that the bulletin applies to your vehicle, or that your vehicle will have that condition. See your GM dealer for information on whether your vehicle may benefit from the information.



**WE SUPPORT VOLUNTARY  
TECHNICIAN  
CERTIFICATION**