



SPYDER 2024 No Reverse When Hot - 142594

Summary:

Reverse gear not engaging when the unit is hot

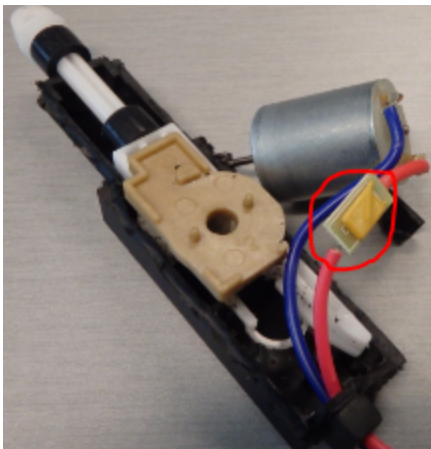
Type:

General

TST Detail:

Problem:

On some MY24 the Reverse Gear fails to engage when the unit is hot. Our tests confirms that some reverse actuators failed because of the internal thermal protection is too sensitive.



Solution:

Actuator 710011269 was developed to cure this symptom

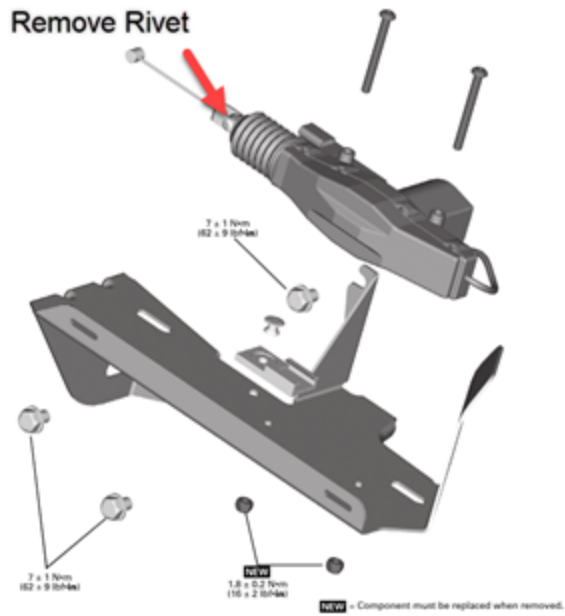
The actuator will need to be installed on the existing bracket along with the cable

Hardware required :

1x 710011269 ACTUATOR_REVERSE

1x 390403000 RIVET_POP 5/32 X ,525

2x 232541414 NUT-STOP ELASTIC DIN.985



Inspection Procedure:

The reverse lever installed on the gearbox should not exceed 3kg to pull. You can use a fish scale to check required force. If the reverse engages when pulling on the actuator, the actuator is at fault.

Warranty:

Regular warranty applies

Attachment:

First Published By: Marc Andre Beaubien on 2024-05-30

Last Modified By: Marc Andre Beaubien on 2025-01-07