

**ATTENTION:**  
 GENERAL MANAGER   
 PARTS MANAGER   
 CLAIMS PERSONNEL   
 SERVICE MANAGER

IMPORTANT - All Service Personnel Should Read and Initial in the boxes provided, right.


© 2024 Subaru of America, Inc. All rights reserved.



QUALITY DRIVEN® SERVICE

**SERVICE BULLETIN**

**APPLICABILITY:** 2020-23MY Legacy & Outback  
 2020-23MY Crosstrek  
 2022-23MY Forester Wilderness

**NUMBER:** 16-149-25  
**DATE:** 01/13/25

**SUBJECT:** TR580 Control Valve & Connector Cover /  
 DTCs P2721, P2763, P0974, & P0977

**INTRODUCTION:**

This bulletin announces availability of the new TR580 control valve and connector cover developed to address cases of the following DTCs detected by the Transmission Control Module (TCM):

- **P2721:** Pressure Control Solenoid “D” Control Circuit High
- **P2763:** Torque Converter Clutch Pressure Control Solenoid Control Circuit High
- **P0974:** Shift Solenoid “A” Control Circuit High
- **P0977:** Shift Solenoid “B” Control Circuit High

Condensation may accumulate within the transmission cover causing moisture to seep into the harness connector for the CVT control valve. This can affect the control valve’s electrical connections causing the DTCs listed above to set. The new TR580 connector cover prevents moisture intrusion. The new TR580 control valve has a redesigned shape developed to prevent any interference with the harness connection. If DTCs P2721, P2763, P0974, & P0977 are detected, follow the updated service procedures outlined in this bulletin.

**CAUTION: VEHICLE SERVICING PERFORMED BY UNTRAINED PERSONS COULD RESULT IN SERIOUS INJURY TO THOSE PERSONS OR TO OTHERS.**

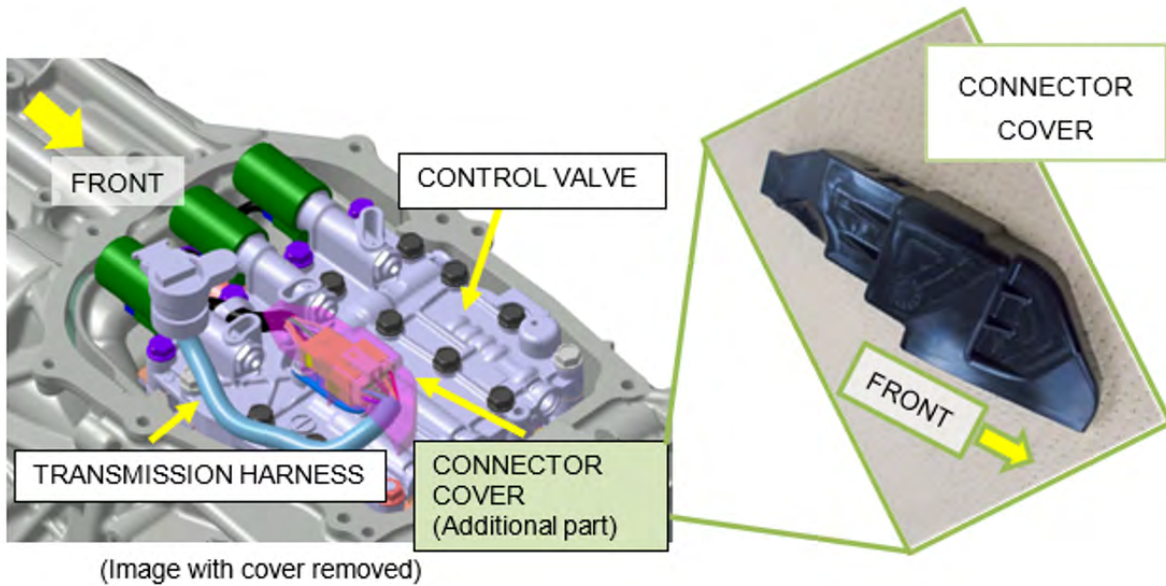
Subaru Service Bulletins are intended for use by professional technicians ONLY. They are written to inform those technicians of conditions that may occur in some vehicles, or to provide information that could assist in the proper servicing of the vehicle. Properly trained technicians have the equipment, tools, safety instructions, and know-how to do the job correctly and safely. If a condition is described, DO NOT assume that this Service Bulletin applies to your vehicle, or that your vehicle will have that condition.

**Subaru of America, Inc. is ISO 14001 Compliant**

ISO 14001 is the international standard for excellence in Environmental Management Systems. Please recycle or dispose of automotive products in a manner that is friendly to our environment and in accordance with all local, state and federal laws and regulations.

*Continued...*

**DETAILS OF DESIGN CHANGE:**



**PRODUCTION CHANGE INFORMATION:**

The new control valve and cover have been incorporated into vehicle production as per the table below.

Model	Starting VIN
Legacy	P3014550
Outback	P3202437
Forester	PH441307
Crosstrek	P8322205

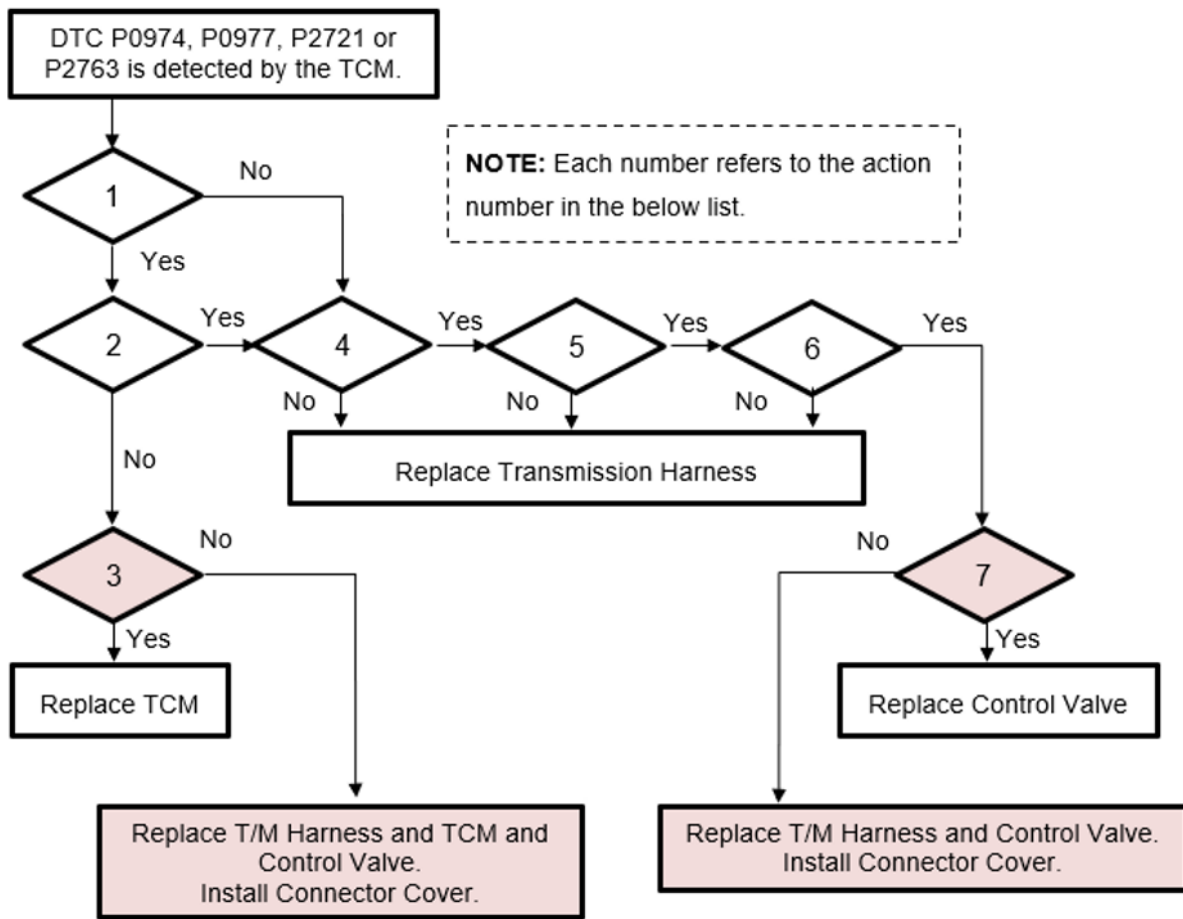
**PART INFORMATION:**

**REMINDER:** Always order the most up-to-date replacement parts based on the specific VIN being repaired.

Model	Part Description	Part Number	Quantity
All	COVER, CONNECTOR	29174AA010	1
All	CONTROL VALVE KIT	31825AA102	1
Legacy, Outback, and Crosstrek	HARNESS-TRANSMISSION	24031AA893	1
Forester Wilderness	HARNESS-TRANSMISSION	24031AA991	1

*Continued...*

**SERVICE PROCEDURE / INFORMATION:**



**IMPORTANT:** Updated Service Manual information is outlined in **RED** below. This information is to be used in conjunction with the applicable Subaru Service Manual.

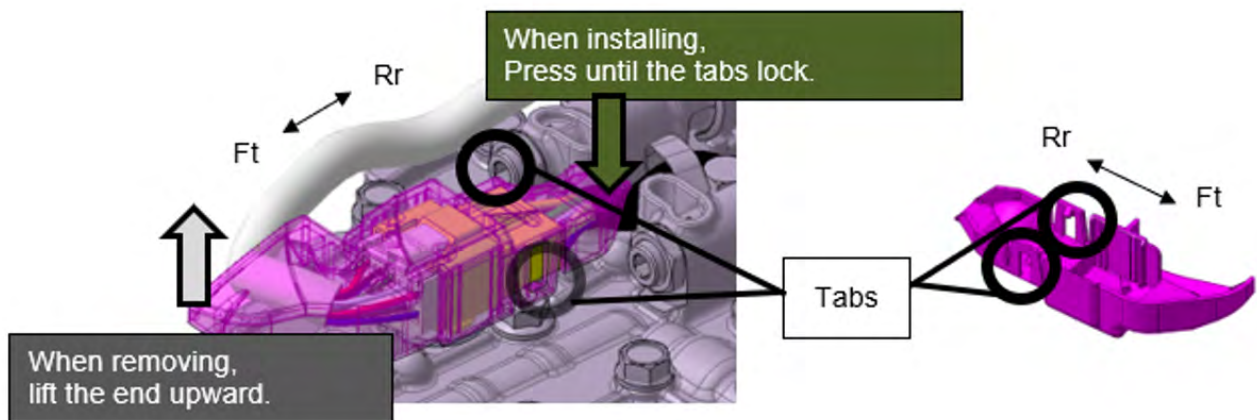
No.	Inspection List	Yes	No	Procedure Change from Current S.M.
1	Inspect primary up solenoid (when the engine is cold: ATF temperature approx. 20°C/68°F). Measure the resistance between TCM connector and transmission body. (*)	Go to 2	Go to 4	No change
2	Inspect primary up solenoid (when the engine is warmed-up: ATF temperature 80° C/176°F or more). Measure the resistance between TCM connector and transmission body. (*)	Go to 4	<b>Go to 3</b>	The flow changes in the case of 'No'.
<b>3</b>	<b>Confirm if the connector cover has been attached or not.</b>	Replace TCM	<b>Replace T/M Harness and TCM and Control Valve. Install Connector Cover.</b>	Additional flow
4	Inspect the harness inside transmission. Inspect for harness pinching/damage.	Go to 5	Replace T/M Harness	No change
5	Inspect the transmission harness (open circuit). Measure the resistance between TCM connector and control valve body connector. (*)	Go to 6	Replace T/M Harness	No change

*Continued...*

No.	Inspection List	Yes	No	Procedure Change from Current S.M.
6	Inspect the transmission harness (short to power supply). Measure the voltage between TCM connector and transmission body. (*)	Go to 7	Replace T/M Harness	The flow changes in the case of 'Yes'.
7	Confirm if the connector cover has been attached or not.	Replace Control Valve	Replace T/M Harness and Control Valve. Install Connector Cover.	Additional flow

(\*) Refer to each DTC for the location and resistance to be measured.

### REMOVING AND INSTALLING THE CONNECTOR COVER:



### WARRANTY / CLAIM INFORMATION:

For vehicles within the Basic New Car Limited or Powertrain Limited Warranty period or covered by an active Subaru Added Security Classic or Gold plan, this repair may be submitted using the following claim information:

Labor Operation #	Labor Description	Legacy & Outback	Crosstrek	Forester Wilderness	Failure Code
B303-086	CVT WIRE HARNESS TEST AND REPLACE	5.3h	5.5h	4.9h	MSN-41
C303-808	CVT VALVE BODY REPLACE	.3h	.3h	.3h	
C860-703*	TCM REPLACE	.2h	.2h	.2h	

When Not replacing Harness Assembly use either

Labor Operation #	Labor Description	Legacy & Outback	Crosstrek	Forester Wilderness	Failure Code
B300-386	CVT VALVE BODY TEST & REPLACE	1.6h	1.6h	1.6h	MPO-41

*Continued...*

Labor Operation #	Labor Description	Legacy & Outback	Crosstrek	Forester Wilderness	Failure Code
B303-786*	TCM REPLACEMENT	.9h	.9h	.9h	MJT-41

\*For Claim Submission TCM Replacement requires Transmission Control Module CID number.

**IMPORTANT REMINDERS:**

- SOA strongly discourages the printing and/or local storage of service information as previously released information and electronic publications may be updated at any time.
- Always inspect for any open recalls or campaigns anytime a vehicle is in for servicing.
- Always refer to STIS for the latest service information before performing any repairs.