



PROTERRA



TECHNICAL SERVICE BULLETIN

ISSUE DATE:	10/11/2021
SERVICE BULLETIN SUBJECT:	ZX5 BTMS Mounting Strap Bracket Retrofit
VINs or MODELS AFFECTED:	Service Specified Buses
COMPLETE BY:	Next Service Opportunity
SERVICE BULLETIN #:	SC-21-143
LABOR OPERATION CODE:	N/A

NOTICE! It is expected that this process may require up to 1 hour per bus. Please schedule appropriately to minimize vehicle downtime.

ZXF BTMS MOUNTING STRAP BRACKET RETROFIT

Description

The procedure updates the battery heater mounting straps to a more robust version.

Tools/Parts Required

Tools and Supplies Required:

- Ratchet
- 13mm Socket
- 13mm Combination Wrench
- Small Jack Stand
- Calibrated Torque Wrench
- Orange Torque Stripe Paint
- Loctite 242
- Approved Safety Knife

Kit Parts Required:

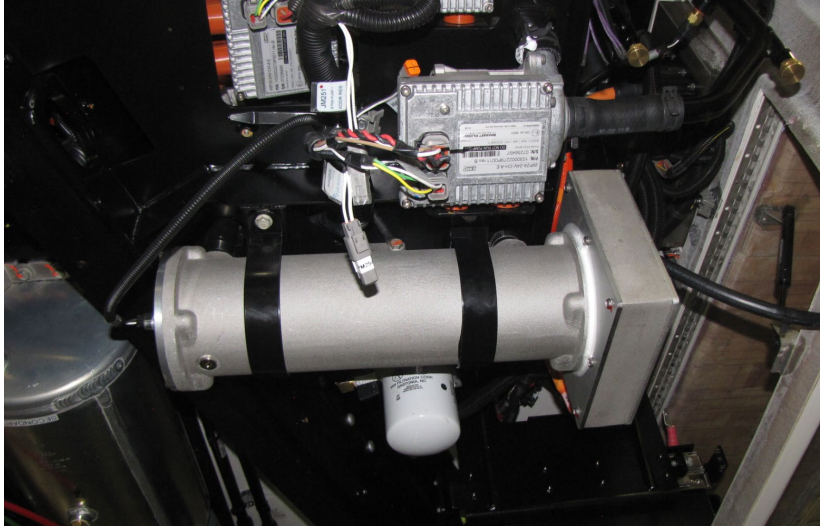
- 059593 RETROFIT KIT, BRACKET STRAPS, BTMS (Consisting of)
 - 125-5960 BRACKET, STRAP 2 EA

Parts Required but not included in the kit:

- 037391 NEOPRENE ADHESIVE-BACK STRIP, 1" x 1/16" THICK 620 mm

Procedure

1. Complete the Proterra approved Lockout/Tagout procedure to make the bus safe for work.
2. Using a 10mm Ratchet/Socket, remove the belly pans to access the BTMS Heater shown in the following photograph.



3. Place the Small Jack Stand below the BTMS Heater to support it when the strap bolts are removed.
4. Using an Approved Safety Knife, cut the Neoprene Strip (037391) in half.
5. Peel away the Backing on the Neoprene Strips (037391) and apply them to the inside surface of the Straps (125-5960).
6. Using a 13mm Ratchet/Socket, remove the two Bolts that secure the Curbside Strap to the Bracket.



Remove Curbside
Strap

7. Using a 13mm Ratchet/Socket, install a new Strap (125-5960) in place of the one that was removed using the original fasteners.
8. Repeat the process to install a new Strap (125-5960) on the other side of the BTMS Heater using the original fasteners.
9. Using a Calibrated Torque Wrench with a 13mm Socket, **torque the fasteners to 22 foot pounds.**
10. Using Orange Torque Stripe Paint, mark the properly torqued fasteners.
11. Remove the Jack Stand.
12. Using a 10mm Ratchet/Socket, reinstall the belly pans. Add Loctite 242 to each bolt as it is reinstalled.
13. Remove the Lockout/Tagout devices and return the bus to service.