



GROUP	MODEL
<b>Voluntary Emissions Service Campaign</b>	<b>2023-2025MY Sportage HEV, PHEV (NQ5 P/HEV)</b>
NUMBER	DATE
<b>SC322 (Rev 1, 1/29/2025)</b>	<b>January 2025</b>

## VOLUNTARY EMISSIONS SERVICE CAMPAIGN

### **HYBRID CONTROL UNIT (HCU) LOGIC IMPROVEMENT (SC322)**

SUBJECT:

#### **NOTICE**

**This bulletin has been revised to include additional information. New/revised sections of this bulletin are indicated by a black bar in the margin area.**

This bulletin provides the procedure to update the software logic of the Hybrid Control Unit (HCU) system on certain 2023-2025MY Sportage HEV (NQ5 HEV) vehicles produced from February 15, 2022 through July 25, 2024 and Sportage PHEV (NQ5 PHEV) vehicles produced from June 16, 2022 through July 24, 2024. The Hybrid Control Unit (HCU) in the subject vehicles may intermittently receive repeated “accelerate” CAN signals due to a signal processing error involving specific instrument clusters when customers “set” or “resume” cruise control. This concern can occur after the driver rapidly presses the “accelerate” rocker switch on the steering wheel. This does not affect the driver’s ability to pause, cancel or turn off the cruise control function. This condition may cause the vehicle to release air pollutants which exceed Federal and California standards. These standards were established to protect the public health and welfare from the dangers of air pollution. Follow the procedure outlined in this publication to apply the improved logic to the ‘HCULDC’ system using the KDS ECU Upgrade function as described in this bulletin. Refer to [SST081](#) for software upgrade instructions using Kia Diagnostic System (KDS) tablet and VCI-II. Before conducting the procedure, verify that the vehicle is included in the list of affected VINs.



#### **NOTICE**

**Repair status for a VIN is provided on KDealer+ (Service → Warranty Coverage → Warranty Coverage Inquiry → Campaign Information). Not completed Recall / Service Action reports are available on KDealer+ (Consumer Affairs → Not Completed Recall → Recall VIN → Select Report), which includes a list of affected vehicles.**

**ECU Upgrade Procedure:**

To correct this condition, the ECU should be reprogrammed using the KDS download, as described in this bulletin.

## Upgrade Event Name

749.NQ5 (P)HEV HCULDC Upgrade for Cruise Control Operation Logic Improvement

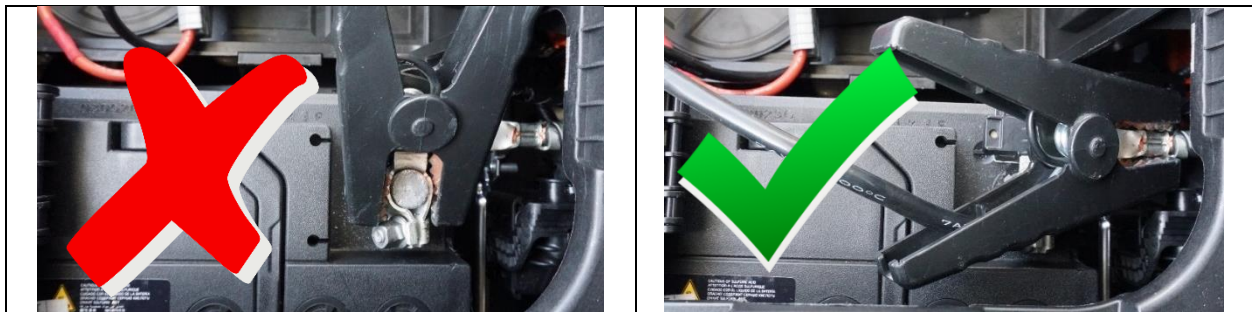
**NOTICE**

- Confirm a fully charged battery (12.3 volts or higher is necessary) is used or utilize a fully charged jump starter box connected to the battery.
- **Ensure the KDS GDS is sufficiently charged at 60% or higher prior to reflash.**
- All ECU upgrades must be performed with the ignition set to the 'ON' position unless otherwise stated.
- **Damaged VCI II units should not be used and promptly replaced.**
- Be careful not to disconnect the VCI-II connected to the vehicle during the ECU upgrade procedure.
- **DO NOT start the engine during ECU upgrade.**
- DO NOT turn the ignition key 'OFF' or interrupt the power supply during ECU upgrade.
- **When the ECU upgrade is completed, turn the ignition 'OFF' and wait 10 seconds before starting the engine.**
- ONLY use approved ECU upgrade software designated for the correct application.

**IMPORTANT**

It is recommended to ALWAYS check the Electronic Parts Catalog (EPC) to locate the ECU Part Number respective to Auto/Manual Mode ROM IDs. DO NOT reference the parts label affixed to the ECU.

[Connect the negative \(-\) terminal to the battery as shown below.](#)



SUBJECT:

## HYBRID CONTROL UNIT (HCU) LOGIC IMPROVEMENT (SC322)

## ROM ID Information Table:

## Upgrade Event #749

**① IMPORTANT**

It is recommended to ALWAYS check the Electronic Parts Catalog (EPC) to locate the ECU Part Number respective to Auto/Manual Mode ROM IDs. DO NOT reference the parts label affixed to the ECU.

Model	System	Comment	ECU P/No.	ROM ID	
				Previous	New
NQ5 HEV	HCU	17" 2WD	36600 3DBN0	GNQC2N6HNQ0LC720 GNQC2N6HNS0LC720 GNQC2N6HNS1LC720	GNQC2N6HNS2LC720
		17"/18" 4WD	36600 3DBN1	GNQC2N6HNQ0LC740 GNQC2N6HNS0LC040 GNQC2N6HNS1LC040	GNQC2N6HNS2LC040
NQ5 PHEV		19" 4WD	36600 3DAN5	GNQC2N6HNQ0 C940 GNQC2N6PNS0 C940 GNQC2N6PNS1 C940	GNQC2N6PNS2C940

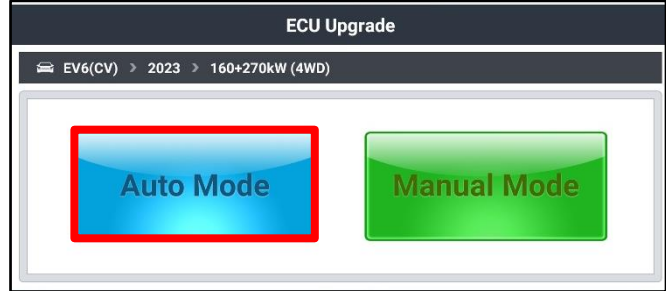
*To verify the vehicle is affected, be sure to check the Calibration Identification of the vehicle's ECM ROM ID and reference the Information Table as necessary.*



**Software Information:**

The required software must be installed by selecting the **'Auto Mode'** ECU Upgrade option.

**Note:** In some cases, the 'Manual Mode' installation option may be required ONLY if the 'Auto Mode' function fails or is otherwise noted above.



**NOTICE**

**If the automatic upgrade fails, turn the ignition 'OFF' for about 10 seconds then place it back in the 'ON' position to reset the control unit BEFORE performing the manual upgrade.**

'Manual Mode' passwords

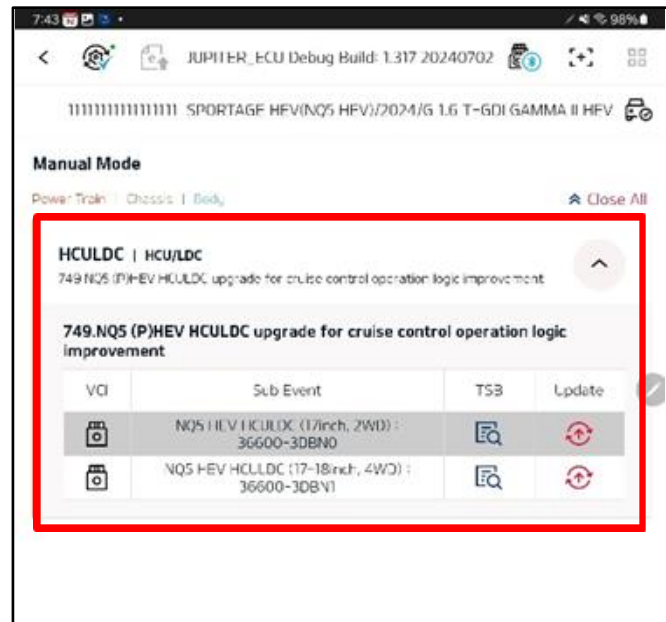
Menu	Password
NQ5 HEV HCULDC (17inch, 2WD): 36600-3DBN0	4247
NQ5 HEV HCULDC (17~18inch, 4WD): 36600-3DBN1	9843
NQ5 PHEV HCULDC (19inch, 4WD): 36600-3DAN5	2940

**UPGRADE EVENT:**

Select the applicable **'HCULDC'** 'system' module and **'Event Group'** number in the ECU Upgrade.

- **749. NQ5 (P)HEV HCULDC Upgrade for Cruise Control Operation Logic Improvement**

Verify the affected vehicle Calibration Identification of the applicable ECU ROM ID and reference the Information Table on page 3 as necessary.



**SUBJECT: HYBRID CONTROL UNIT (HCU) LOGIC IMPROVEMENT (SC322)**

**ATTENTION: THE PROOF OF CORRECTION CARD AND CAMPAIGN COMPLETION LABEL ARE RESTRICTED ONLY TO DEALERS IN THE FOLLOWING STATES:**

California, Connecticut, Delaware, Massachusetts, Maine, Maryland, New Jersey, New York, Oregon, Pennsylvania, Rhode Island, Vermont, and Washington. See Parts Information below to order the Proof of Correction Card and Campaign Completion Label from the PDC.

**VEHICLE EMISSION RECALL - PROOF OF CORRECTION CARD**

A Vehicle Emission Recall - Proof of Correction card must be filled out for all vehicles registered in California, Connecticut, Delaware, Massachusetts, Maine, Maryland, New Jersey, New York, Oregon, Pennsylvania, Rhode Island, Vermont, and Washington. Residents of these states, who own an affected vehicle, will be required to possess a Vehicle Emission Recall - Proof of Correction card as evidence of voluntary service campaign completion, when they apply for vehicle registration renewal.

**WHAT TO DO WITH THE CARD:**

The Vehicle Emission Recall - Proof of Correction card must be completed by the Dealership's Service Manager using a permanent ink pen. A fine point pen is recommended. When filling in the information, copy the information directly from the vehicle, not the repair order. **ALL INFORMATION MUST BE PRINTED AND NEAT.**

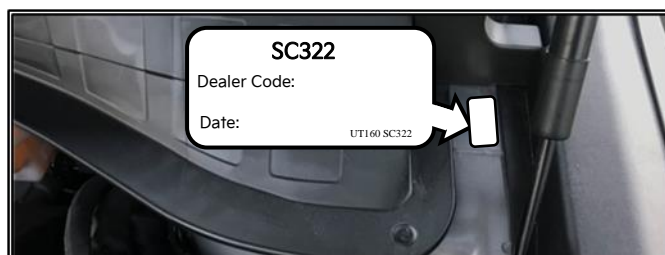
**NOTE: DO NOT COMPLETE THE CARD UNLESS THE SERVICE CAMPAIGN WORK IS COMPLETED.**

The copy of the card shown below indicates the areas to be filled in. Each area must be filled in. The completed card should be given to the owner of the vehicle upon completion of the Campaign and placement of the Campaign Completion Label outlined below.

**FILLING OUT AND APPLYING THE CAMPAIGN COMPLETION LABEL (CA and S.177 STATES ONLY):**

The dealer must fill in the Dealer Code and Date information fields on the Campaign Completion Label. Once complete, affix the campaign completion label under the hood of the vehicle, as shown below.

**CA and S.177 States Only:** Apply SC322 Campaign Completion Label onto the body in the area next to the shock tower, as shown. **NOTE: Be sure to clean the mounting surface to ensure proper label adhesion.**



**SUBJECT: HYBRID CONTROL UNIT (HCU) LOGIC IMPROVEMENT (SC322)**


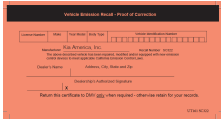
**AFFECTED VEHICLE RANGE:**

Model	Production Date Range
Sportage HEV (NQ5 HEV)	February 15, 2022 to July 25, 2024
Sportage PHEV (NQ5 PHEV)	June 16, 2022 to July 24, 2024

**REQUIRED TOOL:**

Tool Name	SST #	Figure	Comments
KDS	N/A		Kia Diagnostic System

**REQUIRED PART:**

Part Name	Part Number	Figure	Qty.
Campaign Completion Label	UT160 SC322		1
Vehicle Emissions Recall Proof of Correction Card	UT161 SC322		1

**WARRANTY INFORMATION:**

**N Code: N99 C Code: C99**

Claim Type	Causal P/N	Qty.	Repair Description	Labor Op Code	Op Time	Replacement P/N	Qty.
R	36601 3DBN1	0	(SC322) HCU Logic Improvement	240128R0	0.4 M/H	N/A	0

**Note:** Refer to [Warranty Bulletin 2025-03](#) for claim submission procedures.

**NOTICE**

VIN inquiry data for this repair is provided for tracking purposes only. Kia retailers should reference [SC322](#) when accessing the KDealer+ system.

