

## Wind Or Airflow Noises In Area Of Doors

---

Topic number	LI72.10-P-062500
Version	10
Function group	72.10 - Front door
Date	1/23/25
Validity	MODEL
	205.0/1/2 (code 805, 806, 807, 808)
	253.9 up to manufacturing date: February 1 2016
Reason for change	Restriction of validity. This document no longer applies to vehicle model series 205 facelift (as of code 809) and model series 253 from manufacturing date Feb 2016.

---

### Complaint

Wind or airflow noises in the area of the doors

### Cause

Airflow noises or tire noise.

The noises entering the interior may be perceived as too loud.

### Remedy

#### MODEL 205/0/1/2

1. Check door adjustment. Also check the transition from the doors to the A-pillar, see Figure 1, and correct if necessary by adjusting the doors in the y-direction.
2. Check outside mirror cover for parallelism and correct seating, see Figure 2, and adjust if necessary.
3. Check rib on mirror triangle seal for kinks as per arrows, see Figure 3, and replace if necessary.
4. Cut insulation to a length of 30 mm and attach to waistline trim strip at front on left and right according to the circles, see Figure 3 and Figure 4.
5. Perform a test drive. If the noise level is unchanged, continue with step 6.

#### MODEL 205.0/1/2, 253.9

6. Using suitable adhesive tape, cover the joints in the area of the front doors, outside mirrors, windshield and engine hood, see example in Figure 5, Figure 6 and Figure 7. Perform a test drive.
7. If the noise level is unchanged, install front side windows with code 851 (Acoustics package).

Note: Document conversion of front side windows in VeDoc in FO Texts field.

Attachments	
File	Description
<a href="#">Bild 1.JPG</a>	Picture 1

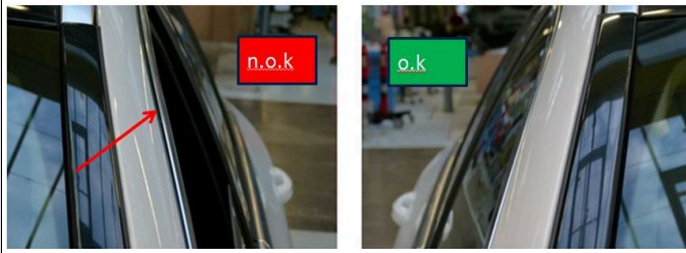


Bild 2.JPG

Picture 2



Bild 3.JPG

Picture 3

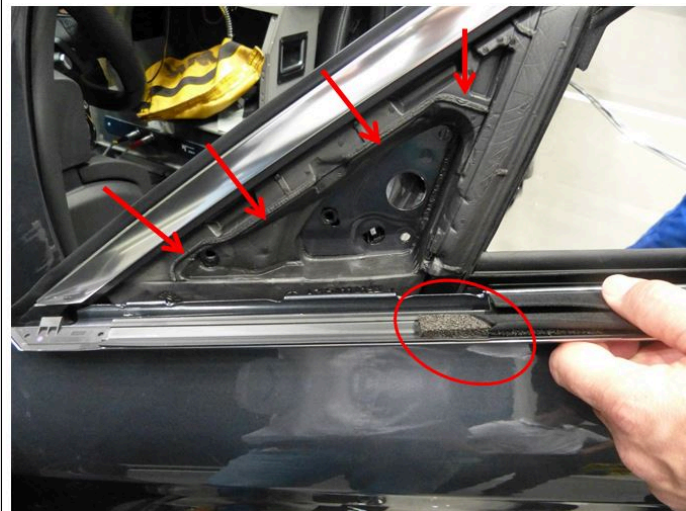


Bild 5.JPG

Picture 5



Bild 6.JPG

Picture 6



Bild 7.JPG

Picture 7

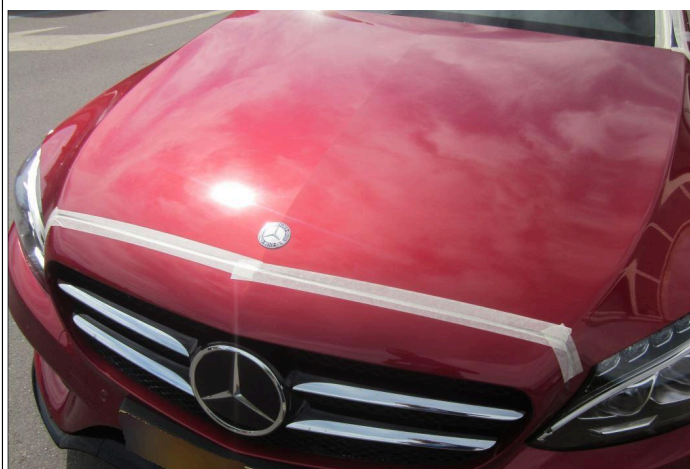
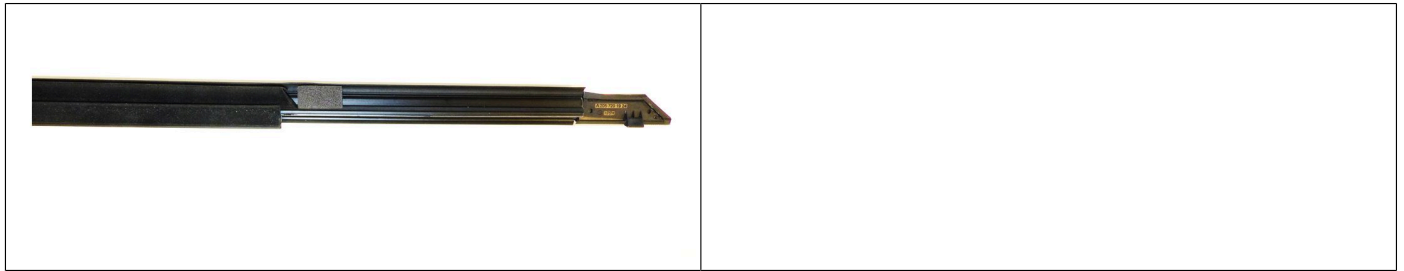


Bild 4.JPG

Picture 4



## WIS-References

Document number	Title	Note
AR72.10-P-1900LW	Remove/install crank window in front door	

## Disclaimer

NOTE: The information contained in this document is intended for use by trained, professional technicians with the knowledge to properly and safely perform diagnosis and repairs on Mercedes-Benz vehicles, using Mercedes-Benz approved tools and equipment. It informs service technicians about conditions that could occur in certain vehicles and provides information that could assist in proper vehicle diagnosis, service, or repair. It does not indicate that a defect is present in any vehicle referenced in this document nor does it imply warranty coverage. DO NOT assume that a symptom or condition, or a described cause of a symptom or condition, affects any particular vehicle or groups of vehicles, or that a described repair applies to any particular vehicle or groups of vehicles. There can be multiple causes resulting in the same or similar symptoms or conditions described in this document, and trained professional service technicians must use their diagnostic skills to make evaluations on a case-by-case basis. The information contained in this document does not guarantee warranty coverage nor does it extend the vehicle's warranty in any way.

## Symptoms

Body > Door/Flap > Door > Door > Wind noises

## Parts

Part number	ES1	ES2	Designation	Quantity	Note	EPC
A2057252300			Left door side window	1	MODEL 205.0/1/2: Up to production date: F 02.08.2016	X
A2057251800			Right door side window	1	MODEL 205.0/1/2: Up to production date: F 02.08.2016	X
A2057372100			Insulation	2		X
A2537255900			Left door side window	1	MODEL 253.9: Up to production date: L 31.01.2016 (CKD) Up to production date: F 30.01.2016	X
A2537256000			Right door side window	1	MODEL 253.9: Up to production date: L 31.01.2016 (CKD) Up to production date: F 30.01.2016	X
A2057256300			Left door side window	1	205.0/1/2: As of production date: F 02.08.2016	X
A2057256400			Right door side window	1	205.0/1/2: As of production date: F 02.08.2016	X

## Operation numbers/damage codes

# XENTRY Tips

---

Op. no.	Operation text	Time	Damage code	Note
			72A0139	
			72N0139	