

## Throttle lift-off clunking noises at drive shafts of rear axle

Topic number	LI35.30-P-058566
Version	7
Function group	35.30 - Final drive, drive shafts
Date	1/15/25
Validity	Mercedes Benz cars and SUVs as of manufacture year 1996
	On model 203, 209, 171 as of approx. week 21/04 coated as standard with Molykote paint
Reason for change	Validity adjusted

### Complaint

Single throttle lift-off clunking noise from the side shaft when moving off (audible at the outboard end). The noise is heard once in each instance when changing direction of travel.

Note: Sound file in attachment

Attachments	
File	Description
Beanstandung Lastwechselknacken.mp3	Sound recording of complaint

### Cause

If the complaint is eliminated by experimentally loosening the outboard collar nut (by 1 turn), the problem is due to cracking of the microweld between the wheel bearing inner race and the joint housing of the side shaft.

Note: The collar nut must always be replaced after being loosened.

See also LI33.20-P-078406

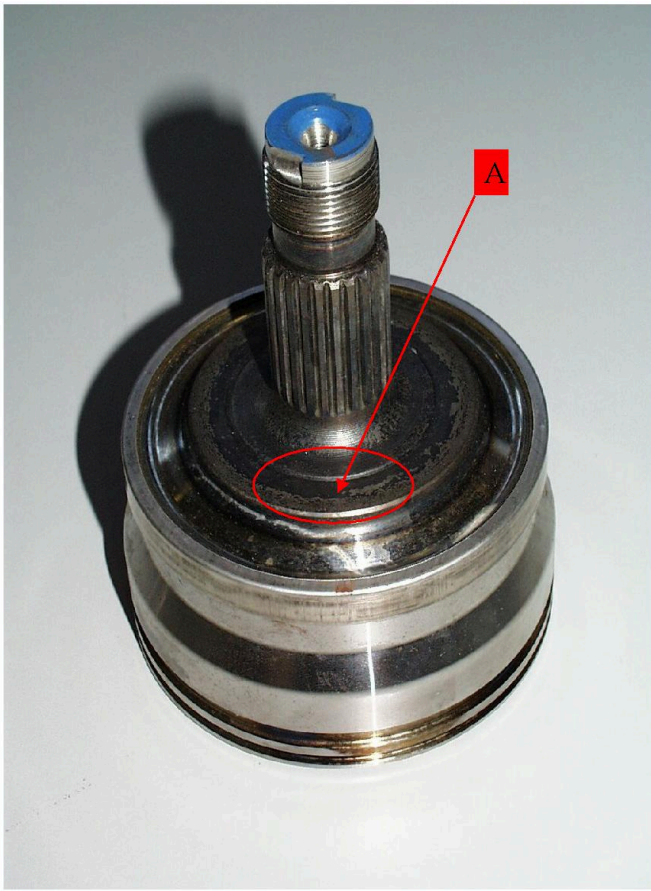
### Remedy

Coat contact surface of side shaft with wheel bearing with Molykote paint. To do this, proceed as follows:

1. Remove side shafts
2. Clean contact surface A (see image file in attachment "Outer joint housing before") before coating with Molykote, using "spirit" (free of dust and grease)
3. Coat contact surface A (see image file in attachment "Outer joint housing after") with Molykote and leave to dry for "one hour" in removed condition
4. Reinstall side shafts

Note: Before using the antifriction coating (Molykote), stir it or shake it thoroughly for (at least 1 minute).

Attachments	
File	Description
<a href="#">Gelenkgehäuse aussen vor.jpg</a>	Before coating with Molykote paint



Gelenkgehäuse aussen nach.jpg

After coating with Molykote paint



## Disclaimer

NOTE: The information contained in this document is intended for use by trained, professional technicians with the knowledge to properly and safely perform diagnosis and repairs on Mercedes-Benz vehicles, using Mercedes-Benz approved tools and equipment. It informs service technicians about conditions that could occur in certain vehicles and provides information that could assist in proper vehicle diagnosis, service, or repair. It does not indicate that a defect is present in any vehicle referenced in this document nor does it imply warranty coverage. DO NOT assume that a symptom or condition, or a described cause of a symptom or condition, affects any particular vehicle or groups of vehicles, or that a described repair applies to any particular vehicle or groups of vehicles. There can be multiple causes resulting in the same or similar symptoms or conditions described in this document, and trained professional service technicians must use their diagnostic skills to make evaluations on a case-by-case basis. The information contained in this document does not guarantee warranty coverage nor does it extend the vehicle's warranty in any way.

### Symptoms

Power transmission > Noises > Throttle lift-off clunking noise

Power transmission > Drive shaft > Axle shaft > Noises > Knocking/banging

### Parts

Part number	ES1	ES2	Designation	Quantity	Note	EPC
A0009890152	10		Low-friction paint (Molykote)	1		X

### Operation numbers/damage codes

# XENTRY Tips

---

Op. no.	Operation text	Time	Damage code	Note
357230	REMOVE/INSTALL BOTH REAR AXLE SHAFTS		35S0234	
357230	REMOVE/INSTALL BOTH REAR AXLE SHAFTS		35D0234	