



# TECHNICAL SERVICE BULLETIN

<b>ISSUE DATE:</b>	09/07/2023
<b>SERVICE BULLETIN SUBJECT:</b>	PP-1 Back Pressure Hadley Retrofit
<b>VINs or MODELS AFFECTED:</b>	Service Specified Buses
<b>COMPLETE BY:</b>	Next Service Opportunity
<b>SERVICE BULLETIN #:</b>	SC-23-158
<b>LABOR OPERATION CODE:</b>	BV47Z

**NOTICE! It is expected that this process may require up to 1 hour per bus. Please schedule appropriately to minimize vehicle downtime.**

## PP-1 Back Pressure Hadley Retrofit

### Description:

The procedure describes the process of installing a redesigned air circuit that completely separates the ride height system from the parking brake system to eliminate the possibility of unintentional application of the parking brake while kneeling.

## Tools/Parts Required:

### Tools and Supplies Required:

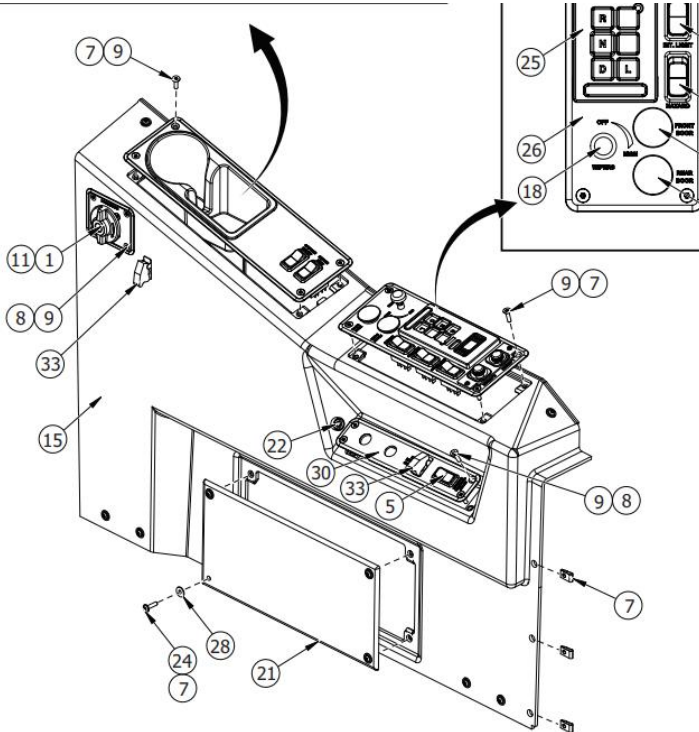
Side Cutting Pliers	
Tubing Cutter	
Combination Wrench Set	
Loctite 567	

### Kit Parts Required:

063380	PP-1 BACK PRESSURE CORRECTION KIT, HARDWARE	
044348	MUFFLER, 1/2 MPT	1 EA
043377	CABLE TIE, MOUNT, FIR TREE W/ CABLE TIE ASSY	1 EA
063379	1/2"NPT FEMALE x 3/8" NPT MALE ADAPTOR	1 EA
003801	FITTING, PTC, BRASS, 3/8" MNPT, 3/8" OD TUBE	1 EA
129-2251	FITTING, PTC, BRASS, 3/8" MNPT, 3/8" OD TUBE	1 EA

## Procedure:

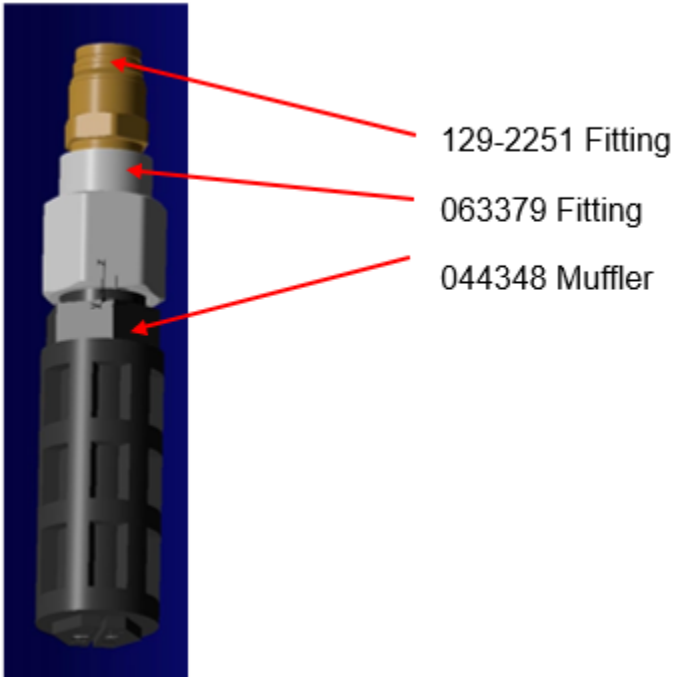
1. Use the Proterra approved Lockout/Tagout procedure to make the bus safe for work.
2. Using a T-30 Torx Driver, remove the panel in front of the front air plate (Item 21). Gain access to the hardware by sliding the driver seat forward and rear.



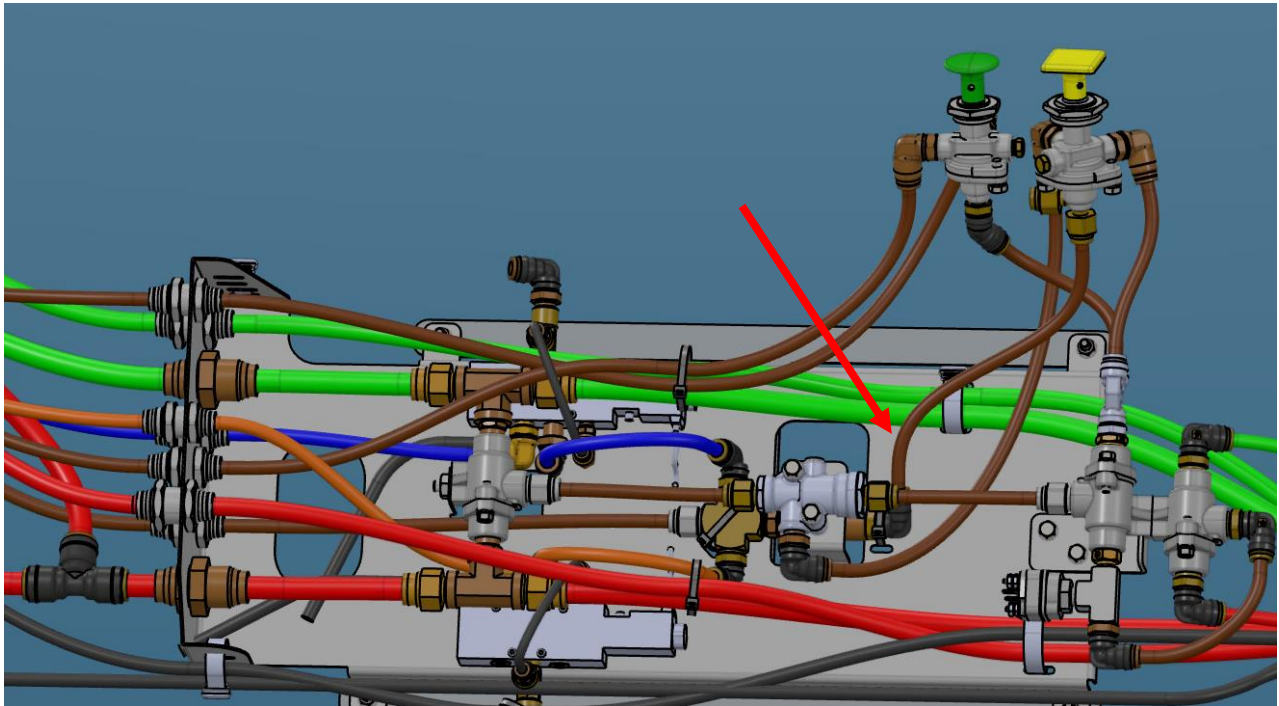
3. Disconnect the brown 3/8.-inch air line from the check valve shown in the following illustration. Install the Plug (003801) into the check valve as shown in the following illustration.



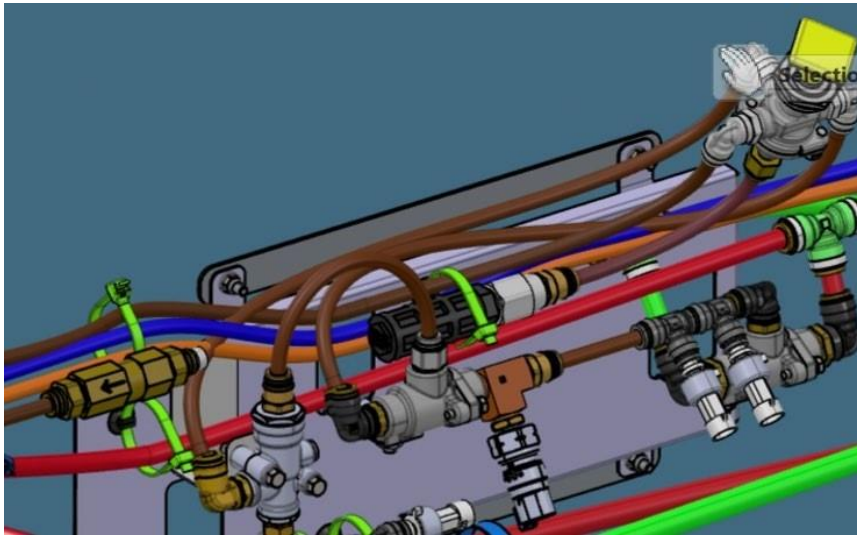
4. Assemble the parts as shown in the following illustration. Use Loctite 567 on the tapered threads.



5. Using a Tubing Cutter, cut four inches from the 3/8-inch air line that was disconnected from the check valve.



6. Install the assembled fittings and muffler onto the air line



7. Secure the Muffler (044348) using a Cable Tie (043377)
8. Remove the Lockout/Tagout devices and power the bus on.
9. Allow the compressor to reach its set point.
10. Using a Spray Bottle with Soapy Water, spray the fitting and look for air bubbles that indicate leaks.
11. If leaks are found, tighten the fittings until no leaks are observed.
12. Power off the bus and reinstall the Lockout/Tagout devices.
13. Reinstall the access panel and driver's seat.
14. Remove the Lockout/Tagout devices and return the bus to service.