



# FLEET CHECK

<b>Subject</b>	DuoPower DC Link Fleet Check
<b>Issue Date</b>	12/05/2024
<b>Service Bulletin Number</b>	SC-24-020
<b>Models Affected</b>	Service Specified Vehicles
<b>Complete By</b>	Next Service Opportunity
<b>Labor Operation Code</b>	PE50
<b>Description</b>	Visual inspection of the DC Link cables located on top of the DP axle to ensure all split blocks and swivel bundle spacers are installed.

Labor Table				
	Operation	Technicians	Hours	Labor Time (T x H)
1	Steps 1-8	1	.65	.65 Hours
	WO Closure and Documentation		.10	.10 Hours
		<b>Total Labor Time:</b>		.75 Hours

Contact the Field Service Team with any questions related to the following procedure.



**Parts Required:**

			Qty.	UOM
		None		EA
				EA
				EA
				EA
				EA
				EA
			Qty.	UOM

**Tools Required:**

---

- Inspection Mirror
- Jack Stands



---

**Overview:**

Document to show how to inspect the DC Link cables that are installed on top the DuoPower Axle. Inspecting the routing and cable management below the bus.

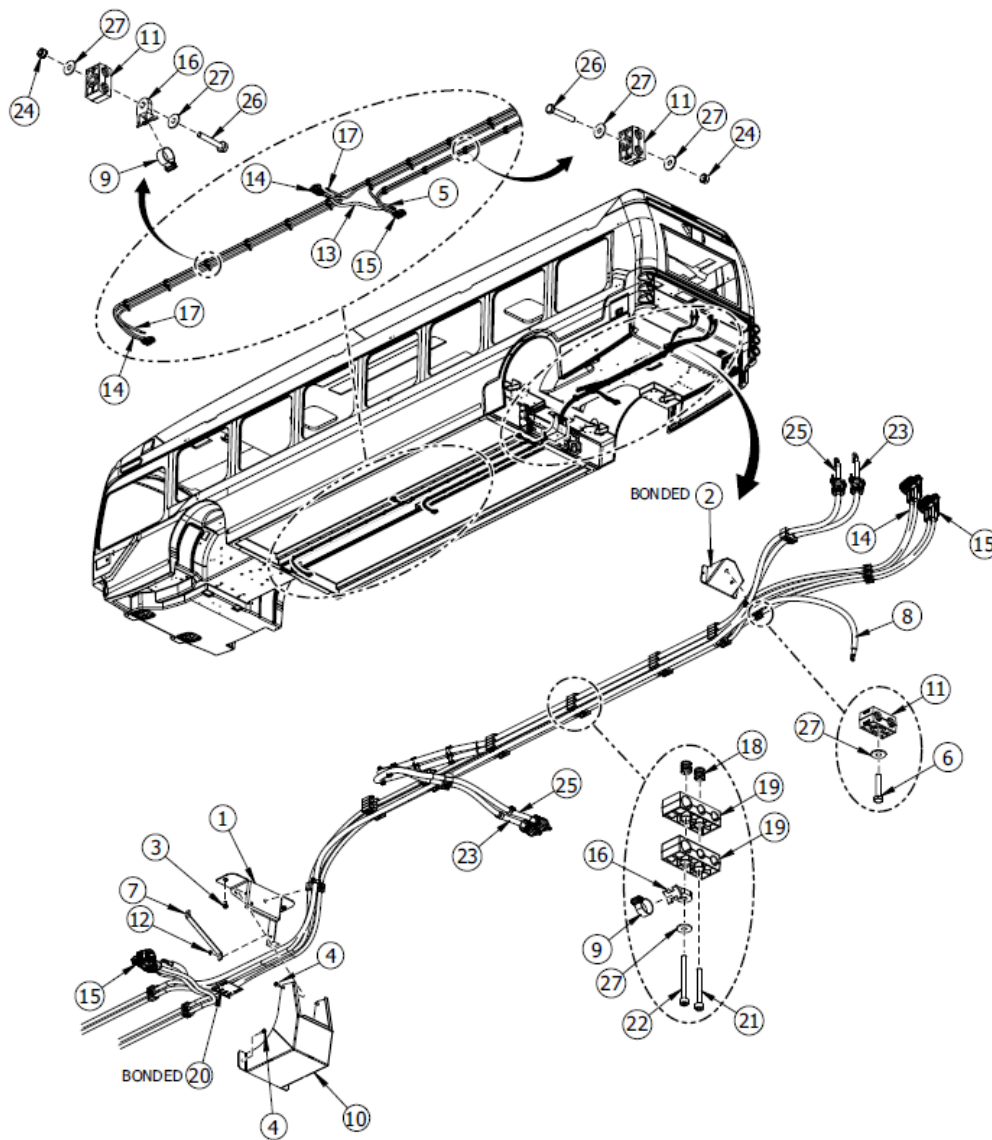
---

**Step 1:**

Raise the vehicle's ride height to maximum height.

Turn off the vehicle at rear master disconnecter switch as well as the battery saver switch on select ZX5s.

---



---

**Step 2:**

Install 4 low jack stands at each of the jacking point of the vehicle to support the vehicle if the ride height were to lose pressure.

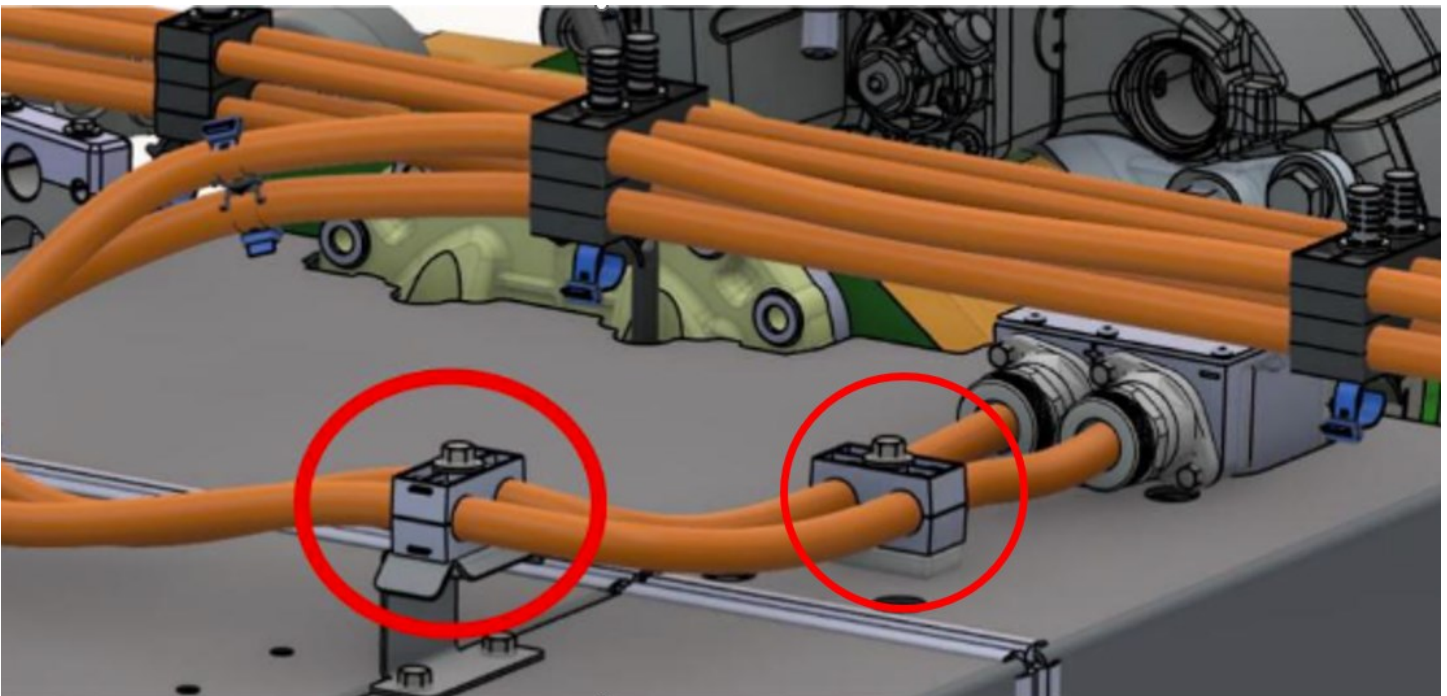
---

**Step 3:**

Over the top of the rear wheels using a inspection mirror or cell phone you will be able to see the top of the axle.

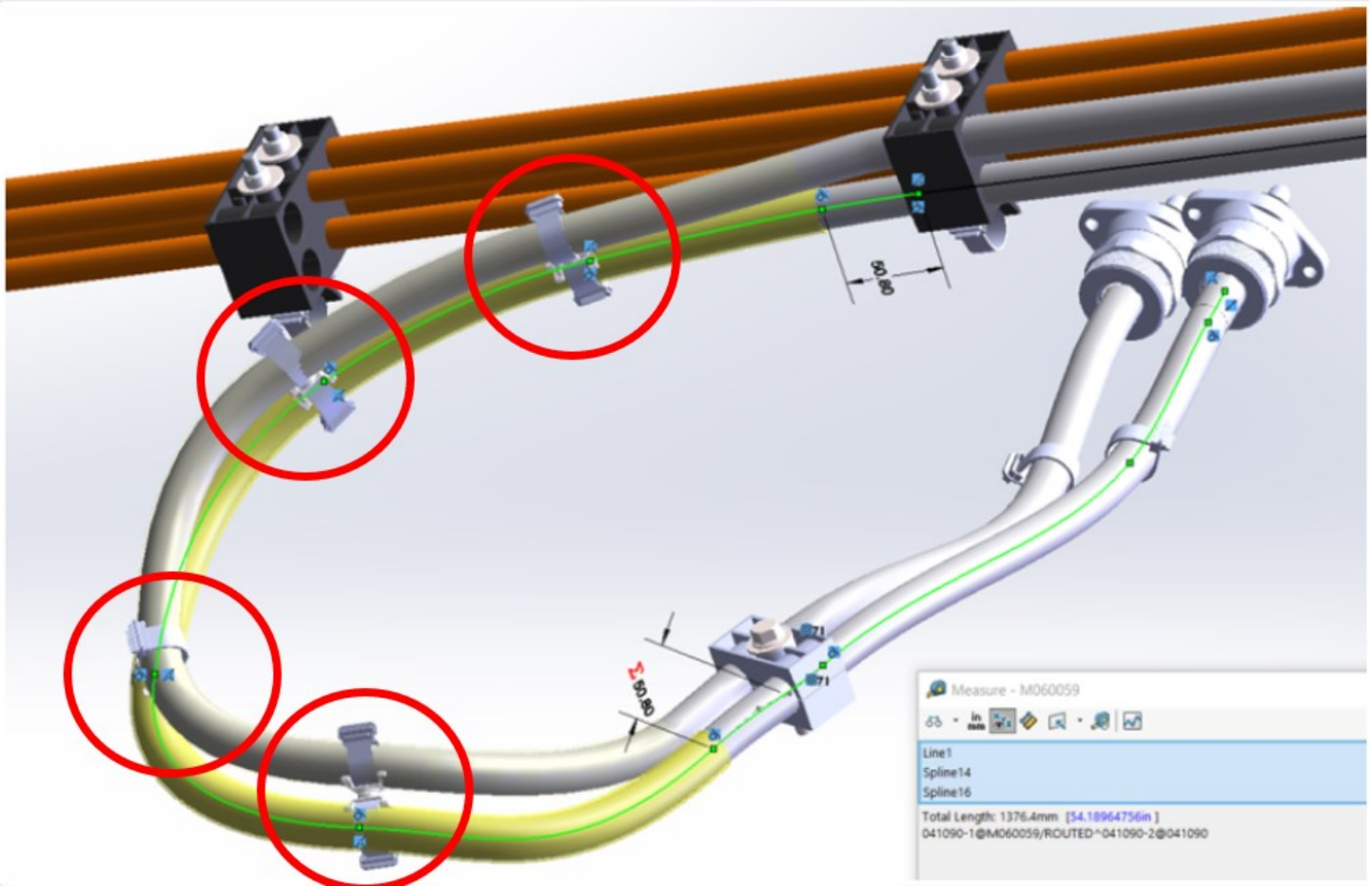
**Step 4:**

Inspect the 2 split blocks that are mounted to the splash guards. Ensuring they are installed and retaining the cables. You might have to switch between streetside and curbside to get the full picture.



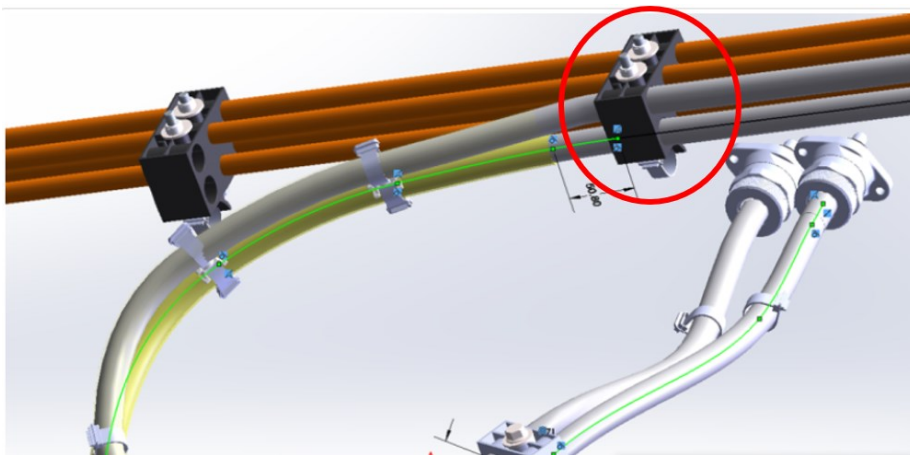
**Step 5:**

Inspect the 4 Swivel bundles to be installed circled below. The Swivel bundles should be holding both the positive and negative cables secured together.



**Step 6:**

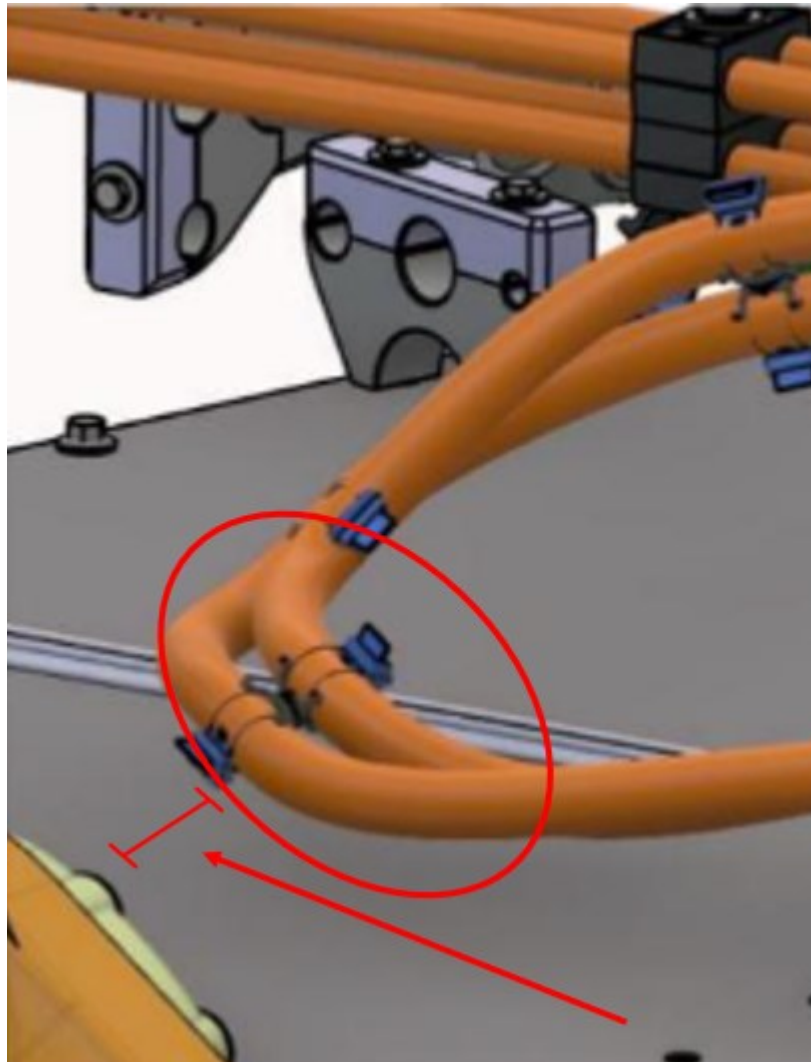
Inspect the 6 position split block to be installed securing the DC Link Cables.



---

**Step 7:**

Inspect the HV cable path to ensure it is not contacting the top of the transmission or brakes. Then inspect the cable for any insulation damages.



---

**Step 8:**

If any of these steps fail, please clearly document the findings in the ServiceMax Work Order attachments. And promptly escalate the Work Order to the PSE Team.

If no issues are found remove the jack stands and return the vehicle to service.