



# TECHNICAL SERVICE BULLETIN

Classification:

EM23-002B

Reference:

NTB23-064B

Date:

January 8, 2025

## ENGINE COOLANT SERVICE PROCEDURE

This bulletin has been amended. See **AMENDMENT HISTORY** on the last page.  
Please discard previous versions of this bulletin.

**APPLIED VEHICLES:** 2021-2025 Rogue (T33)

**APPLIED ENGINES:** KR15DDT

### SERVICE INFORMATION

When draining and refilling the vehicle's coolant for any reason, refer to the updated Electronic Service Manual (ESM) service procedure starting on page 2 of this bulletin to ensure that all air pockets have been completely purged.

When refilling the cooling system, use Genuine Nissan BLUE LONG LIFE ANTIFREEZE or its equivalent, mixed with water that is distilled or demineralized.

- This amended procedure will be added to the ESM in a future update to the following ESM section: **ENGINE > ENGINE COOLING SYSTEM > KR15DDT > PERIODIC MAINTENANCE > ENGINE COOLANT > Refilling**

**IMPORTANT:** The following information under step 5 on page 3 will be added to the ESM.

- If not using CONSULT, turn on cabin heater switch.
- Open the ENGINE COOLANT BYPASS VALVE by using CONSULT WORK SUPPORT function.
  - Refer to : ENGINE - ENGINE CONTROL SYSTEM - KR15DDT - SYSTEM DESCRIPTION - DIAGNOSIS SYSTEM (ECM) - DIAGNOSIS DESCRIPTION - CONSULT Function)

### NOTICE

Do not use additives, such as water leak preventive, since they may cause cooling waterway blockages.

Bulletins are intended for use by qualified technicians, not 'do-it-yourselfers'. Qualified technicians are properly trained individuals who have the equipment, tools, safety instruction, and know-how to do a job properly and safely. **NOTE:** If you believe that a described condition may apply to a particular vehicle, DO NOT assume that it does. See your Nissan dealer to determine if this applies to your vehicle.

# Refilling

## CAUTION:

Do not put additive such as water leak preventive, since it may cause cooling waterway clogging.

When refilling use Genuine NISSAN Long Life Antifreeze/Coolant (blue) or equivalent in its quality mixed with water (distilled or demineralized). Refer to Fluids and Lubricants.



## NOTE:

This procedure is for engine cooling system. For procedures involving charge air cooler system, refer to Refilling.

1 Install reservoir tank if removed and radiator drain cock.

## CAUTION:

Be sure to clean drain cock and install with new O-ring.

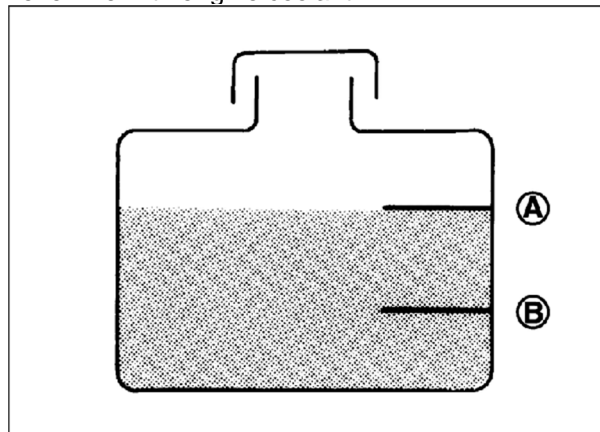
Radiator drain cock

: Refer to Exploded View.

- If water drain plugs on cylinder block are removed, close and tighten them. Refer to [Setting](#).

2 Check that each hose clamp has been firmly tightened.

3 Refill reservoir tank to "MAX" level line with engine coolant.



RPR-001724612-02-PBIA0102ZZ

A	: MAX
B	: MIN

Reservoir tank engine coolant capacity

(At "MAX" level)

Refer to Periodical Maintenance Specification.

4 Install reservoir tank cap.

5 Warm up engine until opening thermostat. Standard for warming-up time is approximately 10 minutes at 3,000 rpm.

- If not using CONSULT, turn on cabin heater switch.
- Open the ENGINE COOLANT BYPASS VALVE by using CONSULT WORK SUPPORT function.
  - Refer to : ENGINE - ENGINE CONTROL SYSTEM - KR15DDT - SYSTEM DESCRIPTION - DIAGNOSIS SYSTEM (ECM) - DIAGNOSIS DESCRIPTION - CONSULT Function)
- Check thermostat opening condition by touching radiator hose (lower) to see a flow of warm water.

**CAUTION:**

**Watch water temperature gauge so as not to overheat engine.**

**Never remove the reservoir tank cap if the drive engine is hot. Hot coolant may spout out from the radiator, causing serious injury.**

6 Stop the engine and cool down to less than approximately 50°C (122°F).

- Cool down using fan to reduce the time.

**CAUTION:**

**Never adhere the engine coolant to electronic equipment (alternator etc.).**

7 Refill reservoir tank to “MAX” level line with engine coolant.

8 Repeat steps 3 through 7 two or more times with radiator cap installed until engine coolant level no longer drops.

9 Check cooling system for leakage with engine running.

10 Warm up the engine, and check for sound of engine coolant flow while running engine from idle up to 3,000 rpm with heater temperature controller set at several position between “COOL” and “WARM”.

- Sound may be noticeable at heater unit.

11 Repeat step 10 three times.

12 If sound is heard, bleed air from cooling system by repeating step 3 through 8 until reservoir tank level no longer drops.

## PARTS INFORMATION

DESCRIPTION	PART NUMBER	QUANTITY
BLUE LONG LIFE ANTIFREEZE (1)	999MPL25500P	As needed

- (1) Order this item through the Nissan Maintenance Advantage program: Phone 877-NIS-NMA1 (877-647-6621). Website order via link on the dealer portal; [www.NNA.net](http://www.NNA.net) and click on the "Maintenance Advantage-Tire/Battery/Chemical" link.

## AMENDMENT HISTORY

PUBLISHED DATE	REFERENCE	DESCRIPTION
August 8, 2023	NTB23-064	Original bulletin published
December 6, 2024	NTB23-064A	Amended to change title, <b>APPLIED VEHICLES</b> , information on page 1 and include updated Electronic Service Manual information
January 8, 2025	NTB23-064B	Amended to correct incorrect step references in steps 8 and 11.