



# TECHNICAL SERVICE BULLETIN

Classification: DA21-003B	Reference: NTB21-040B	Date: January 21, 2025
------------------------------	--------------------------	---------------------------

## DTCS B2740-87, B2744-87, AND/OR B274D-87 STORED

This bulletin has been amended. See **AMENDMENT HISTORY** on the last page.  
Please discard previous versions of this bulletin.

**APPLIED VEHICLES:** 2021 Rogue (T33)  
**APPLIED DATES:** 11th character of VIN is W – Built on or before October 19, 2021  
11th character of VIN is C – Built on or before March 8, 2021

### IF YOU CONFIRM

Any of the following DTCs are stored:

- B2740-87 (TCU)
- B2744-87 (BCM)
- B274D-87 (Combination Meter)

### ACTION

Follow the **SERVICE PROCEDURE** to reprogram the Sonar Control Unit, if applicable.

**IMPORTANT:** The purpose of ACTION (above) is to give you a quick idea of the work you will be performing. You **MUST** closely follow the entire **SERVICE PROCEDURE** as it contains information that is essential to successfully completing this repair.

Nissan Bulletins are intended for use by qualified technicians, not 'do-it-yourselfers'. Qualified technicians are properly trained individuals who have the equipment, tools, safety instruction, and know-how to do a job properly and safely. **NOTE:** If you believe that a described condition may apply to a particular vehicle, **DO NOT** assume that it does. See your Nissan dealer to determine if this applies to your vehicle.

## SERVICE PROCEDURE

### Sonar Control Unit Reprogramming

**IMPORTANT:** Before starting, make sure:

- ASSIST on the CONSULT PC has been synchronized (updated) to the current date.
- All C-III plus software updates (if any) have been installed.
- The CONSULT PC is connected to the internet via a cable or Wi-Fi.
  - In the procedure, you will be required to enter your username and password.
  - The CONSULT PC must be connected to the internet.
  - If you do not know your username and password, contact your service manager.
- A screen print for warranty documentation can be done from the C-III plus during this service procedure while still connected to the vehicle.
- No Diagnostic Trouble Codes (DTCs) are stored.
  - Use C-III plus to perform Self Diagnosis for all systems.
  - If there are any DTCs, other than **B2740-87**, **B2744-87** and/or **B274D-87**, diagnose, perform repairs, and erase DTCs **before** continuing.

1. Connect the VI to the vehicle.

#### **NOTICE**

Make sure the VI is securely connected. If the VI connection is loose during reprogramming, the process will be interrupted and the control unit may be damaged.

2. Connect the AC Adapter to the CONSULT PC.

#### **NOTICE**

Be sure to connect the AC Adapter. If the CONSULT PC battery voltage drops during reprogramming, the process will be interrupted and the control unit may be damaged.

3. Connect a battery maintainer/smart charger set to reflash mode or a similar setting.

#### **NOTICE**

To avoid damage to the control unit, ensure a battery maintainer or smart charger is connected. The battery voltage must be between 12.0V and 13.5V during reprogramming.

4. Turn OFF all external Bluetooth® devices (e.g., cell phones, printers, etc.) within range of the CONSULT PC and VI.

**NOTICE**

Make sure to turn OFF all external Bluetooth® devices. If Bluetooth® signal waves are within range of the CONSULT PC and the VI during reprogramming, reprogramming may be interrupted and the control unit may be damaged.

5. Turn the ignition ON with the engine OFF.

**NOTICE**

To avoid damage to the control unit, the engine must not start or run during the reprogramming procedure.

6. Turn OFF all vehicle electrical loads such as exterior lights, interior lights, HVAC, blower, rear defogger, audio, NAVI, seat heater, steering wheel heater, etc.

7. Turn ON the hazard warning lamps.

8. Turn ON the CONSULT PC.

9. Start C-III plus.

10. If prompted, select **USA/CANADA Dealers** from the drop down menu, and then select **OK**.

11. Login using your NNAnet credentials.

**IMPORTANT:** If not prompted to enter your username and password, the CONSULT PC may not be connected to Wi-Fi. Close C-III plus, confirm the CONSULT PC is connected to Wi-Fi, and then reopen C-III plus.

12. Wait for the VI to be recognized (Figure 1 on page 4).

- The serial number will display when the VI is recognized.

13. Select **Diagnosis (One System)**.

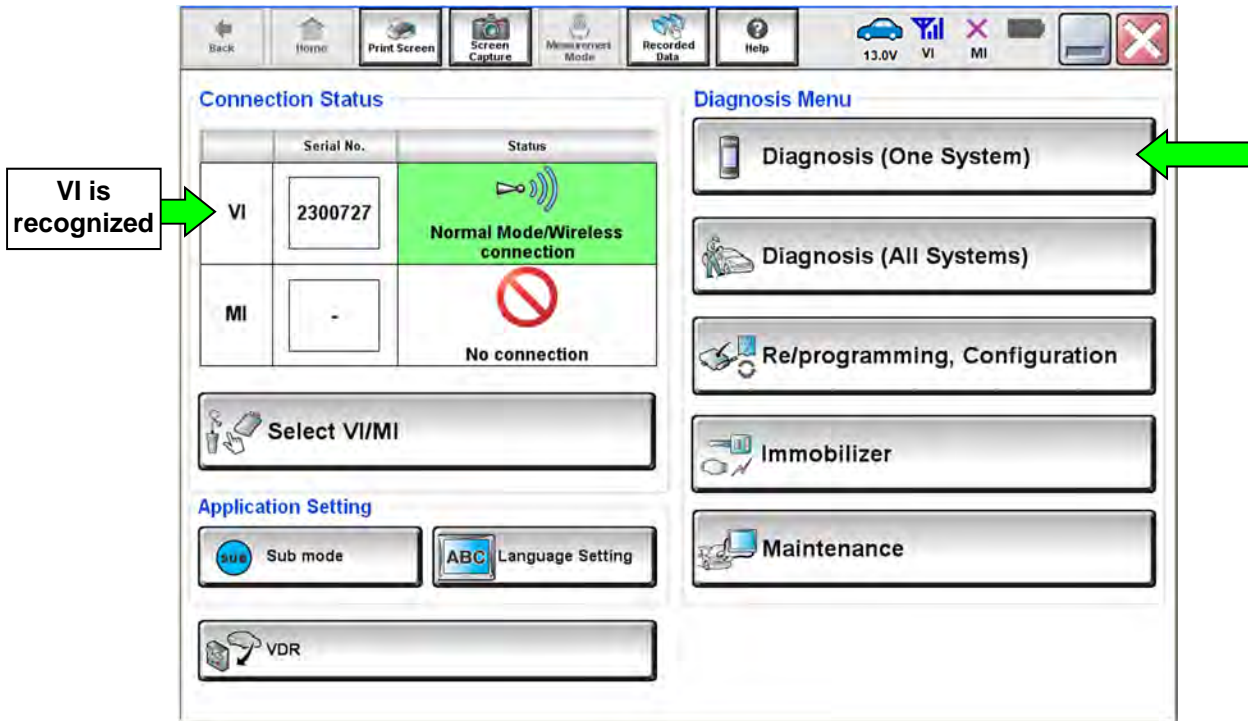


Figure 1

14. Select **SONAR**.

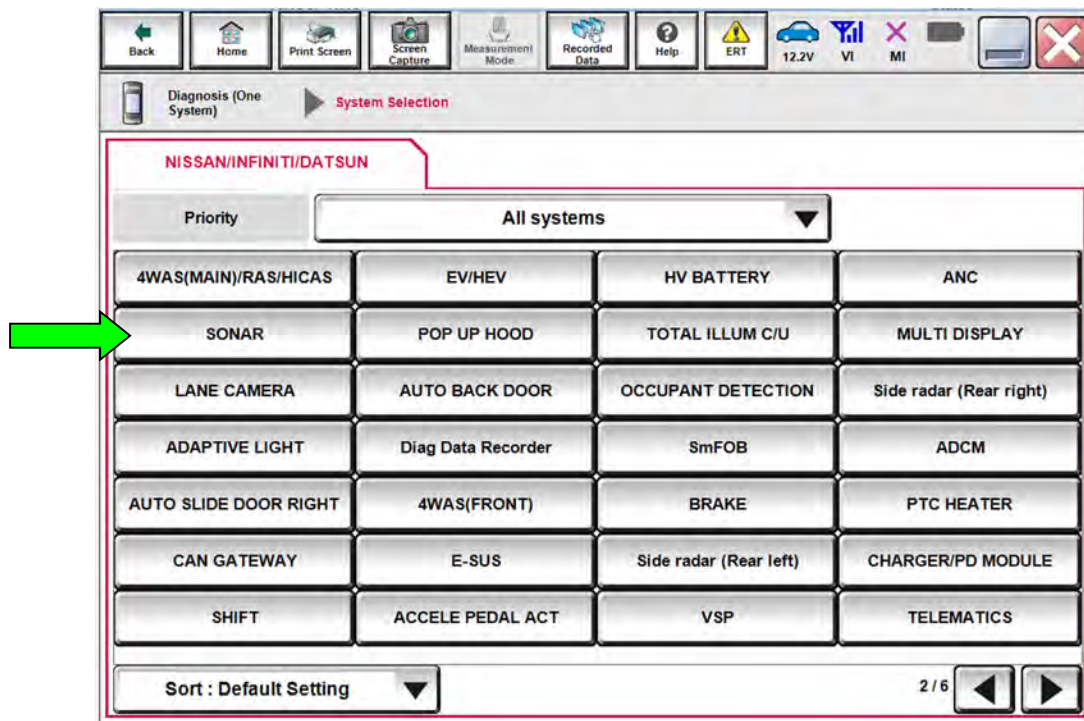


Figure 2

15. Select **ECU Identification**.

- If the **ECU PART NUMBER** is 284S9-1517R, this bulletin does not apply. See the Electronic Service Manual (ESM) for further diagnostic information.
- If the the **ECU PART NUMBER** is not 284S9-1517R, proceed to step 16.

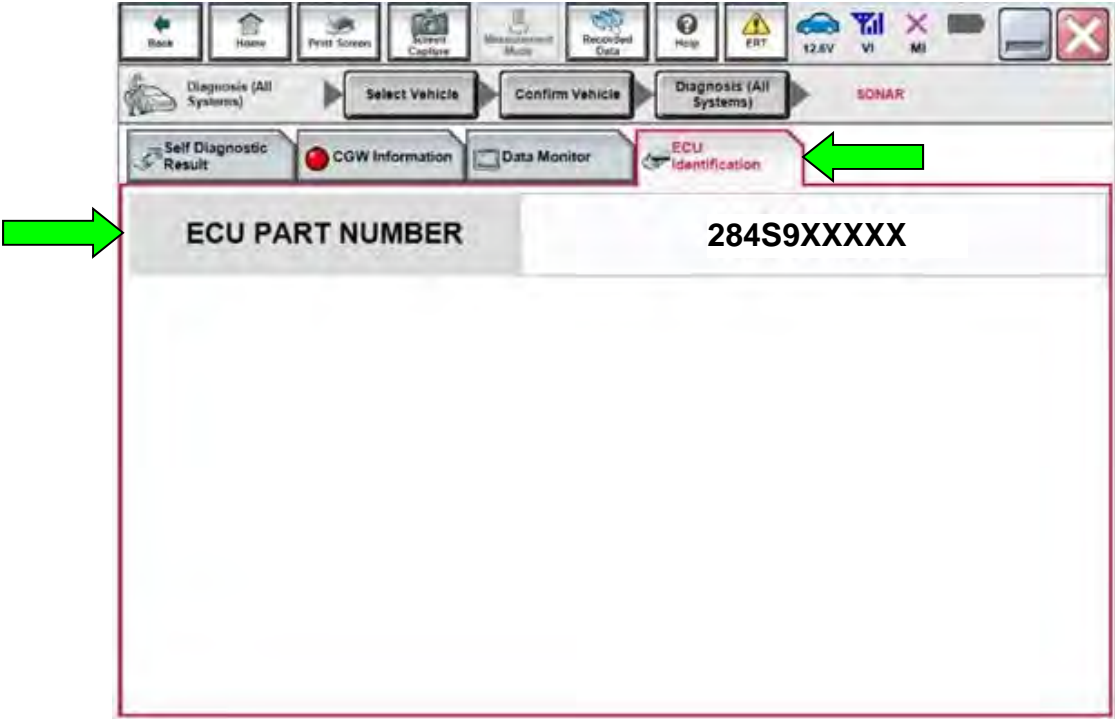


Figure 3

16. Select **Home**.

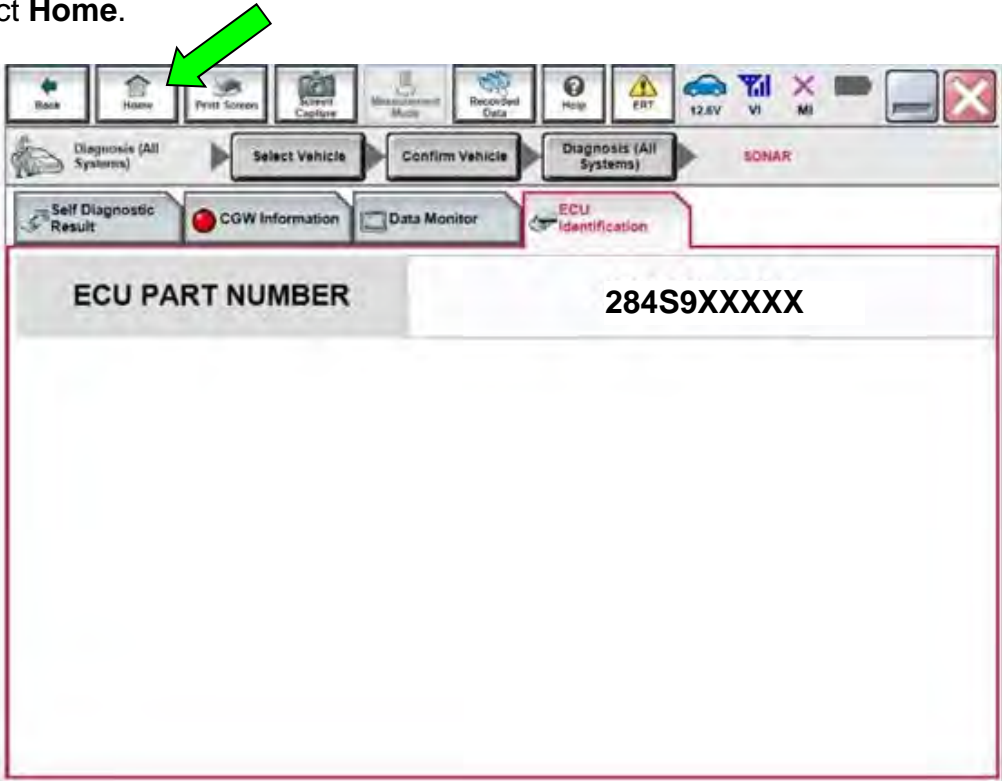


Figure 4

17. Select **Re/programming, Configuration**.

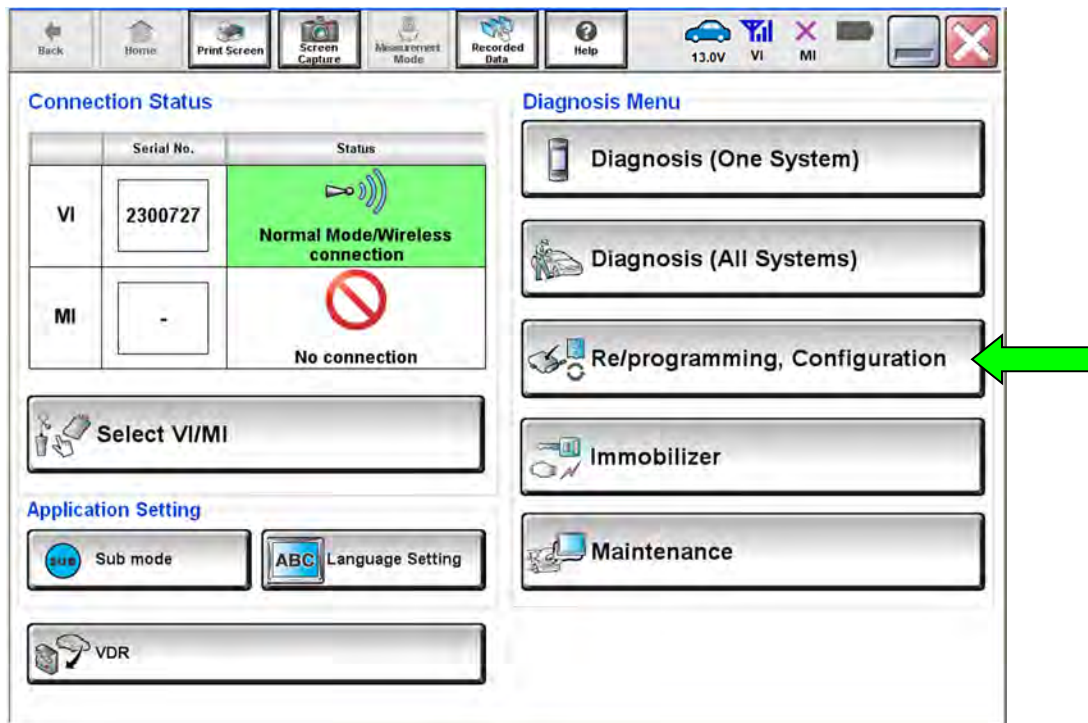


Figure 5

18. Check the box to confirm the precaution instructions have been read, and then select **Next**.

**HINT:** Use the arrows (if needed) to view and read all the precautions.

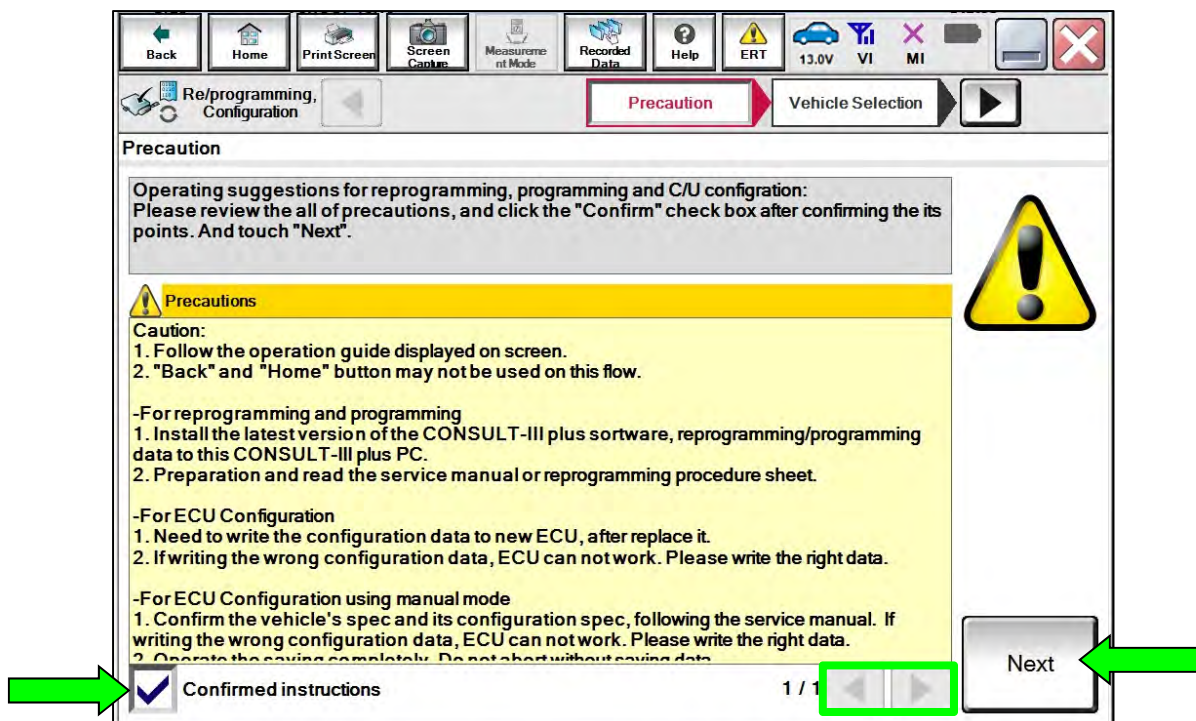


Figure 6

19. Select Automatic Selection(VIN).

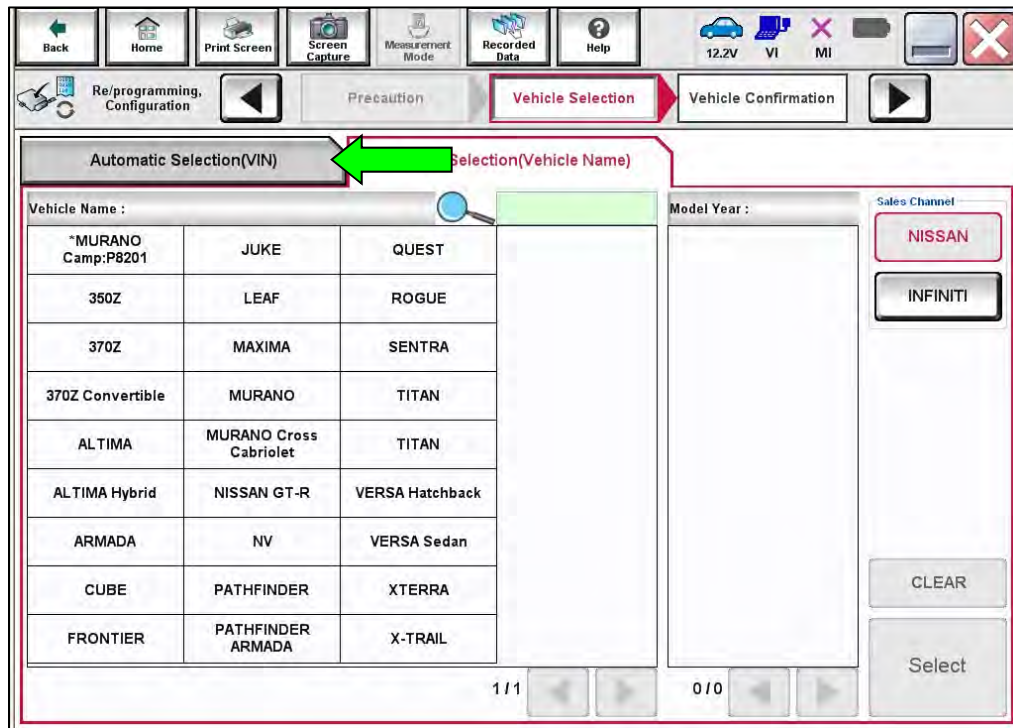


Figure 7

20. Allow C-III plus to perform automatic VIN selection.

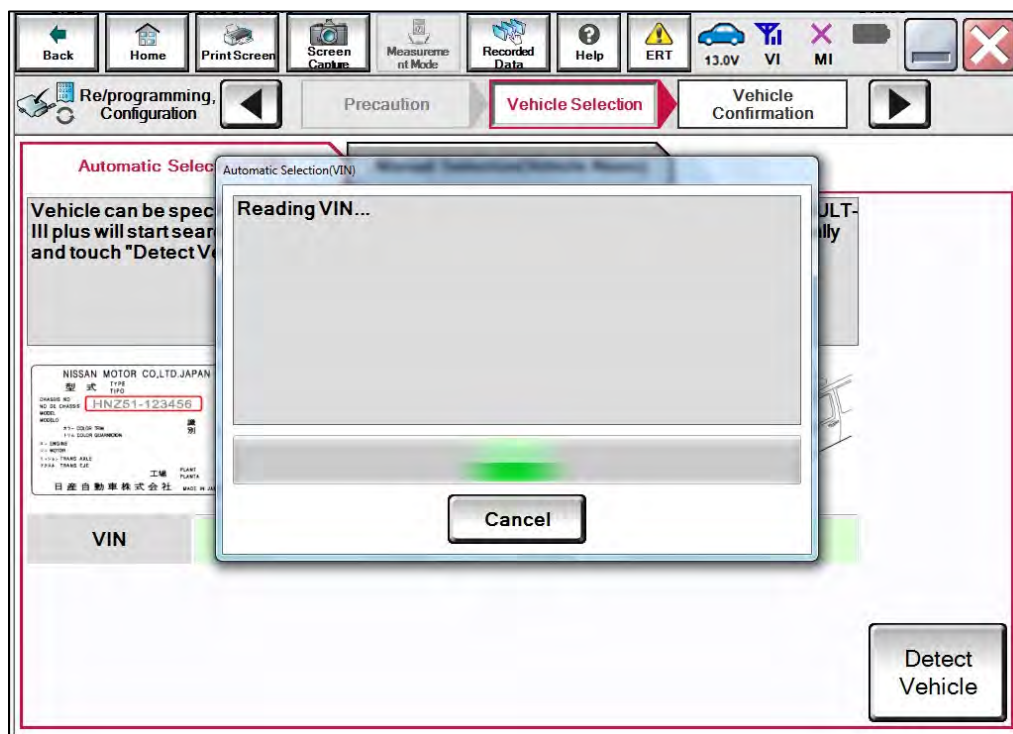


Figure 8

21. Confirm the **VIN or Chassis #** is correct, and then select **Confirm**.

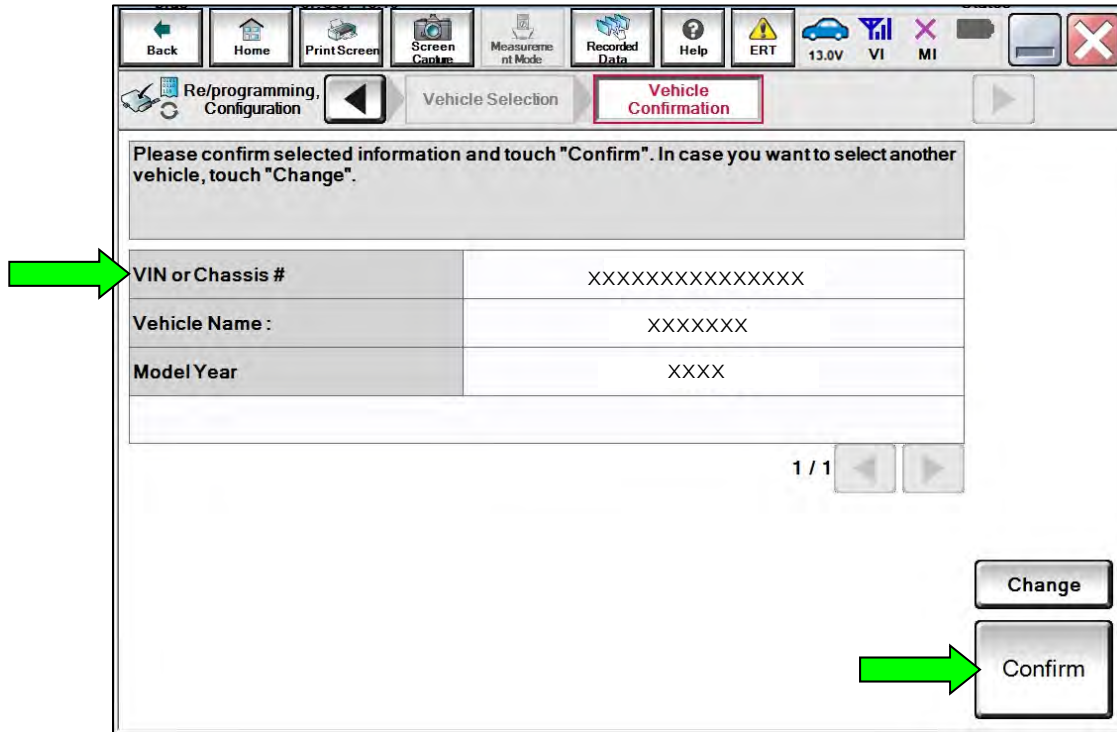


Figure 9

22. Allow the system call to be performed.

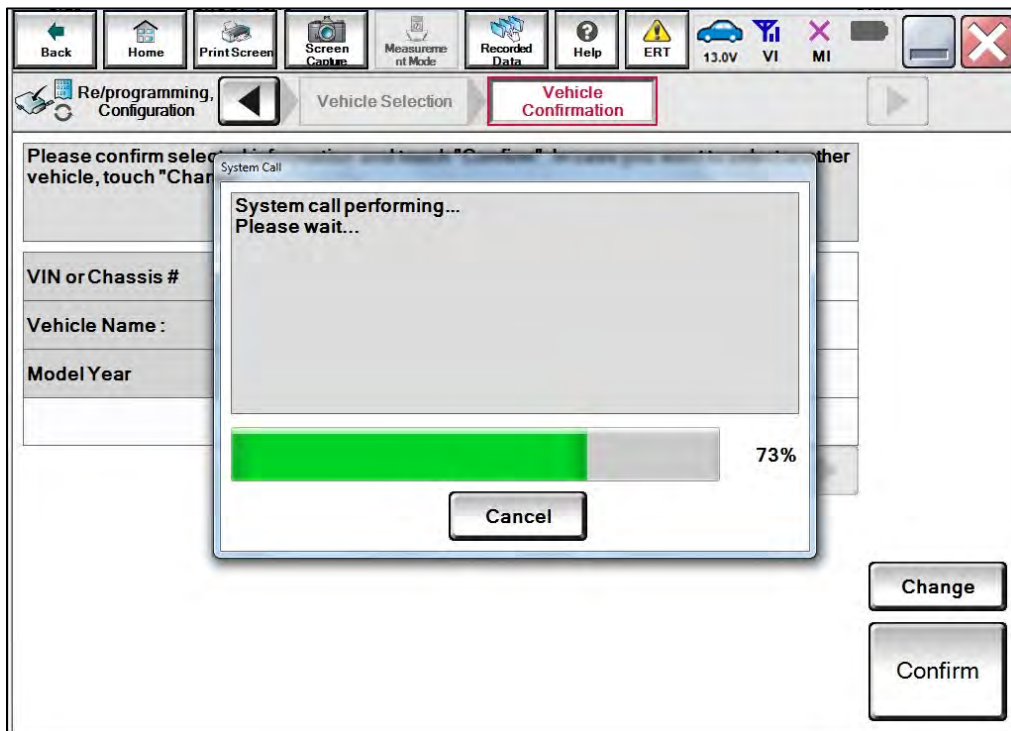


Figure 10

23. Confirm the VIN is correct for the vehicle, and then select **Confirm**.

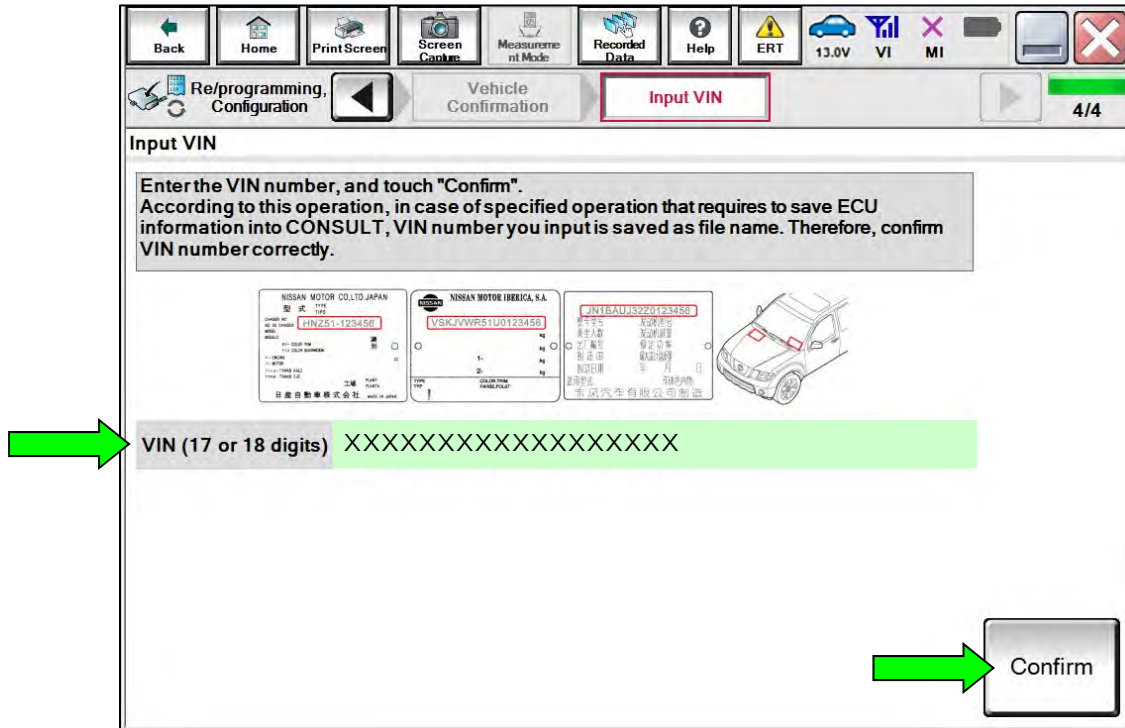


Figure 11

24. Select **SONAR**.

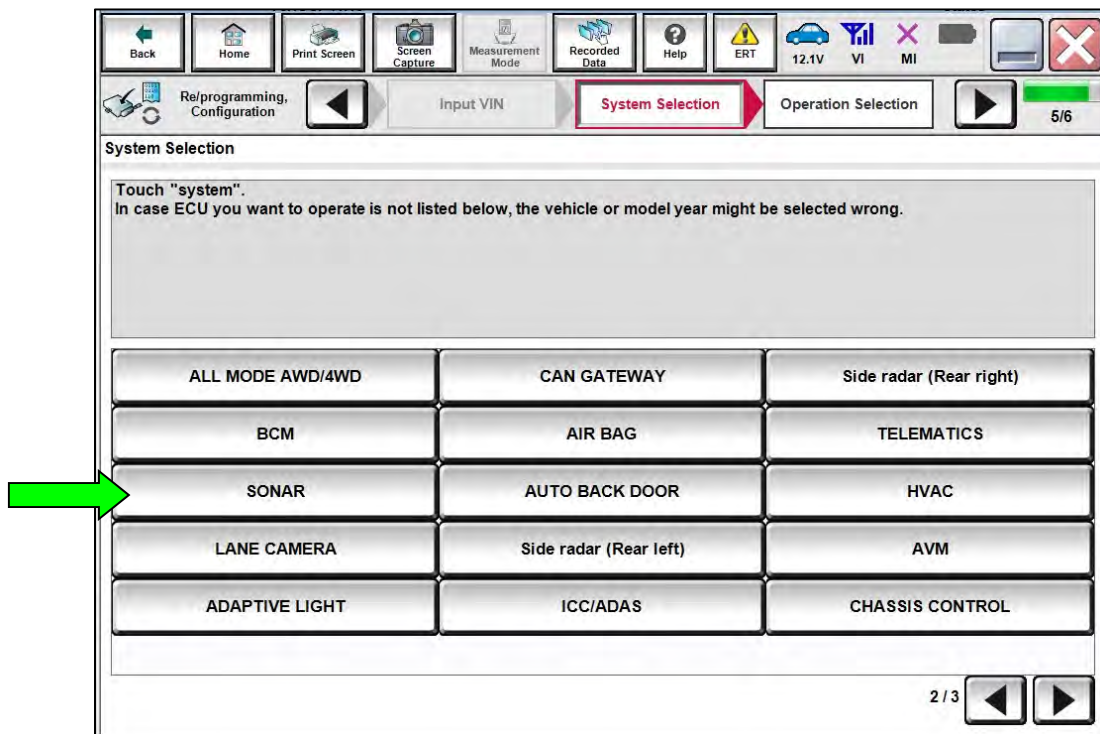


Figure 12

25. Select **Reprogramming**.

**IMPORTANT:** During the reprogramming process, you will receive some errors. These errors are expected. Please follow all of the steps in this procedure to successfully complete the reprogramming process.

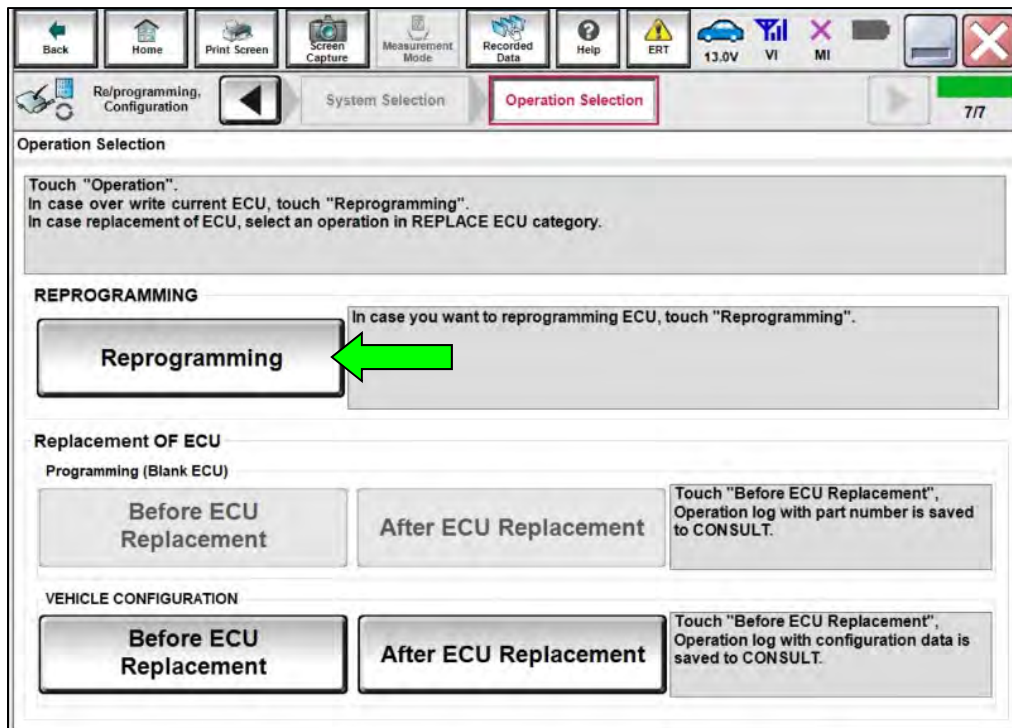


Figure 13

26. When you get to the screen shown in Figure 14, confirm that a reprogram is available as follows:

a. Find the Sonar Control Unit **Part Number** and write it on the repair order.

**HINT:** This is the current part number (P/N).

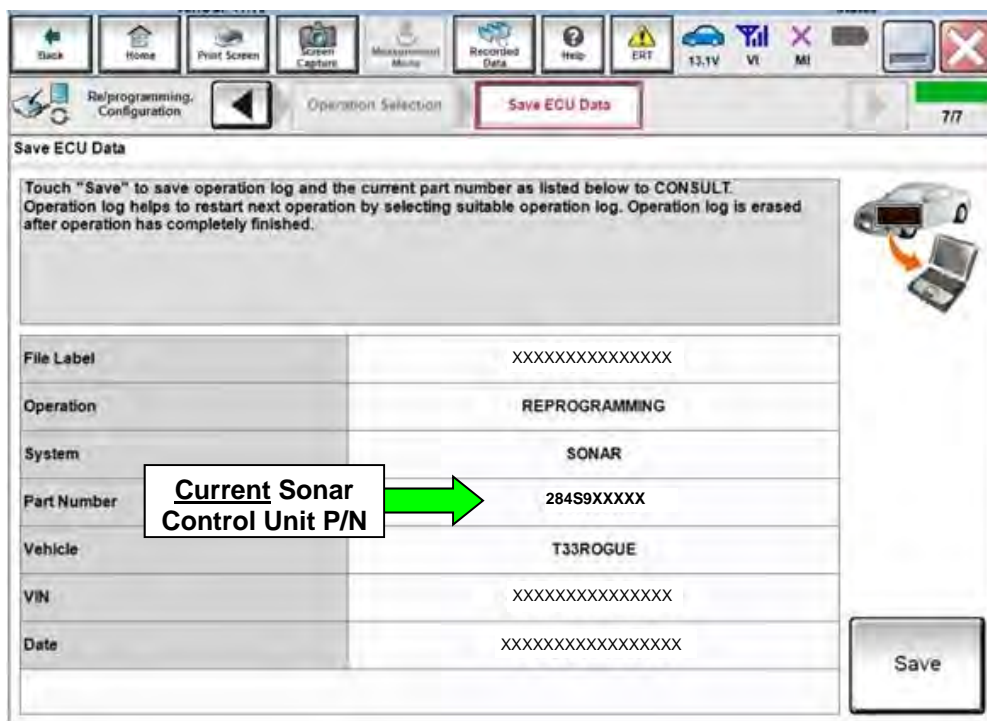


Figure 14

b. Compare the part number you wrote down to the part numbers in **Table A**.

- If there is a match in **Table A**, continue with the reprogramming procedure.
- If there is not a match in **Table A**, this bulletin does not apply. See the ESM for further diagnostic information.

**Table A**

MODEL	YEAR	CURRENT SONAR CONTROL UNIT PART NUMBER: 284S9-
Rogue	2021	5126R, 5559R

27. Follow the on-screen instructions to navigate C-III plus and reprogram the Sonar Control Unit.
28. Select **Save**.

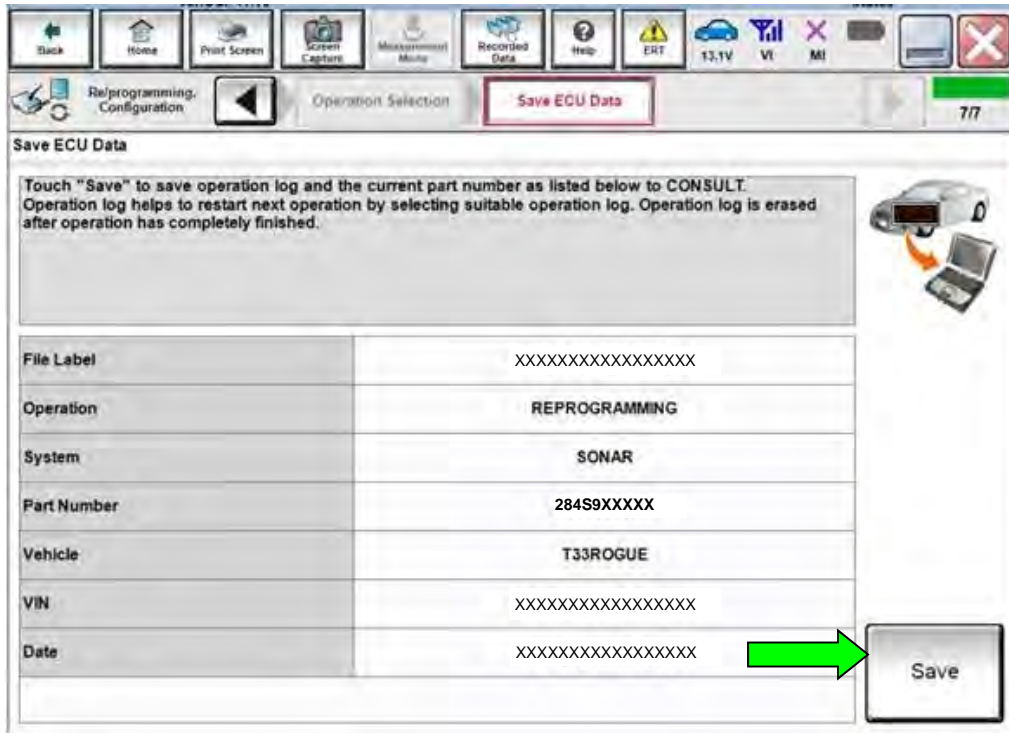


Figure 15

29. Check the box to confirm the precaution instructions have been read, and then select **Next**.

**HINT:** Use the arrows (if needed) to view and read all the precautions.

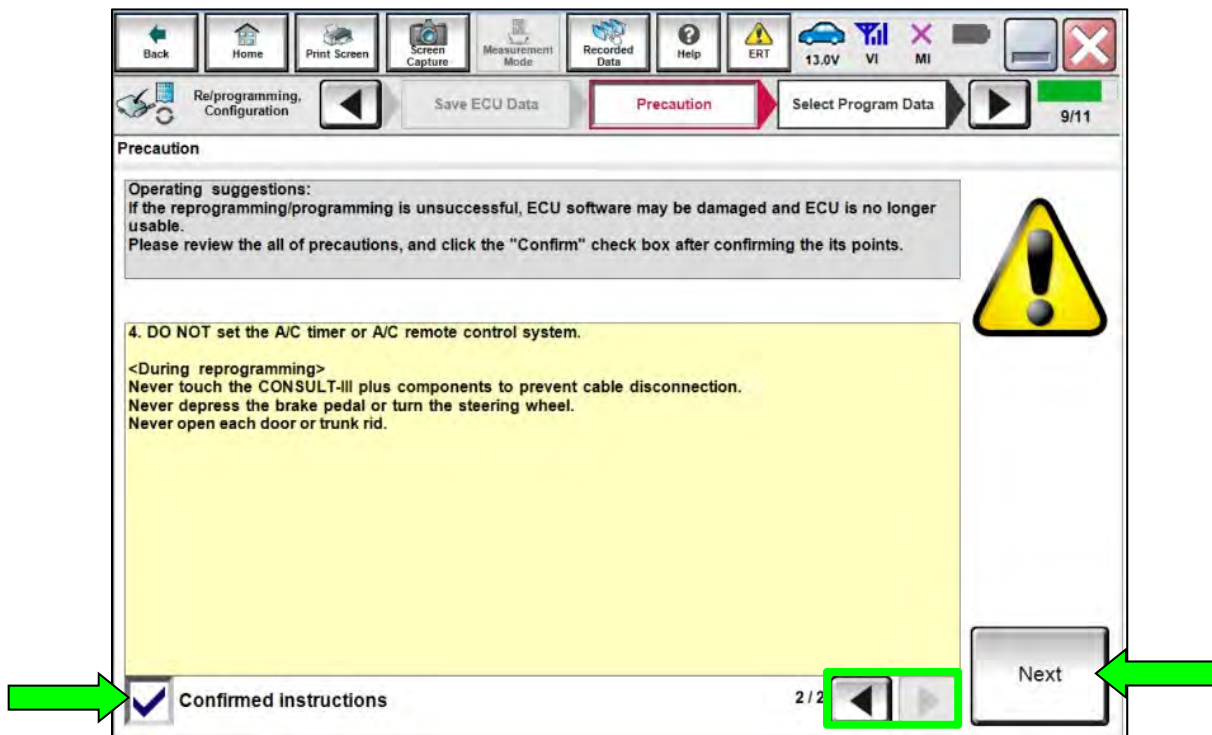


Figure 16

30. If the screen in Figure 17 displays, select **Next**. If the screen in Figure 17 does not display, continue to step 31 on page 14.

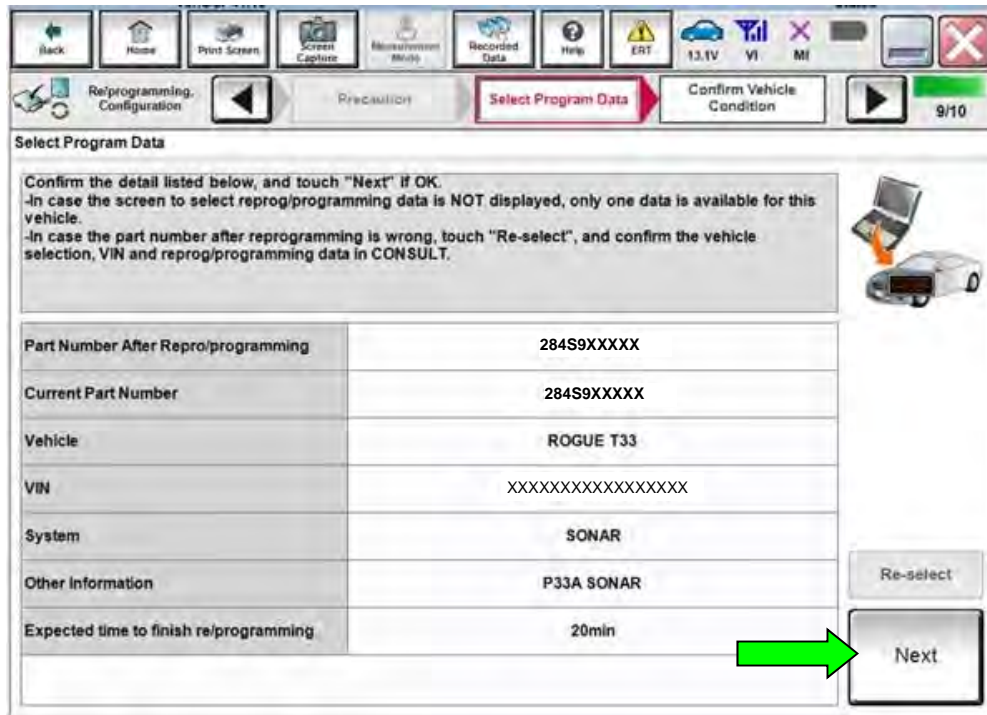


Figure 17

31. In some case, more than one part number for reprogramming is available.
- If the screen in Figure 18 displays, and more than one new part number is available, select and use the reprogramming option that does **not** have the message “Caution! Use ONLY with NTBXX-XXX”.
  - If the screen in Figure 18 displays and it is blank (no reprogramming listed), it means there is no reprogramming available for this vehicle. Close C-III plus and refer back to the ESM for further diagnosis.

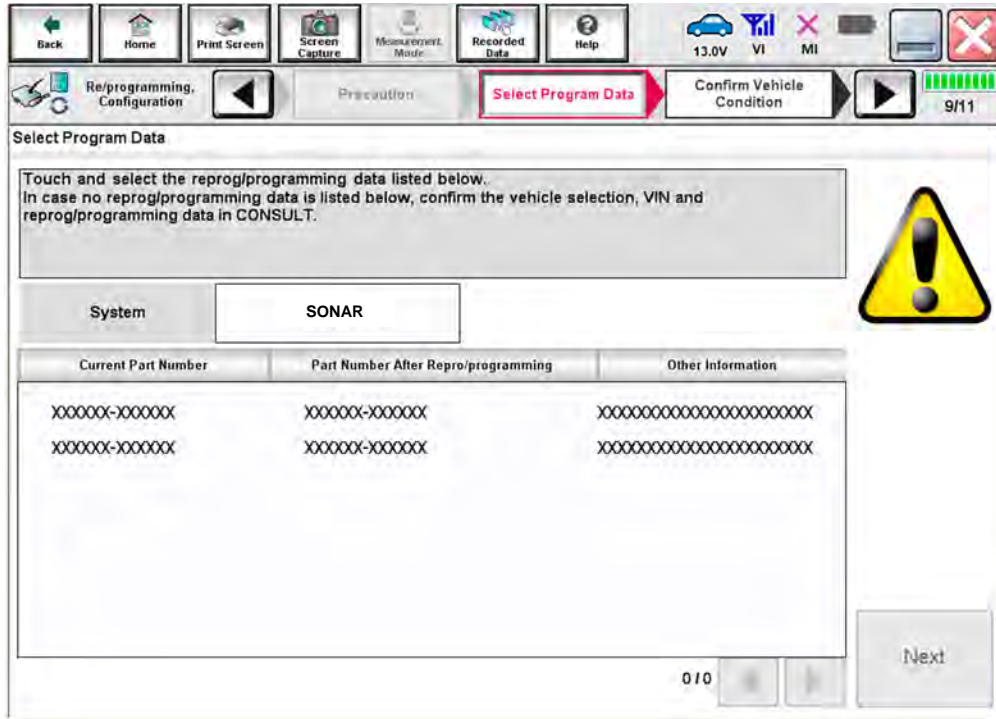


Figure 18

32. Make sure **OK** is highlighted **green** (battery voltage must be between **12.0** and **13.5 Volts**).

**NOTICE**

To avoid damage to the control unit, ensure a battery maintainer/smart charger is connected. The battery voltage must be between 12.0V and 13.5V during reprogramming.

33. Select **Next**.

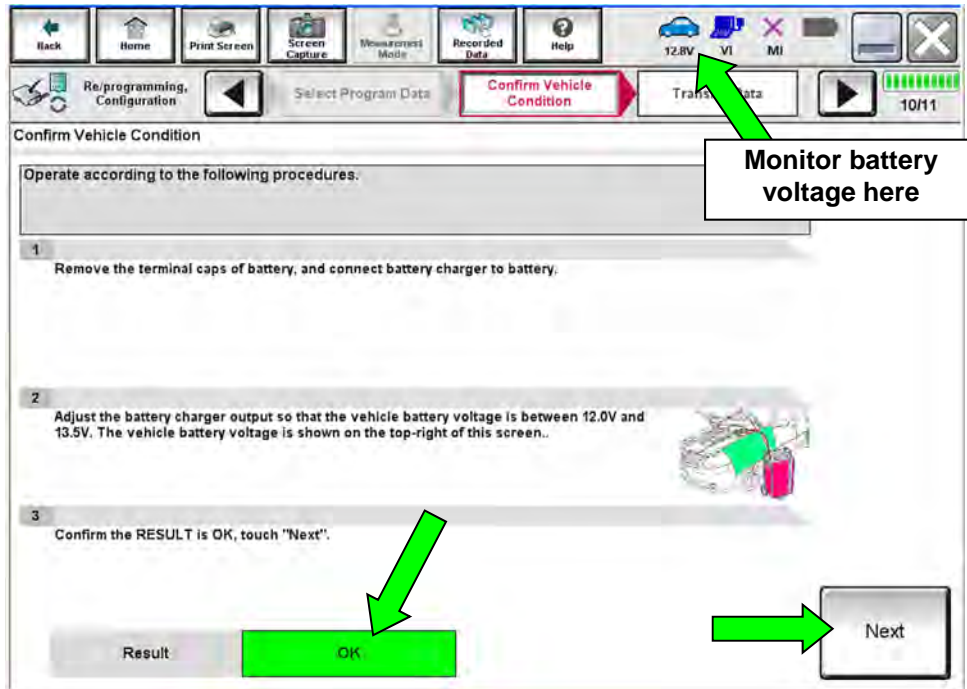


Figure 19

34. Confirm all **Judgment** items are "OK", and then select **Start**.

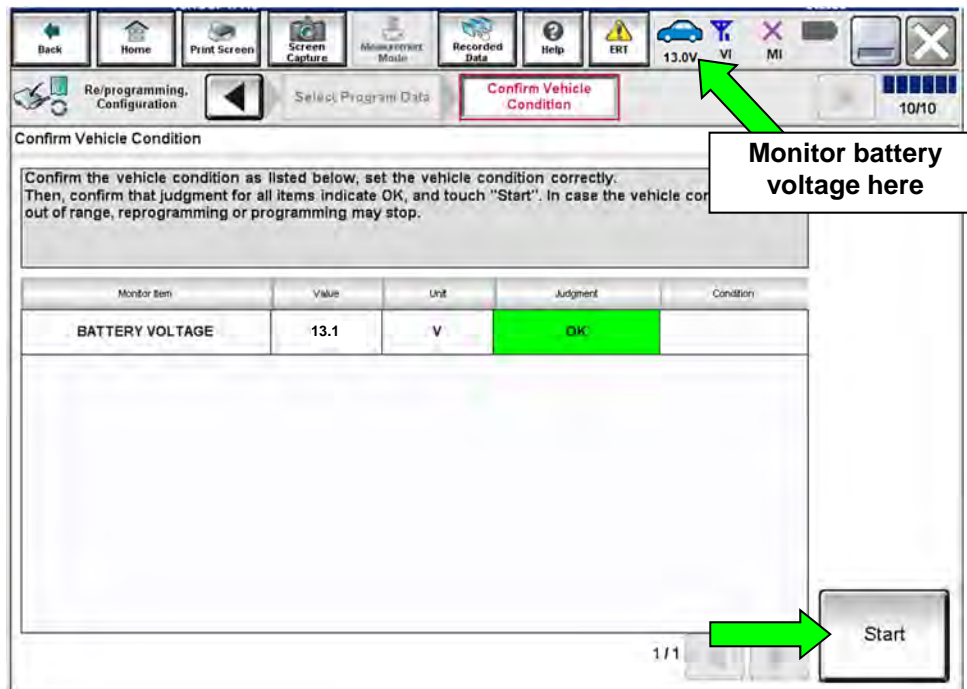


Figure 20

35. Wait for both progress bars to complete.

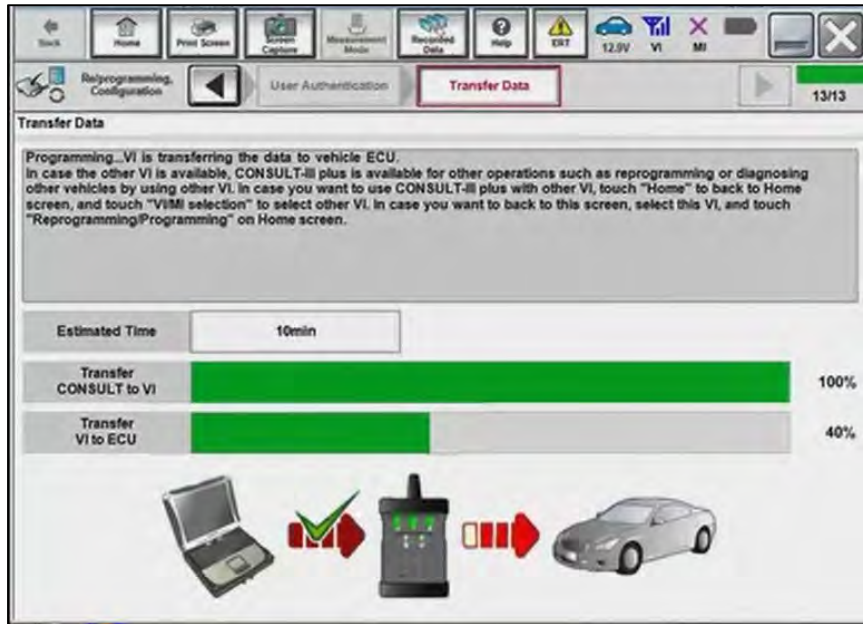


Figure 21

36. When the screen in Figure 22 displays, the reprogramming is complete.

- If the screen in Figure 22 does not display (indicating that reprogramming did not complete), refer to **Sonar Control Unit Recovery** on the next page.

37. Disconnect the battery maintainer or smart charger from the vehicle.

38. Select **Next**.

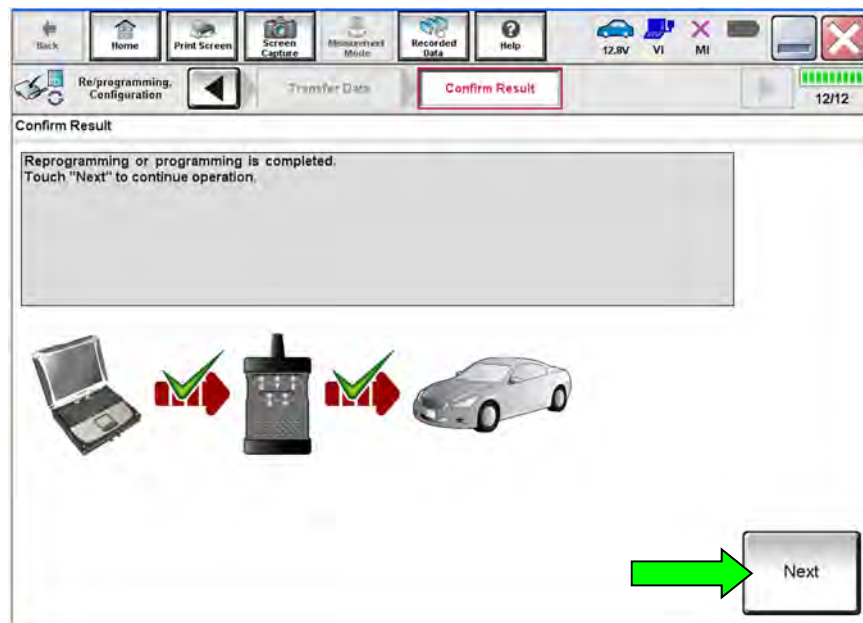


Figure 22

**HINT:** Additional steps/operations are required before C-III plus will provide the final reprogramming confirmation report. Continue with the reprogramming procedure on page 18.

## Sonar Control Unit Recovery

**Do not disconnect the VI or shut down C-III plus if reprogramming does not complete.**

If reprogramming does not complete and the “!?” icon displays as shown in Figure 23:

- Check battery voltage (12.0 - 13.5 V).
- Ignition is ON, engine OFF.
- External Bluetooth® devices are OFF.
- **All electrical loads are OFF.**
- **Select retry and follow the on screen instructions.**
- “Retry” may not go through on first attempt and can be selected more than once.

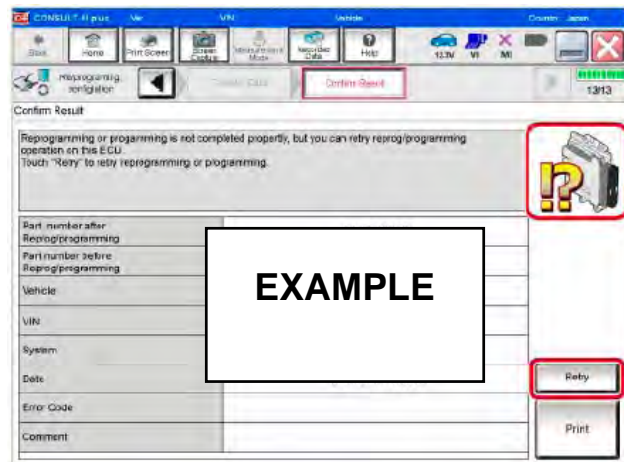


Figure 23

If reprogramming does not complete and the “X” icon displays as shown in Figure 24:

- Check battery voltage (12.0 – 13.5 V).
- CONSULT A/C adapter is plugged in.
- Ignition is ON, engine OFF.
- Transmission is in Park.
- All C-III plus / VI cables are securely connected.
- All C-III plus updates are installed.
- **Select Home, and restart the reprogram procedure from the beginning.**

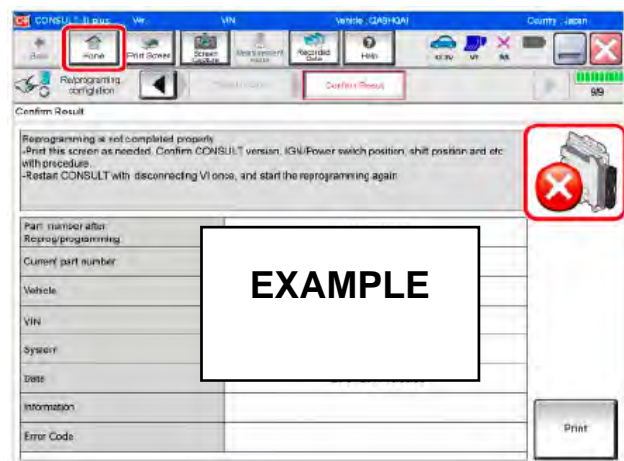


Figure 24

- 39. Erase all DTCs as follows:
  - a. Turn the ignition OFF.
  - b. Turn the ignition ON.

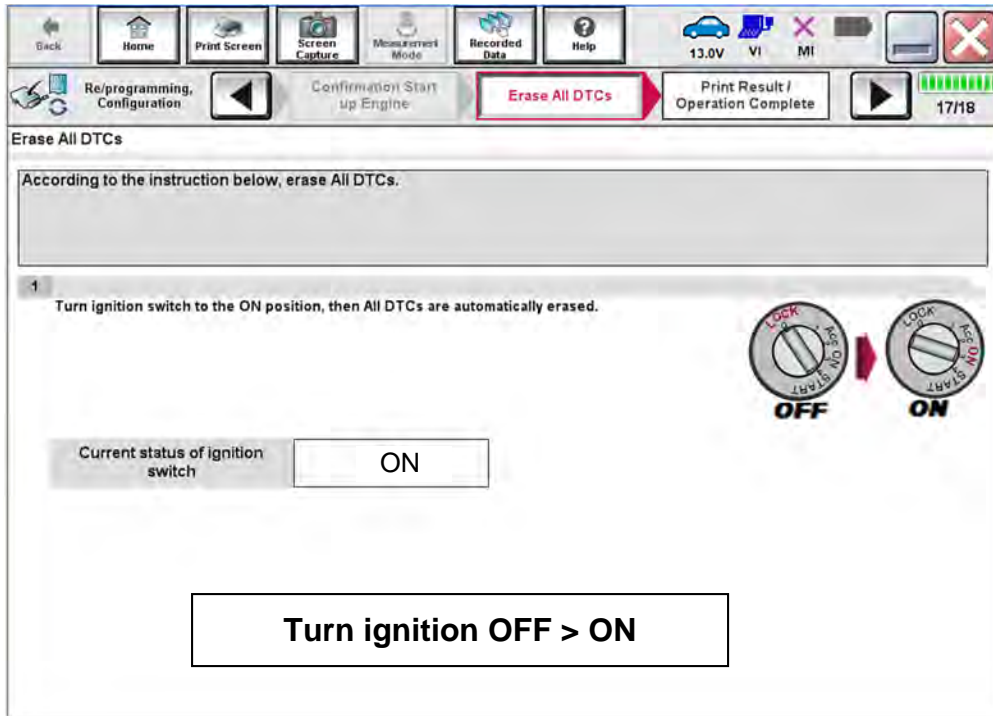


Figure 25

**HINT:** When the entire reprogramming process is complete, the screen in Figure 26 will display.

- 40. Verify the before and after part numbers are different.
- 41. Print a copy of the screen below (Figure 26) and attach it to the repair order for warranty documentation.

**HINT:** If you cannot print the screen:

- a. Select **Screen Capture**.
  - b. Name the file.
  - c. Save the file in My Documents.
    - o A copy of the screen is now saved in the C-III plus. It can be retrieved and printed at a later time.
42. Select **Confirm**.

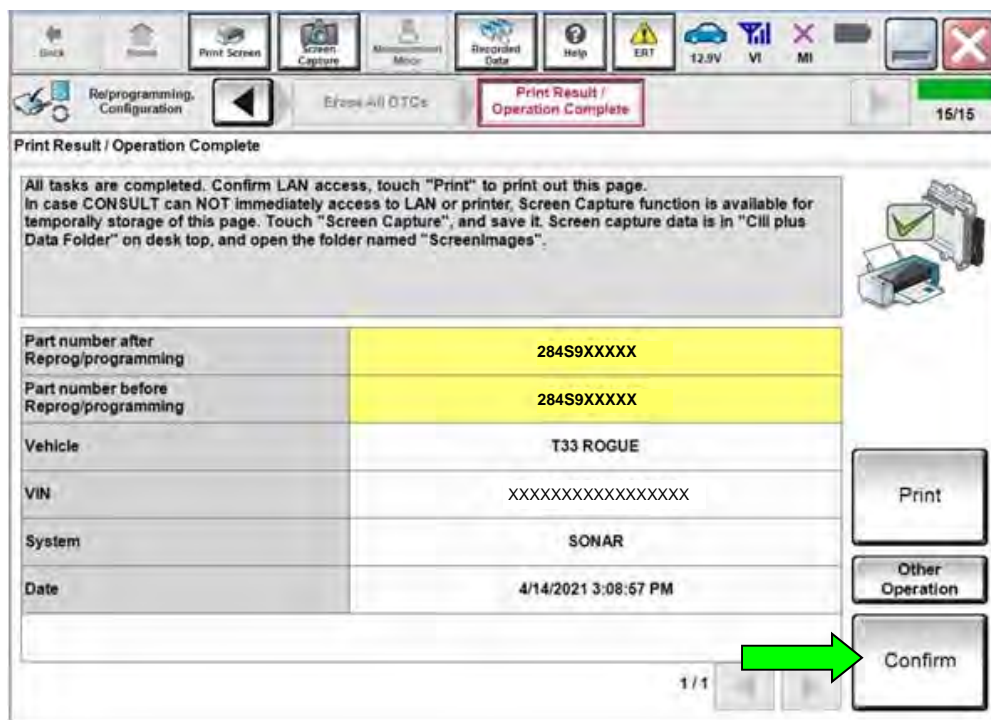


Figure 26

- 43. Select **Home** (screen not shown).

44. Select **Re/programming, Configuration**.

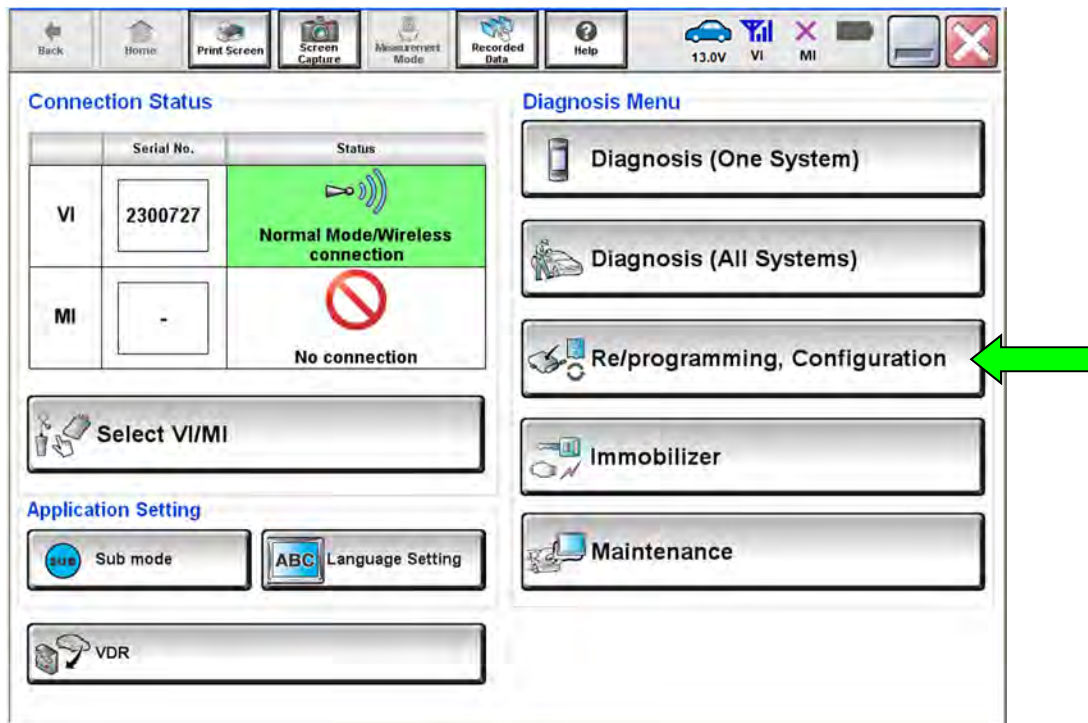


Figure 27

**HINT:** C-III plus screens for steps 45–48 are not shown.

45. Read the precautions on the C-III plus screen, check the box for Confirmed Instructions, and then select **Next**.
46. Select **Automatic Selection(VIN)**.
47. Select **Confirm**.
48. Select **Confirm**.

49. Select **SONAR**.

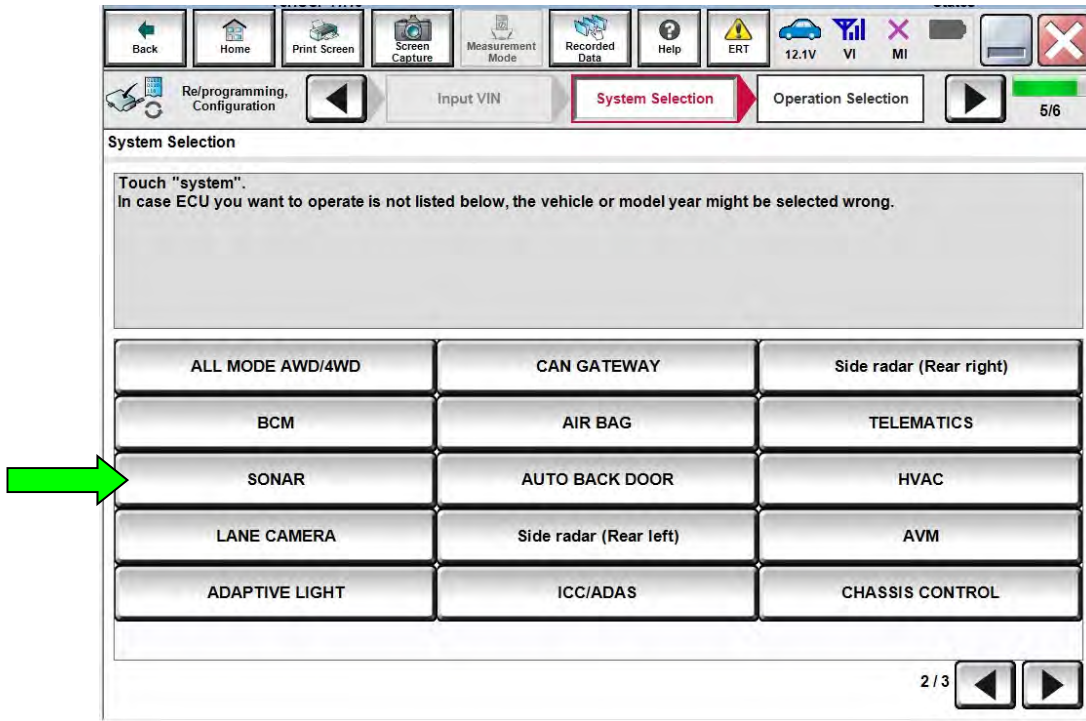


Figure 28

50. Select **Configuration**.

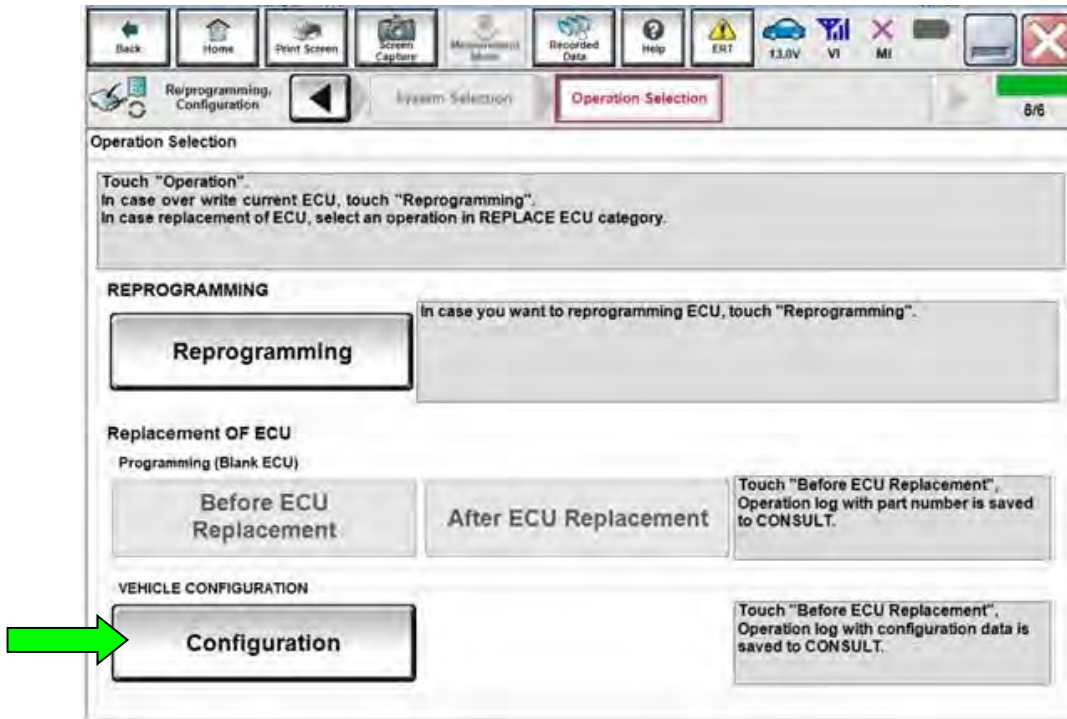


Figure 29

51. Select **START**.

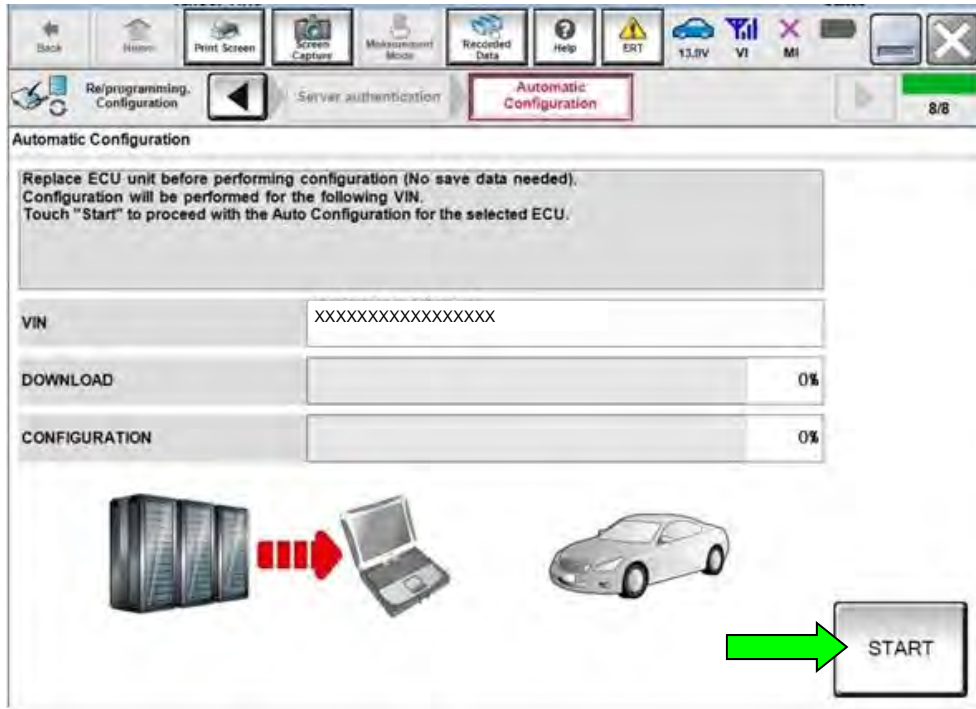


Figure 30

52. Select **End**.

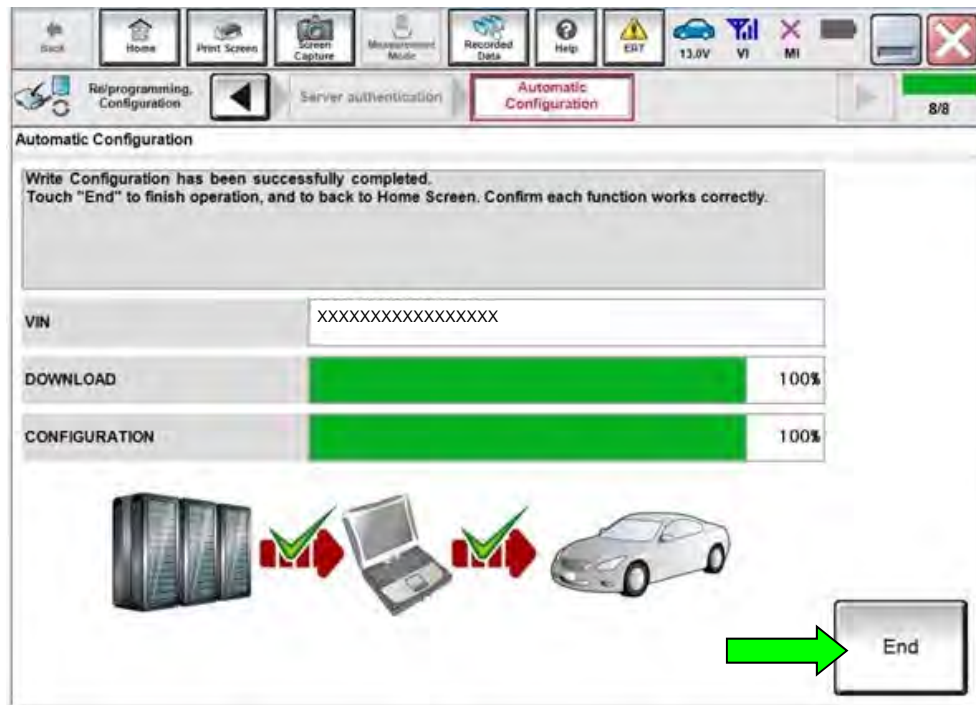


Figure 31

53. Select **Home** button (screen not shown).

54. Select **Diagnosis (All Systems)**.

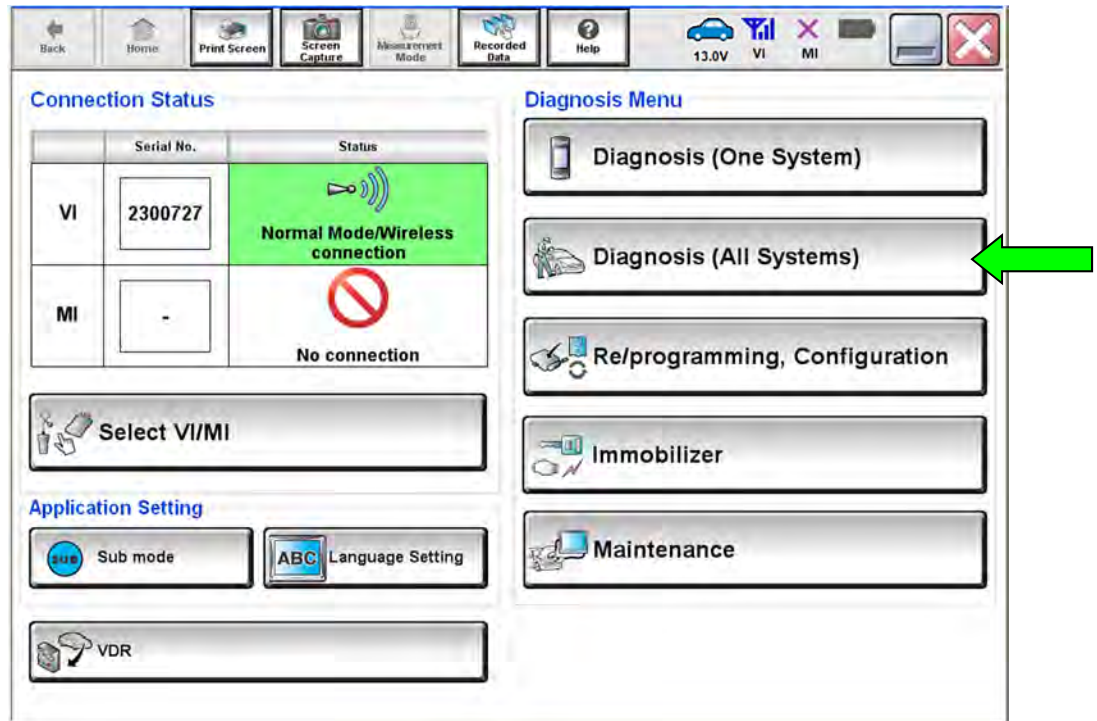


Figure 32

**HINT:** C-III plus screens for steps 55–57 are not shown.

55. Select **Automatic Selection(VIN)**.

56. Select **Confirm**.

57. Select **Confirm**.

58. Turn the ignition OFF.
59. Turn the ignition ON.
60. DTCs B2724-55 and C1F65-04 may be displayed. Select **ERASE**.

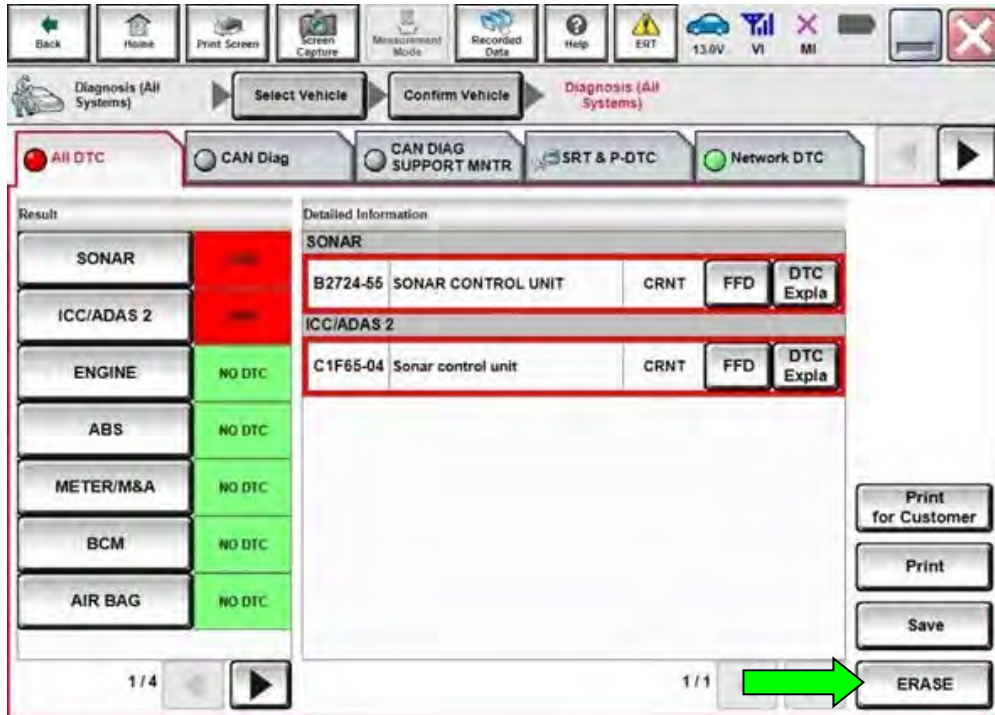


Figure 33

61. Close C-III plus.
62. Turn the ignition OFF.
63. Disconnect the VI from the vehicle.
64. Start the engine.
65. Test drive the vehicle and make sure it operates correctly and the MIL is OFF.
  - If the MIL comes ON, go back to the ESM for further diagnostic information.
  - Diagnosis and repairs beyond Sonar Control Unit reprogramming are not covered by this bulletin.

## CLAIMS INFORMATION

Submit a Primary Part (PP) type line claim using the following claims coding:

DESCRIPTION	PFP	OP CODE	SYM	DIA	FRT
Check Sonar ECU Part Number	(1)	RX9YAA	ZE	32	0.4

OR

DESCRIPTION	PFP	OP CODE	SYM	DIA	FRT
Reprogram Sonar Control Unit	(1)	RX9QAA	ZE	32	0.9

(1) Reference the table below and the electronic parts catalog to determine the applicable part to use as the Primary Failed Part (PFP).

VIN begins with "JN8" (EPC model code: T33US)	VIN begins with "5N1" (EPC model code: T33UUS)
CONTROLLER ASSY - SONAR (28532-*****)	CONTROL UNIT - PARKING ASSIST (284L0-*****)

**HINT:** FRT allows adequate time to access DTC codes. No other diagnostic procedures subsequently required. Do NOT claim any Diagnostic Op Codes with this claim.

## AMENDMENT HISTORY

PUBLISHED DATE	REFERENCE	DESCRIPTION
May 20, 2021	NTB21-040	Original bulletin published
May 28, 2021	NTB21-040A	<b>CLAIMS INFORMATION</b> revised
January 21, 2025	NTB21-040B	<b>APPLIED DATES</b> added; login steps moved to page 3; battery voltage range updated on pages 2, 15, and 17; "NOTE" references changed to "HINT"