



TECHNICAL SERVICE BULLETIN

Classification: EC24-012A	Reference: ITB24-017A	Date: January 14, 2025
------------------------------	--------------------------	---------------------------

ENGINE ROOM SUB-HARNESS

**This bulletin has been amended. See AMENDMENT HISTORY on the last page.
Please discard previous versions of this bulletin.**

APPLIED VEHICLES: 2016-2018 Q50 (V37)
2017-2018 Q60 (CV37)
APPLIED ENGINES: 2.0L Turbo Gasoline Engine

IF YOU CONFIRM

DTC P06DA-00 for “ENGINE OIL PRESSURE CONTROL” is stored as current (active) with CONSULT-III plus (C-III plus).

ACTION

Replace the engine room sub-harness. Refer to the **SERVICE PROCEDURE** in this bulletin.

IMPORTANT: The purpose of **ACTION** (above) is to give you a quick idea of the work you will be performing. You **MUST** closely follow the entire **SERVICE PROCEDURE** as it contains information that is essential to successfully completing this repair.

Bulletins are intended for use by qualified technicians, not 'do-it-yourselfers'. Qualified technicians are properly trained individuals who have the equipment, tools, safety instruction, and know-how to do a job properly and safely. **NOTE:** If you believe that a described condition may apply to a particular vehicle, DO NOT assume that it does. See your Infiniti retailer to determine if this applies to your vehicle.

SERVICE PROCEDURE

1. Connect the Vehicle Interface (VI) to the vehicle's Data Link Connector (DLC).
2. Connect the AC Adapter to the CONSULT PC.
3. Turn the ignition ON with the engine OFF.
4. Start CONSULT-III plus (C-III plus) on the CONSULT PC.
5. If prompted, select **USA/CANADA Dealers** from the drop-down menu, and then select **OK**.
6. Login using your NNAnet credentials.

IMPORTANT: If not prompted to enter your username and password, the CONSULT PC may not be connected to Wi-Fi. Close C-III plus, confirm the CONSULT PC is connected to Wi-Fi, and then reopen C-III plus.

7. Wait for the VI to be recognized (Figure 1).
 - The serial number will be displayed when the VI is recognized.
8. Select **Diagnosis (All Systems)**.

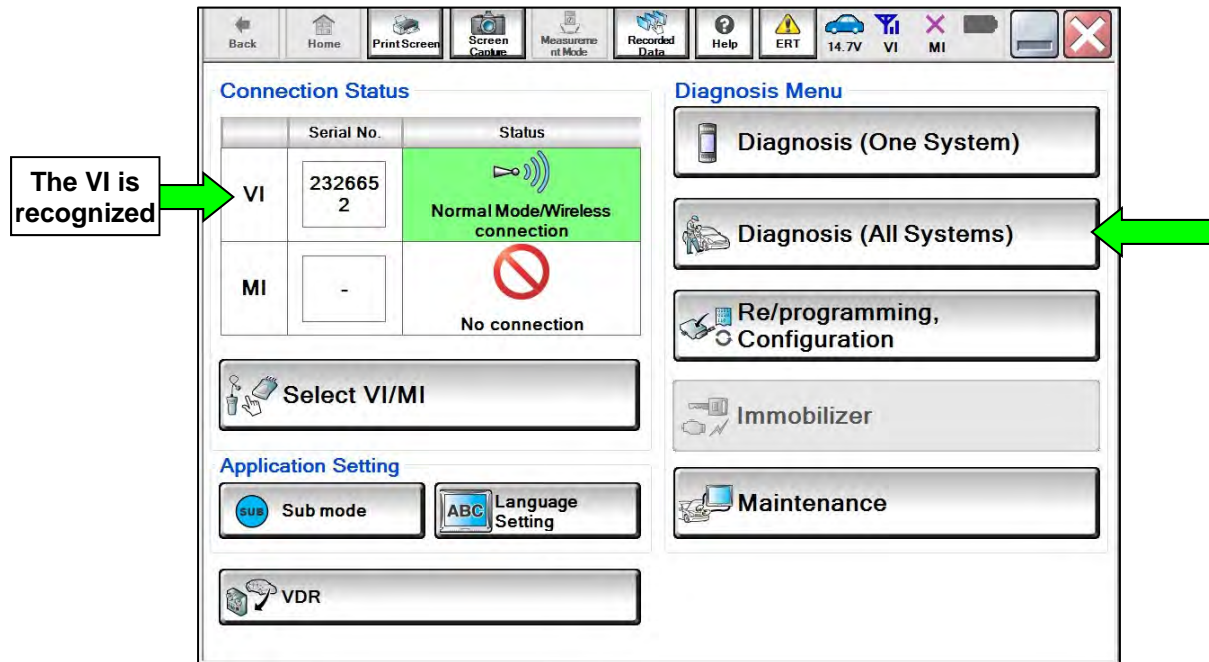


Figure 1

9. Use the arrows (if needed) to view and read all precautions.
10. Check the box confirming the precautions have been read, and then select **Next**.

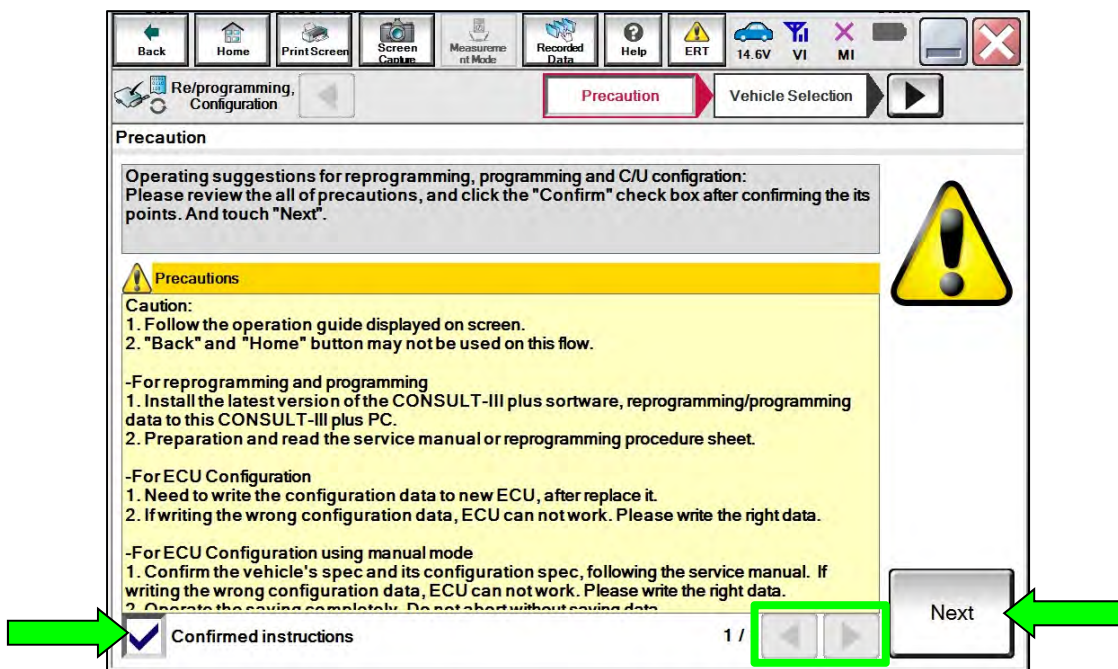


Figure 2

11. Select **Automatic Selection(VIN)**.

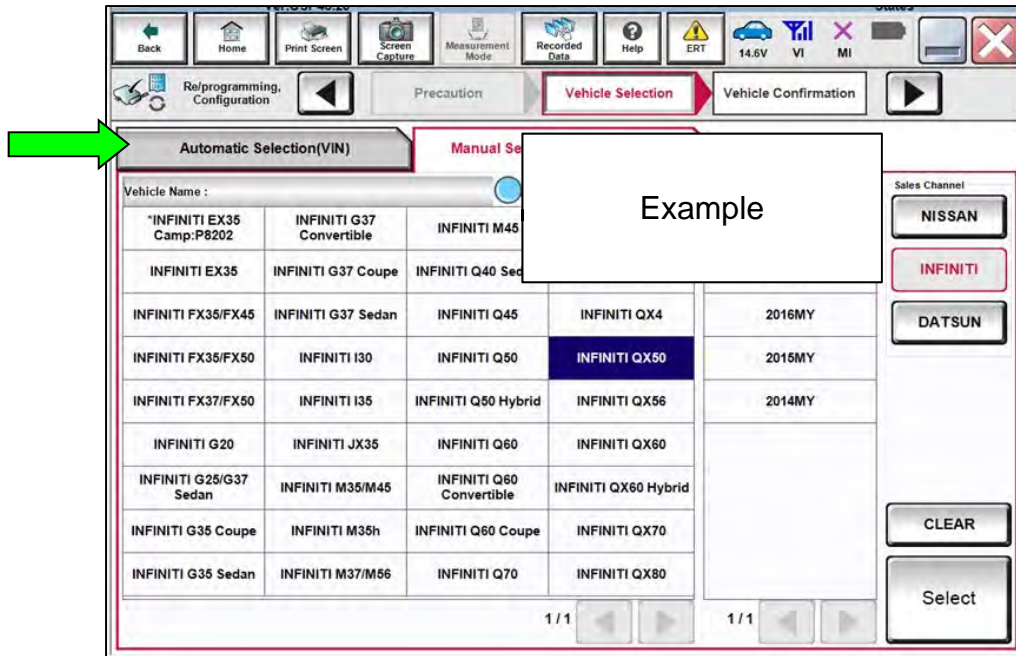


Figure 3

12. Allow the C-III plus to perform **Automatic Selection(VIN)**.

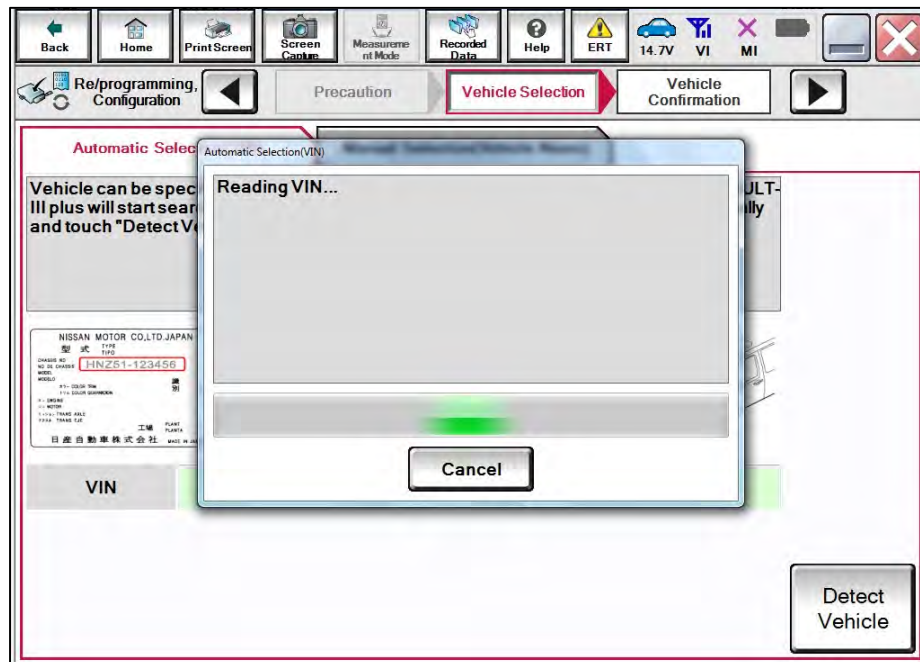


Figure 4

13. Confirm the **VIN or Chassis #** is correct, and then select **Confirm**.

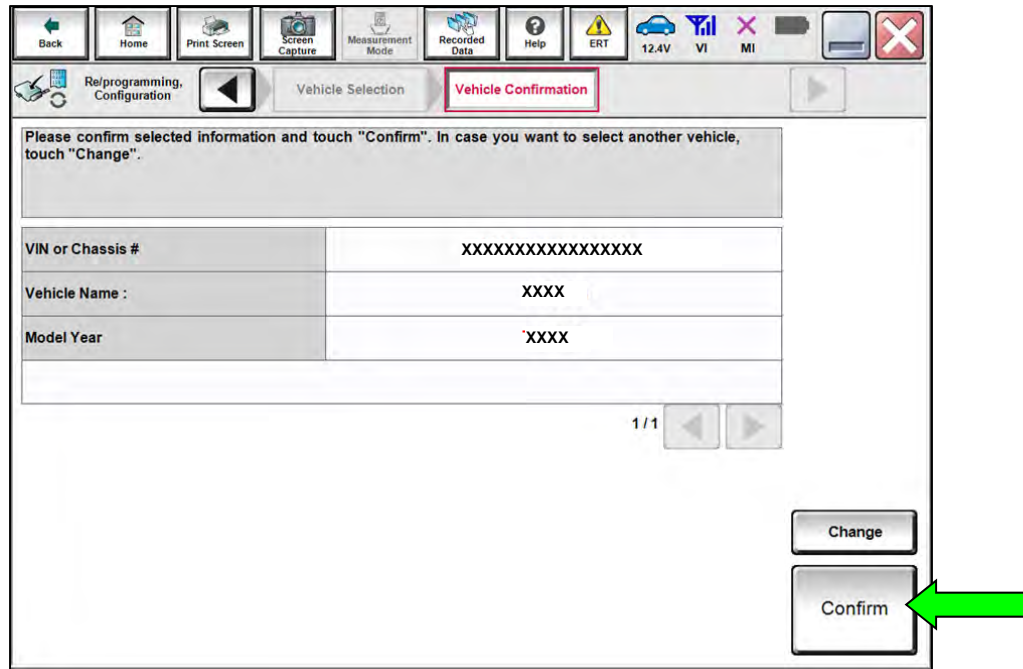


Figure 5

14. Allow the **System call** to complete.

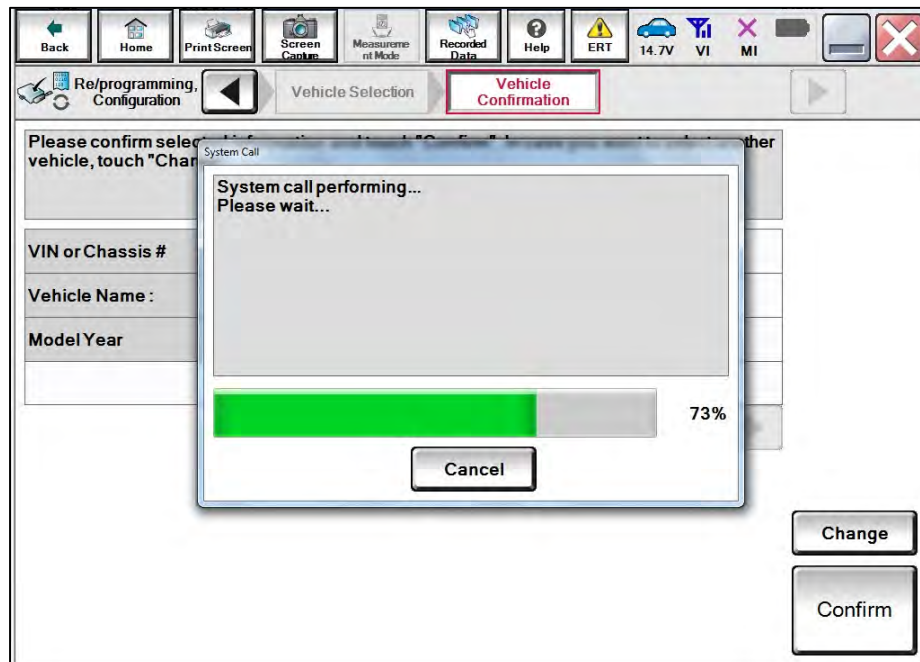


Figure 6

15. Check to see if DTC P06DA-00 for “ENGINE-OIL PRESSURE CONTROL” is “CRNT” in **ENGINE**.
 - If DTC P06DA-00 is current in the ENGINE:
 - a. Print the DTC and description and attach it to the repair order.
 - b. Replace the engine room sub-harness located in the engine oil pan.
 - On 2WD models, continue to step 16 on page 7.
 - On AWD models, skip to step 25 on page 10.
 - If DTC P06DA-00 is NOT current in the ENGINE, this bulletin does not apply. Refer to the ESM for further diagnostic information.
 - If additional DTCs, other than P06DA-00, are present in the ENGINE, refer to the ESM for further diagnostic information and repair first, then return to step 15.

HINT: Diagnosis and repair of DTCs other than P06DA-00 are not covered by this bulletin.

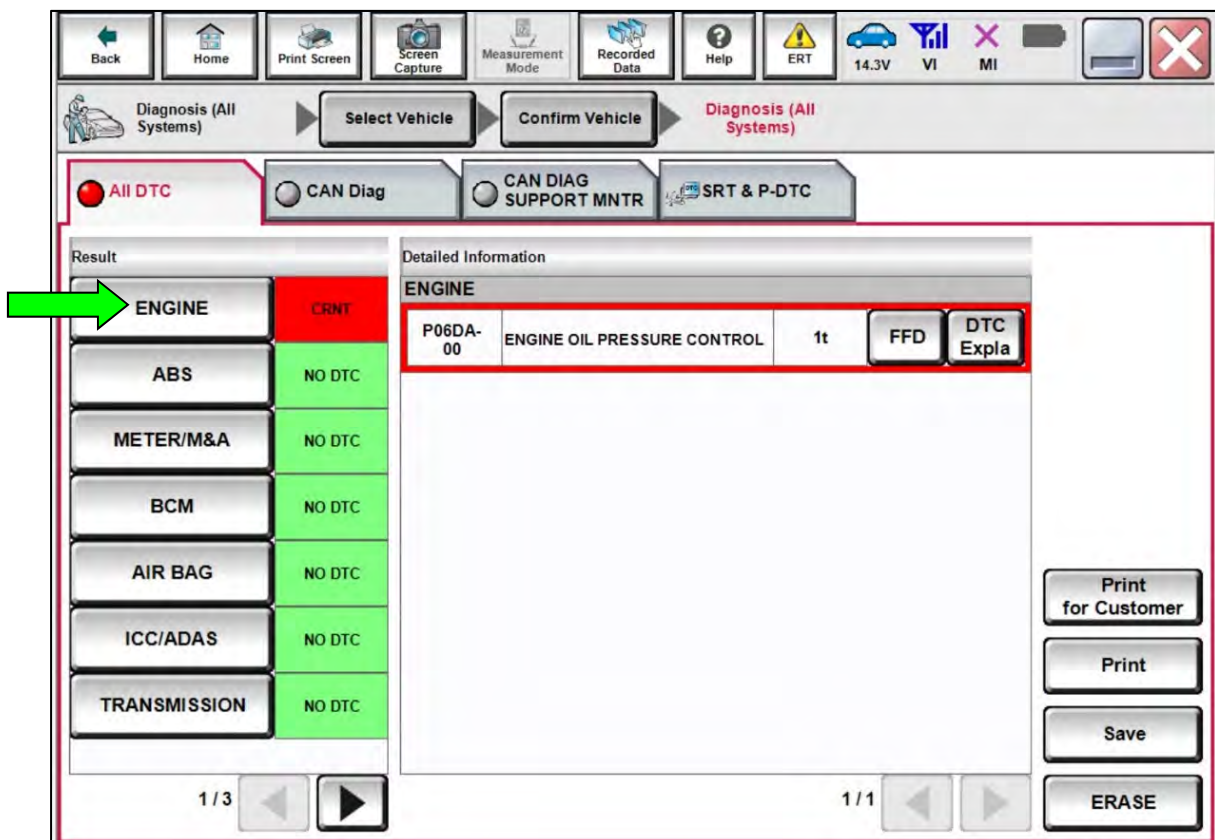


Figure 7

2WD Engine Room Sub-Harness Replacement

16. Remove the engine oil pan.

- Refer to the ESM: **ENGINE > ENGINE MECHANICAL > 2.0L TURBO GASOLINE ENGINE > UNIT DISASSEMBLY AND ASSEMBLY > OIL PAN > 2WD > Removal and Installation**

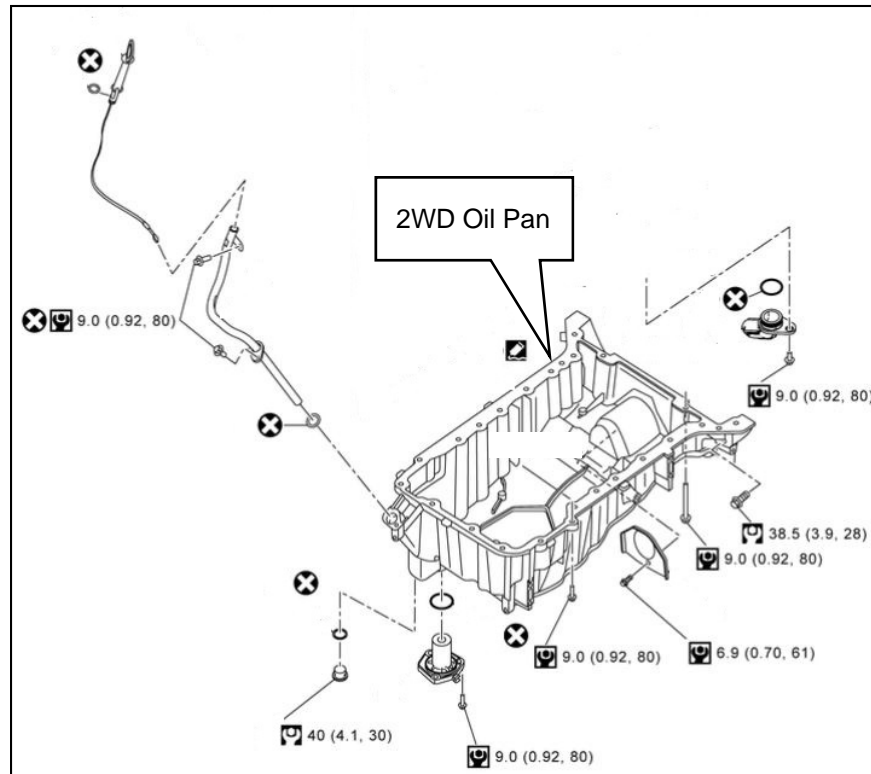


Figure 8

17. Disconnect the F176 wiring harness connector from the passenger (RH) side of the engine timing cover.
- a. Using a suitable tool, disengage the wiring harness connector lock.
 - b. Depress the wiring harness connector lock and remove the connector.

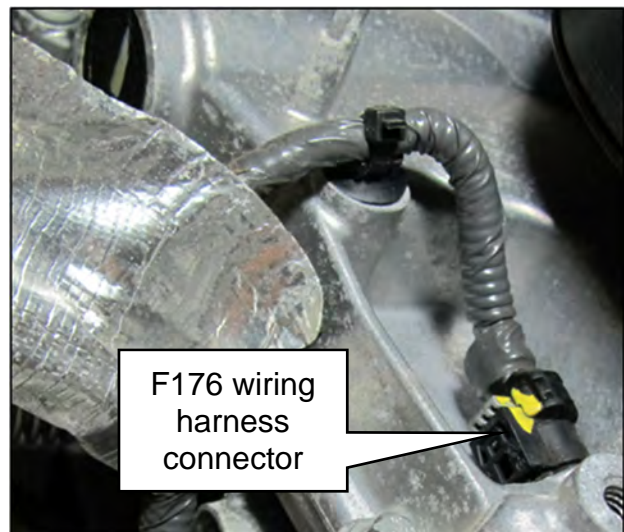


Figure 9

NOTICE

To avoid damage to the oil pump valve and wiring harness connector, use care when disconnecting the oil pump valve wiring harness connector.

18. Disconnect the oil pump valve wiring harness connector.
 - a. Using a suitable tool, disengage the wiring harness connector lock.
 - b. Depress the wiring harness connector lock and remove the connector.

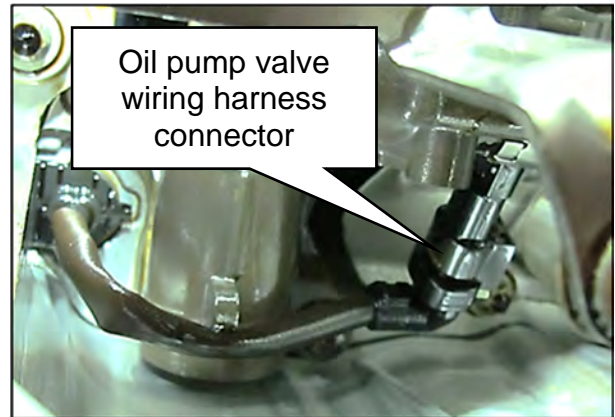


Figure 10

19. Disconnect the remaining engine room sub-harness connector.
 - Using a suitable tool, in the area shown in Figure 11 and Figure 12, apply downward force on the engine room sub-harness connector.
 - If the wiring harness connector breaks, use a suitable tool to push the remainder of the wiring harness connector upward to remove.

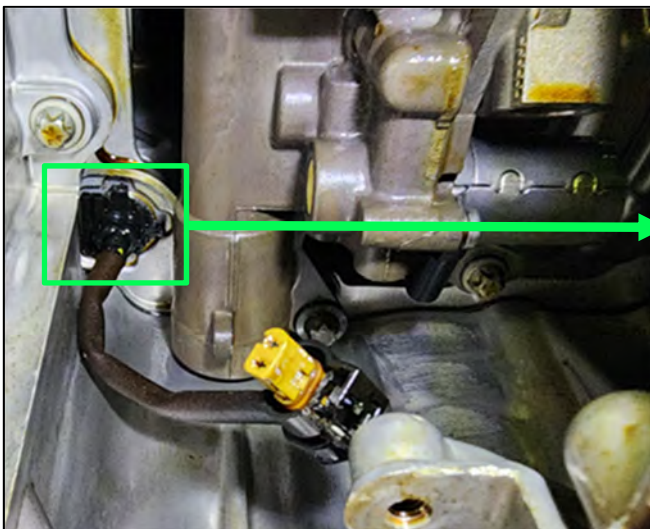


Figure 11

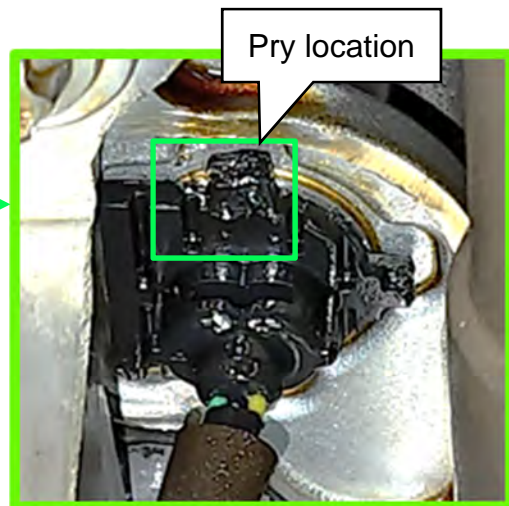


Figure 12

20. Connect and lock the oil pump valve wiring harness connector of the NEW engine room sub-harness.

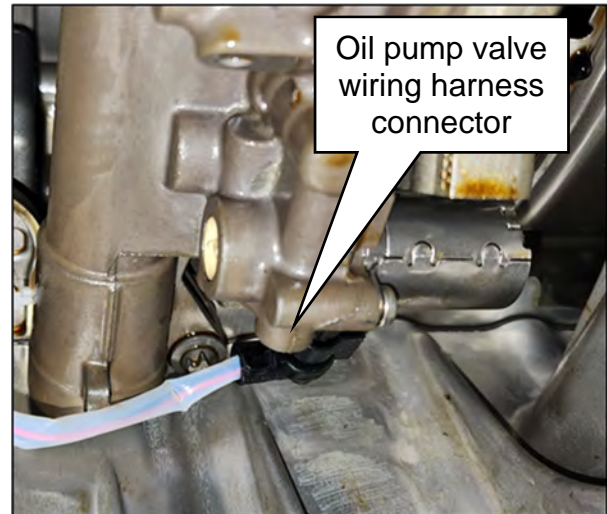


Figure 13

21. Connect the remaining connector of the NEW engine room sub-harness into the timing cover.
- Lubricate the connector O-ring with engine oil.
 - Orient the wiring harness connector so that the flat side faces the front of the engine as shown in Figure 14.
 - Push the connector upward until it is fully seated.

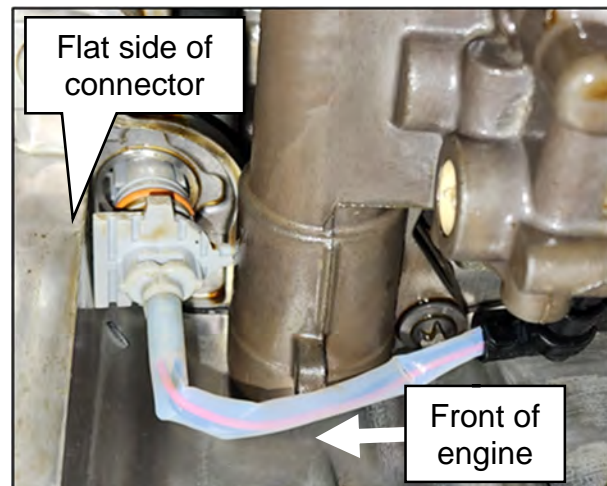


Figure 14

22. Reinstall the engine oil pan.
- Refer to the ESM: **ENGINE > ENGINE MECHANICAL > 2.0L TURBO GASOLINE ENGINE > UNIT DISASSEMBLY AND ASSEMBLY > OIL PAN > 2WD > Removal and Installation**
23. Fill the engine with the correct ESM specified engine oil, Viscosity 5W-30 or equivalent.
- 2WD Engine oil capacity (Approximate):
 - With oil filter change – 6.3L (6-5/8 US Qt)
 - Without oil filter change – 5.8L (6-1/8 US Qt)
24. Skip to step 36 on page 14.

AWD Engine Room Sub-Harness Replacement

25. Remove the oil pan (lower).

- Refer to the **ESM: ENGINE > ENGINE MECHANICAL > 2.0L TURBO GASOLINE ENGINE > UNIT DISASSEMBLY AND ASSEMBLY > OIL PAN > AWD > Removal and Installation**

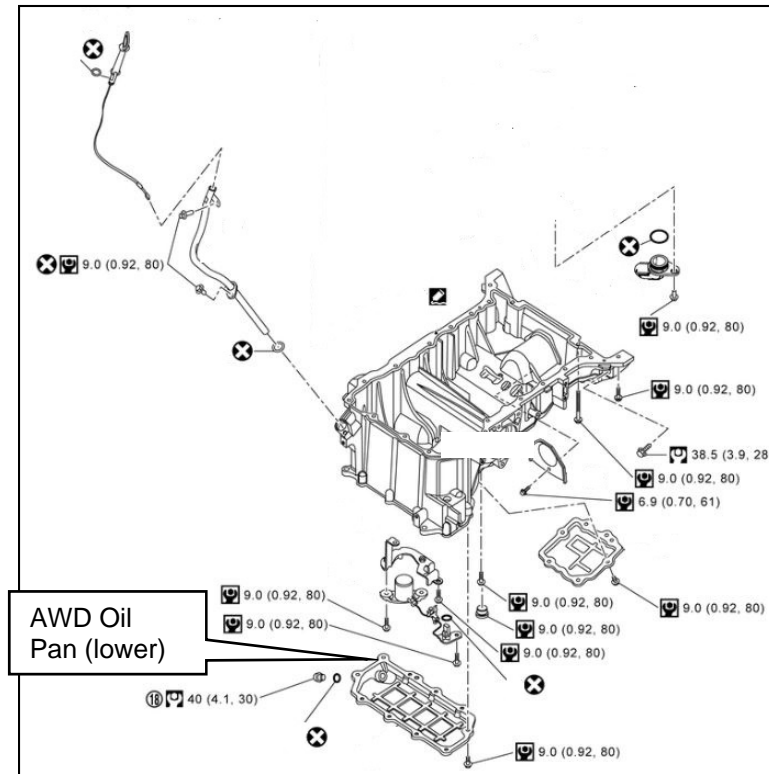


Figure 15

26. Remove the engine oil level switch bracket assembly.

- Remove the three (3) oil level switch bracket retaining bolts.
- Do not remove the oil level switch from the bracket.
- Do not disconnect the wiring harness from the oil level switch.

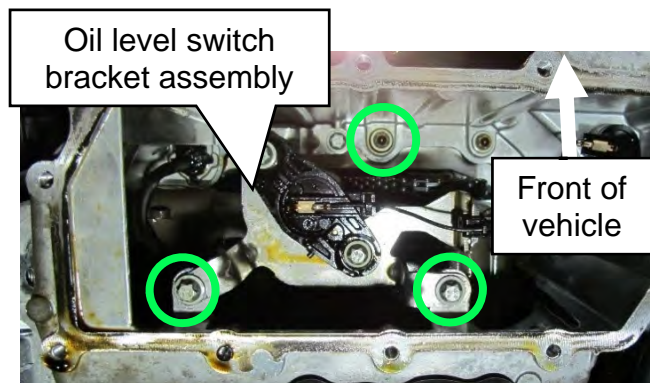


Figure 16

27. Flip the engine oil level switch bracket assembly over and use one (1) of the bracket retaining bolts to secure it to the upper oil pan.

- Secure the oil level switch bracket assembly as shown in Figure 17.
- Do not let the oil level switch bracket assembly hang by the wiring harness as damage may occur.

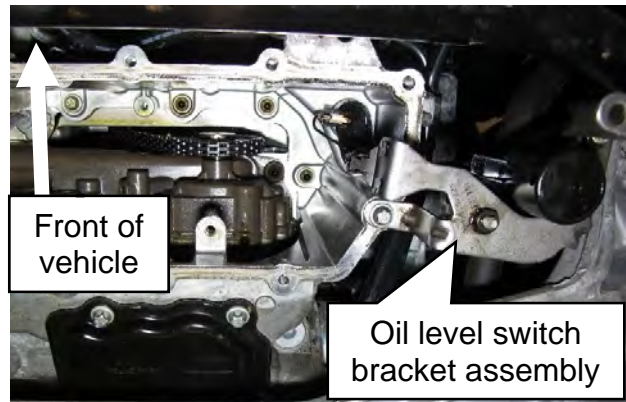


Figure 17

28. Disconnect the engine room sub-harness F176 wiring harness connector from the passenger (RH) side of the engine timing cover.
- a. Using a suitable tool, disengage the wiring harness connector lock.
 - b. Depress the wiring harness connector lock and remove the connector.

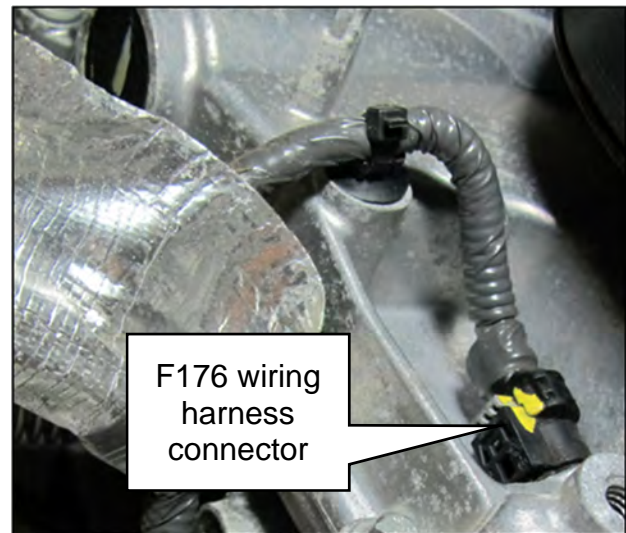


Figure 18

NOTICE

To avoid damage to the oil pump solenoid valve and wiring harness connector, use care when disconnecting the oil pump valve wiring harness connector.

29. Disconnect the oil pump valve wiring harness connector.
- a. Using a suitable tool, disengage the wiring harness connector lock.
 - b. Depress the wiring harness connector lock and remove the connector.



Figure 19

30. Remove the engine side of the engine room sub-harness.

- Using a suitable tool, in the area shown in Figure 20 and Figure 21, apply downward force on the engine side wiring harness connector.
- If the wiring harness connector breaks, use a suitable tool to push the remainder of the wiring harness connector upward to remove.

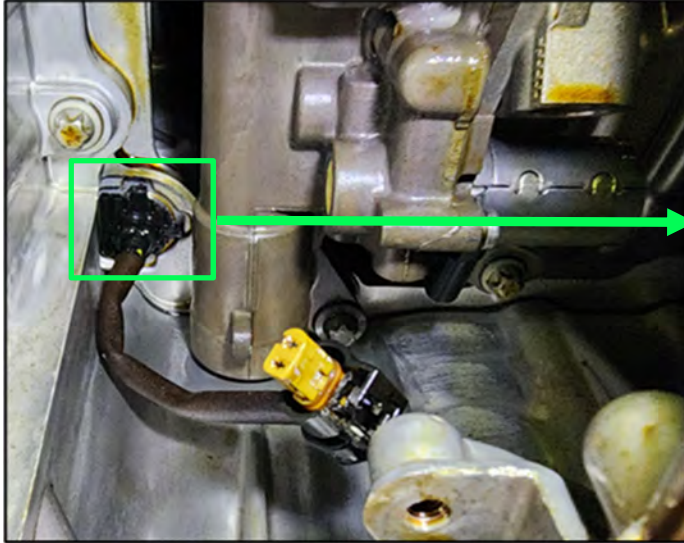


Figure 20

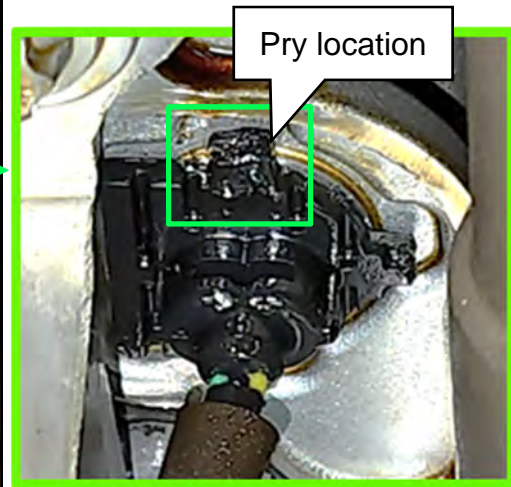


Figure 21

NOTICE

To avoid damage to the oil pump solenoid valve, closely follow step 31 to prevent the oil pump valve wiring harness connector from contacting the oil pan.

31. Connect the oil pump valve wiring harness connector of the NEW engine room sub-harness.

- a. Position the oil pump valve wiring harness connector of the NEW engine room sub-harness connector at an angle as shown in Figure 22.
- b. Connect and lock the wiring harness connector.

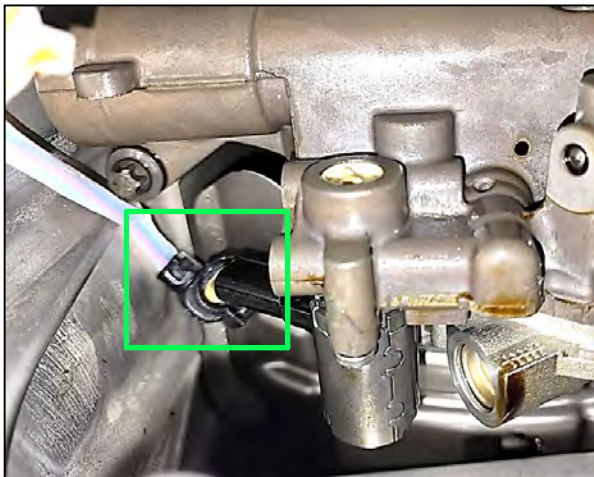


Figure 22

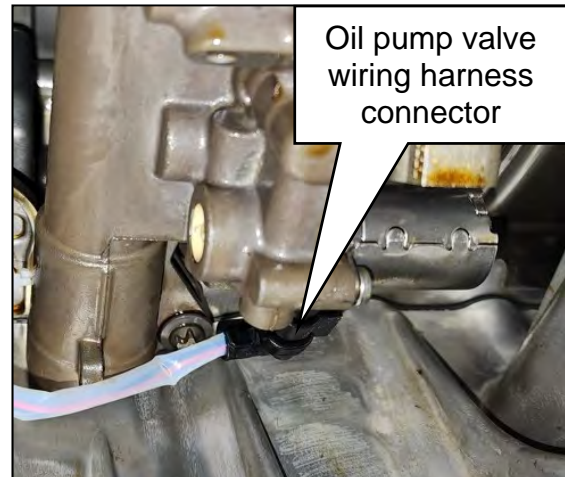


Figure 23

32. Install the engine side wiring harness connector into the timing cover.
- Lubricate the connector O-ring with engine oil.
 - Orient the connector so that the flat side faces the front of the engine as shown in Figure 24.
 - Push the connector upward until it is fully seated.

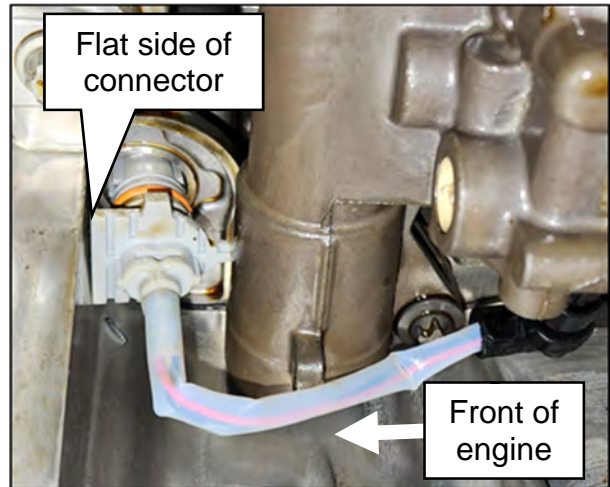


Figure 24

33. Flip the engine oil level switch bracket assembly over and install it into the upper oil pan.
- Secure the oil level switch bracket assembly with the three (3) retaining bolts.
 - To avoid damage to the oil level switch wiring harness, position it as shown in Figure 25.
 - Torque the oil level switch bracket retaining bolts.
 - Oil level switch bracket retaining bolt torque: 9 N•m (0.92 kg-m, **80 in-lb**)

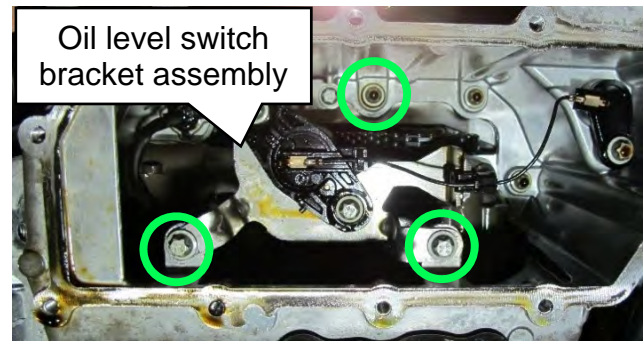


Figure 25

34. Reinstall the oil pan (lower).
- Refer to the ESM: **ENGINE > ENGINE MECHANICAL > 2.0L TURBO GASOLINE ENGINE > UNIT DISASSEMBLY AND ASSEMBLY > OIL PAN > AWD > Removal and Installation**
35. Fill the engine with the correct ESM specified engine oil, Viscosity 5W-30 or equivalent.
- AWD Engine oil capacity (Approximate):
 - With oil filter change – 6.6L (**7 US Qt**)
 - Without oil filter change – 6.1L (**6-1/2 US Qt**)

36. Select **ERASE ALL DTCs** and verify no DTCs return.
37. Verify the engine starts normally and no malfunctions are present in the combination meter.
 - If any malfunctions exist, refer to the ESM for further diagnostic information.
38. Turn the engine OFF and verify the engine oil level gauge indicates the engine oil level is full.

PARTS INFORMATION

DESCRIPTION	MODEL	PART NUMBER	QUANTITY
Harness-Sub, Engine Room	2WD/AWD	24011-96C8N	1
Oil Filter	2WD/AWD	15208-HG00D	1
Engine Oil (5W30) (1)	2WD/AWD	999PK05W30HM	(2)
PIN – COTTER, SPLI (outer tie rod)	2WD	08921-3252A	2
SEAL – OIL, DRAIN PLUG	2WD	11026-2V70B	1
SEAL – OIL, DRAIN PLUG	AWD	11026-JA00A	1
WASHER-SEAL	2WD	21626-32U00	4
SEAL-OIL LEVEL GAUGE GUIDE	2WD	15148-HG00B	1
GASKET CONVERTER	2WD	20813-4GD0A	1
GASKET-EXHAUST	2WD	20692-8H30A	1
GASKET-EXHAUST	2WD	20692-JK00B	2
NUT-FLANGE	2WD	08918-3401A	6
NUT-FLANGE, HEX	2WD	08918-3081A	2
NUT SELF LOCK	2WD	01225-00062	2
BOLT-FIX PROPELLER SHAFT	2WD	37120-AH00A	3
NUT-FIX PROPELLER SHAFT	2WD	37171-AL60A	3
WASHER-LOCK	2WD	37121-JK20B	3
CLAMP	2WD	14464-4GD0A	1
TRANS FLUID MATIC F (1)	2WD	999MPMAT00S	(3)
Gasket Maker	2WD	999MP1217HP	1

- (1) Order this item through the Nissan Maintenance Advantage program: Phone 877-NIS-NMA1 (877-647-6621). Website order via link on the dealer portal; www.NNAnet.com and click on the “Maintenance Advantage-Tire/Battery/Chemical” link.
- (2) Fill to specification, a maximum of 6.6L (**7 US Qt**).
- (3) Fill to specification, a maximum of 10.41L (**11 US Qt**).

CLAIMS INFORMATION

Submit a Primary Part (PP) type line claim using the following claims coding:

DESCRIPTION	MODEL	PFP	OP CODE	SYM	DIA	FRT
Engine Room Sub-Harness (Oil Pump Valve) - RP	2WD	(1)	CX43AA	HD	32	9.1
	AWD	(1)	CX44AA	HD	32	1.5

- (1) Reference the electronic parts catalog and use the Sub Engine Harness (24011-*****) as the Primary Failed Part (**PFP**).

AMENDMENT HISTORY

PUBLISHED DATE	REFERENCE	DESCRIPTION
December 17, 2024	ITB24-017	Original bulletin published
January 14, 2025	ITB24-017A	CLAIMS INFORMATION updated

