 <b>HYUNDAI</b> <b>Technical Service Bulletin</b>	GROUP <b>BODY</b>	NUMBER <b>25-BD-001HG</b>
	DATE <b>JANUARY 2025</b>	MODEL(S) <b>G80 (DH)</b>
<b>SUBJECT:                   DARK CHROME TRIM STAINED OR DISCOLORED</b>		

**This TSB supersedes 19-BD-002HG to remove the cleaning procedure and revise the entire bulletin to instead replace the affected stained dark chrome trim.**

**Description:** This procedure provides repair information for the dark chrome trim when stains are present. Some stains may occur from hard water or cleaning chemicals used during a car wash. Follow the procedures below to replace the affected dark chrome moldings.



<b>Applicable Vehicles (Certain):</b> <ul style="list-style-type: none"> <li>• 2017-2018MY G80 (DH) vehicles</li> </ul>
---

## Parts Information:

Model	Part Name	Part Number
G80 (DH)	MOULDING ASSY-FRT DR FRAME,LH	82850-B1600
	MOULDING ASSY-FRT DR FRAME,RH	82860-B1600
	MOULDING ASSY-RR DR FRAME,LH	83850-B1600
	MOULDING ASSY-RR DR FRAME,RH	83860-B1600
	GLASS & MOULDING ASSY-QUARTER FIXED,LH	87810-B1200
	GLASS & MOULDING ASSY-QUARTER FIXED,RH	87820-B1200
	W/STRIP ASSY-FR DR BELT O/S LH	82210-B1600
	W/STRIP ASSY-FR DR BELT O/S RH	82220-B1600
	W/STRIP ASSY-RR DR BELT O/S LH	83210-B1600
	W/STRIP ASSY-RR DR BELT O/S RH	83220-B1600
	GRILLE ASSY-RADIATOR	86350-B1920

## Warranty Information:

Model	Op. Code	Operation	Op. Time	Causal Part	Nature Code	Cause Code
G80 (DH)	Refer to WEBLTS	Refer to WEBLTS	Refer to WEBLTS	Refer to parts information above	A41	ZZ6

**NOTE 1:** Normal warranty applies.

**NOTE 2:** Submit claim on Claim Entry Screen as "Warranty" type.

**NOTE 3:** Take a picture of the warrantable defect. Op times include VIN, Mileage, and Repair validation photo(s) as outlined in the Digital Documentation Policy.

**NOTE 4:** The incident parts are subject to callback through the normal Warranty Technical Center (WTC) parts return process. **Claim is subject to debit if the part is not returned.**

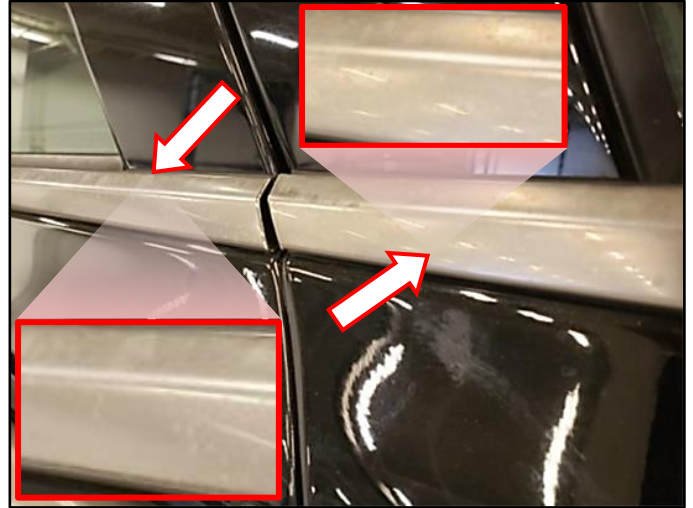
**NOTE 5:** If a part is found in need of replacement while performing this TSB and the affected part is still under warranty, submit a separate claim using the same repair order. If the affected part is out of warranty, submit a Prior Approval request for goodwill consideration prior to performing the work.

## Service Procedure:

**STUI**

This TSB includes Repair validation photos. Refer to the latest Warranty Digital Documentation Policy for requirements.

1. Inspect all exterior chrome surfaces on the vehicle to confirm which trim pieces have stains.



- 2.

**STUI**

Using STUI, take photos of each stained/discolored dark chrome trim with the last 6 digits of the VIN and the date of repair on a piece of paper.

Upload the photos to STUI.



3. Replace each affected dark chrome trim.  
Refer to the applicable shop manual procedure for each part.
4. The service procedure is now complete.