



**PROTERRA**



# FLEET CHECK

<b>ISSUE DATE:</b>	7/21/2022
<b>SERVICE BULLETIN SUBJECT:</b>	800 Volt Pneumatic System and Fill Order Fleet Check
<b>VINs or MODELS AFFECTED:</b>	Service Specified Buses
<b>COMPLETE BY:</b>	Next Service Opportunity
<b>SERVICE BULLETIN #:</b>	SC-22-92
<b>LABOR OPERATION CODE:</b>	BH45Z

**NOTICE! It is expected that this process may require up to one half hour and two associates per bus. Please schedule appropriately to minimize vehicle downtime.**

## 800 VOLT PNUMATIC SYSTEM AND FILL ORDER FLEET CHECK

### Description

This procedure describes the process of verifying proper plumbing of the Rear Air Tank assembly.

## Tools/Parts Required

### Tools and Supplies Required:

- Square Key

### Parts Required:

- None

## Procedure:

1. With the Main Disconnect in the rear of the bus powered on, station one associate in the driver's workplace and the second associate at the streetside rear of the bus.
2. Using a Square Key, open the streetside lower hatch.



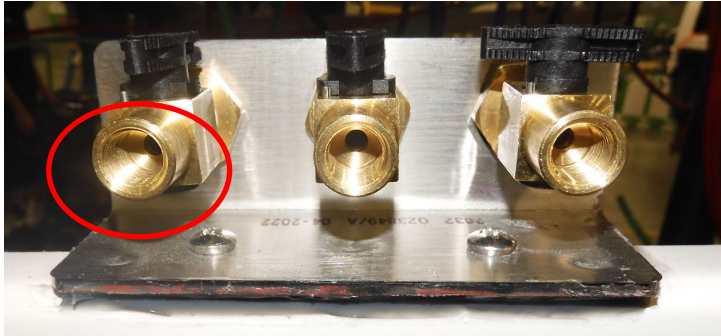
3. Using Wheel Chocks, block the wheels so that the bus cannot move.
4. Release the parking brake.
5. Set the Master Switch in the driver's workplace to the "ON" Position.



6. Allow the Air Compressor to run until it reaches its setpoint and shuts off.
7. Set the Master Switch to the "Acc" Position.



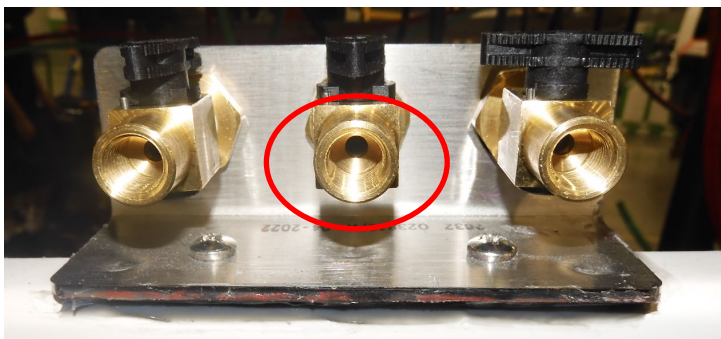
8. Working at the streetside rear of the bus, open the valve to drain the Primary Air Tank.



9. Working in the driver's workplace, monitor the Primary Air Tank pressure to ensure that the correct tank is draining.



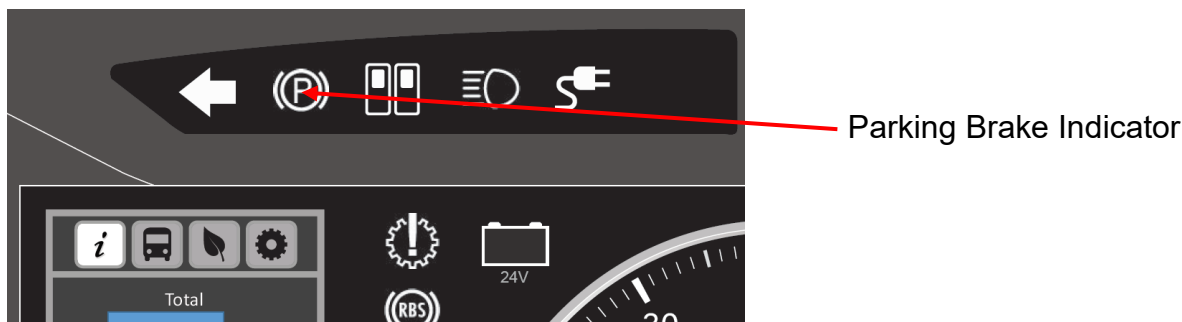
10. Open the center valve to drain the Secondary Tank.



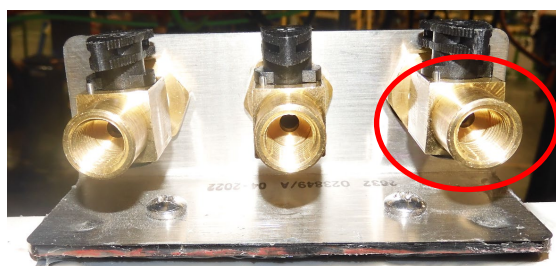
11. Working in the driver's workplace, monitor the Secondary Air Tank pressure to ensure that the correct tank is draining.



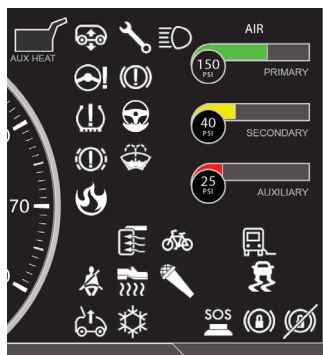
- Verify that the Parking Brake engages when both tanks fall below 40 PSI. This is displayed by an icon on the dash.



- Open the rearmost valve to drain the Auxiliary air tank.



- Monitor the dash to ensure that the Auxiliary Air Tank is draining.



- Complete the following table to record the results of the fleet check. Record "Fault" or "OK" for each tank.

Primary Tank	Secondary Tank	Auxiliary Tank

- If any faults are recorded, escalate the work order to Proterra Service to schedule a repair.
- Using a Square Key, close and latch the rear hatch.
- Return the bus to service if no faults were found.