



SIB 35 01 23

2025-01-23

CREAKING NOISE FROM THE BRAKE PEDAL AREA

This Service Information Bulletin (Revision 1) replaces SI B35 01 23 **dated April 2023**.

What's New:

- Claim Information revised

<input checked="" type="checkbox"/>	THIS REPAIR IS MOBILE FRIENDLY
-------------------------------------	--------------------------------

MODEL

G70 (7 Series Sedan)	G70 i7 xDrive60 Sedan (BEV)	i20 (iX Sports Activity Vehicle)
----------------------	-----------------------------	----------------------------------

SITUATION

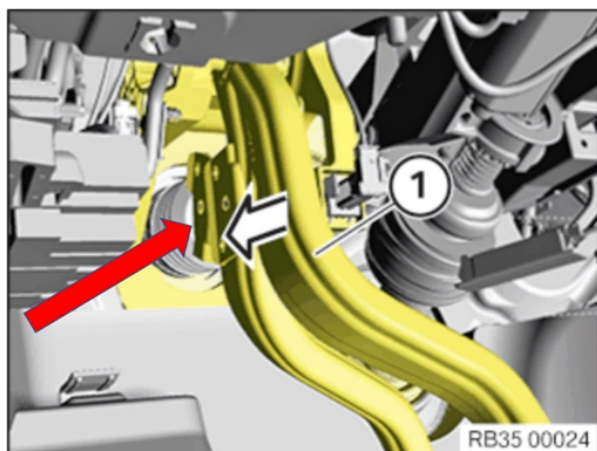
When the brake pedal is pressed/ released, a creaking noise may be heard from the pedal area for the Integrated Brake System (IB).

See attached video V35 01 23.

This noise may be present with the vehicle stationary and the engine running.

CAUSE

Unfavorable tolerance in the connection between the pedal mechanism and the IB.

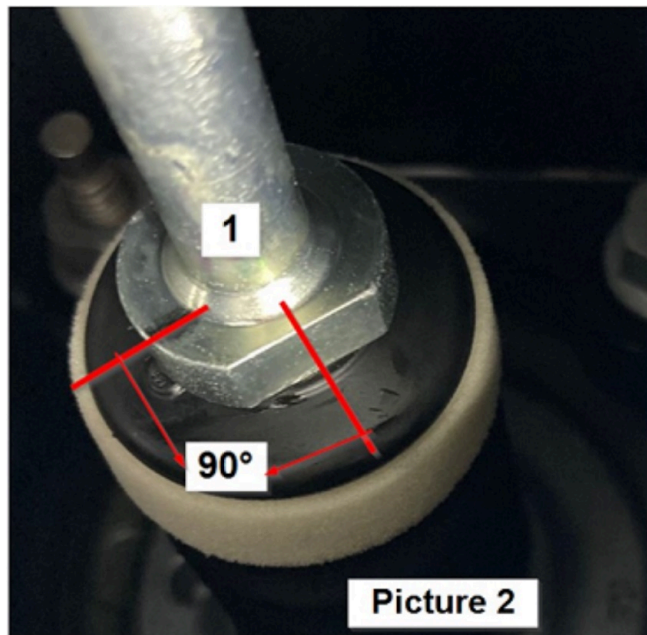
CORRECTION

Adjustment of the IB piston rod in the area indicated by the red arrow

PROCEDURE

1. Remove the trim panel for the pedal assembly as per REP51 45 184.

2. Mark the piston rod (1) to set the starting point for a 90° clockwise rotation



3. Using channel lock pliers with **protected jaws**, turn the piston rod clockwise by 90°

NOTE: It is important not to damage the piston rod

4. Does the noise still occur after the piston rod adjustment of 90° (vehicle stationary, engine running: no road test needed)?

No: Reinstall the trim panel for the pedal assembly

Yes: Submit TSARA case with video file of the noise for further assistance

CLAIM INFORMATION

Covered under the terms of the BMW New Vehicle Limited Warranty for Passenger Cars and Light Trucks as described below.

Defect Code:	3521900100	G70 I20 Groaning noise from pedal mechanism area
---------------------	-------------------	---

Obtain the flat rate unit (FRU) allowances for the following that applies.

Labor Operation	Description	Labor Allowance
00 77 162	00 77 162 Repairing pedal mechanism (Main work)	As applicable
Or:		
00 77 724	00 77 724 Repairing pedal mechanism (Plusposition)	As applicable
And, as needed:		
35 99 000*	Verifying the creaking noise is emanating from the pedal area for the Integrated Brake System (Work time)	WT FRU
Or:		
00 58 500*	Diagnosis Worktime Flat Rate	2 FRU

If you are using a Main labor code for another repair, use the Plus code labor operation 00 77 684 instead of 00 77 162.

Work time labor operation codes 35 99 000 and 00 58 500 are not considered Main labor operations.

*Based on which one applies to your center, please refer to **SI B01 01 20** or **B01 07 20** for the applicable procedure for documenting, claiming, and explaining, on the RO and in the claim comments, your diagnosis
Copyright ©2025 BMW of North America, Inc.

work time (WT), job/repair work time (WT), and the vehicle repairs your center performed, unless otherwise required by State law.

BMW Group’s AIR Application Resource for Flat Rate Labor Operation Codes

To obtain the corresponding flat rate unit (FRU) allowance information from the BMW Group AIR application resource, start by entering the Chassis Number (last seven (7) characters of the VIN), and click on the “Search” icon. If the “Vehicle Selection” window displays two or more model possible vehicle choices, select the applicable Model, or enter the full VIN (17 characters) instead to proceed. Click on the “Flat Rate Units” button and enter a flat rate labor operation code number “without spaces” in the field to the right, click on the “Search” icon to display the corresponding listing of “Flat rate unit group details” that are available and their corresponding FRU allowances.

FEEDBACK REGARDING THIS BULLETIN

Technical Feedback	To submit feedback for the technical topic of this bulletin: Submit your feedback in the rating box at the top of this bulletin
Warranty Feedback	To submit feedback for the CLAIMS section of this bulletin: Submit an IDS ticket to the Warranty Department, or use the chat available in the Warranty Documentation Portal
Parts Feedback	To submit feedback for the PARTS section of this bulletin: Submit an IDS ticket to the Parts Department

Supporting Materials
Videos
[35 01 23](#)

