

MAS004045 RU 25-01

RAPID UPDATE

FROM: Maserati TSO

TO: Maserati Network



Maserati

PERSONAL SERVICE LAB

MASTERS OF CARE

Rapid Update 769 MC20 – Door Compartment Carpet Check

TECHNICAL SERVICE OPERATIONS



DATE: January 9, 2025

Certain Maserati MC20 and MC20 Cielo (M240) MY22 MY23 MY24 listed in MODISCS+ are involved in a Rapid Update to verify the correct gluing and, if necessary, restore the carpet that covers the door area.

The upholstery may have been assembled in a way that caused the double-sided adhesive to improperly bond with the fabric portion of the carpet, potentially leading to detachment. The procedure involves carefully inspecting the area, and if any sections are found to be insufficiently adhered, applying a patch using a specially designed tape prepared for this purpose.

We remind you that all the Rapid Updates must be performed within the first workshop visit, regardless of the Mandatory setting set in Modis, as required by Maserati policies.

Also, for vehicles in Stock Dealer / PDI, it is necessary to carry out all action operations before delivery to the end customer, as required by the White Book and explicitly reported in the Pre-delivery checklist.


Please read and review this bulletin first before ordering parts and/or starting the procedure.

Contact your Regional AfterSales Manager (RAM) or the Technical Support Helpdesk if you have any questions.

Thank You for your continued support and cooperation.

Maserati North America
Aftersales Dept.

Technical Procedure

 All images shown in this bulletin are for illustrative purposes only

1. Always check ModisCS+ to see if the vehicle is involved in this action and if it has not been previously performed.
2. Before starting, follow the procedure for protecting your interior.
3. Carry out a thorough check of all the carpet that covers the door loop, both in the sill area and in the upright area, checking with your fingers that the carpet does not rise, especially in the area where it joins the gaskets.

Note: Check both the **left** and **right sides** of the vehicle.



4. If you do not notice **any lifting or detachment** of the carpet in any of the controlled areas, the car is **OK** and no other type of intervention is necessary. It is then possible to deliberate the car.

5. If, on the other hand, you notice detachment or lifting of the carpet in the areas analyzed, it is necessary to proceed with the repair, following the procedure indicated in this bulletin. Check all four areas indicated (sill and upright, both right and left).

Rework Procedure

Note: The following restoration procedure is explained with images of the sill; however, it is also valid for problems related to the upright area.

PRELIMINARY ACTIONS: To ensure the correct application of the adhesive, it is necessary to find the necessary equipment and make sure to carry out the rework and verify that you are acting at a **temperature not lower than 18 °C** (T > 64.4 °F).

Equipment needed:

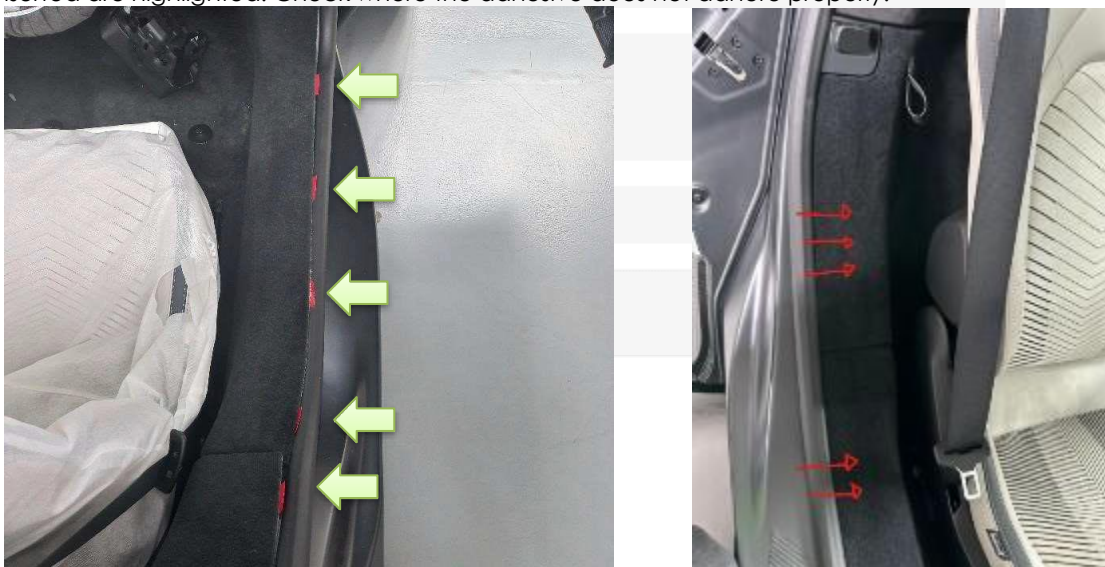
- Snap-on pliers or equivalent tools
- Teflon Bars
- Double-sided adhesive 45x45 mm
- Pressure roller or equivalent tools
- Solvent wipes type Heptane



- To facilitate the restoration of the carpets, move the door seal following the instructions in the workshop manual.

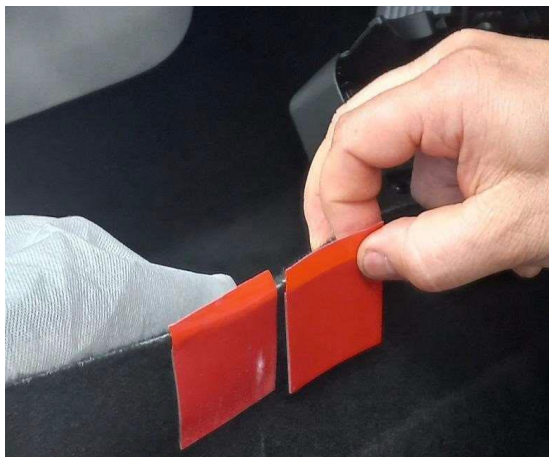
- **9.34.014 15 FRONT DOOR COMPARTMENT GASKET RIGHT**

- Identify the area where the carpet is not glued correctly. In the photo below, all the points where the glue is inserted are highlighted. Check where the adhesive does not adhere properly.



- Place the double-sided adhesive patch (PN **670219344**) next to the pre-installed one that is not properly glued.

- Using the Teflon bars and the snap clamp, squeeze the double-sided adhesive patch for **at least 1 (one) minute**.



- Using a wipe soaked in *Heptane* or equivalent solvent, **thoroughly clean** the part of the **monocoque** on which the gluing will be carried out and wait until it is **completely dry** before proceeding with gluing.



- Remove the double-sided adhesive film, be careful not to touch the adhesive part with your fingers, and reposition the mat so that the two parts adhere perfectly.
- Reposition the gasket (**G**) and press with a suitable tool, passing repeatedly on the newly reworked section, to ensure perfect gluing.



9. Restore the disassembled components in reverse of the disassembly procedure.

10. Procedure complete.

Spare Parts

The quantity of double-sided adhesive required for this reworking is a maximum of **one piece per zone**, i.e., in the worst case that all the zones are not correctly glued, **4 (four) patches per car are used**.

Description	Part number	Quantity
Double-sided adhesive (1 patch)	670219344	As needed max 4

Warranty claim

Complete the warranty claim as follows:

Description	Code
Rapid Update Number	769
Warranty Code	23
Error code	063
Part Number	9.60.003
Operation Code	
<ul style="list-style-type: none"> ▪ Check ▪ Rework (1 zone) ▪ Rework (2 zones) 	<ul style="list-style-type: none"> 9.60.003.A (0,10 h) 9.60.003.B (0,30 h) 9.60.003.C (0,40 h)