



# WORK INSTRUCTIONS

## BRINKLEY DINESK™ ADJUSTMENT

### INSTRUCTIONS

WI:	WI-006-2025 Brinkley Dinesk™ Adjustment Instructions		
PRODUCT:	All Models	REVISION:	REV-A
DATE:	January 14, 2025	LABOR RATE:	0.5 - 0.8 hrs.

**Applies to:**  
This document refers to the adjustment of a Dinesk™ system that won't close properly or is bowed up when extended.

**Condition:**  
Brinkley RV has determined that under certain conditions, a Dinesk™ may not function properly. The Dinesk™ will not retract correctly, and when extended may be slightly bowed. This document will address the adjustments needed to the Dinesk™ system to correct these concerns.

**Safety:**  
Safety is and should always be observed when performing any type of repair. ANSI (American National Standards Institute) has created a standardized labeling system for different levels of safety and danger. The label below provides information regarding those levels of danger, and should be observed and adhered to at all times.

**⚠ CAUTION**  
The “CAUTION” symbol above is a sign that a procedure has a safety risk involved and may cause personal injury, product and/or property damage if not performed safely and within the parameters set forth in this document.

**+ NOTICE**  
This is used to address best practices that should be utilized and do not commonly result in injury but may lead to property damage if not careful.

## TOOLS REQUIRED:

1. Tape Measure
2. Cordless Drill/Screw Gun
3. Belt Sander
4. #2 Square Drive Bit
5. Pencil/Pen (Not pictured)
6. Safety Glasses/Goggles (Not pictured)
7. Gloves (Not pictured)
8. Wood filler (Customer supplied)



## ⚠ CAUTION

Always wear Personal Protection Equipment (PPE), such as eye protection, ear protection, gloves and possibly a full face shield depending on the nature of the task to be performed.

## + NOTICE

Use care during the disassembly process as you will be reusing all components of the system during the adjustment and reassembly process.

## WORK INSTRUCTIONS:

1. READ AND UNDERSTAND ALL INSTRUCTIONS PRIOR TO BEGINNING WORK.
2. Identify the concern with the Dinesk™ by looking underneath the extended Dinesk™ to verify there is a larger gap at the front (Figure 1A) than at the back (Figure 1B). Also look to see if the tabletop arcs up instead of laying flat when extended (Figure 2A).
3. Measure the gap between the front of the cabinet and the bottom of the tabletop (Figure 1A) and the gap between the back of the cabinet and the bottom of the tabletop (Figure 1B). Find the difference between the two measurements and write it down. Target Measurement = (1A - 1B).  
NOTE: If you have a positive number for the Target Measurement, you will be lowering the location of the roller. If you have a negative number for the Target Measurement, you will be raising the location of the roller.



Figure 1

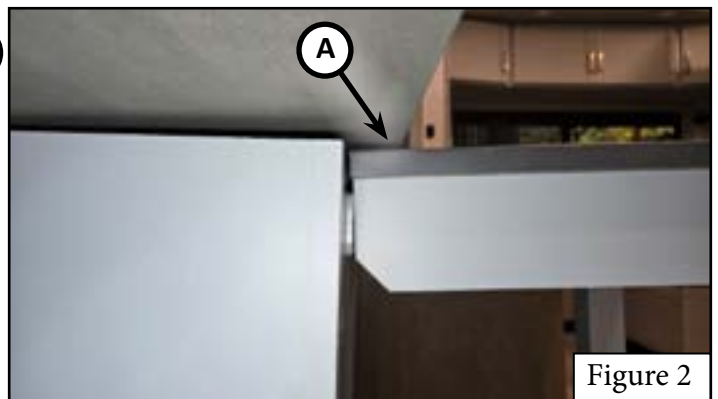
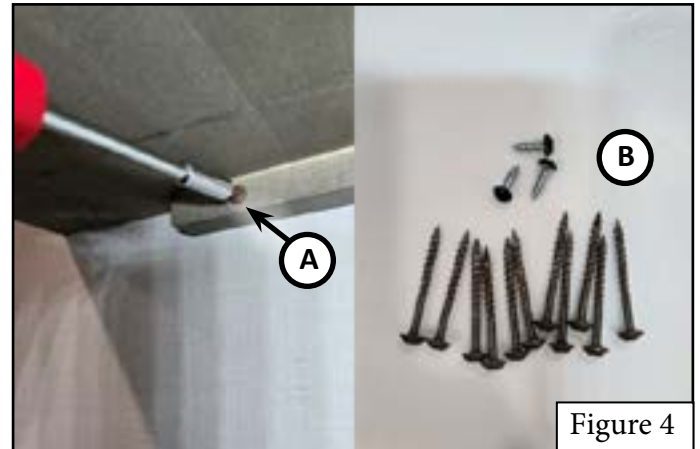
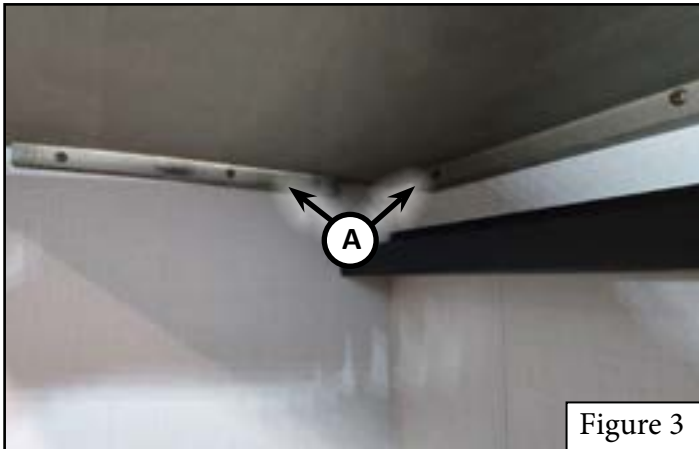
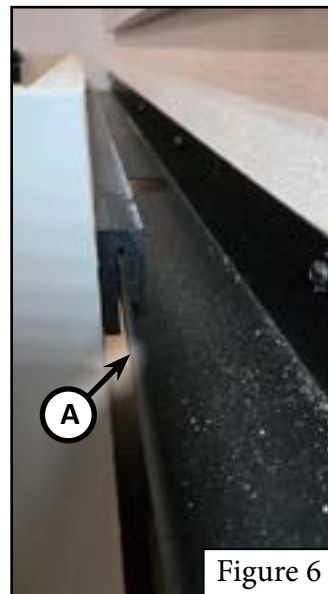


Figure 2

4. Remove the tabletop by unscrewing the cleats (Figure 3A) from the surrounding structures using a #2 square drive bit and a cordless drill/screw gun (Figure 4A). Save these screws for re-installation of the tabletop. This will allow access to the cabinet that contains the Dinesk™. Figure 4B shows the screws that were removed.



5. With the tabletop removed, you can now lift the Dinesk™ cabinet from the track it slides on (Figure 5A, 6A). Figure 7 shows the cabinet lifted from the track and set back on the floor.



6. Carefully tip the cabinet onto its side (Figure 8) to access the floor rollers (Figure 9A).
7. Use a pencil to mark the current location of the top edge of the roller mounting bracket (Figure 9B).



Figure 8



Figure 9

8. Using a screw gun and a #2 square drive bit, remove the rollers (Figure 10A). Save these screws for re-installation of the rollers.
9. Use wood filler to patch the previous screw holes (Figure 11A) and let it dry and cure according to the manufacturer's instructions.

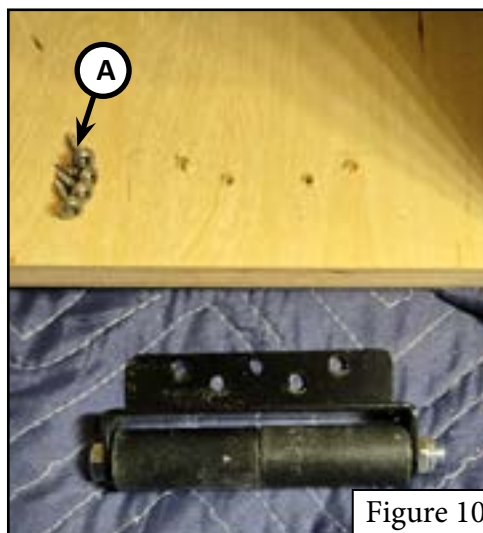


Figure 10



Figure 11



10. Measure from the original marked line (Figure 12A) a distance equal to the Target Measurement found in step 3 above and mark a new line (Figure 12B). This will be where the top edge of the mounting bracket of the roller will line up. Remember, the new position may be up or down from the original line.
11. Hold the bracket in that position and screw the bracket back into the cabinet wall using the screws previously removed (Figure 13). If the new screw locations are too close to the previous screw locations, you can slide the roller bracket over a little bit to get away from the holes.
12. Repeat steps 10 and 11 for the other roller.

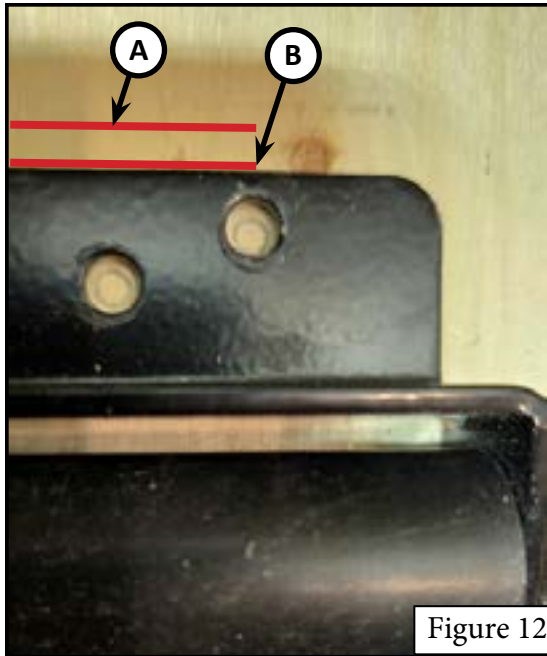


Figure 12



Figure 13

13. Flip the cabinet back upright and lift back onto the track you removed it from and test to make sure the rollers function correctly and the cabinet rolls back and forth.
14. Set the table top back in place over the cabinet and make sure the cabinet still rolls back and forth without catching on the table top. If the cabinet still functions properly, screw the table top back in place with the screws you removed in step 4.
15. Test to make sure the Dinesk™ rolls back into the cabinet properly with the table top secured in place. If it does not, you may need to adjust the rollers up or down a little bit more.
16. If the Dinesk™ now sits flat when extended (Figure 14), you have completed the adjustment. If it does not sit flat and has an arc in it (Figure 15), continue to the next page for the next steps in the adjustment process.

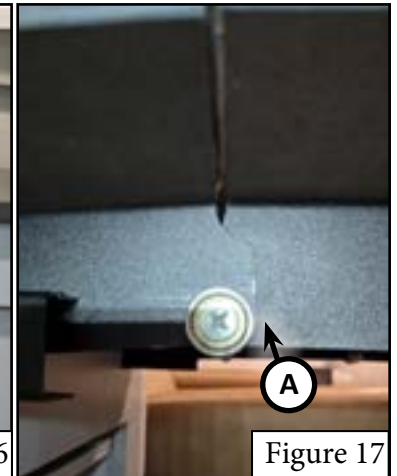


Figure 14

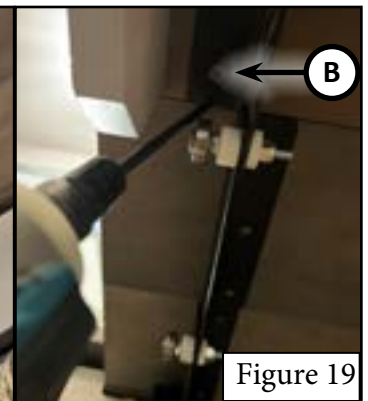
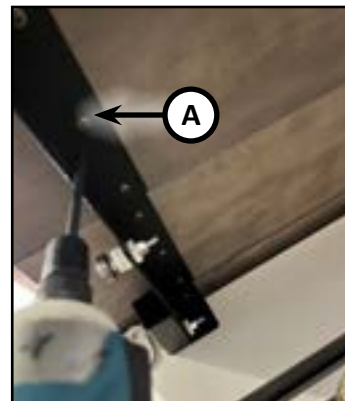
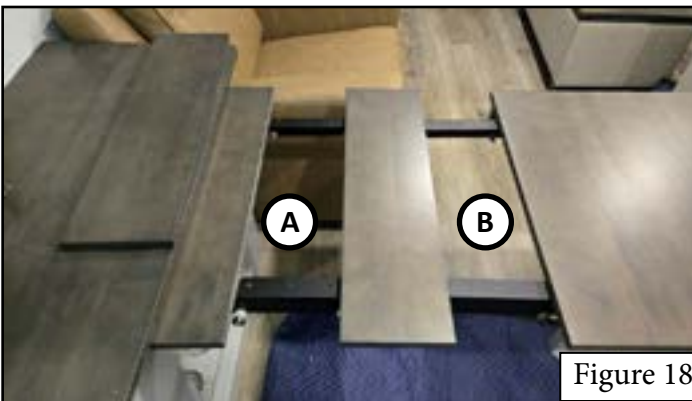


Figure 15

17. The reason there is an arc when the Dinesk™ is extended (Figure 16) is because the wood panels (4 of them - Figure 16A, B, C, D) are too tight against each other preventing the Dinesk™ brackets (Figure 17A) that allow each piece to tilt and roll into and out of the cabinet to function correctly.



18. Using a screw gun and a #2 square drive bit, remove two of the table panels (Figure 18A, B) by unscrewing the panels from the Dinesk™ brackets underneath (Figure 19A, B). The table should now lay flat (Figure 20). Save these screws for re-installation of the panels.



### ⚠ CAUTION

When using a belt sander, don't wear loose clothing, and make sure that long hair is tied back to prevent getting caught in the belt. Also be sure to secure the piece you are sanding to prevent unintended movement of the table plank. Failure to follow these steps could result in property damage or personal injury.



19. Use the belt sander to remove a very small amount of material from the table panels (Figure 21A) and test fit frequently to ensure you don't remove too much material (Figure 22). The amount of material that needs to be removed will vary from system to system.

**+ NOTICE**

Use care to limit the sanding only to the edges of the table panels that are concealed when the table is in use to prevent the exposure of unfinished wood.



20. Once enough material has been removed from the table panels so that they fit properly, the table should lay completely flat (Figure 23) and the Dinesk™ brackets (Figure 24A) will function properly.



21. After you have confirmed proper function, reinstall the panels back into the Dinesk™ with the previously removed screws and close the Dinesk™.

