



STAR ONLINE PUBLICATION



Case Number: S2508000002

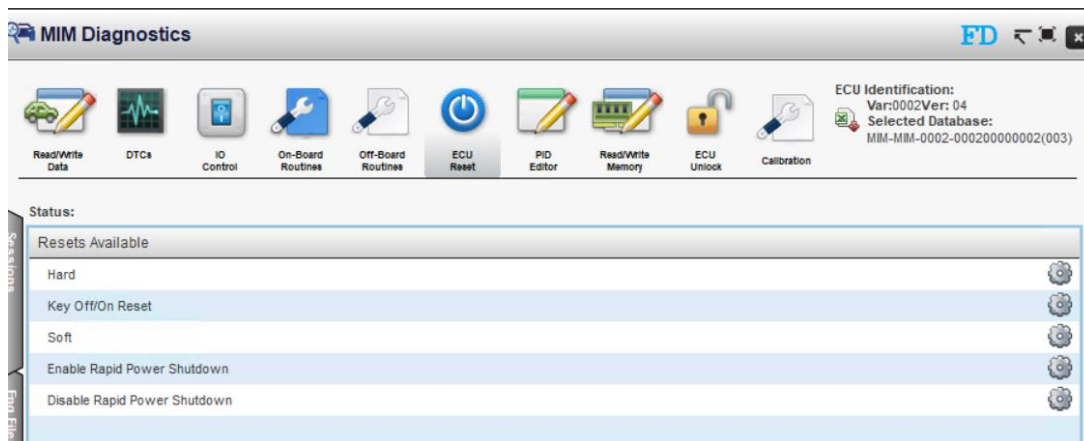
Release Date: January 2025

Symptom/Vehicle Issue: Mapping Interface Module (MIM) Erroneously Sets Diagnostic Trouble Codes (DTCs) B023C-49 and or U115C-00

Technician Observation: Technician observed the MIM module setting DTCs B0239C-49 DASHCAM Module 1 Internal Electronic Failure and/or U115C-00 Lost Communication With ETM, and no associated owner complaints.

Repair Procedure: If these DTCs are observed, clear the DTCs, perform a module hard reset, (CDA required for hard reset) and then allow a sleep cycle. Re-connect the scan tool and verify that the DTCs do not return, if the DTCs do return, then continue with the Service Library (SL) diagnostic procedure(s) as needed. Engineering is investigating system updates to resolve conditions that are erroneously setting these DTCs. The estimates for an update are targeted sometime in the 1st quarter of 2025.

CDA option location: Onboard routines, Resets available – Hard - ECU reset:



This document does not authorize warranty repairs. This communication documents a record of past experiences. STAR Center Online does not provide any conclusions about what is wrong with the vehicle. Rather, it captures all previous cases known that appear to be similar or related to the vehicle symptom / condition. You are the expert, and you are responsible for deciding on the appropriate course of action.