

## Technical product information

<b>Topic</b>	Measured values - Cycle recording instructions
<b>Market area</b>	Bentley: worldwide (2WBE), China 796 VW Import Comp. Ltd (Vico), Beijing (6796)
<b>Brand</b>	Bentley
<b>Transaction No.</b>	2074960/2
<b>Level</b>	EH
<b>Status</b>	Approval
<b>Release date</b>	

### New customer code

Object of complaint	Complaint type	Position
vehicle service -> vehicle diagnosis -> guided fault finding	control units, services -> with event log entry	
vehicle service -> service, maintenance -> repair execution	service: process -> with determination of concern	
vehicle service -> IT systems -> SVM (software version management)	control units, services -> error message	

## Vehicle data

### New Continental GT / C and New Flying Spur

#### Sales types

Type	MY	Brand	Designation	Engine code	Gearbox code	Final drive code
Z23*	2025	E		*	*	*
Z24*	2025	E		*	*	*
Z32*	2025	E		*	*	*

## Documents

Document name
<a href="#">master.xml</a>

---

## Customer statement / workshop findings

In some cases Measured value traces may be requested in XML format for analysis by Product Support

## Technical background

The instructions within the Measure section of this TPI have been generated to guide operatives through the process for recording Measured values in cycles by using self diagnosis, the Instructions also detail how to locate corresponding files which are required for analysis

Product Support will advise regarding the Measured values and cycle time required

## Production change

Not applicable

## Measure

1) From self diagnosis - Select the Measured values for the required control unit (Figure 1)

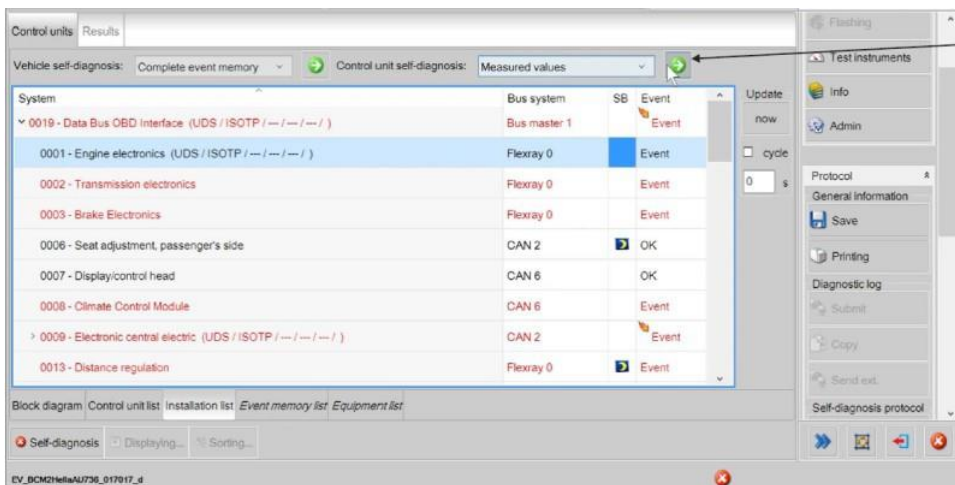


Figure 1

2) Select the required Measured values (Figure 2)

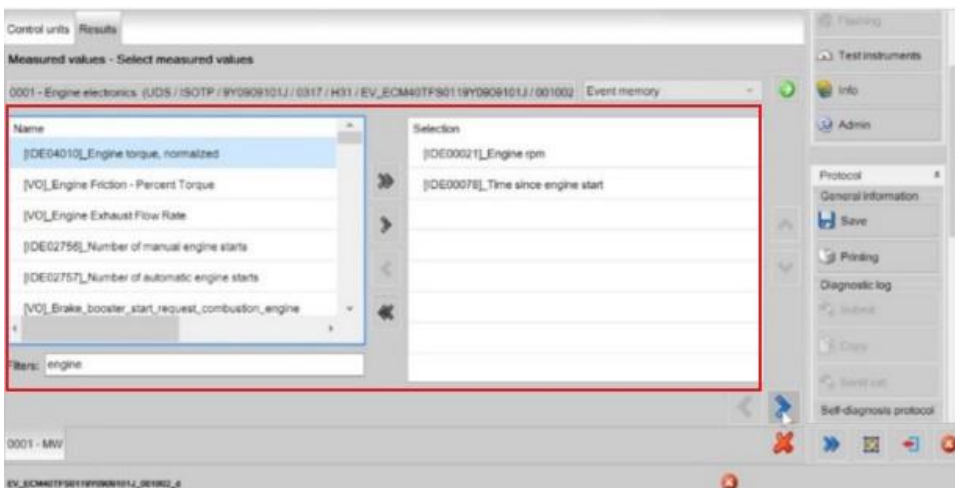


Figure 2

3) Referring to Figure 3 - Ensure Cycle is selected (ticked)

- Ensure the update time is set to an appropriate value (0 seconds should be selected in most cases)

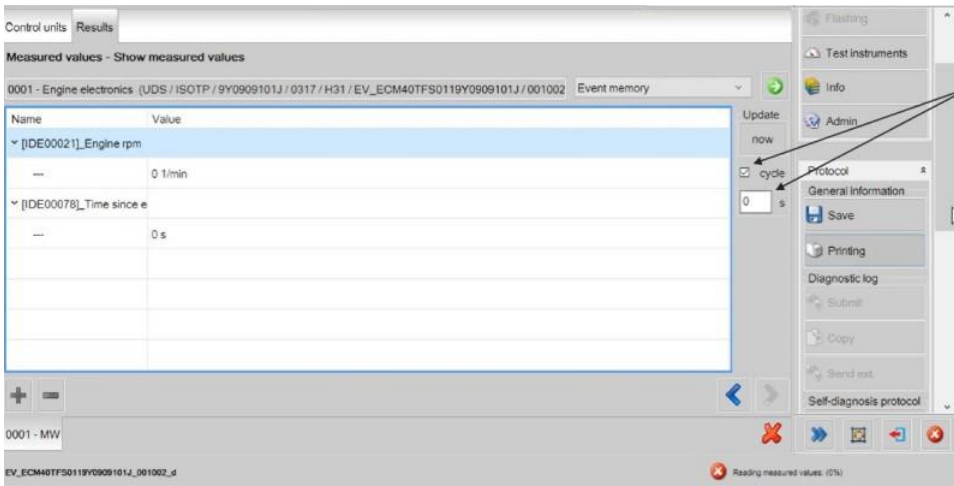


Figure 3

4) Referring to Figure 4 - From the side tool bar start a new Self-diagnosis protocol

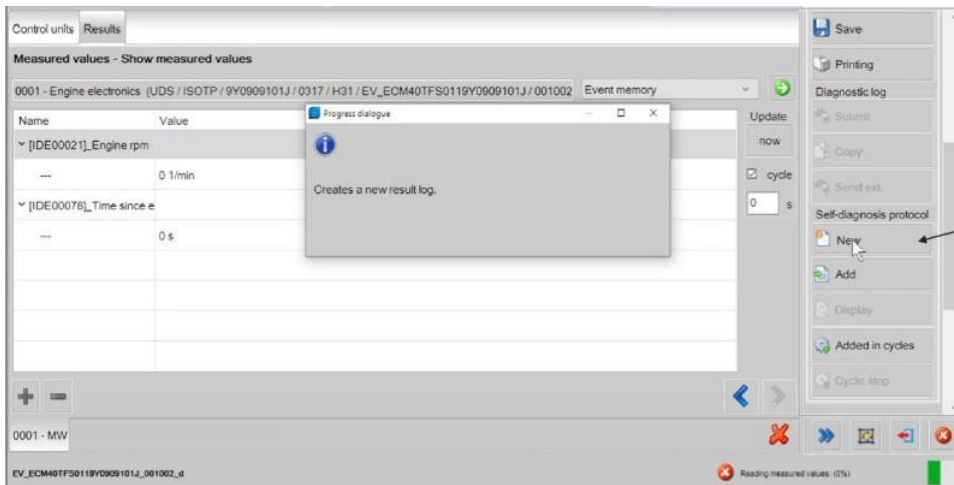


Figure 4

5) Select Added in cycles (Figure 5)

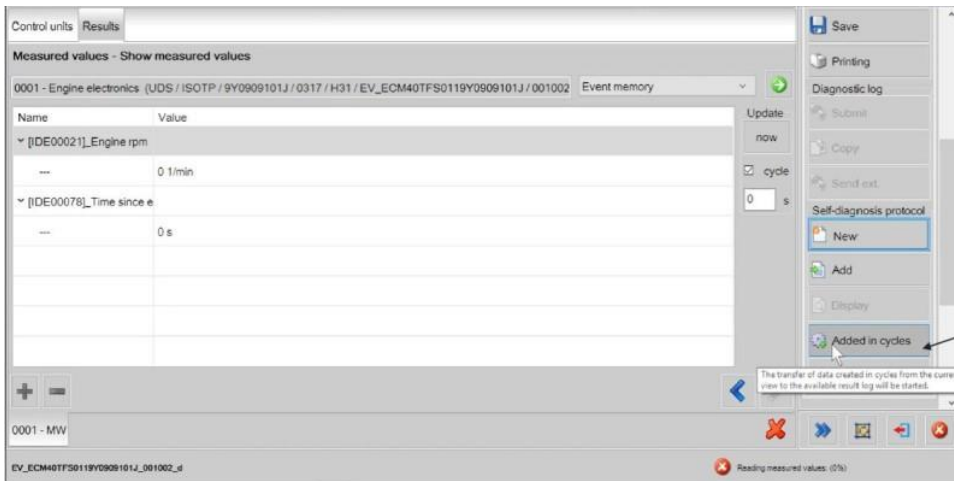


Figure 5

**NOTICE**  
Data will now be added automatically to the diagnosis log once Added in cycles is pressed

6) Select Cyclic stop as soon as the relevant data is collected to prevent excess redundant data (Figure 6)

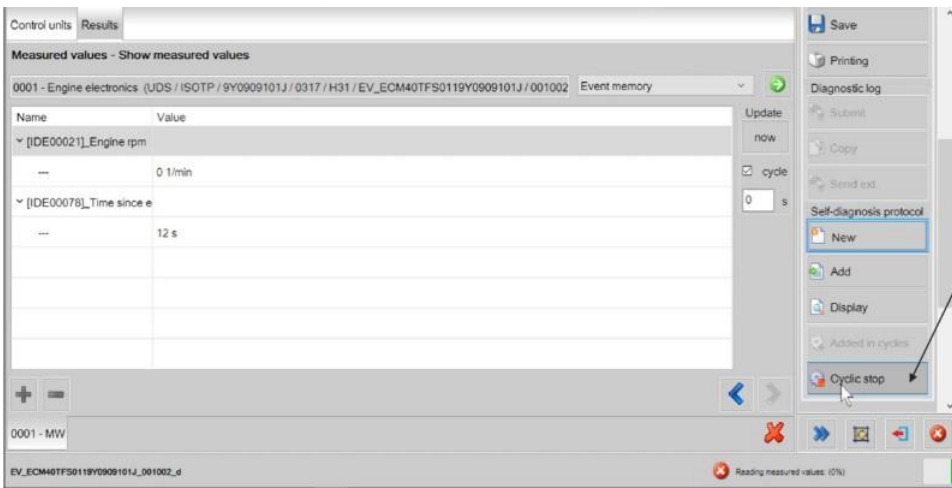


Figure 6

7) Select Display (Figure 7) this will save the log in HTML and XML format and open the HTML file

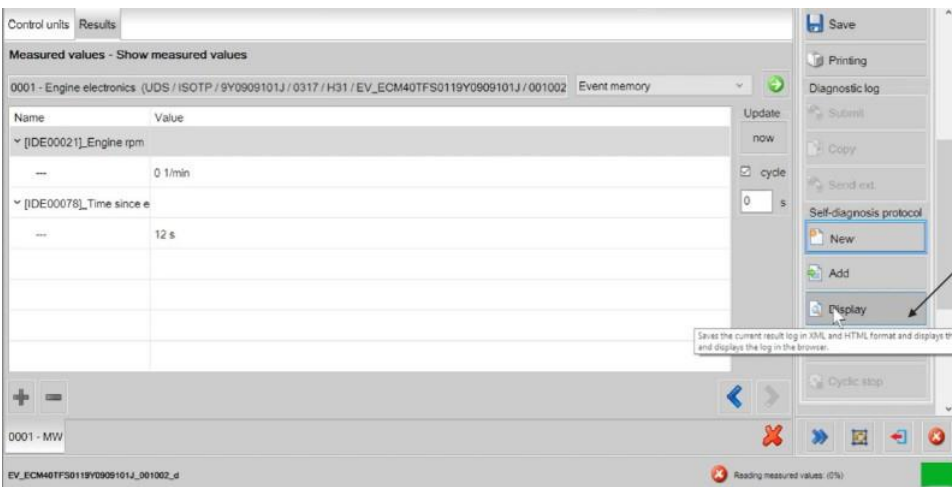


Figure 7

8) The location of the files will be displayed in the now open HTML file (Figure 8)

**NOTICE**  
 If this location is not visible it may be hidden, please see further information shown in Figure 9

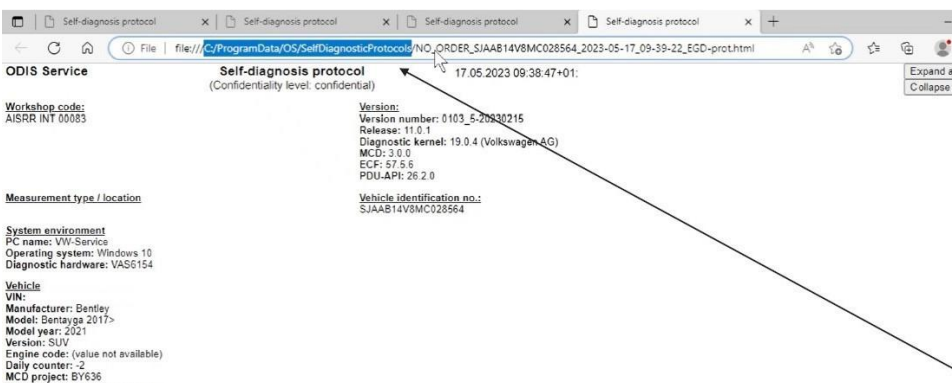


Figure 8

**NOTICE**  
 In the event that the XML file cannot be attached to the DISS query please email the file to [Product.support@bentley.co.uk](mailto:Product.support@bentley.co.uk) ensuring the DISS number is included in the subject

9) Referring to Figure 9 - Access the program data for ODIS-your Windows (C:)drive



Please beware that in some cases the "Program Data" folder may need to be unhidden  
 Navigate through: File > Folder Options > View > Show Hidden Files, folders and drives

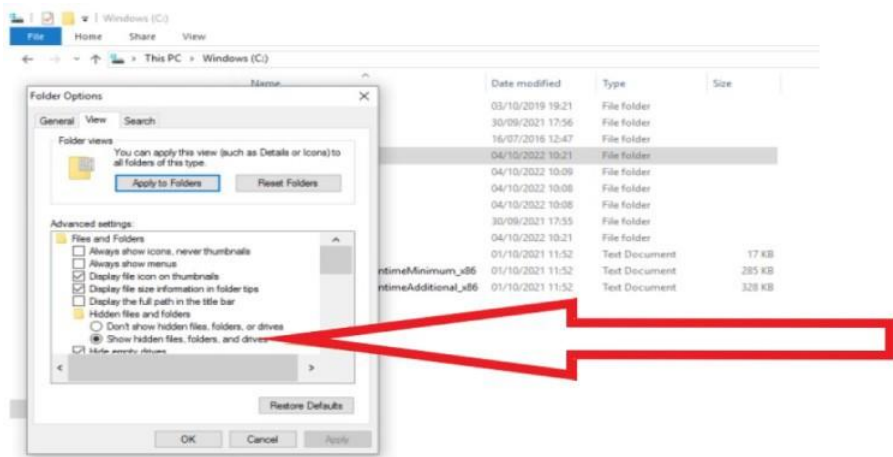


Figure 9