



CS
area

005 -24 MV
n°

Technical Bulletin

Date: **11 December 2024**

Subject: **MCU cod. SPMV8000D1269**

Product: **LXP 950 Orioli \ Enduro Veloce**

Failure of the dealer to attend to this in a timely manner results in MV Agusta no longer being obligated to release the defaulting dealer from liability in the case of product liability claims. As a result, the dealer shall become subject to liability and/or responsible for recourse.

Basic information:

In the course of continuous product improvement and further development, the MCU equipped on the models Enduro Veloce and LXP has been improved with an upgraded hardware. The target of the improvement is to avoid potential power supply problems of the GPS and IMU systems during the vehicle ignition phase.

The new MCU unit has got the new code SPMV8A00D1269.

In the event that **“IMU LINK” and “GPS LINK” faults occur at the same time when the vehicle is turned on** (key ON) the issue can be directly related to the MCU driver that won't ensure the proper power supply to the two devices.

The errors previously indicated are attributable to the power supply by the MCU only when both appear and at the time of the initial vehicle check (key ON).

In this case it will be possible to proceed with the replacement of the MCU under the actual warranty policies equipping the bike with the upgraded unit code SPMV8A00D1269. It is needed to provide a documentation of the error occurring, please check the warranty table at the end of the document for more information.

Repair/conversion process:

A description of general workshop instructions will be dispensed with. Likewise, safety rules, as apply in the everyday workshop routine, will not be listed. It is assumed that the repair will be carried out by a trained or appropriately qualified mechanic. The most recent repair manual is definitive in cases where there is a lack of clarity.

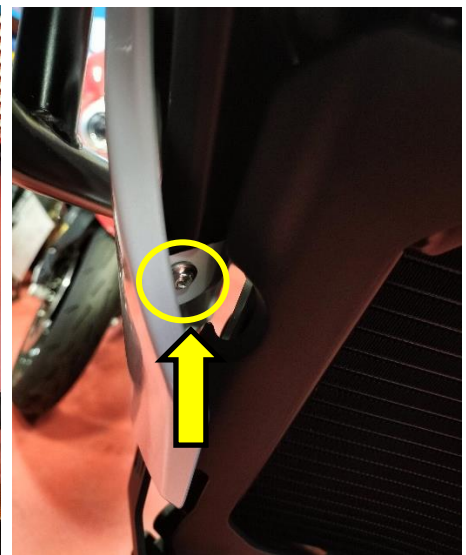
For the purposes of clarity, some parts may have been removed or are not depicted. Removal for the corresponding description is not always strictly necessary. Please follow the instructions in the text.

Tools required for the intervention:

- Allen key 4 mm
- Torque range key 10 Nm
- Phillips screwdriver
- Motul top Grease 400

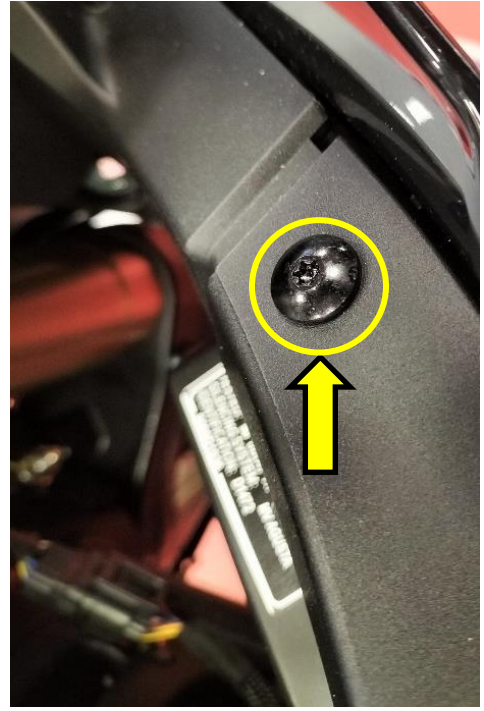
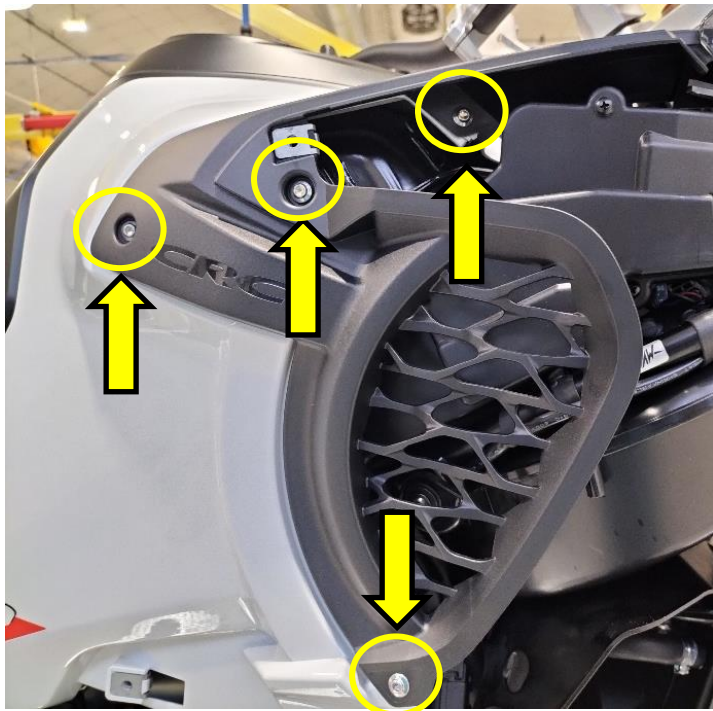
Intervention procedure:

- Place the motorcycle on the central stand.
- Remove the right-side pannier operating on the screws indicated in the pictures and disconnecting the right turn signal:

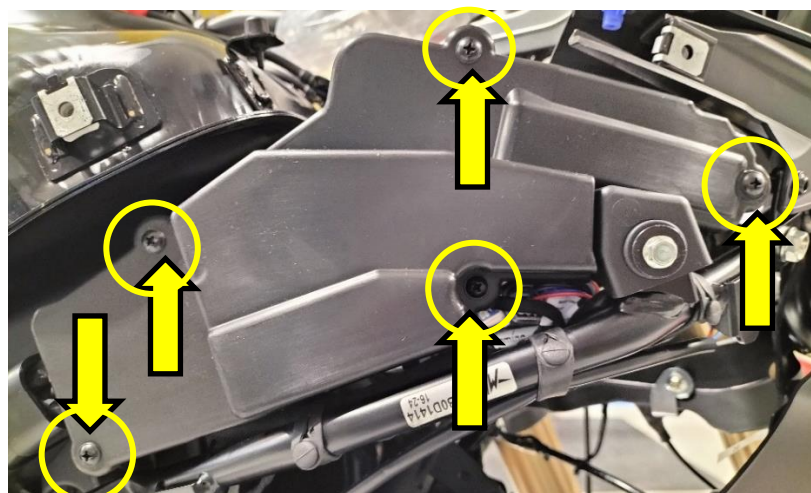


NOTE: it is possible to extract the side panel even if the vehicle is equipped with the bullbar, by slightly flexing the front part of the fairing in order to extract the front fixing point of the same passing it between the bike and the bullbar. Be careful not to damage the paint against the bullbar.

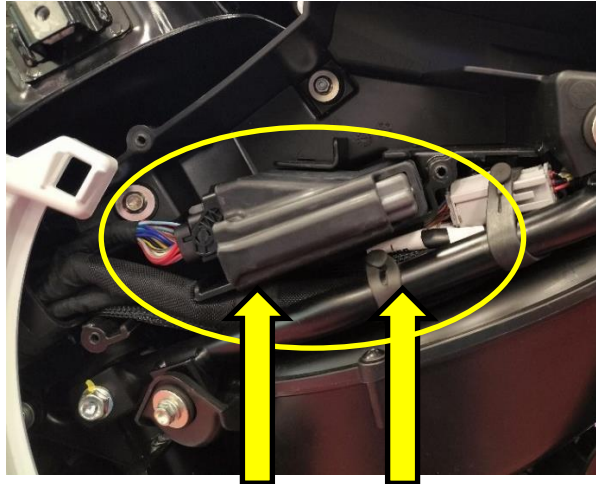
- Remove the air extractor by acting on the screws indicated in the picture:



- Remove the control unit support cover using an adequate Phillips screwdriver:



- Disconnect and remove the MCU module cod. SPMV8000D1269;



- **The removed MCU module must not be reused and it must be mandatorily scrapped as reported in the picture below: please make a drill hole in the old MCU body.**
NOTE: It will be mandatory to provide photographic proof of the scrapping of the old part in the warranty claim. In absence of the same, the warranty claim cannot be accepted.



- Part's identification: the MCU can be identified by the code reported on the sticker on the MCU's body.
SPMV8000D1269 → old MCU
SPMV8A00D1269 → new MCU



- Install the new MCU module cod. SPMV8A00D1269 paying attention to the wire's routing:



- Reassembly the control unit support cover tightening the screws with a torque of 6 Nm.
- Reassembly the air extractor tightening the screws with a torque of 10 Nm.
- Reconnect the right turning signal and reassembly the right fairing tightening the screws with a torque of 10 Nm.
- Connect the bike to the XC2 diagnostic system and to the battery charger in “power supply” mode and erase eventual DTCs present in the different environments.
- Perform a dynamic test of the vehicle to confirm compliance.

Details for warranty application:

Warranty type:	Manufacturer warranty
Damage code:	700 – Series improvement
Part causing failure:	MCU cod. SPMV8000D1269
Parts:	MCU cod. SPMV8A00D1269
Documentation:	Diagnostic Log – key ON video with DTC – picture of the drilled old MCU
Labor time:	20 minutes
Are stock items affected	No
Validity:	24 months from delivery date/invoice date

Please note:

No mobility services for the customer can be submitted via the warranty channel for the execution of this Technical Bulletin

Thanking you in advance for your cooperation, we remain at your disposal for any technical/commercial support.

Kind regards,

MV AGUSTA MOTOR S.p.A.

Servizio Assistenza Tecnica – Customer Service

L. Martin	L. Girardin	A. Volpini
Managing Director	Head of Quality	R&D Director MV & CRC