



## Fiberglass Front Wall Replacement

<b>Bulletin Type:</b>	SRP	<b>Publication Date:</b>	December 2024
<b>Bulletin #(s):</b>	24-018	<b>Make(s):</b>	Jayco
<b>Job Code(s):</b>	<i>If affected unit has warranty remaining, submit your claim following the normal process</i>	<b>Model(s):</b>	Jay Feathers (Fiberglass)
<b>Flat Rate(s):</b>		<b>Model Year(s):</b>	2025

<b>Incident:</b>	Top of the front wall cracking where it curves and meets the roof.		
<b>Affected Units:</b>	2025 Jayco Jay Feather		
<b>Parts List:</b>	#8 Screws Corner trim Horizontal trim		
<b>Misc. Tools &amp; Supplies:</b>	Screw driver with square bit Heat Gun Putty knife Caulk gun	Seal Butyl tape Self-leveling roof sealant	

## Stick and Tin Front Wall Replacement

<b>Bulletin Type:</b>	SRP	<b>Publication Date:</b>	December 2024
<b>Bulletin #(s):</b>	24-018	<b>Make(s):</b>	Jayco
<b>Job Code(s):</b>	<i>If affected unit has warranty remaining, submit your claim following the normal process</i>	<b>Model(s):</b>	Jay Feathers (Stick & Tin)
<b>Flat Rate(s):</b>		<b>Model Year(s):</b>	2025

<b>Incident:</b>	Top of the front wall cracking where it curves and meets the roof.		
<b>Affected Units:</b>	2025 Jayco Jay Feather		
<b>Parts List:</b>	#8 Screws Corner trim	Horizontal trim	
<b>Misc. Tools &amp; Supplies:</b>	Screw driver with square bit Heat Gun Putty knife Caulk gun	Seal Butyl tape Self-leveling roof sealant	

# FIBERGLASS FRONT WALL REPLACEMENT INSTRUCTIONS

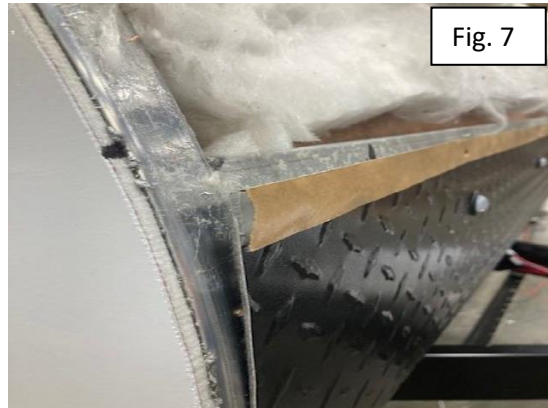
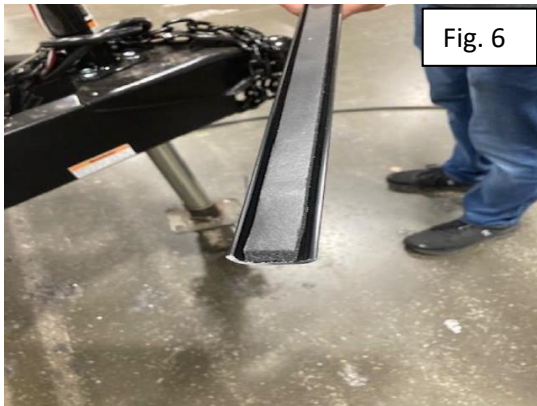
1. Prep Front wall skin, locate and drill clearance light holes as needed
  - Note: Reference original locations on front wall (Figure 1)



2. Align the front wall skin. (Figures 2-5)
  - Note: front wall metal backer should be parallel to the floor)



3. Use butyl tape on top edge of diamond plate and foam tape on inside of horizontal trim. (Figures 6-8)



4. Align fiberglass to fit over the top of diamond plate (approx. 1" overlap) and flush and square to both sidewalls. Add 2 temporary screws approx. 24" above the bottom edge of the fiberglass. Keep front wall square and flush to sidewalls Reinstall diamond plate trim. (Figures 9-10)



5. As the corner trim is attached, remove the 2 temporary screws working from bottom to top, equally both sides. (Figure 11)

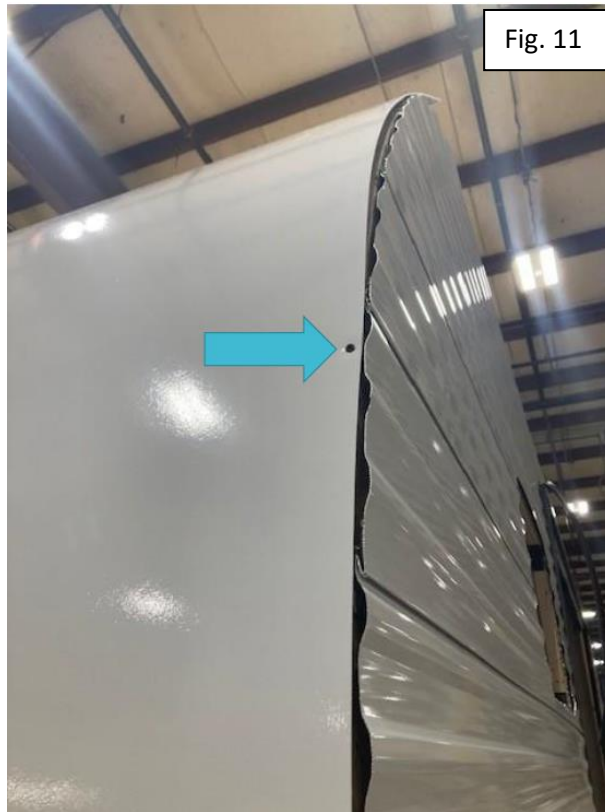


Fig. 11

6. Fish clearance lights wires through holes before attaching corner trims all the way up. (Figures 12-14)



Fig. 12



Fig. 13

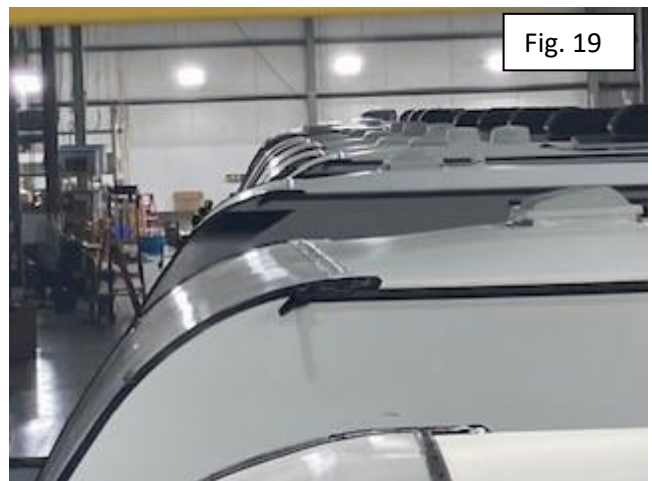


Fig. 14

7. Work any bubbles or wrinkles of fiberglass towards the top and out to sides to create a tight, smooth appearance to the front wall. (Figures 15-16)



8. Working from the center outwards. Screw the top edge of fiberglass to roof deck on top of the roof membrane with the top trim. (Figure 17)
9. Add self-leveling sealant to roofline trim and black caulk to side edges as shown in figures 18-19.



10. Seal where front wall and side wall trims meet with black caulk. Seal sides of corner trims with clear caulk. (Figure 20)



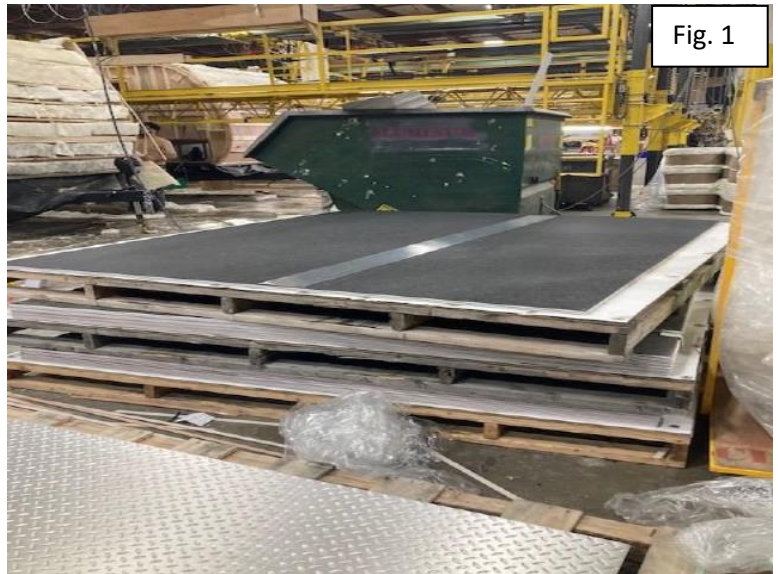
11. Reinstall clearance light with screws and add light covers. (Figure 21)

12. Reinstall screw covers to corner trims. (Figure 22)



## FRONT WALL REPLACEMENT STICK & TIN INSTRUCTIONS

1. Prep Front wall skin, locate and drill clearance light holes as needed
  - Note: Reference original locations on front wall (Figure 1)



2. Align front wall skin
  - Note: Front wall metal backer should be parallel to the floor.



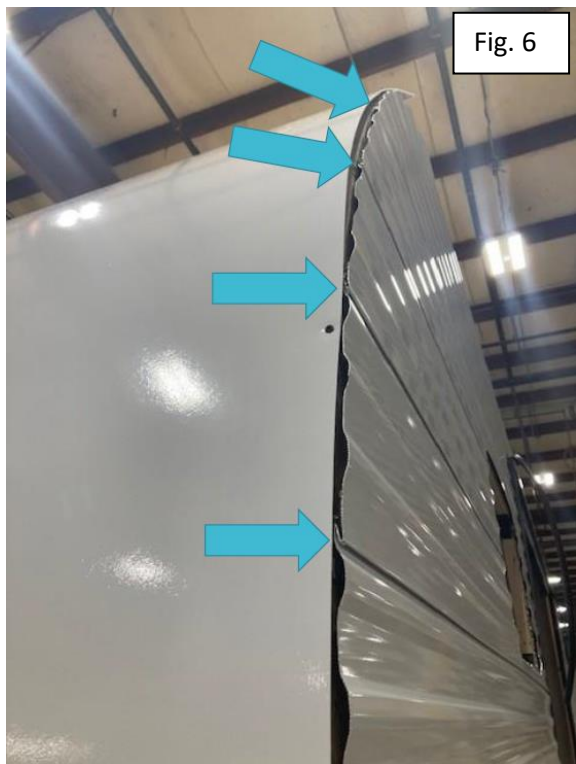
3. Align fiberglass to fit under diamond plate (approx. 1" overlap) and flush and square to both sidewalls. Tack bottom edge of fiberglass to the front wall framing. Add 2 temporary screws approx. 24" above the bottom edge of the fiberglass. Keep front wall square and flush to sidewalls. Caulk the bottom end of the fiberglass.



4. Staple top edge of diamond plate over fiberglass.



5. Caulk at all mesa joints at front wall before adding corner trim on units with mesa side walls. (Figure 6)



6. Remove the two temporary screws as the corner trim is attached working from bottom to top. (Figure 7)



Fig. 7

7. Fish clearance lights wires through holes before attaching corner trims all the way up. (Figures 8-9)



Fig. 8



Fig. 9

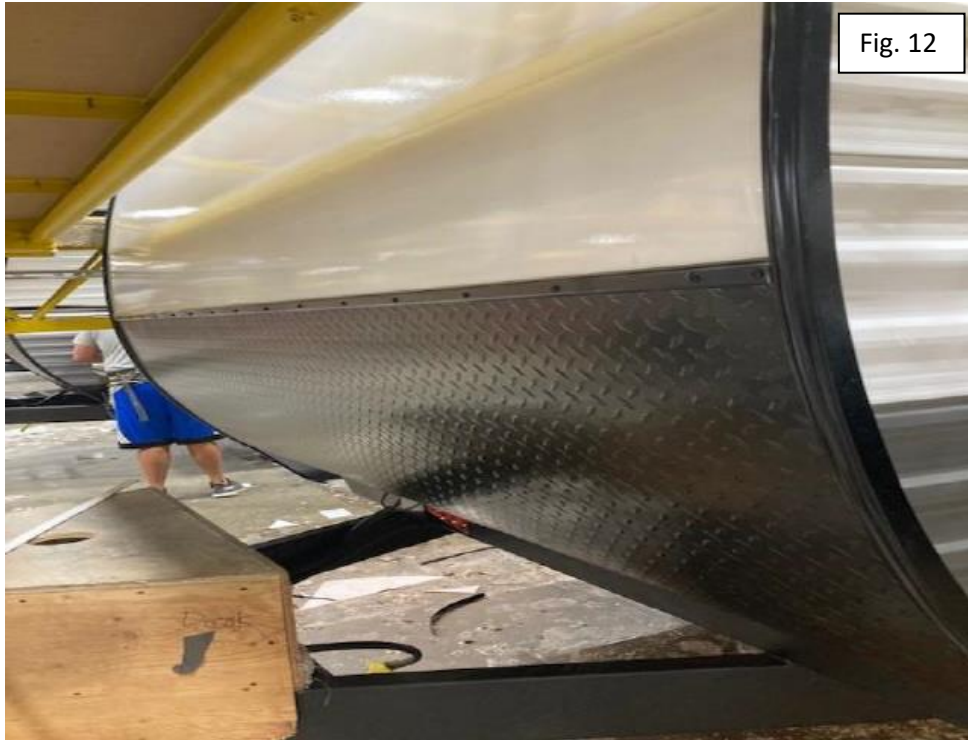
8. Work any bubbles or wrinkles of fiberglass towards the top to create a tight, smooth appearance to the front wall. (Figure 10)



9. Screw the top edge of fiberglass to roof deck over roof membrane. Then add top trim and screw to roof deck. (Figure 11)



10. Reinstall horizontal trim on top edge of the diamond plate. Reinstall corner trims working both sides equally from bottom to top. (Figure 12)



11. Reinstall screw covers to corner trims. (Figure 13)



12. Add self-leveling sealant to roofline trim and black caulk to side edges as shown in figure 14.



Fig. 14

13. Seal where front wall and side wall trims meet. Seal sides of corner trim from top to bottom. (Figures 15-16)



Fig. 15



Fig. 16

14. Reinstall clearance light with screws and add light covers (Figure 17)



*Jayco's sole obligation under our limited warranty is to repair or replace defective materials and/or workmanship deemed our responsibility as determined by Jayco in our sole discretion. Jayco reserves the right to use new and/or remanufactured parts or materials of similar quality to complete any work, and to make parts and/or design changes as appropriate without notice to anyone. Jayco designs and/or materials changes are done without obligation to incorporate such changes in previously manufactured product. Jayco makes every reasonable effort to ensure field remedies will not adversely affect performance and/or safety of the unit. This field remedy is not intended to extend to future performance of this RV, or any of its materials, components or parts beyond the standard warranty period. The RV owner's obligation to notify Jayco, or one of its independent, authorized dealers, of a claimed defect does not modify any obligation placed on the RV owner to contact Jayco directly when attempting to pursue remedies under state or federal law.*

903 South Main Street • P.O. Box 460 • Middlebury, IN 46540