



Service Bulletin

Bulletin No.: 24-NA-025

Date: November, 2024

TECHNICAL

Subject: Check Engine Light or Malfunction Indicator Lamp Illuminated with DTCs U0401 and/or U1611 Set

This Service Bulletin replaces PIC6534. Please discard PIC6534.

Brand:	Model:	Model Year:		VIN:		Engine:	Transmission:
		from	to	from	to		
Chevrolet	Corvette Z06	2024	2025	—	—	5.5L (LT6)	M1M

Involved Region or Country	North America, Europe, Middle East, Israel, Japan, Thailand, Australia/New Zealand
Condition	Some customers may comment on a Check Engine Light (CEL) or a Malfunction Indicator Light (MIL) being displayed on the Instrument Panel Cluster (IPC) of the vehicle. No driveability concerns will be found. Service technicians may find U0401 set in the Transmission Control Module (TCM) and/or U1611 set in the Body Control Module (BCM) on a Z06. The codes will likely be in History when scanned, please proceed with applying this bulletin.
Cause	The cause of the condition may be a software anomaly.
Correction	Note: Only 2025 Z06 models presently have a solution. Please DO NOT reprogram a 2024 model year Z06 at this time for this concern. A solution for 2024 is forthcoming. For model year 2025, the solution is contained in two separate control modules. Please reprogram BOTH the K20 Engine Control Module AND the K71 Transmission Control Module. Important: Record the ECM Warranty Claim Code to submit and add the TCM Warranty Claim Code in the Correction comments section of the repair order.

Service Procedure

Important: Service agents must comply with all International, Federal, State, Provincial, and/or Local laws applicable to the activities it performs under this bulletin, including but not limited to handling, deploying, preparing, classifying, packaging, marking, labeling, and shipping dangerous goods. In the event of a conflict between the procedures set forth in this bulletin and the laws that apply to your dealership, you must follow those applicable laws.

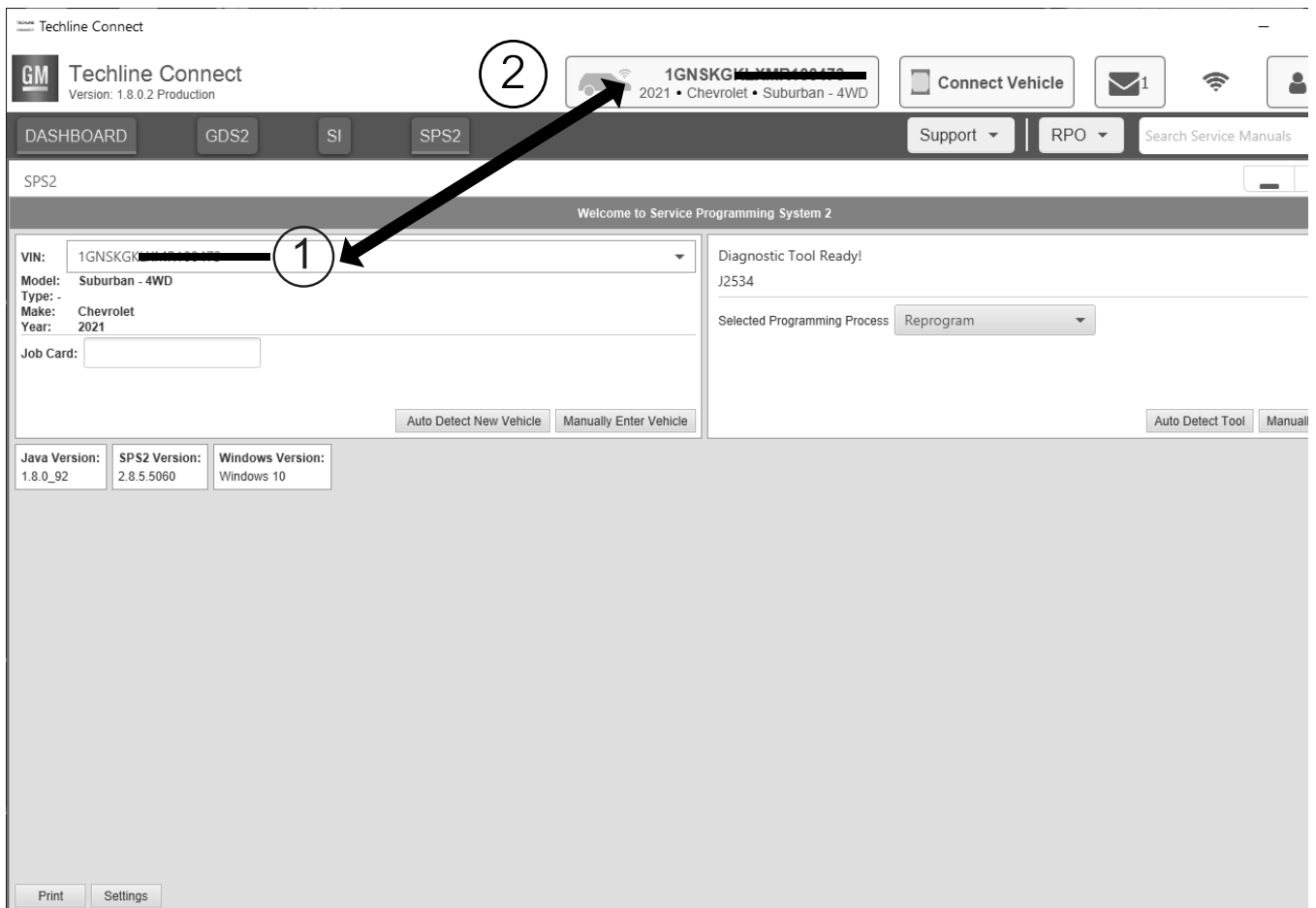
Caution: Before downloading the update files, be sure the computer is connected to the internet through a network cable (hardwired). DO NOT DOWNLOAD or install the files wirelessly. If there is an interruption during programming, programming failure or control module damage may occur.

- Ensure the programming tool is equipped with the latest software and is securely connected to the data link connector. If there is an interruption during programming, programming failure or control module damage may occur.
- Stable battery voltage is critical during programming. Any fluctuation, spiking, over voltage or loss of voltage will interrupt programming. Install a GM Authorized Programming Support Tool to maintain system voltage. Refer to www.gmdesolutions.com for further information. If not available, connect a fully charged 12V jumper or booster pack disconnected from the AC voltage supply. DO NOT connect a battery charger.
- Follow the on-screen prompts regarding ignition power mode, but ensure that anything that drains excessive power (exterior lights, HVAC blower motor, etc) is off.
- Clear DTCs after programming is complete. Clearing powertrain DTCs will set the Inspection/Maintenance (I/M) system status indicators to NO.

Important: The service technician always needs to verify that the VIN displayed in the TLC left side drop down menu and the top center window match the VIN plate of the vehicle to be programmed prior to using Service Programming System 2 (SPS2) for programming or reprogramming a module.

- For the TLC application, service technicians need to always ensure that the power mode (ignition) is “ON” before reading the VIN from the vehicle’s VIN master module and that they do not select a VIN that is already in the TLC application memory from a previous vehicle.
- If the VIN that shows up in the TLC top center window after correctly reading the VIN from the vehicle does not match the VIN plate of the vehicle, manually type in the VIN characters from the vehicle VIN plate into the TLC top center window and use these for programming or reprogramming the subject module with the correct vehicle VIN and software and/or calibrations.
- The Engine Control Module (ECM) is the master module (for VIP vehicles) that TLC reads to determine the VIN of the vehicle. If the VIN read from the vehicle by TLC does not match the VIN plate of the vehicle, the ECM also needs to be reprogrammed with the correct VIN, software and calibrations that match the vehicle’s VIN plate.
- The Body Control Module (BCM) is the master module (for GEM vehicles) that TLC reads to determine the VIN of the vehicle. If the VIN read from the vehicle by TLC does not match the VIN plate of the vehicle, the BCM also needs to be reprogrammed with the correct VIN, software and calibrations that match the vehicle’s VIN plate.

Caution: Be sure the VIN selected in the drop down menu (1) is the same as the vehicle connected (2) before beginning programming.

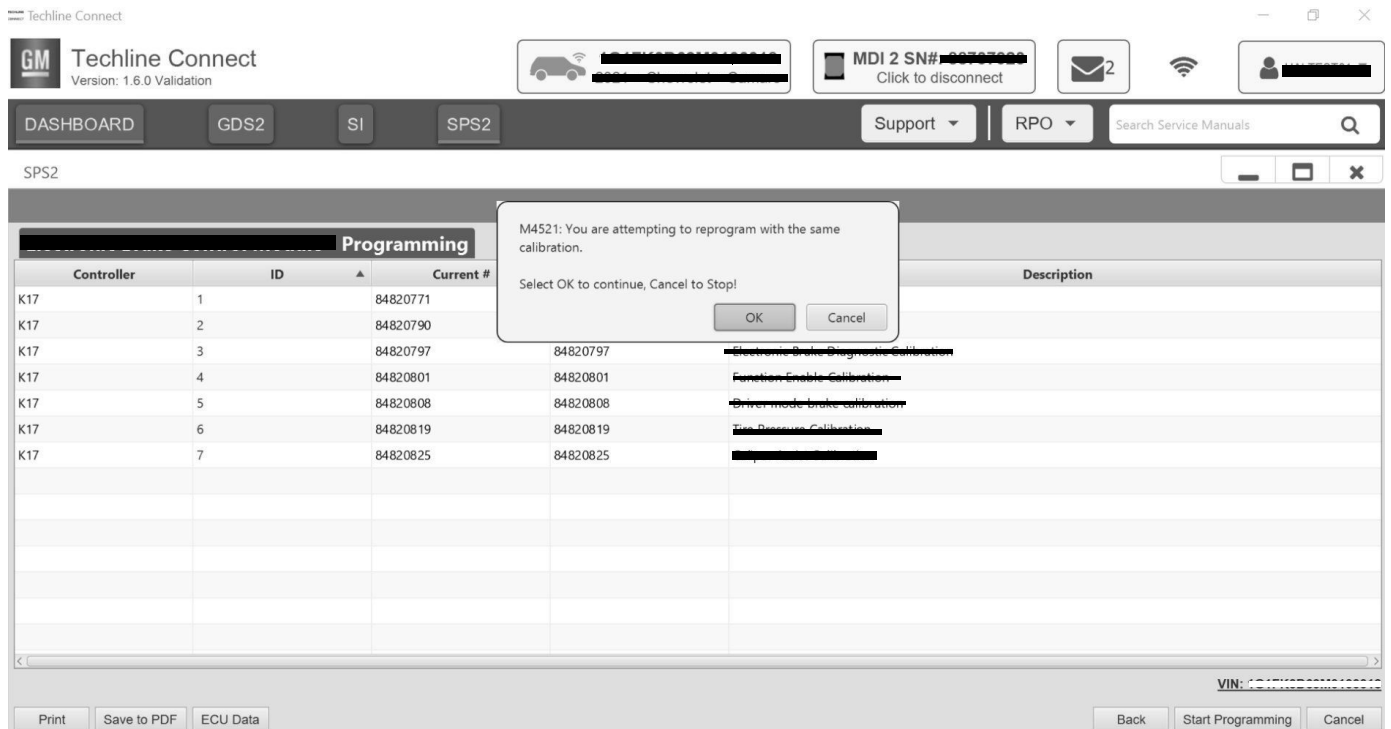


5743643

Important: If the vehicle VIN DOES NOT match, the message below will be shown.



5877000

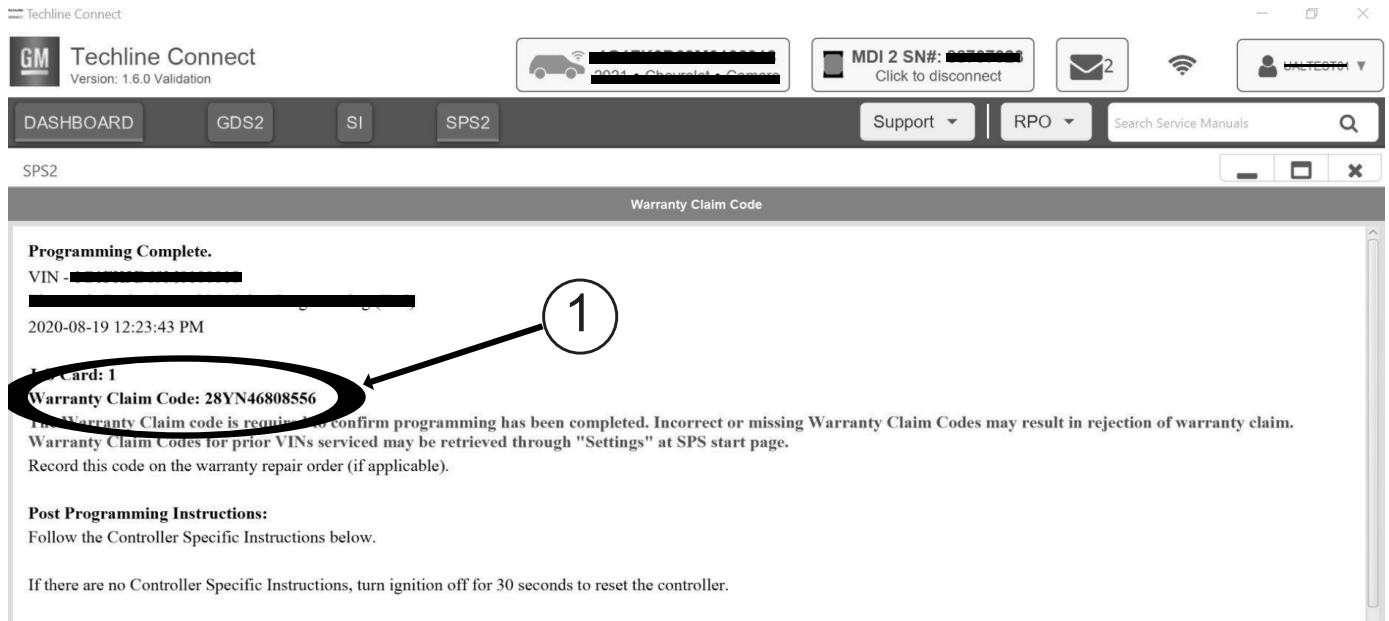


5644477

Important: Techline Connect screen shown above.

Important: If the same calibration/software warning is noted on the TLC Summary screen, select OK and follow screen instructions. After a successful programming event, the WCC is located in the Service Programming System dialogue box of the SPS Summary screen. Record the WCC on the job card. No further action is required. Refer to the Warranty Information section of the bulletin.

1. Reprogram the Engine Control and Transmission Control Modules. Refer to *K20 Engine Control Module: Programming and Setup* and *K71 Transmission Control Module: Programming and Setup*.



5644478

Note: The screenshot above is an example of module programming and may not be indicative of the specific module that is being programmed. Module selection and VIN information have been blacked out.

Important: To avoid warranty transaction rejections, you **MUST** record the warranty claim code provided on the Warranty Claim Code (WCC) screen shown above on the job card. Refer to callout 1 above for the location of the WCC on the screen.

2. Record the SPS Warranty Claim Code on the job card for warranty transaction submission.

Important: Record the ECM Warranty Claim Code to submit and add the TCM Warranty Claim Code in the Correction comments section of the repair order.

Warranty Information

For vehicles repaired under the Emission coverage, use the following labor operation. Reference the Applicable Warranties section of Investigate Vehicle History (IVH) for coverage information.

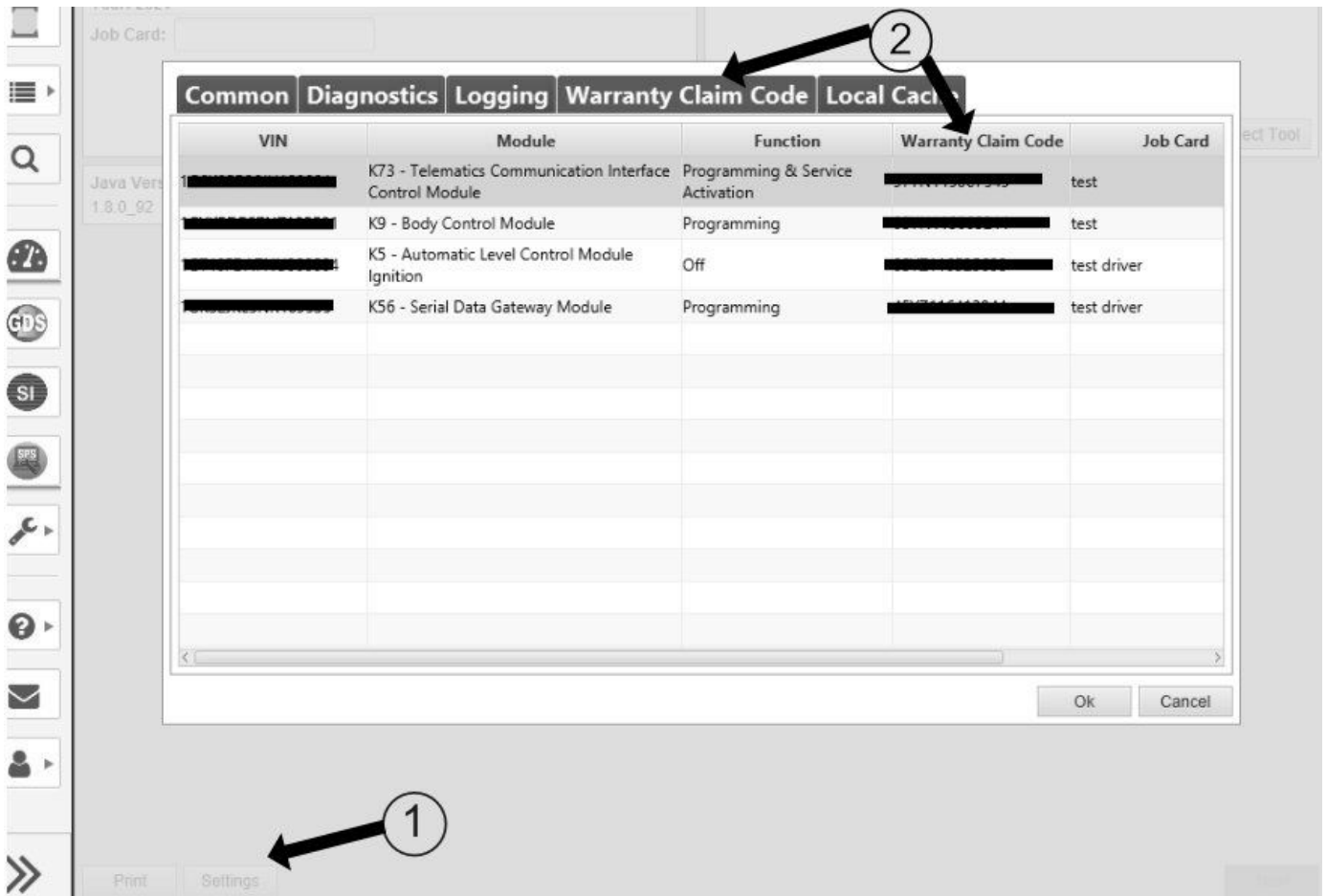
Labor Operation	Description	Labor Time
2888088*	Reprogram ECM and TCM for U0401 and U1611 MIL and Check Engine Lamp	0.9 hr

*This is a unique Labor Operation for bulletin use only.

Important: To avoid warranty transaction rejections, carefully read and follow the instructions below:

Labor Operation	Description	Labor Time
<p>Labour Time [Top] _____</p> <p>Labour Operation Code: _____</p> <p>Additional labour op code information: _____</p> <p style="text-align: right;">SPS Warranty Claim Code: <input type="text"/></p> <p style="text-align: right;">6125814</p> <ul style="list-style-type: none">• The Warranty Claim Code must be accurately entered in the "Warranty Claim Code" field of the transaction.• When more than one Warranty Claim Code is generated for a programming event, it is required to document all Warranty Claim Codes in the "Correction" field on the job card. Dealers must also enter one of the codes in the "Warranty Claim Code" field of the transaction, otherwise the transaction will reject. It is best practice to enter the FINAL code provided by SPS2. <p>Important: Record the ECM Warranty Claim Code to submit and add the TCM Warranty Claim Code in the Correction comments section of the repair order.</p>		

Warranty Claim Code Information Retrieval



6125774

If the Warranty Claim Code was not recorded on the Job Card, the code can be retrieved in the SPS2 system as follows:

1. Open TLC on the computer used to program the vehicle.
2. Select and start SPS2.
3. Select Settings (1).
4. Select the Warranty Claim Code tab (2).

The VIN, Warranty Claim Code and Date/Time will be listed on a roster of recent programming events. If the code is retrievable, dealers should resubmit the transaction making sure to include the code in the SPS Warranty Claim Code field.

Version	8
Modified	<p>Released January 31, 2024</p> <p>Revised February 07, 2024 – Updated the Condition section.</p> <p>Revised May 30, 2024 – Revised Correction section and removed the Service Procedure and Warranty Information.</p> <p>Revised June 28, 2024 – Added Service Bulletin reference in Correction section and added Warranty Information.</p> <p>Revised October 02, 2024 – Revised Correction section to remove TAC Case information.</p> <p>Revised October 14, 2024 – Added the 2025 Model Year, updated the Correction section, and removed the asterisk line under the Warranty Information section.</p> <p>Revised November 14, 2024 – Revised Condition and Correction sections, added Programming Service Procedure, and unique labor operation and second Important statement under Warranty Information.</p> <p>Revised November 20, 2024 – Corrected warranty statement and Labor Operation under Warranty Information section.</p>

GM bulletins are intended for use by professional technicians, NOT a "do-it-yourselfer". They are written to inform these technicians of conditions that may occur on some vehicles, or to provide information that could assist in the proper service of a vehicle. Properly trained technicians have the equipment, tools, safety instructions, and know-how to do a job properly and safely. If a condition is described, **DO NOT** assume that the bulletin applies to your vehicle, or that your vehicle will have that condition. See your GM dealer for information on whether your vehicle may benefit from the information.



WE SUPPORT VOLUNTARY
TECHNICIAN
CERTIFICATION