


Title:	ASL 360 Programming			
Number:	SB_651	Release Date:	11/21/23	
Revision Number:	1	Revision Date:	11/15/2024	
Chassis Type:	ALL			
Component Description:	ASL 360 ECU Programming			
Tools:	Pierce P/N 3034864 Software and Dongle			

Subject:

This bulletin is to support the dealer network when replacing a ASL 360 ECU that requires programming on the truck.

Purpose:

When ASL 360 ECU's require replacement or recalibrating, the calibration process needs to be done on the truck. It requires special tooling and software to complete. This bulletin will share the process for calibrating the system and where to get the proper tooling.

Procedure:

NOTE:

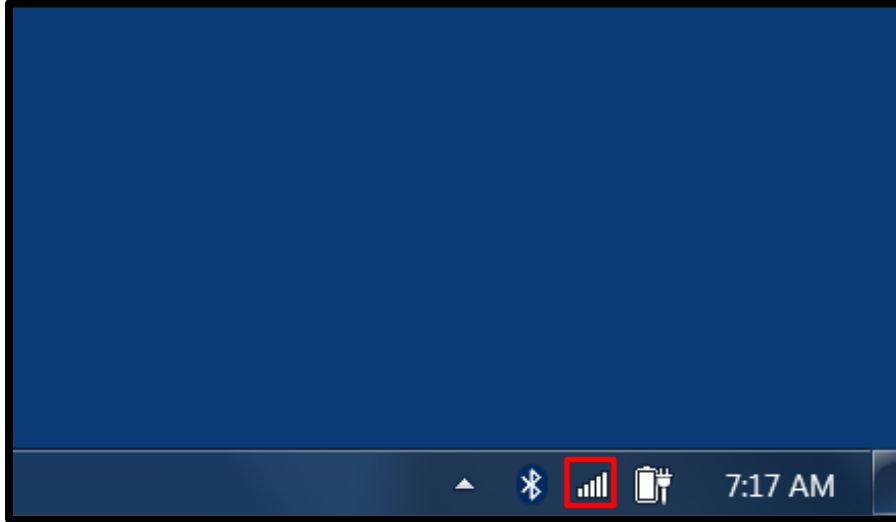
- The cost of tooling and software is not covered under warranty.
- Dealer will need to place an order for Pierce P/N 3034864 (dongle) for programming the ASL 360 ECU.
- The dongle will not show any files loaded onto it.
- A tech ticket must be submitted to Pierce Aftermarket Customer Support requesting the ASL Configurator tools and truck files.



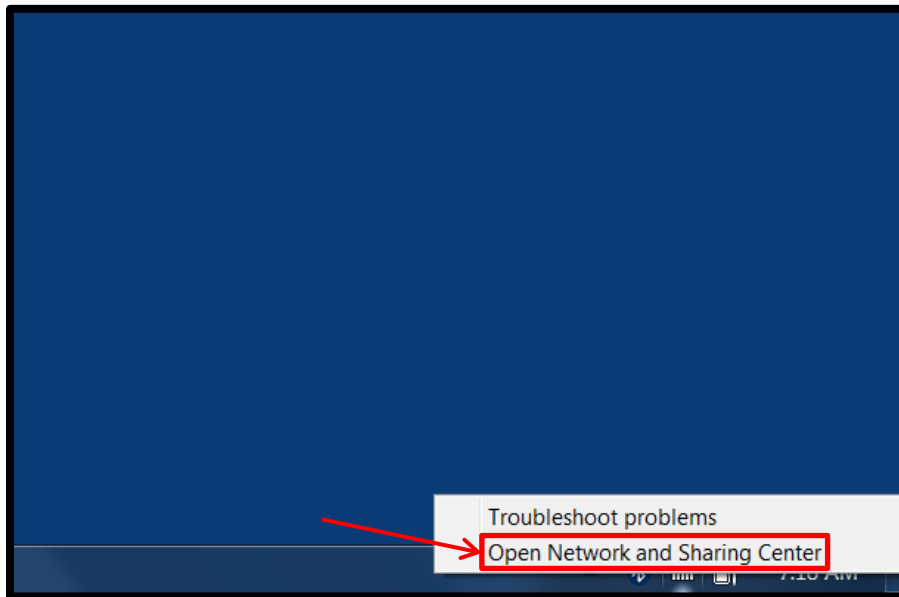
SERVICE BULLETIN #651.1

NOTE:

- Program and file locations shown are for reference only. You should use the locations created on your laptop.
- Make sure the dongle is connected to the USB port of your laptop before opening the software and starting the programming directions below. If it is not, the software will not unlock the programming features in the software.

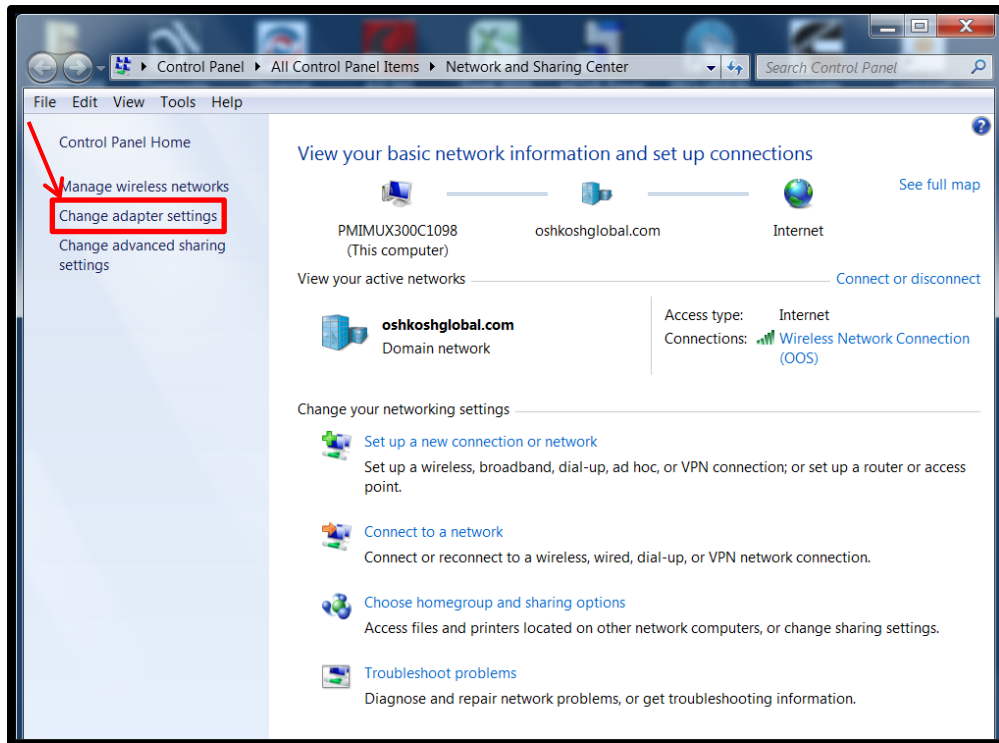


1. Right click the Wi-Fi icon in the lower right corner of the laptop screen.

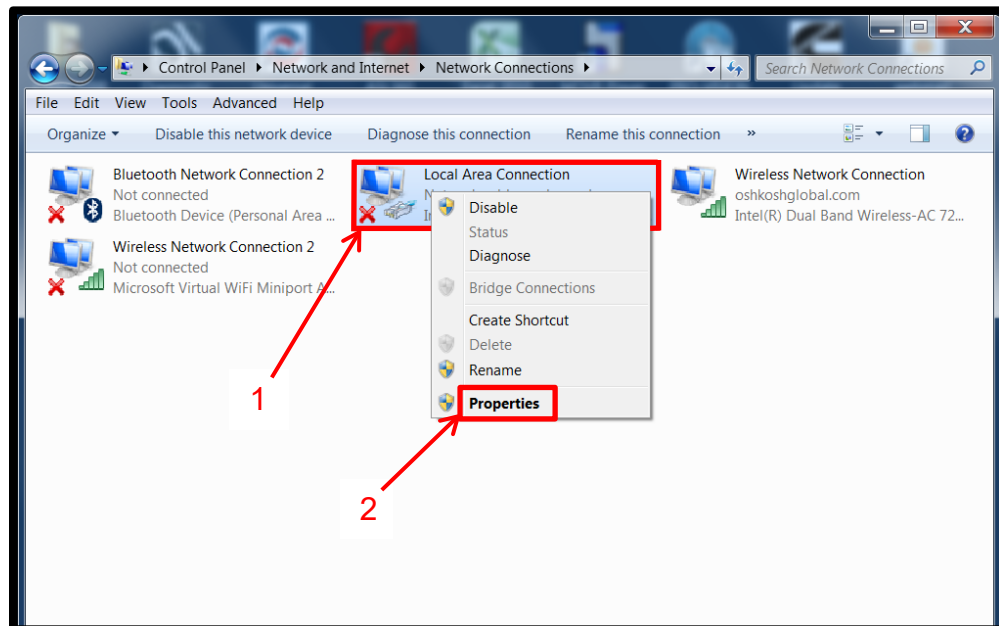


2. Select "Open Network and Sharing Center".

SERVICE BULLETIN #651.1

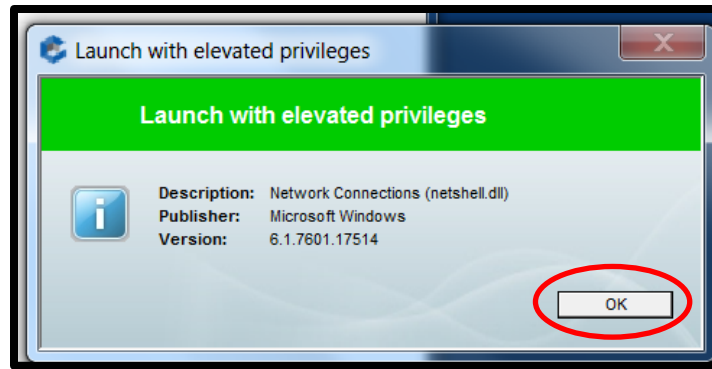


3. Select "Change adapter settings" from the left column.

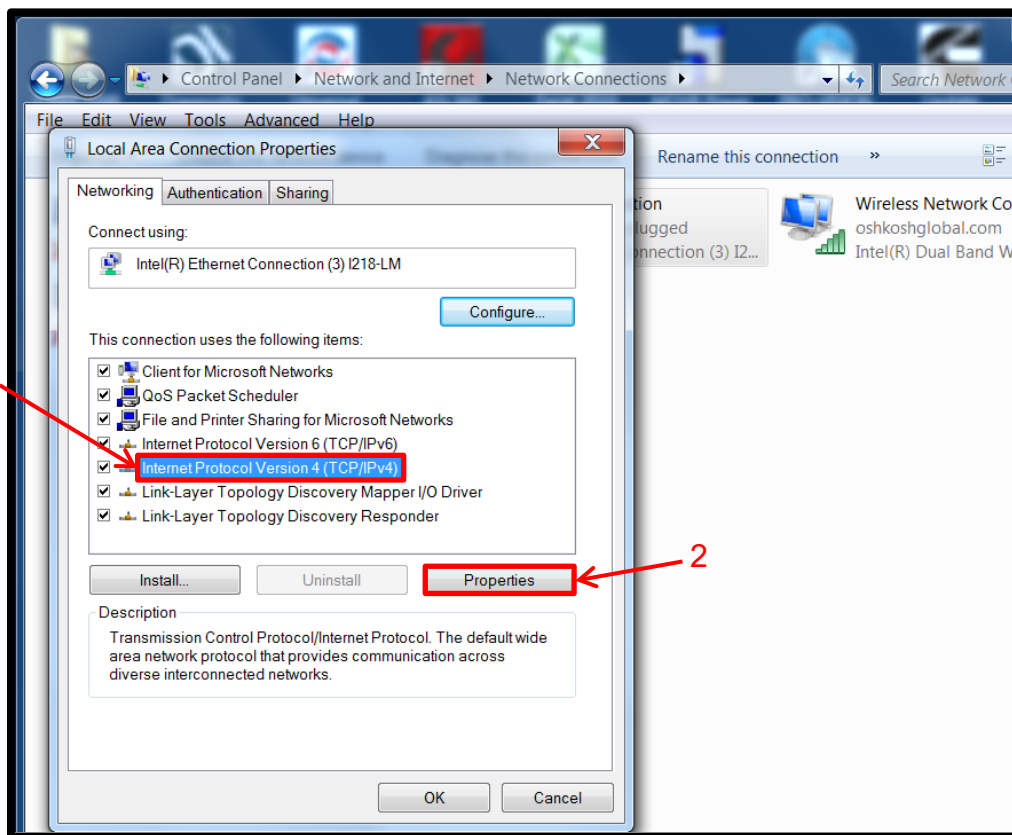


- 4. Right click on "Local Area Connection".
- 5. Select "Properties" from the drop-down box.

SERVICE BULLETIN #651.1



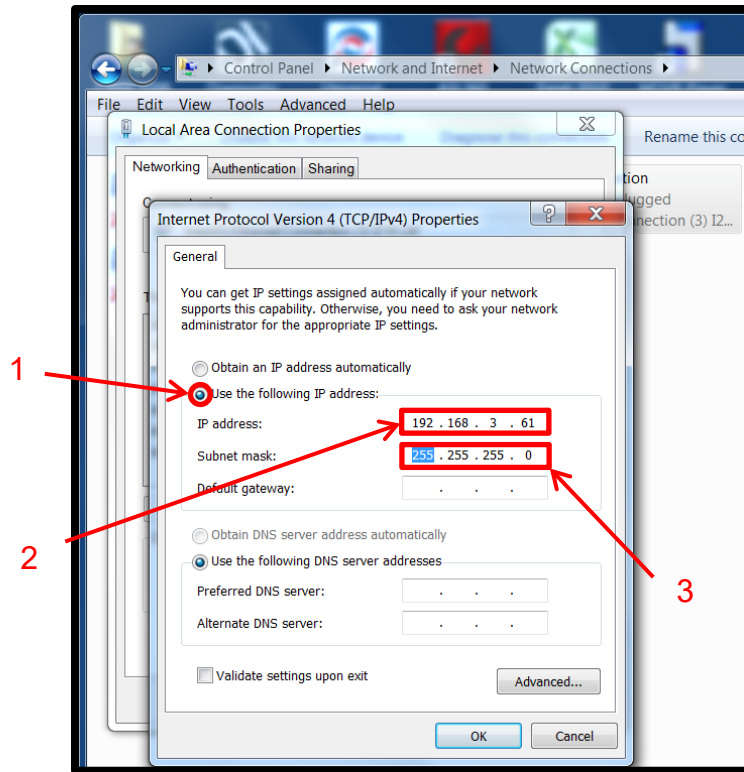
6. Select "OK" to Launch with elevated privileges.



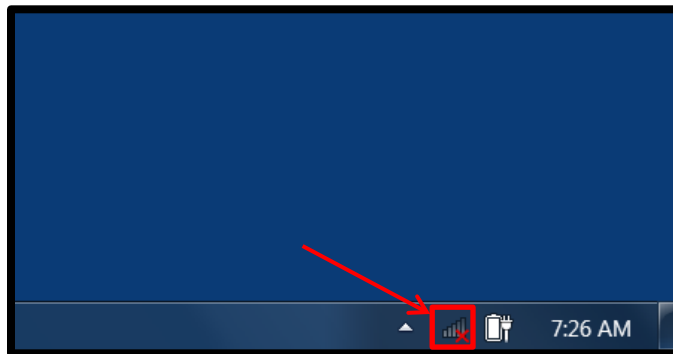
7. Select "Internet Protocol Version 4 (TCP/IPv4)".

8. Select the "Properties" button.

SERVICE BULLETIN #651.1

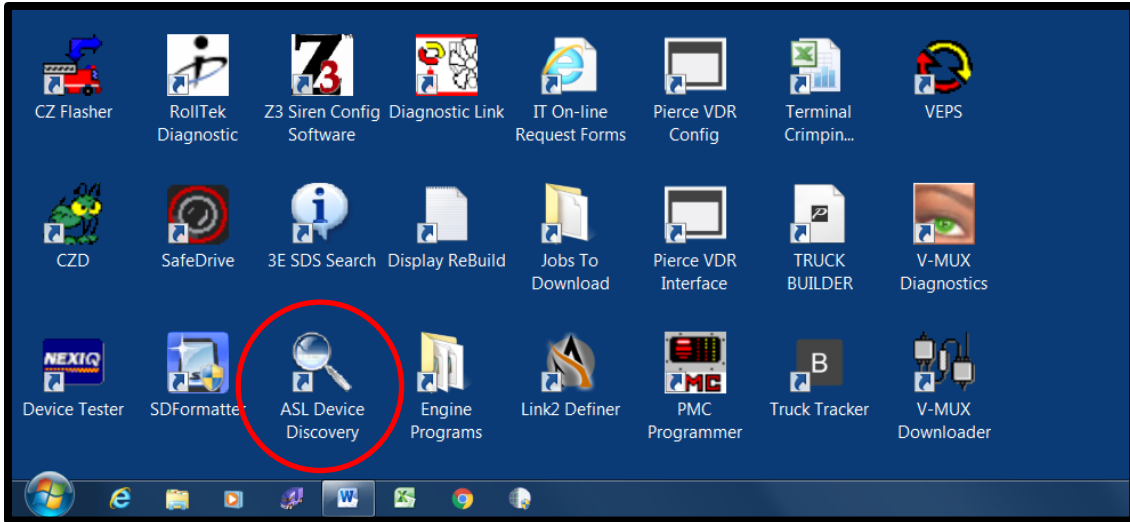


- 9. Select "Use the following IP address".
- 10. Populate the IP address with 192.168.3.61.
- 11. Selecting the "Subnet mask" will auto populate it.



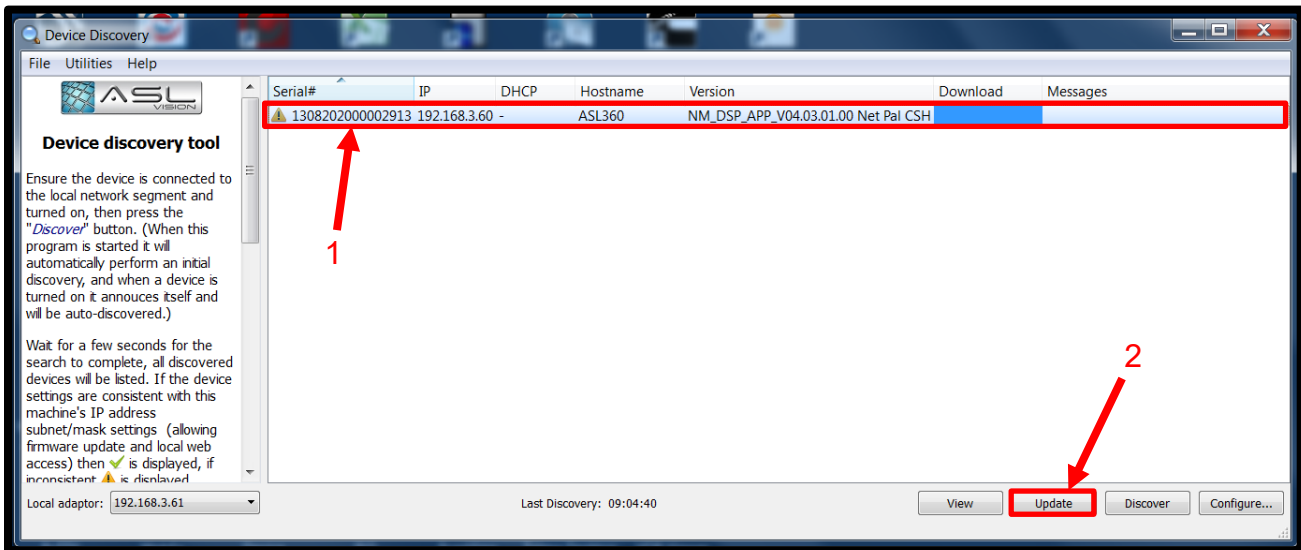
- 12. Shut off laptop Wi-Fi to allow connection to ASL360 camera module.

SERVICE BULLETIN #651.1



NOTE: Steps 13 -20 are typically no longer required. Skip to step 21. In the event there are issues you may have to perform these steps.

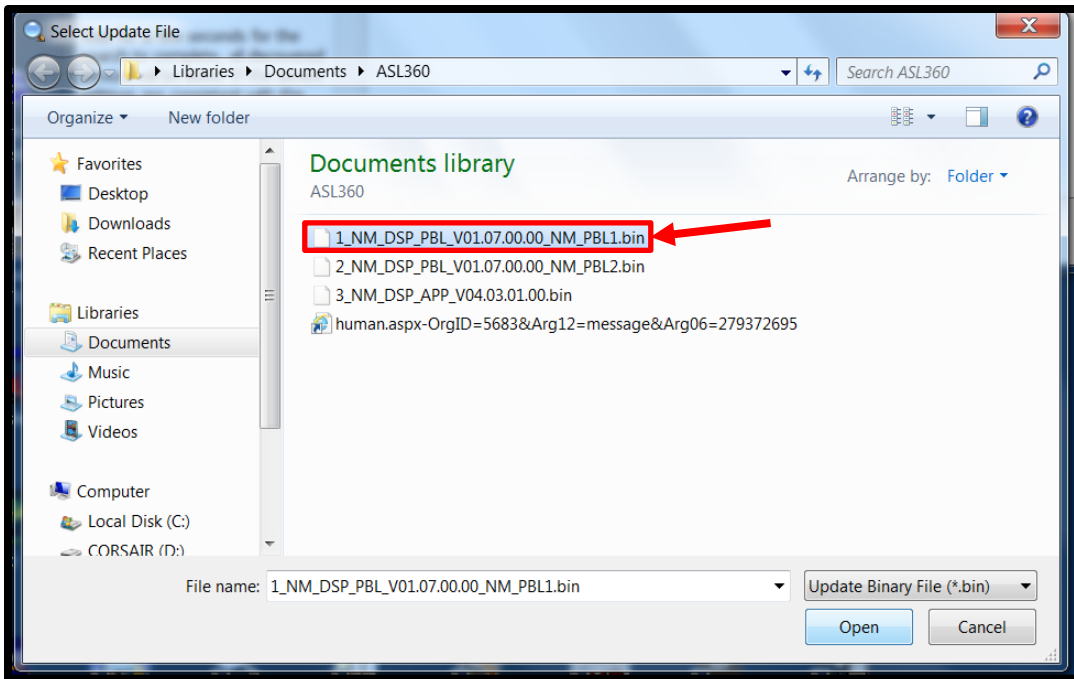
13. Open “ASL Device Discovery” software.



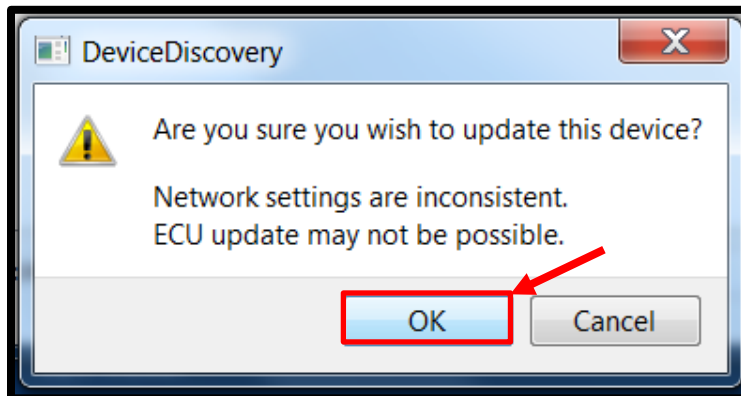
14. If connected properly to ASL 360 module, it will be visible in box.

15. Select “Update” button.

SERVICE BULLETIN #651.1

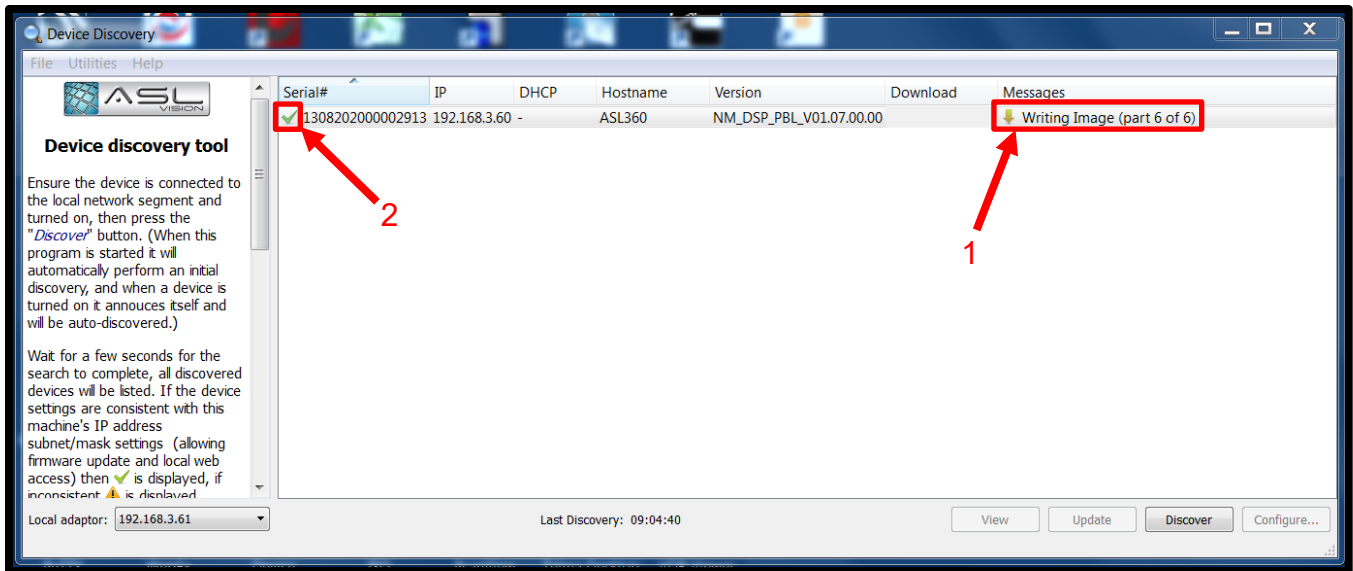


16. Select files, one at a time, starting with #1 and load to the ASL 360 module.

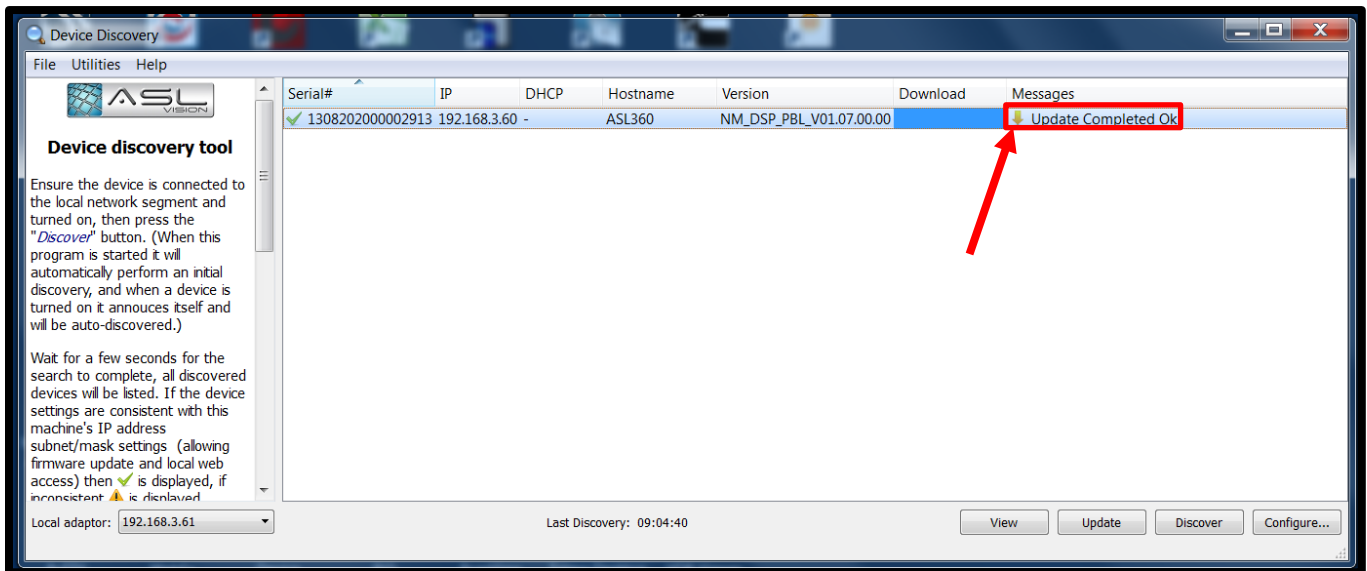


17. Select "Ok".

SERVICE BULLETIN #651.1

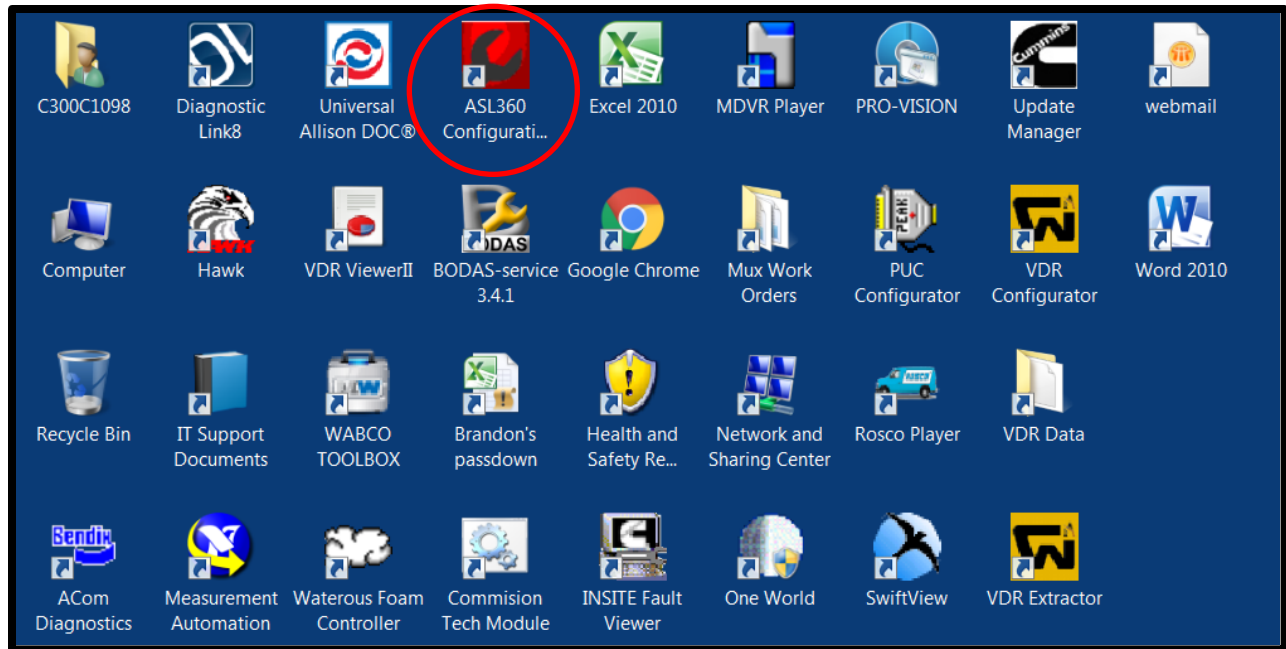


- 18. As file loads, “Writing to image” will advance as each file is loaded.
- 19. When all three files are loaded properly, a green check mark will be present.



- 20. Check that the “Messages” column reads “Updated Completed Ok” to ensure update is complete.

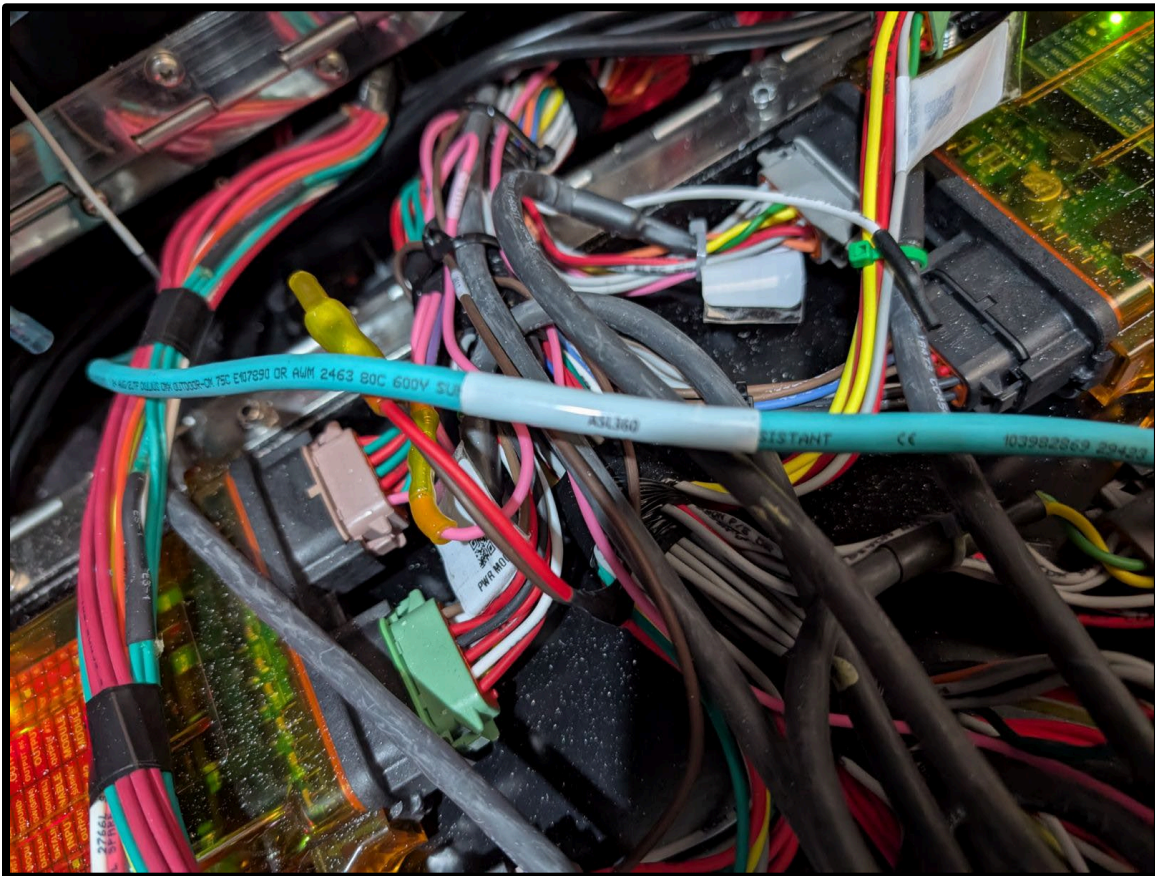
SERVICE BULLETIN #651.1



21. Connect your computer to the ASL ECU:

- Most ECU's already have an ethernet cable attached. It can be found behind the passenger side kick panel. In the event that there is no cable, the ECU will have to be located. Typically, they are mounted behind the drivers dash above the pedals. They can also be located under the center console or passenger side kick panel. In the rare instance there is no cable connected to the ECU P/N 3038632 (Cable,Ethernet,ASL360) will have to be ordered.

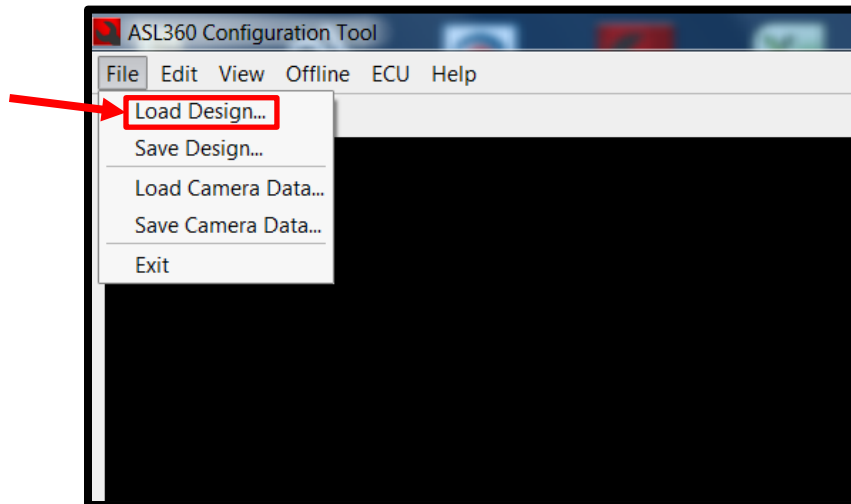
SERVICE BULLETIN #651.1



SERVICE BULLETIN #651.1

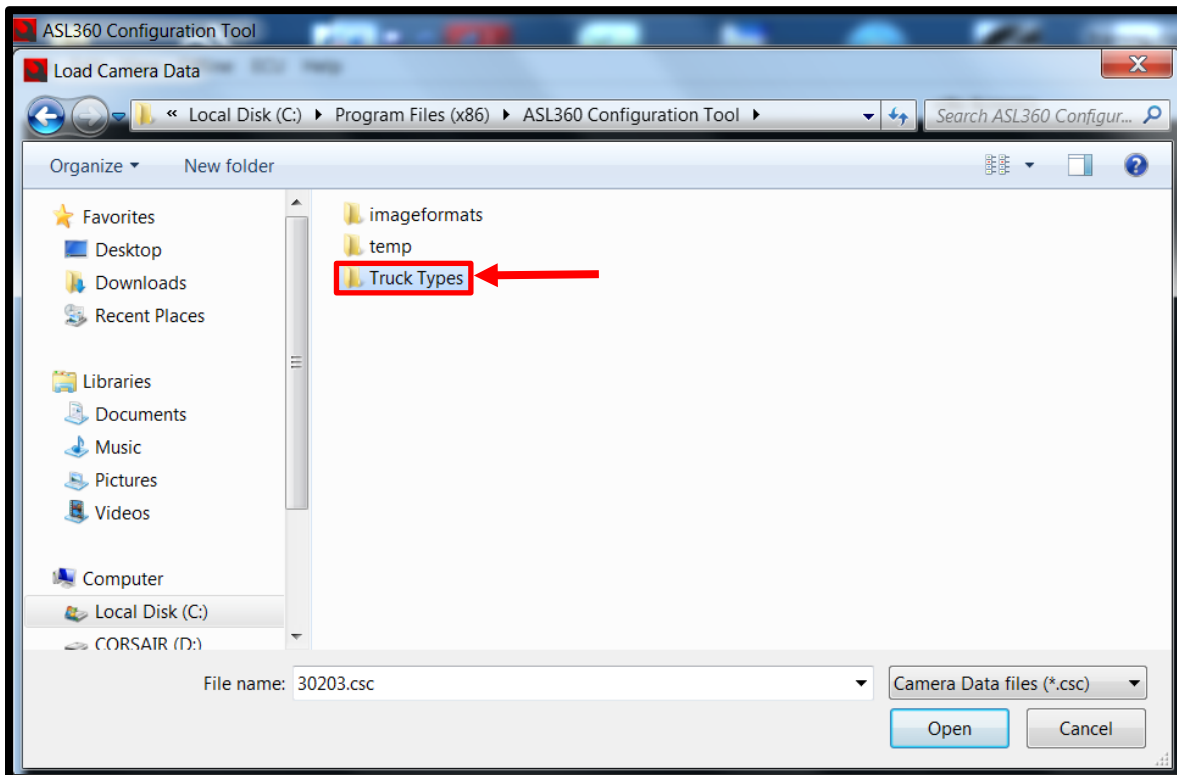
NOTE: If your computer is not equipped with an ethernet port then you will need an ethernet adapter dependant on what type of connections the computer has.

22. Open “ASL 360 Configuration” software.



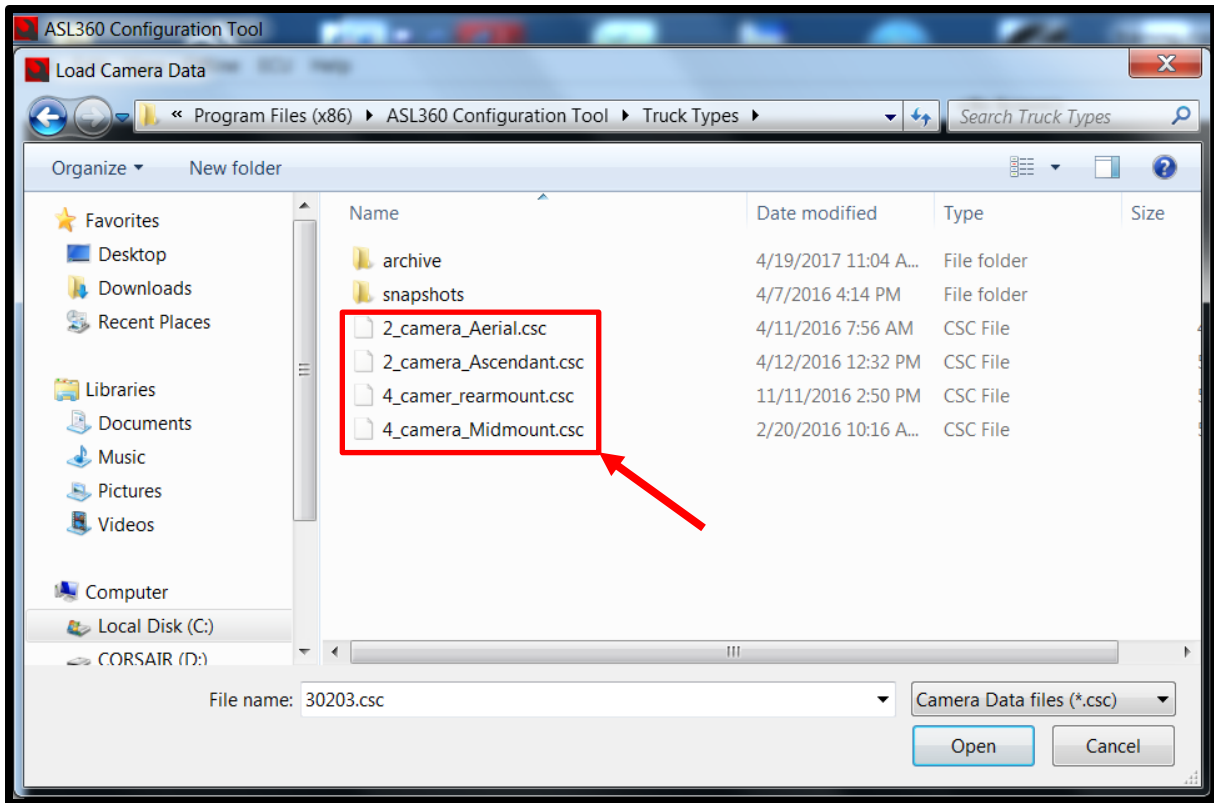
23. If everything is set up correctly with laptop and license key dongle, ASL360 module will show up in “green” and indicate “online” in the laptop lower right corner. Should be able to get this far (not installed in truck) if doing bench test.

24. When installed in truck and connected, click “File” and in the drop down menu, select “Load Design”.

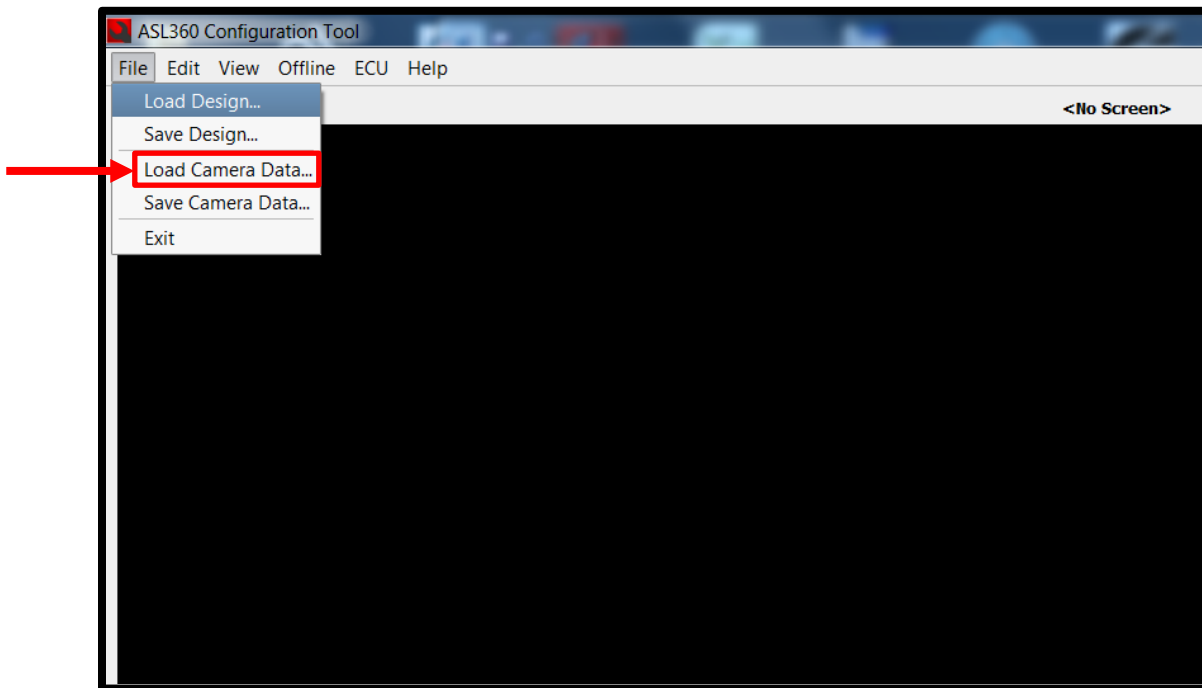


25. Open “Truck Types”.

SERVICE BULLETIN #651.1

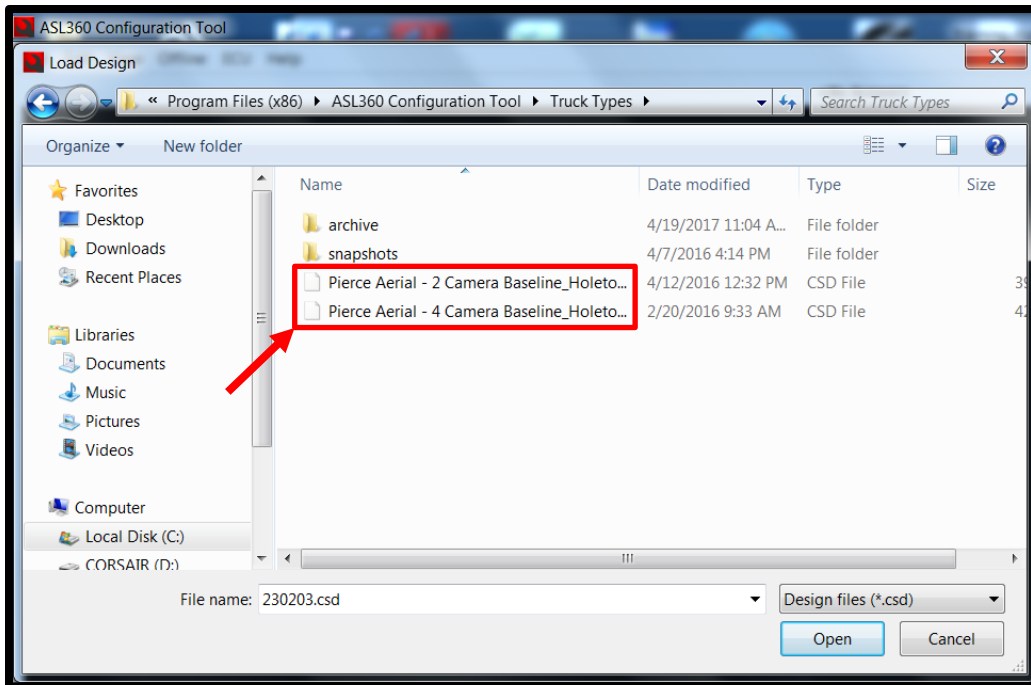


26. Select camera configuration based on chassis.

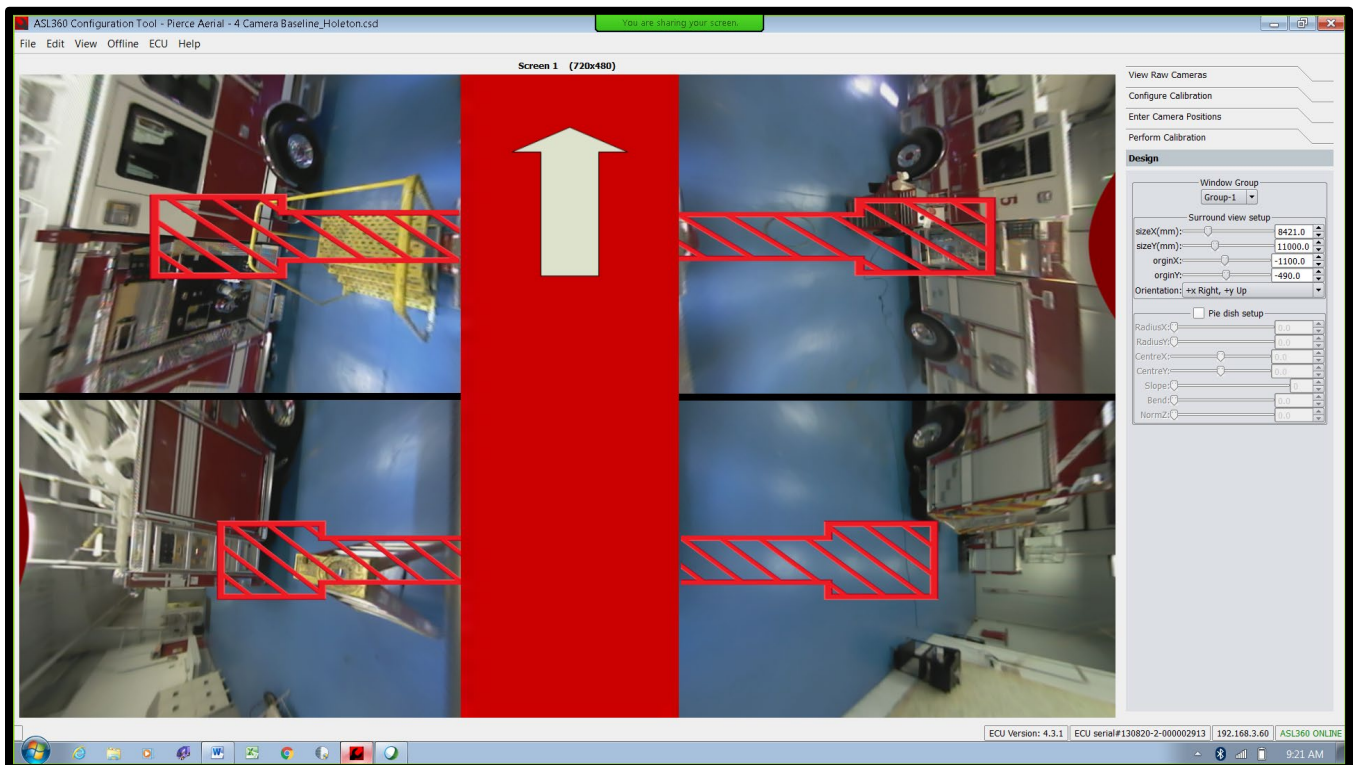


27. Select "Load Camera Data".

SERVICE BULLETIN #651.1



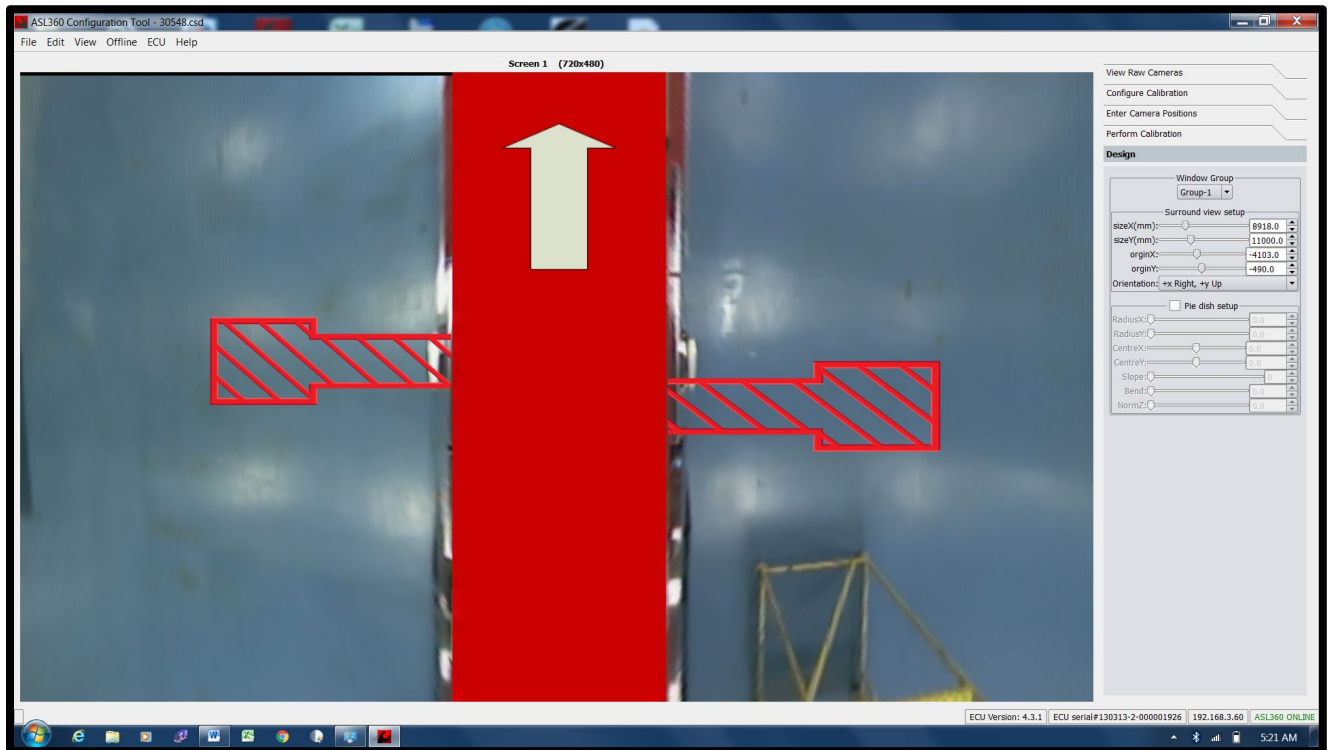
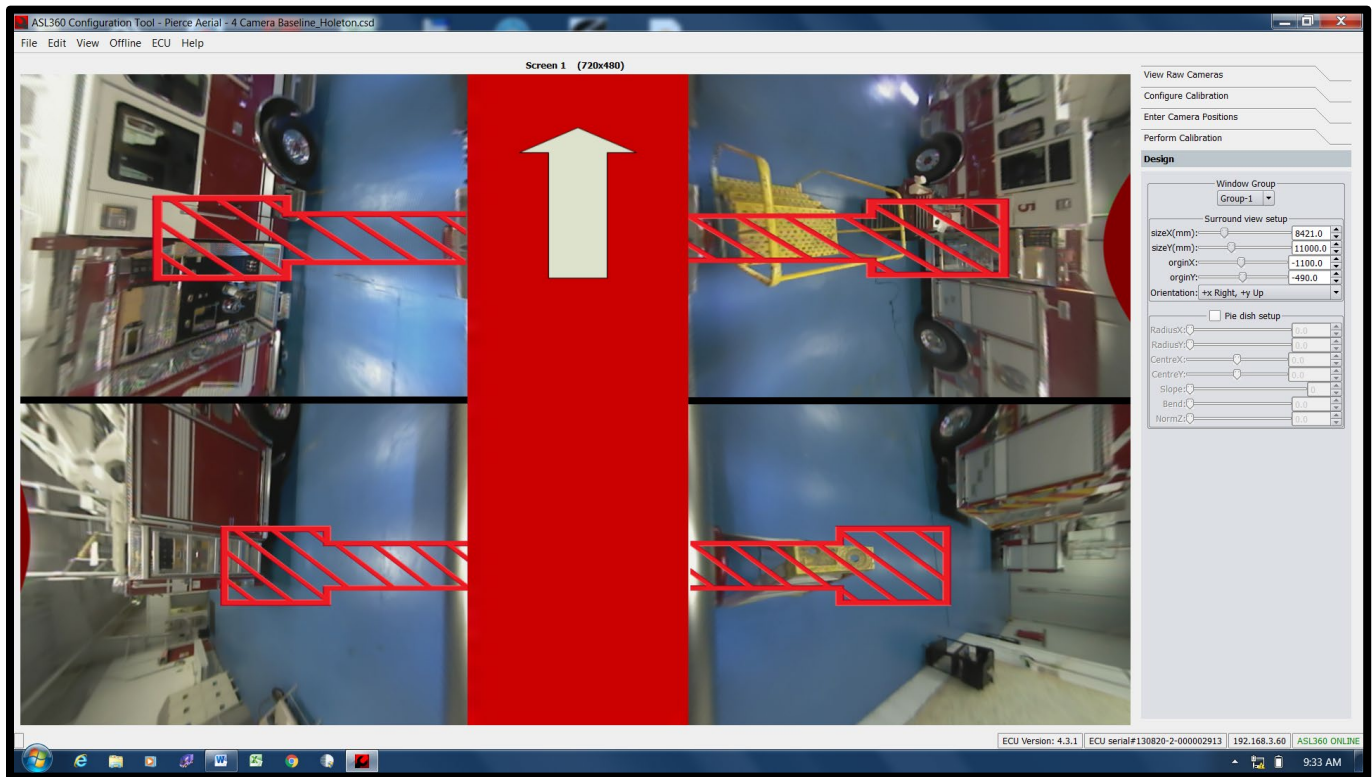
28. In "Truck Types" folder, choose appropriate camera layout.



29. Laptop screen should look like this when properly connected and data loaded to module.

SERVICE BULLETIN #651.1

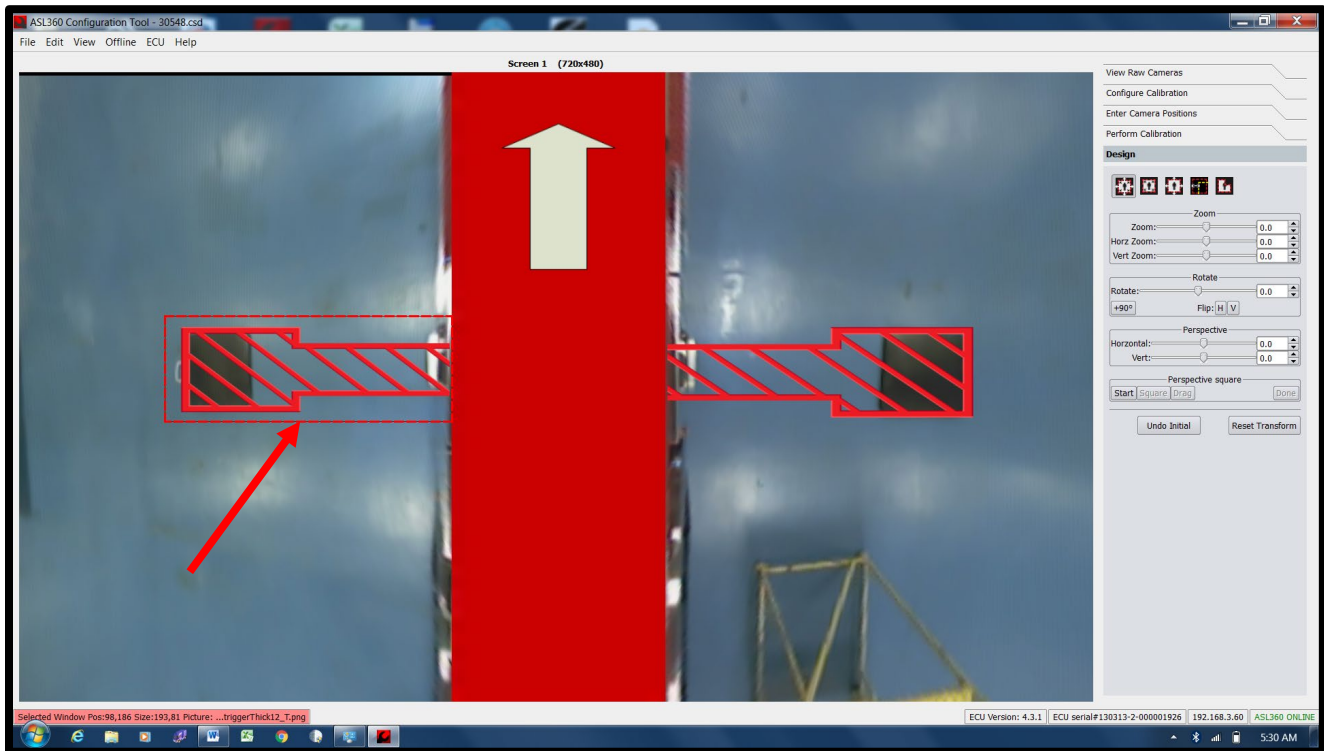
NOTE: Whenever loading the CSD file you may see an error saying the ASL configuration tool cannot locate the image files. Load the CSD file anyway and change the file location by selecting edit-window list, click the picture file you desire to modify-then select its new file location from your PC. (Often times when Pierce sends the files, they appear with the file path from our drive) Do this for any other image file that's missing and you should have all images where they belong, adjust as needed.



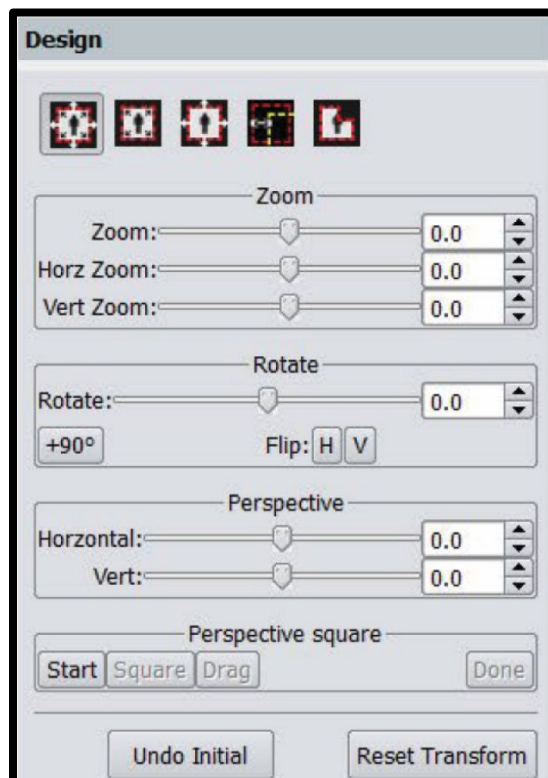
NOTE: When cameras are properly directed, the wheel well skirts are slightly visible in the camera view.

SERVICE BULLETIN #651.1

30. Four-camera system vs two-camera system.

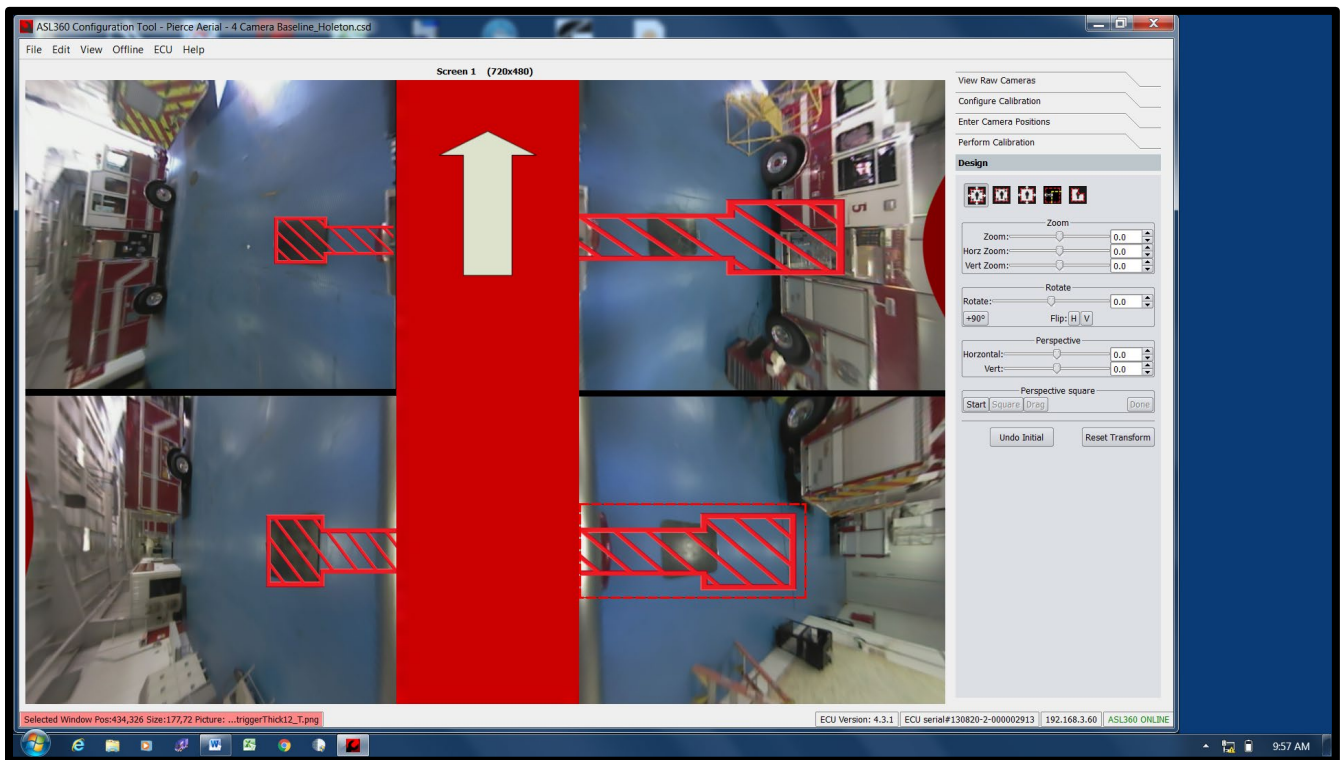


31. To adjust the red stabilizer boxes, double-click anywhere in the red outline and the dotted lines will appear. Left click with mouse pointer on the dotted line to drag/manipulate the size/location of the red stabilizer box (red outlines are properly aligned with stabilizer pads).

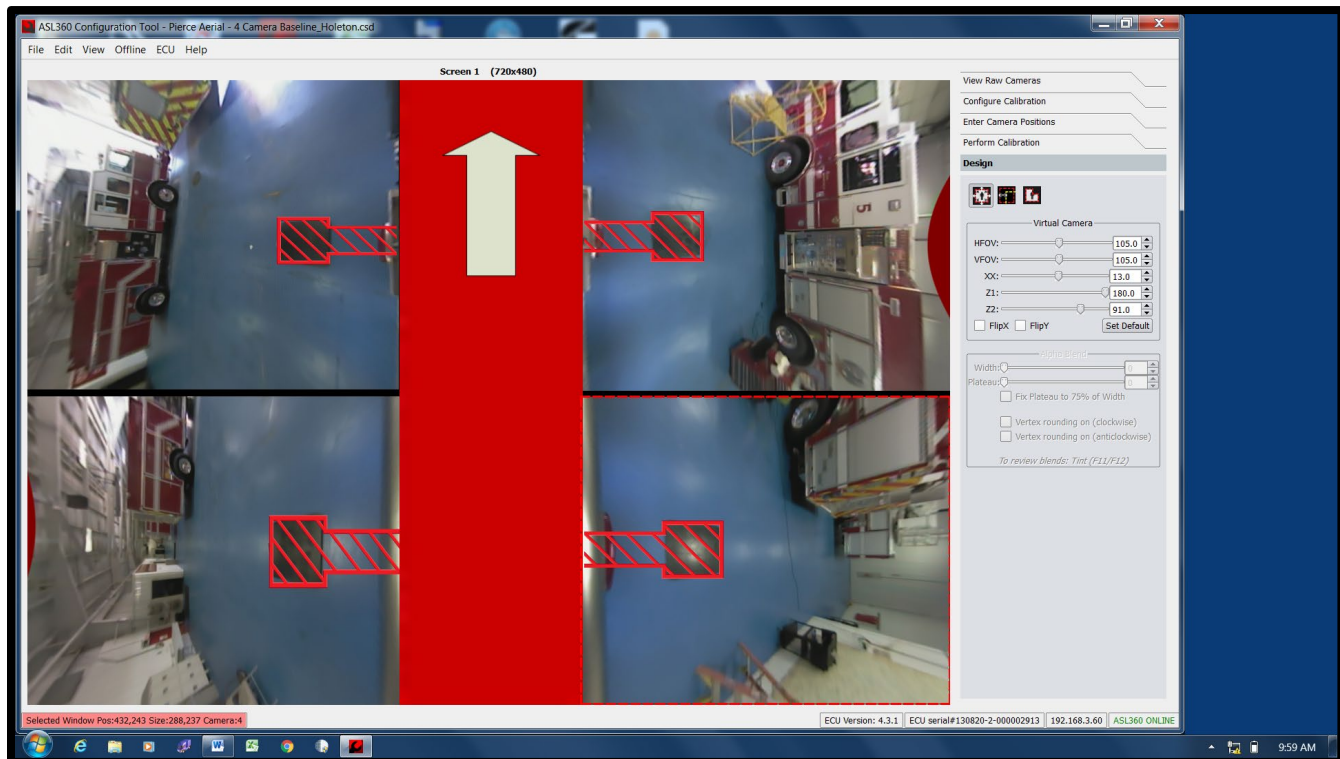


SERVICE BULLETIN #651.1

32. Use the following controls in the “Design” tab in order to make fine-tuned adjustments for the outrigger outline alignment.

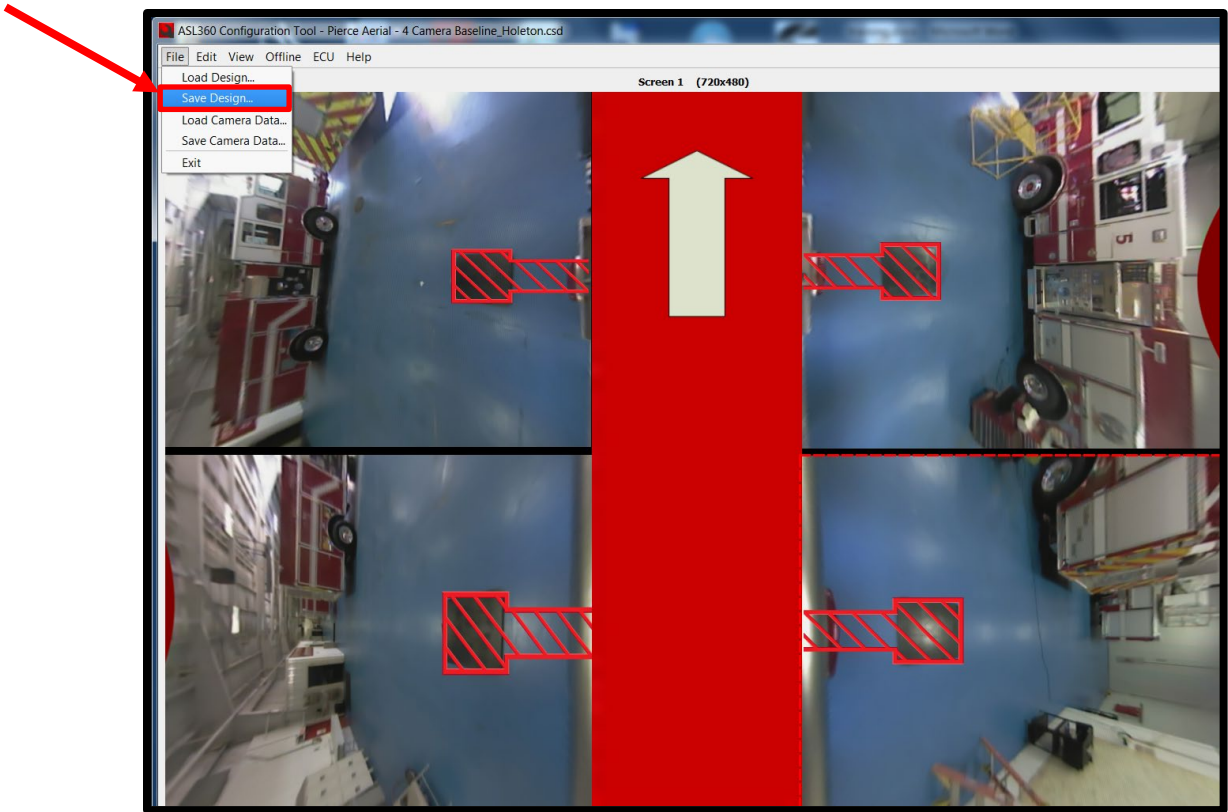


33. Left side properly aligned; right side is not.

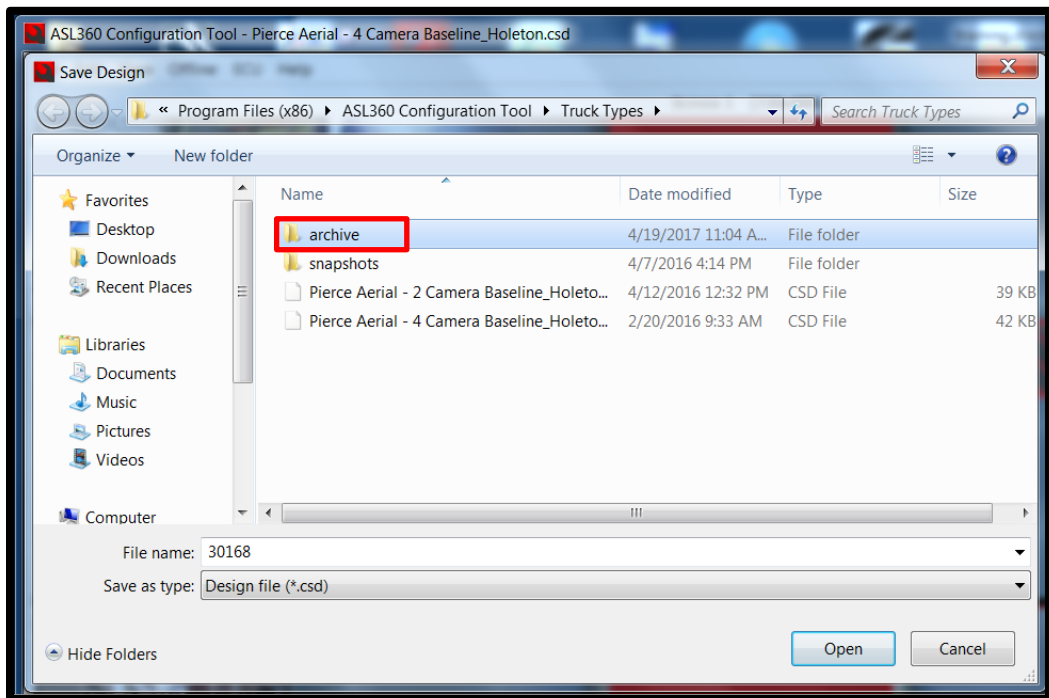


34. All four stabilizer outlines are properly aligned.

SERVICE BULLETIN #651.1



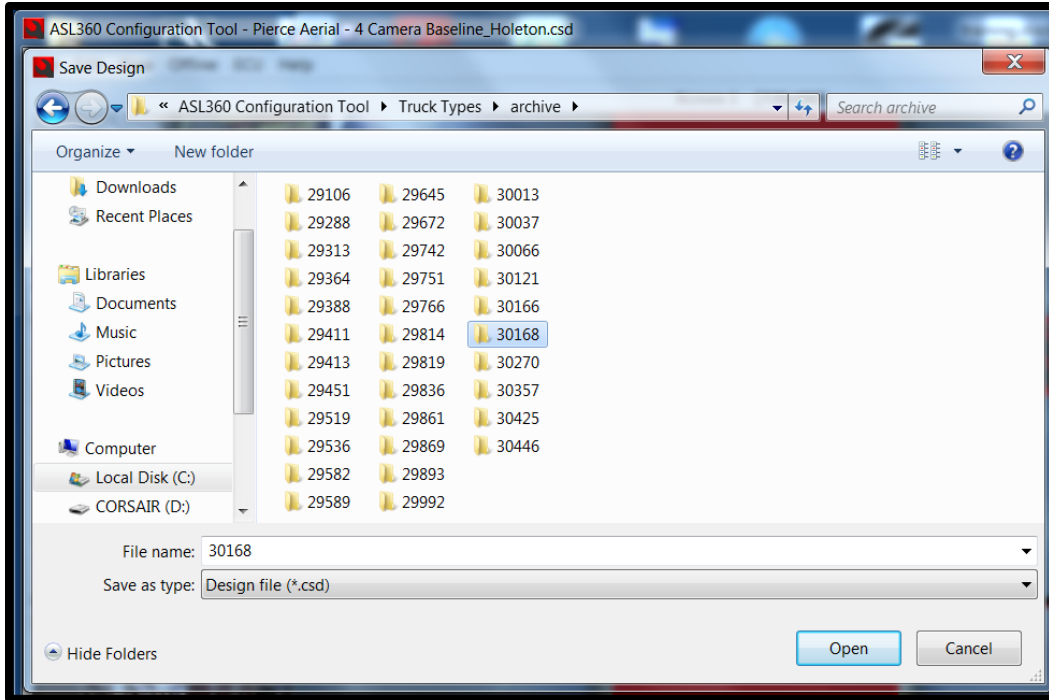
35. Once alignment is complete, select “File” drop down menu and select “Save Design”.



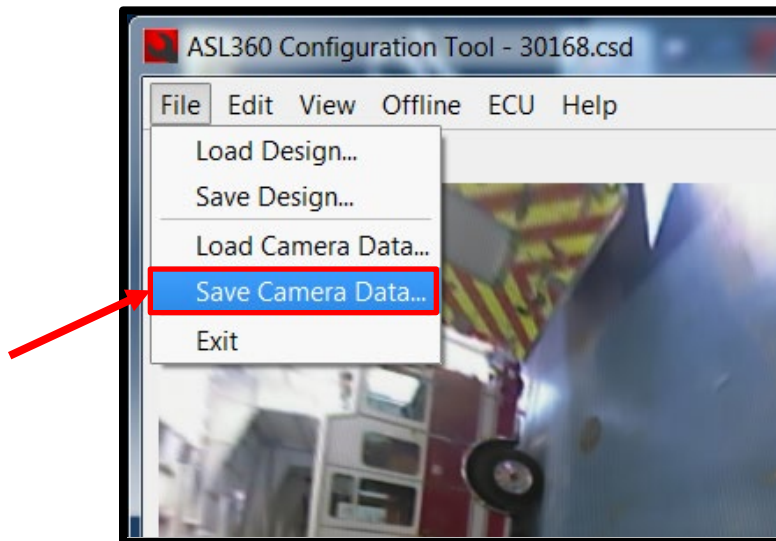
NOTE: Do not alter archive folder.

36. Program will save to its “archive” folder.

SERVICE BULLETIN #651.1

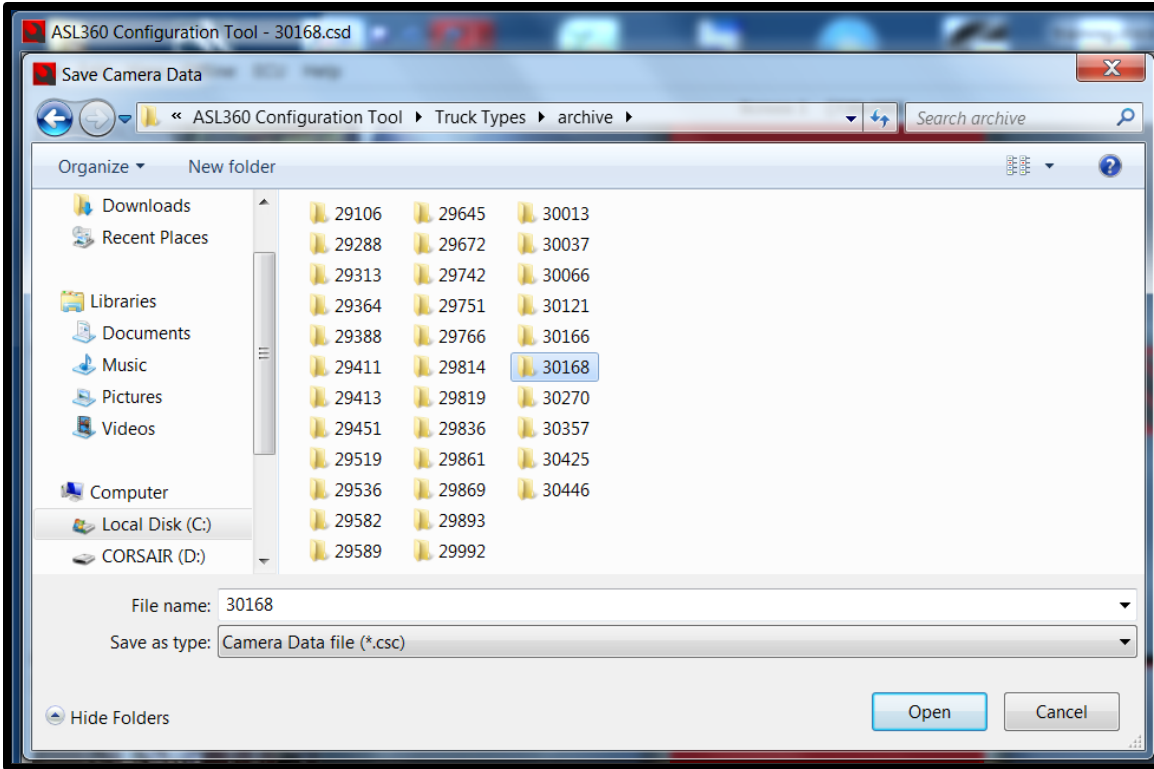


35. We create a folder for each truck by number.

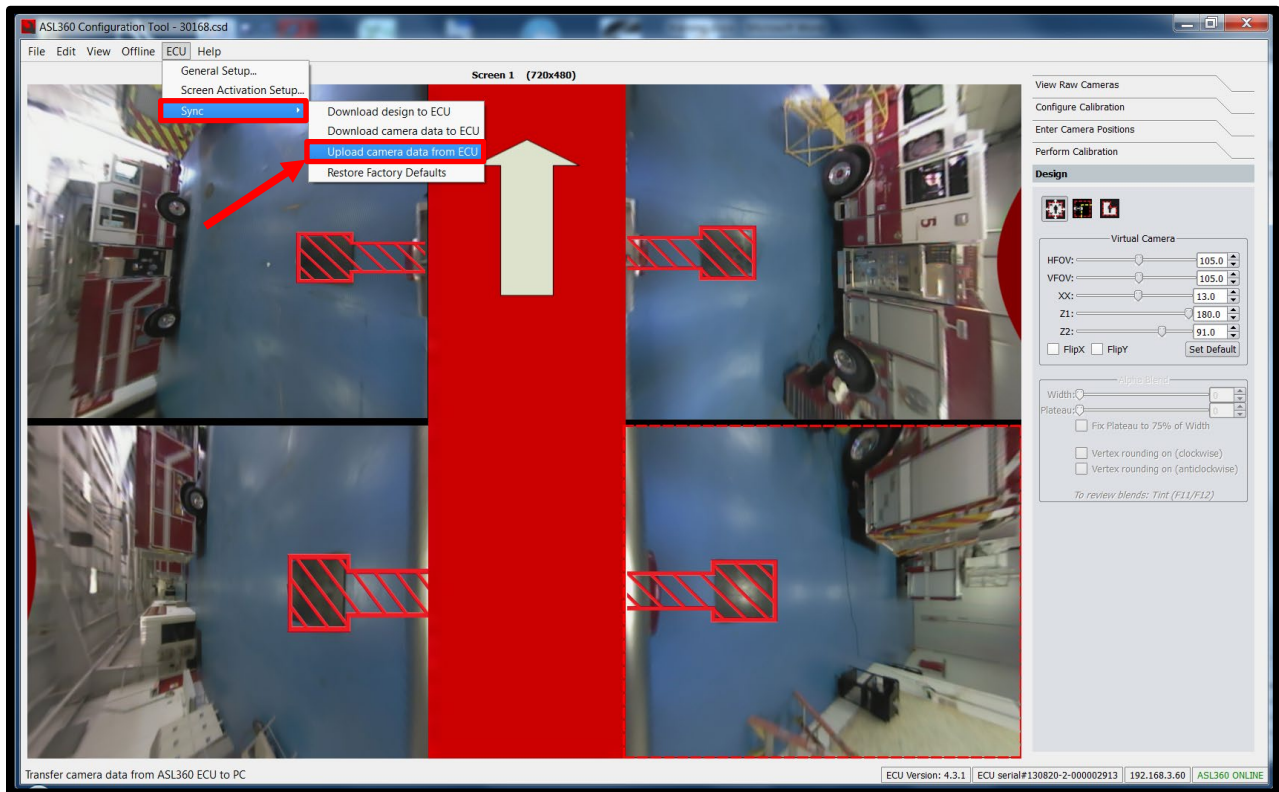


37. "File" drop down menu, select "Save Camera Data".

SERVICE BULLETIN #651.1

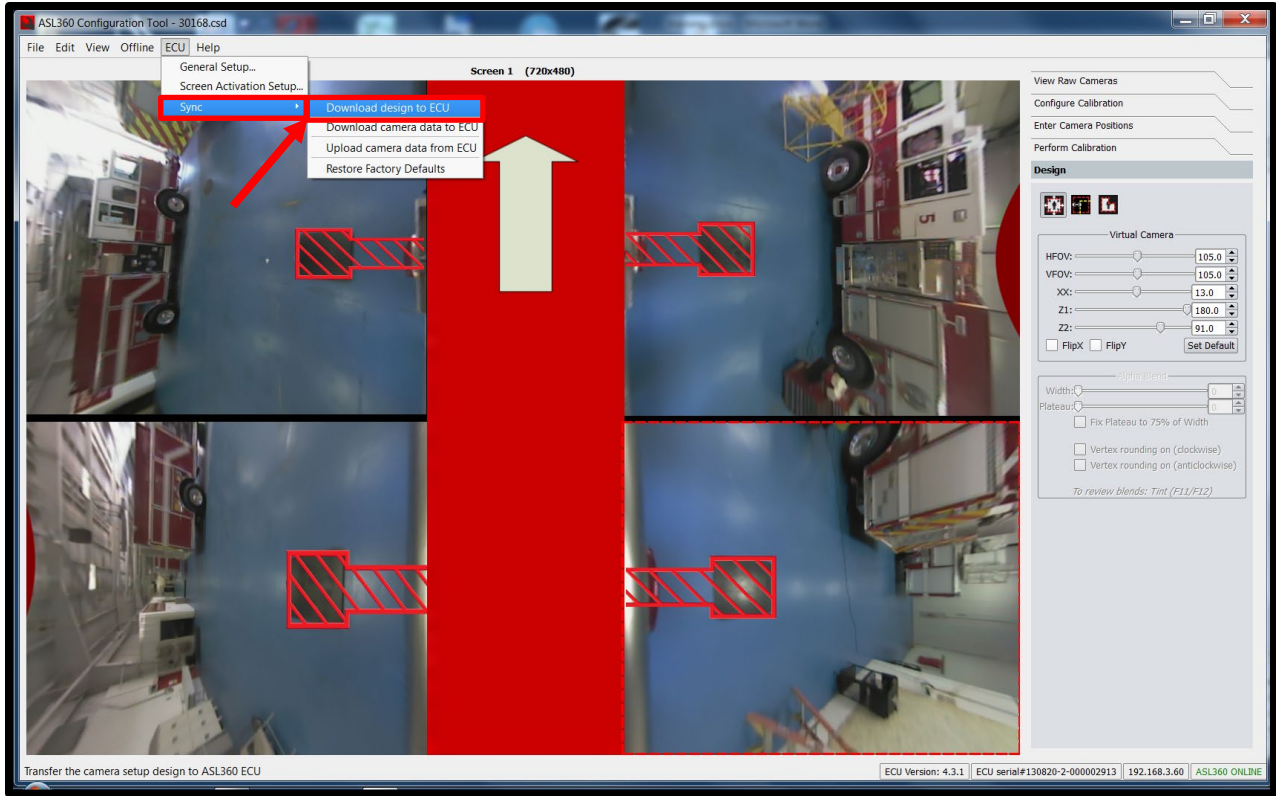


38. Save to same location as “Design”.

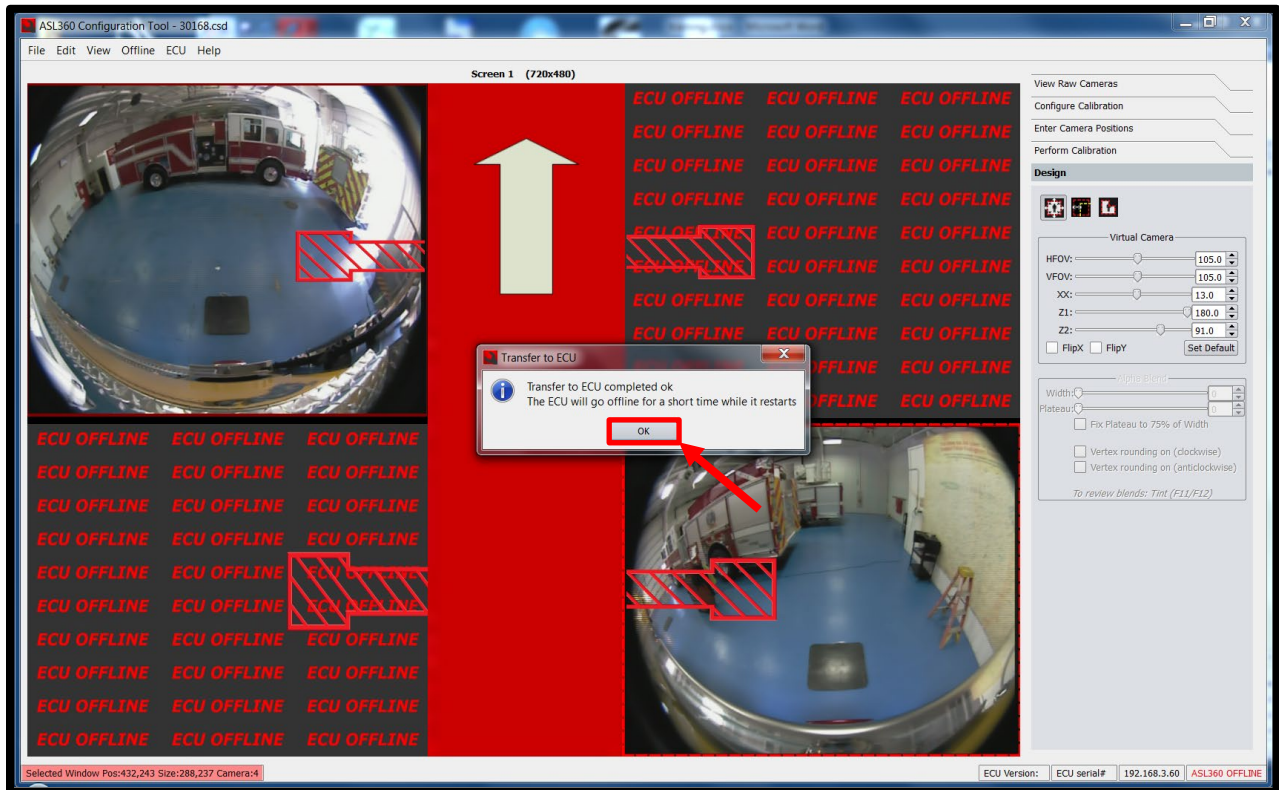


39. Select “ECU” drop down menu, “Sync”,

SERVICE BULLETIN #651.1

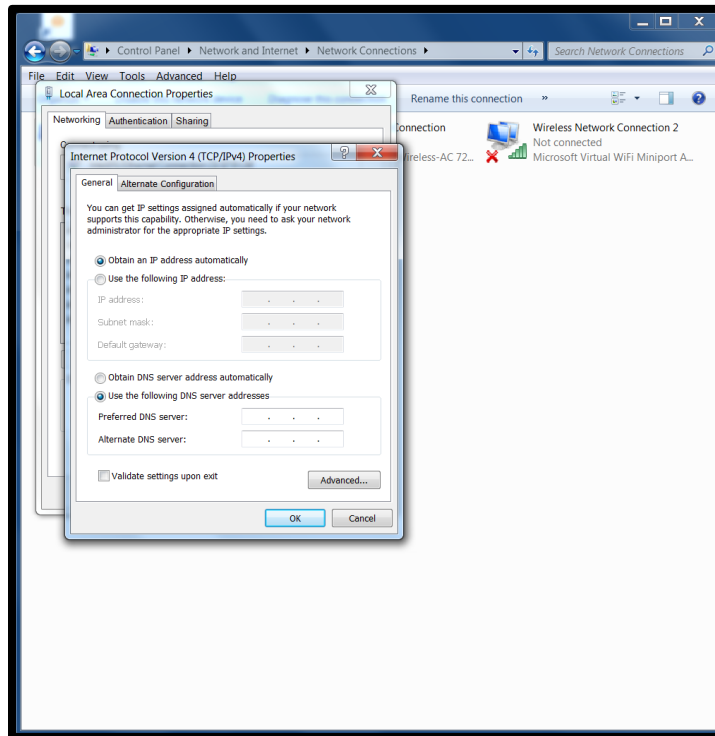
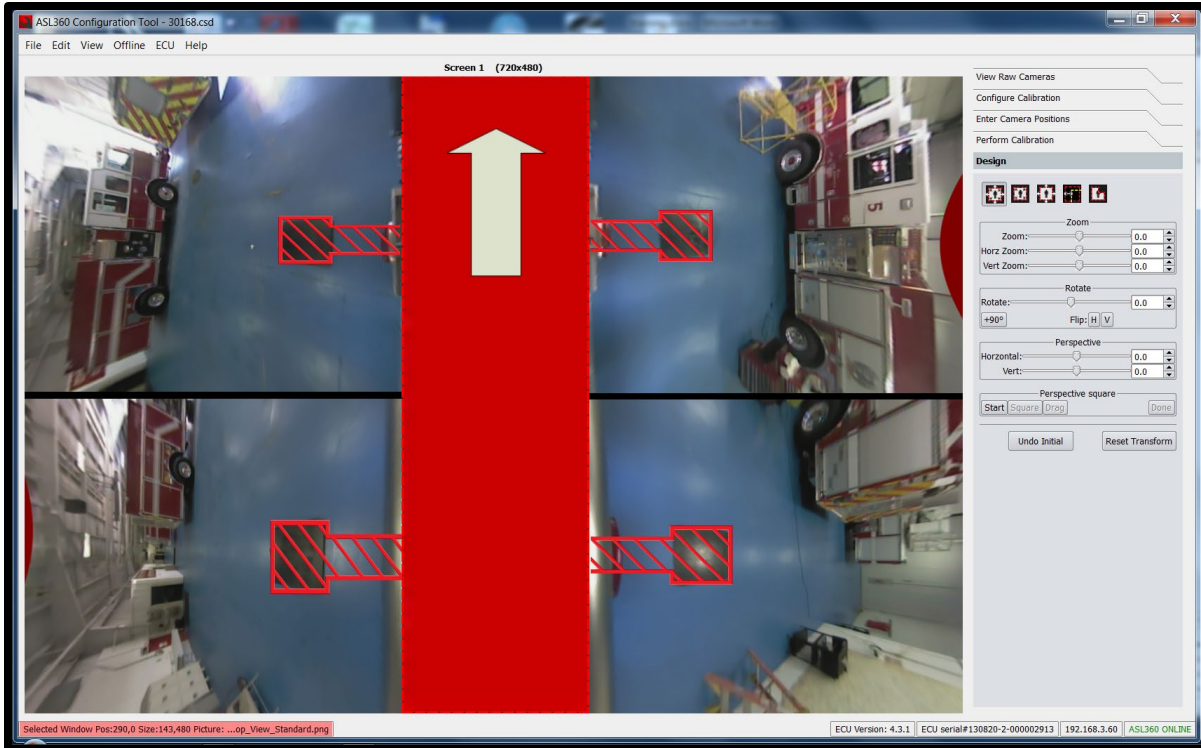


40. Select "Download design to ECU". The program will automatically take file from where you saved it.



41. Select "Ok". The ASL 360 module will reset and briefly go "Offline" (it will reconnect automatically).

SERVICE BULLETIN #651.1



42. Reset Ethernet, remove dongle, turn on Wi-Fi, store stabilizer pads, and reinstall camera covers if they were adjusted.

Revision Log		
Rev. #	Changes	Date
1	Update notes regarding dongle/software. Added step for ordering ethernet cable if one is not already present	11/15/2024

