

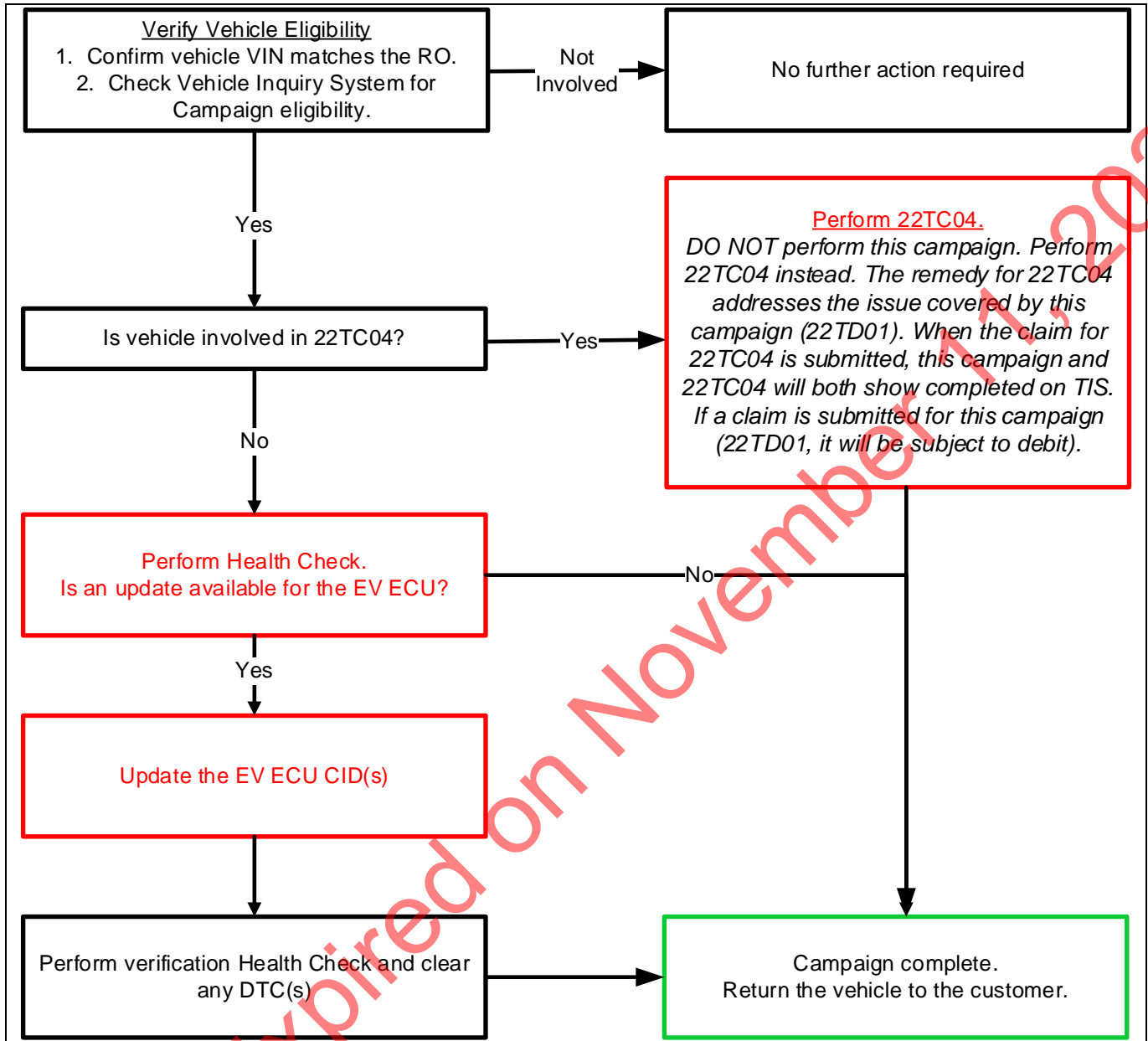
TECHNICAL INSTRUCTIONS
LIMITED SERVICE CAMPAIGN 22TD01
SOFTWARE UPDATE FOR EV CONTROL COMPUTER
CERTAIN 2021 MODEL YEAR MIRAI VEHICLES

The repair quality of covered vehicles is extremely important to Toyota. All dealership technicians performing this repair are required to successfully complete the most current version of the E-Learning course "Safety Recall and Service Campaign Essentials". To ensure that all vehicles have the repair performed correctly; technicians performing this recall repair are required to currently have completed all of the following courses:

- T623 - Toyota Electrical Circuit Diagnosis

It is the dealership's responsibility to select technicians with the above certification level or greater to perform this recall repair. Carefully review your resources, the technician skill level, and ability before assigning technicians to this repair. It is important to consider technician days off and vacation schedules to ensure there are properly trained technicians available to perform this repair at all times.

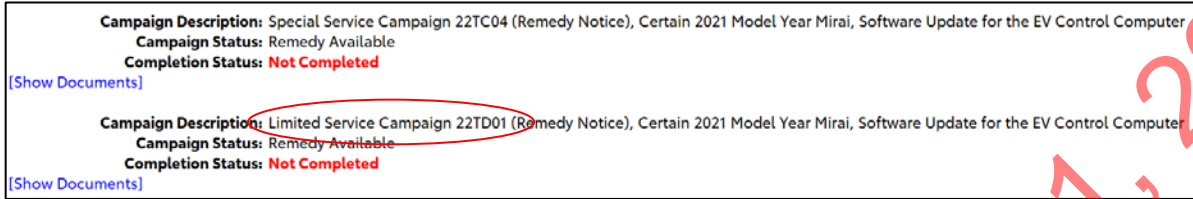
1. OPERATION FLOW CHART



22TD01 Expired on November 1, 2024

2. IDENTIFICATION OF AFFECTED VEHICLES

- A. Check the TIS Vehicle Inquiry System to confirm that each VIN is eligible for this Limited Service Campaign, and that it has not already been completed prior to dealer shipment or by another dealer.
- B. Check if vehicle is also involved in 22TC04 as shown in the screen shot below



- C. Is vehicle involved in 22TC04?

NO: Proceed to perform this campaign.

YES: Perform 22TC04. *DO NOT perform this campaign. Perform 22TC04 instead. The remedy for 22TC04 addresses the issue covered by this campaign (22TD01). When the claim for 22TC04 is submitted, this campaign and 22TC04 will both show completed on TIS. If a claim is submitted for this campaign (22TD01) in this scenario, it will be subject to debit.*

3. PREPARATION

A. PARTS

Part Number	Part Description	Quantity
00451-00001-LBL*	Authorized Modification Label	1

*Labels can be ordered in packs of 25 from the MDC through the Dealer Daily Website

B. TOOLS, SUPPLIES & EQUIPMENT

- o Standard Hand Tools
- o Techstream ADVi / Techstream 2.0 / Techstream Lite
- o DCA-8000P Battery Diagnostic Tool
- o T-SB-0107-20

4. BACKGROUND

Due to improper programming in the EV Control Computer, under certain conditions, the vehicle may erroneously illuminate a warning message in the instrument panel display.

5. PRECAUTIONS

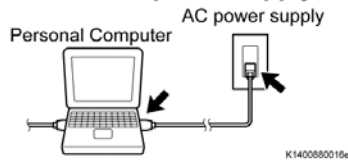
STOP

CRITICAL INFORMATION - READ THOROUGHLY

STOP

An ECU could be damaged if an error occurs in the communication while reprogramming the ECU. Confirm all work is performed as described in these instructions.

Be sure to connect the personal computer to an external AC power supply.



Turn off the screen saver and power saving mode.



DO NOT block the ventilation opening.



A. STABILIZE THE POWER TO THE PERSONAL COMPUTER

- i. Be sure to connect the personal computer to an external AC power supply.

NOTE:

The ECU could be damaged if the battery voltage of the personal computer drops while reprogramming.

- ii. Turn off the screen saver and power saving mode of the personal computer so that the power to the hard disk is kept supplied.

NOTE:

If the screen saver or power saving mode launches while reprogramming, the communication may be disconnected, resulting in the damage of the ECU.

- iii. **DO NOT** block the ventilation opening for the cooling fan of the personal computer.

NOTE:

If the ventilation opening for the cooling fan is blocked with a sheet cover or the like, the personal computer may be heated excessively, causing the operation of the personal computer to stop.

Due to the stop of the operation, the communication for reprogramming signals could be stopped, resulting in the damage of the ECU.

6. CALIBRATION ID VERIFICATION



A. CHECK FOR DTC'S

- i. Using a Techstream, perform a Health Check to check for any Diagnostic Trouble Codes.

NOTE:

This Campaign covers only the software update to the EV control ECU, as detailed in these instructions. It does not cover the diagnosis or replacement of any other systems on the vehicle.

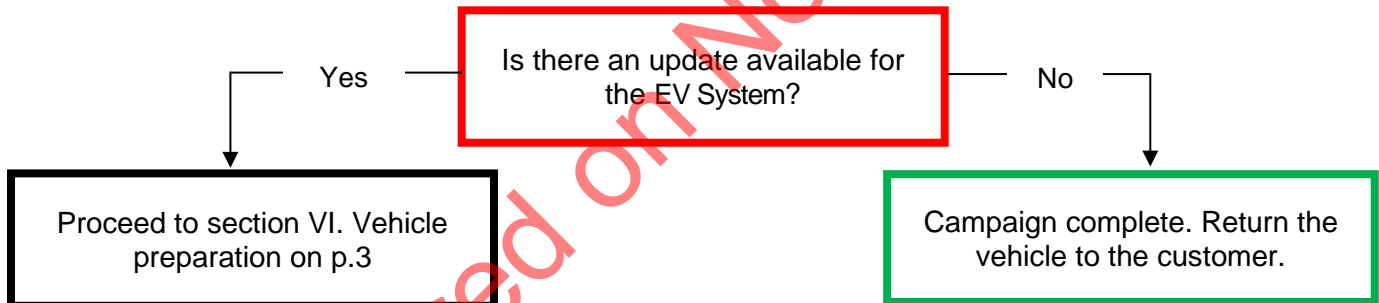
B. CHECK CURRENT CALIBRATION

- i. Locate the Update column for the EV in the Stored Data tab for this vehicle.
- ii. Determine the status of an available update; indicated by a YES or NO.

- To update Health Check, click the Refresh button on the bottom of the Health Check screen.

System	DTC Related Information					RoB	Calibration	Update
	DTC	Curr Conf	Pend	Hist	Test Failed			
EV						●	899836216100 899856202000	Yes Yes
EV Battery						●	899846203000 899846203000	No No
FCDC						●	8998F6201000 8998G1101100	No No
Lane Control						●	8998F6202000	No
						●	8646F6201300	No

S89039aS



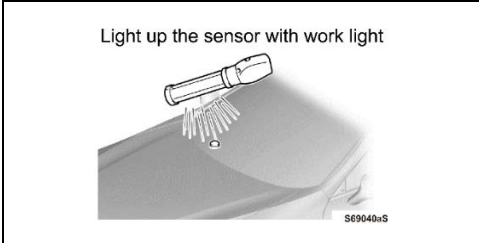
◀ CRITICAL MESSAGE ▶

It is critical that [T-SB-0107-20](#) in addition to the Technical Instructions for this LSC are followed. This TSB outlines all steps necessary to prevent reprogramming failure. Toyota will not provide reimbursement coverage for reprogramming failures if this TSB is not followed. If you have a reprogramming failure that requires EV control ECU replacement and the Technical Instructions and TSB were followed correctly, please create a case with the Technical Assistance Hotline documenting all information related to the failure. If sufficient reporting is received related to re-flash failure, there will be consideration for reimbursement.

7. VEHICLE PREPERATION

A. VEHICLE PREPERATION

- i. Confirm the following conditions:
 - Vehicle in the IG position (engine off).
 - Open the driver's door window.
 - Transaxle in P range.
 - Parking brake engaged.
 - Turn off all electrical accessories (i.e. air conditioning system, audio system, etc.).
 - Headlight switch in the DRL OFF position.(w/ DRL OFF position)
 - Windshield wiper switch in the OFF position.



- ii. When the vehicle has no "off position" in the light control switch:
Turn the IG ON.
 - Set the light control switch to the AUTO position and make sure that the exterior lights are turned on.
 - Light up the automatic light control sensor with work light to keep the exterior lights turned off.

B. CONNECT THE 12V BATTERY TO A POWER SUPPLY

- i. Connect the DCA-8000 or other type of a power supply (not a battery charger) to the 12V battery.
- ii. Tap the Reflash icon from the Main Menu screen of the DCA-8000.



A power supply *MUST* be used during reprogramming. ECU damage will occur if the battery voltage is not properly maintained during this re-flash procedure.

NOTE: A power supply must be connected directly to the 12V battery terminals and NOT the remote jump posts under the hood (if equipped).

C. VERIFY TECHSTREAM SETUP

- i. Verify that the Techstream meets the following conditions:
 - The latest version of software is loaded.
 - The Techstream battery is fully charged. If not, connect the Techstream to a 120V source.
 - The DLCIII cable is in good condition.



The Techstream's battery voltage must also be maintained during the re-flash procedure. If necessary, plug the Techstream into a 120v outlet during this procedure.

8. UPDATE CALIBRATION

A. CONFIRM THE CALIBRATION ID

- i. Confirm the current calibration ID in the EV.

System	DTC	Current Calibration ID	Pending	History	Test Results	RoB	Calibration	Update
EV		899836216100				●	899836216100	Yes
EV		899856202000				●	899856202000	Yes
EV Battery		899846203000				●	899846203000	No
FCDC		8989F6201000				●	8989F6201000	No
Lane Control		8989G1101100				●	8989G1101100	No
		8989F6202000				●	8989F6202000	No
		-				●	-	No
		8646F6201300				●	8646F6201300	No

The calibration IDs to re-flash in this campaign are as shown in the table below.

System		Calibration ID	
		Current Calibration ID	New Calibration ID
EV	Main	899836216100 899836216200 899836216300 899836216400	899836216500/ 899856202200
	Sub	899856202000 899856202100	

B. REFLASH THE EV CONTROL ECU

- i. Click yes on the health check results screen, or follow the links on the table above to begin the reflash process.

NOTE:

Reflash failure should be extremely rare and can be avoided by following all instructions and reprogramming best practices.

9. COMPLETE REPAIR

A. DISCONNECT THE DCA-8000



B. PERFORM VERIFICATION HEALTH CHECK

- Using a Techstream, perform a Health Check.
- Clear DTC's that may have set during the re-flash procedure.
- Re-run the Health Check to confirm that no DTC's reappear.



THIS VERIFICATION HEALTH CHECK IS NECESSARY to update the results and CID's to the National database.

C. CONFIRM CID UPDATE

- On the Stored Data tab, confirm the following for the EV:
The Update column lists "No"

- To update Health Check, click the Refresh button on the bottom of the Health Check screen.

System	DTC Related Information						Calibration	Update
	DTC	Curr Fail	Pend	Hist	Test Fail	RoB		
EV							899836216500 No	
							899856202200 No	
							030040204000 No	
							898846203000 No	
EV Battery							8989F6201000 No	
							8989G1101100 No	
FCDC							898BF6202000 No	
Lane Control							- No	
Front Passenger Camera							8648F6201300 No	

S89040aS

MUST say "NO"



Confirm the CID(s) have been updated successfully to the NEW CID's by someone other than the individual who performed the repair. Refer to p.4.

D. Using Techstream, clear ALL DTCs and confirm proper vehicle operation.

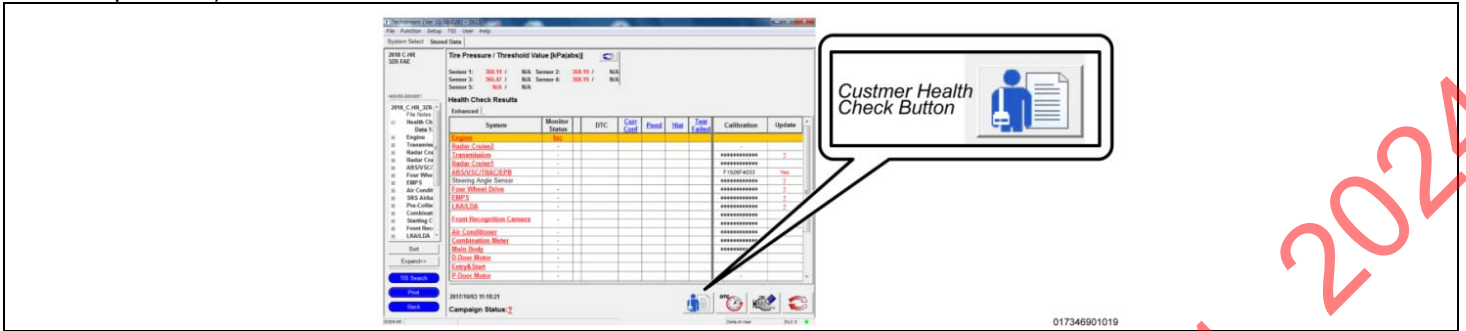
NOTE

If you cannot clear some DTCs, perform the following tasks:


- Turn the vehicle OFF.
- Wait at least 10 minutes.
- Ready ON the vehicle and attempt to clear DTCs again.

D. PRINT CUSTOMER HEALTH CHECK REPORT

i. From the Stored Data tab, select the Customer Health Check Report button (TIS will launch when button is pressed).



vi. Confirm Customer Health Check Report information is correct.



Diagnostic Report

Vehicle Information

Vehicle: xxxxxxxxxxxx VIN: xxxxxxxxxxxxxxxxxxxx Mileage: 13672
Repair Order: 12345

Health Check Summary

Checkpoints	Status	Comments
Powertrain	All systems OK	
Chassis	All systems OK	
Electrical	All systems OK	
Network Systems	All systems OK	
Service Campaigns	No Action Required	XXX Performed

Performed: XX/XX/XX, X:XX XX (PST)

Technician Signature

Quality Inspector Signature

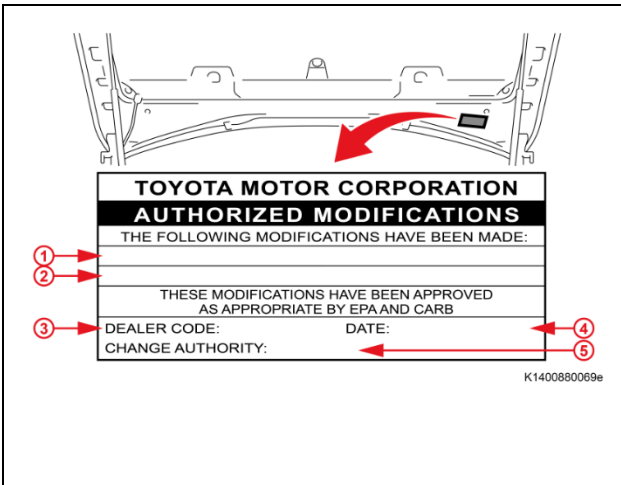
vii. Print Customer Health Check Report from TIS.

viii. Sign and provide to the customer.

22TD01 Expired on November 17, 2024

10. ATTACH THE AUTHORIZED VEHICLE MODIFICATION LABEL

- A. Fill out the label.
- B. Affix the label to the under-side of the hood.



The authorized modification label only needs to have the EV Control ECU Information.

1	Repair ECU P/N*
	#####-#####
	#####-#####
Part # varies by/depends on the vehicle model and specifications.	
2	New EV Control ECU Calibration ID
3	Dealer Code
4	Date Completed
5	Campaign Code (xxx)

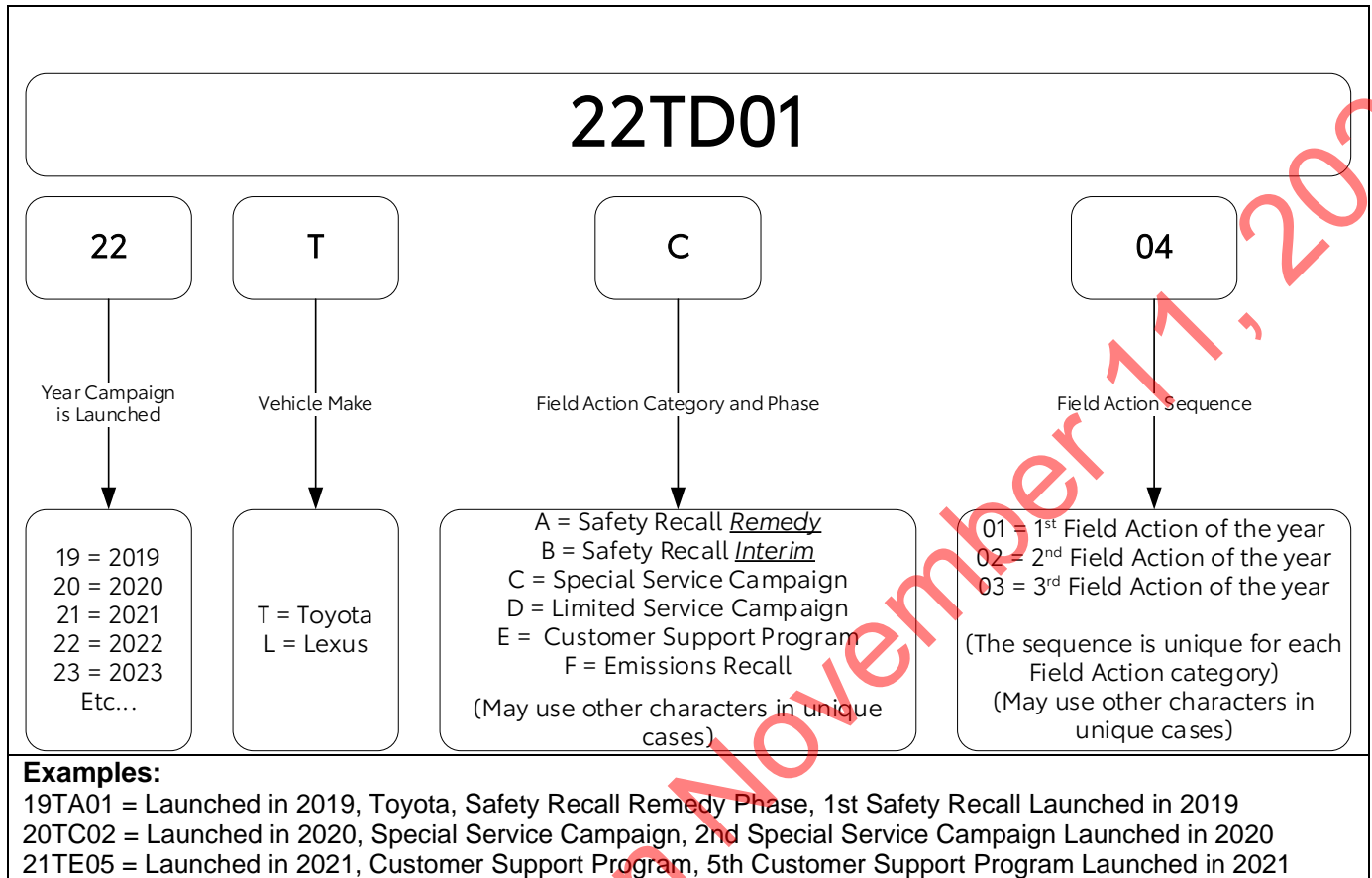
◀ VERIFY REPAIR QUALITY ▶

- Confirm the system Calibration has been updated successfully.
- Confirm there are no DTC's after the Calibration update.

22TD01 Expired on November 11, 2024

11. APPENDIX

A. CAMPAIGN DESIGNATION DECODER



22TD01 Expired on November 17, 2024