



Service Bulletin 622

Issue 1 - 11.2024

Subject: Fuel Level Sender Replacement			
Bulletin Number	Models Affected	VIN Range	Markets Affected
622	Tiger 1200 GT Pro	From VIN BP6056 to VIN CA4627	All Markets
	Tiger 1200 Rally Pro	From VIN BP6056 to VIN CA4302	
	Tiger 1200 GT Explorer	From VIN BP6056 to VIN CA3861	
	Tiger 1200 Rally Explorer	From VIN BP6056 to VIN CA4331	

Background Information

Dealers are requested to replace the fuel level sender as described in the procedure below.

Customer Contact Instructions

Motorcycles in the affected VIN range must have this Service Bulletin completed prior to delivery to the customer, or at the next visit to the dealership.

Identification of Affected Motorcycles

Tiger 1200 GT Pro, Tiger 1200 Rally Pro, Tiger 1200 GT Explorer and Tiger 1200 Rally Explorer models in the above VIN range.

NOTICE

Some affected motorcycles listed in the VIN range will have been reworked by Triumph prior to their release from the factory.

Unmodified motorcycles can be identified by checking the 'VIN Enquiry' on www.triumphonline.net.

Warranty Claim Instructions

Bulletin Number	Fault Code	Repair Code	Description	Repair Allowance	Time
622	024022922	99622	Replace the fuel level sender	0.85 Hrs	

Genuine Parts Information

Bulletin Number	Models	Part Number	Description	Quantity
622	Tiger 1200 GT Pro, Tiger 1200 Rally Pro	T2407101	<p>Spares Kit 1, Fuel level sensor, Seal</p> <p>Consisting of:</p> <p>Fuel level sender</p> <p>- Qty 1</p> <p>Fuel pump module seal, E25</p> <p>- Qty 1</p> <p>Flanged locknut, M6x1.0</p> <p>- Qty 1</p> <p>Screw, BUT/HD, M5x12, SLV, ENC</p> <p>-Qty 2</p>	1
622	Tiger 1200 GT Explorer, Tiger 1200 Rally Explorer	T2407424	<p>Spares Kit 2, Fuel level sensor, Seal</p> <p>Consisting of:</p> <p>Fuel level sender</p> <p>- Qty 1</p> <p>Fuel pump module seal, E25</p> <p>- Qty 1</p> <p>Flanged locknut, M6x1.0</p> <p>- Qty 1</p>	1

Parts Ordering Instructions

For Triumph Subsidiary and Overseas Distributor dealers using Triumph Warranty On-Line with Parts Auto Ordering Flag switched on: Order all repair parts by submitting a New Prior through the Warranty On-Line system. Entering the above repair code in a New Prior will automatically add the parts required and labour times for this Service Bulletin.

For Overseas Distributor dealers NOT using Triumph Warranty On-Line or for Overseas Distributor dealers using Triumph Warranty On-Line with Parts Auto Ordering Flag switched off: Orders should be placed using the normal parts ordering procedure.

Genuine Parts Return

Dealer to retain parts for 90 days. All parts must be stored in a secure, non-public accessed area and correctly identified with a completed warranty label. Thereafter the parts must be rendered unusable prior to scrapping.

Other Instructions

Once completed, please mark the Service Record Book that the requirements of this bulletin have been complied with.

Before returning the motorcycle to the customer, download the latest calibration using the current version of the Triumph diagnostic software to the following:

- Engine electronic control module
- Chassis electronic control module (if fitted)
- Keyless electronic control module (if fitted)
- Suspension electronic control module (if fitted)
- Connectivity module (if fitted)
- Instruments (if applicable).

Replace the Fuel Lever Sender

WARNING

Make sure the motorcycle is stabilised and adequately supported.

Do not support the motorcycle on any ancillary component, the exhaust system or any other non structural parts of the motorcycle frame.

A correctly supported motorcycle will help prevent it from falling.

Failure to follow the advice above could result in serious injury or death.

WARNING

Observe the warning advice given in the General Information section on the safe handling of fuel and fuel containers.

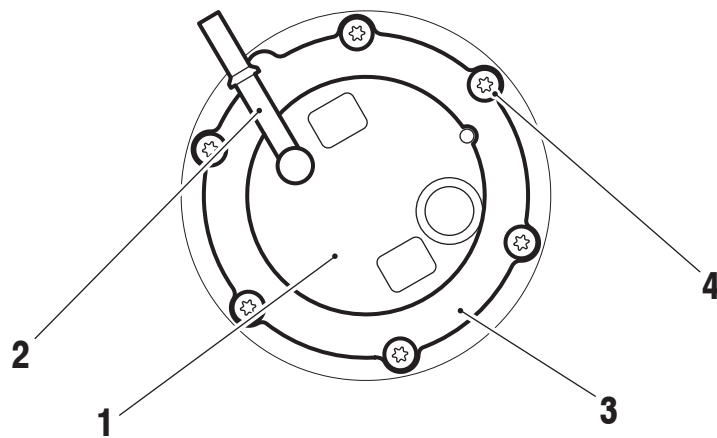
Before disconnecting any fuel lines, make sure the engine and exhaust system has cooled down.

Failure to follow the advice above could risk a fire, which could result in serious injury or death.

Perform the following operations:

- Remove the seats as described in the Service Manual.
- Disconnect the battery, negative (black) lead first.
- Remove the side panels as described in the Service Manual.
- Remove the fuel tank as described in the Service Manual.

1. Invert the fuel tank and place on a protective surface to prevent paint damage.
2. Remove the fixings securing the fuel pump mounting plate to the fuel tank.
3. Remove the mounting plate.



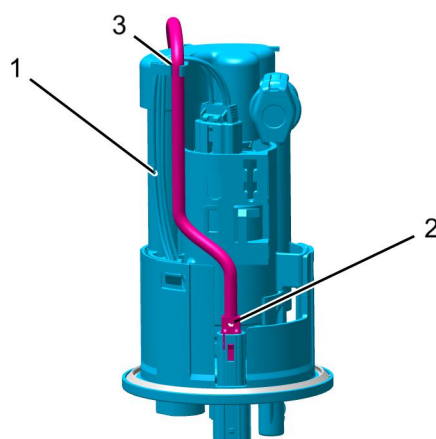
cguc

1. **Fuel pump assembly**
 2. **Fuel pump spigot**
 3. **Mounting plate**
 4. **Mounting plate fixings**
4. Lift the fuel pump assembly and manoeuvre it from the fuel tank aperture.

NOTICE

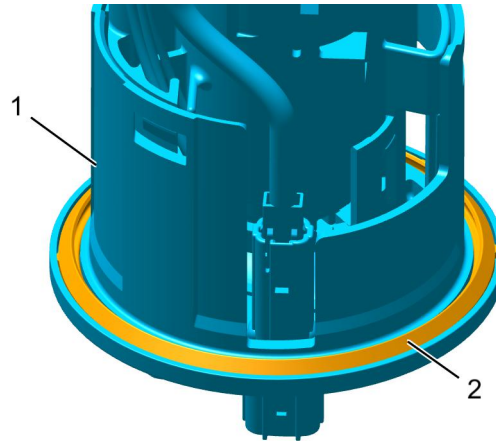
Note the routing and orientation of the fuel level sender harness for installation.

5. Disconnect the fuel level sender electrical connector.
6. Remove the fuel level sender harness from the harness guide on the fuel pump assembly.
7. Remove the fuel pump assembly.



1. **Fuel pump assembly**
2. **Fuel level sender electrical connector**
3. **Harness guide**

8. Noting its orientation, remove and discard the seal from the fuel pump assembly.

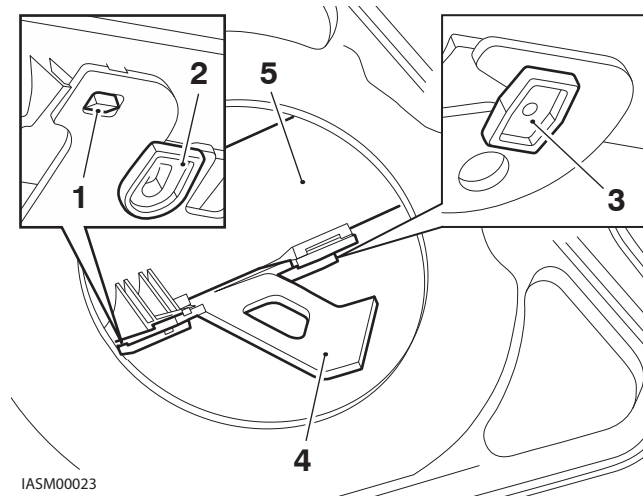


1. Fuel pump assembly
2. Seal

NOTICE

The mounting for the fuel level sender is located inside the fuel tank.

9. Release the locking device and detach the first retaining clip of the fuel level sender from the bracket.
10. Pivot the fuel level sender towards the fuel tank opening.
11. Detach the second retaining clip from the bracket and remove the fuel level sender.



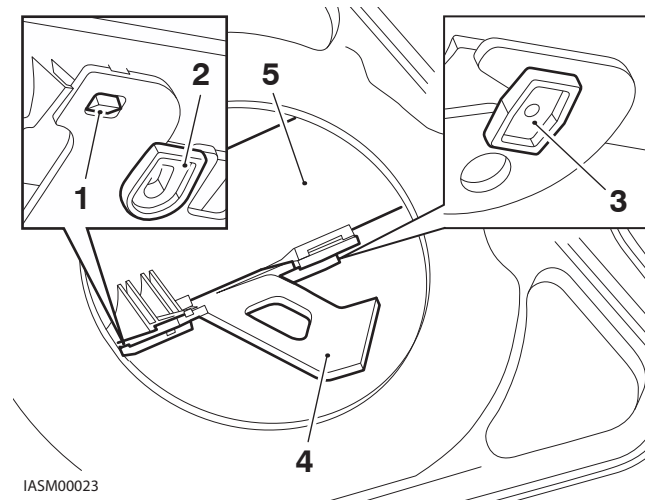
1. Locking device
2. First retaining clip
3. Second retaining clip
4. Bracket
5. Fuel level sender

12. Collect the new fuel level sender from the spares kit.

NOTICE

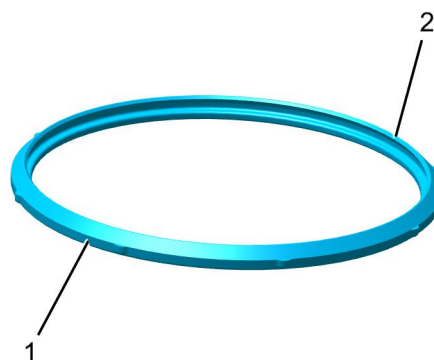
Make sure the locking device is engaged to secure the fuel level sender.

-
13. Position the fuel level sender into the tank aperture.
 14. Engage the second retaining clip to the bracket.
 15. Engage the first retaining clip to the bracket.
 16. Gently push against the fuel level sender unit to make sure that it is secure and that both clips are fully engaged onto the bracket.



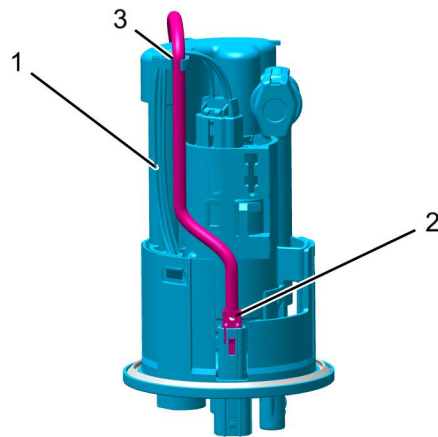
1. Locking device
2. First retaining clip
3. Second retaining clip
4. Bracket
5. Fuel level sender

17. Collect the new fuel pump assembly seal from the spares kit and install into the fuel pump assembly, with the seal lip facing uppermost.



1. Sealing ring
2. Seal lip

-
18. Route the fuel level sender harness as noted during removal.
 19. Connect the fuel level sender electrical connector.
 20. Secure the fuel level sender harness into the harness guide as noted during removal.



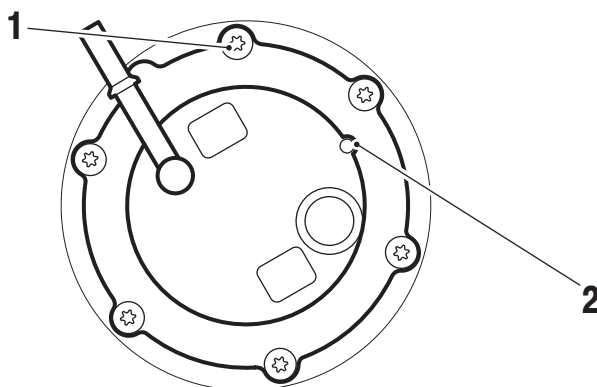
1. Fuel pump assembly
2. Fuel level sender electrical connector
3. Harness guide

NOTICE

Make sure the seal is not damaged or dislodged during fitment.

21. Manoeuvre the fuel pump assembly into the tank aperture.

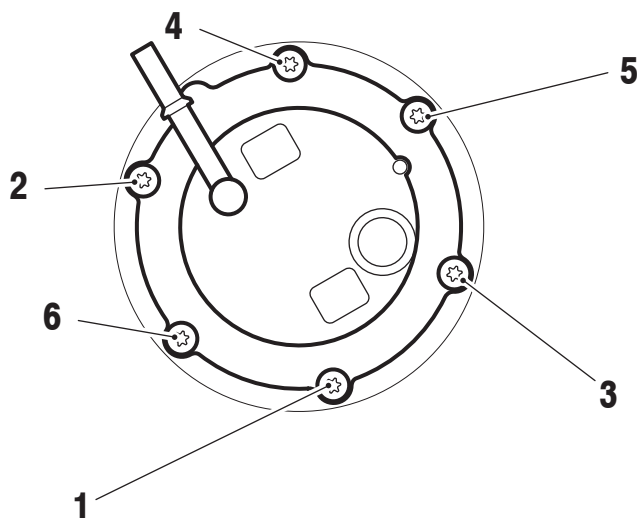
22. Align the locating peg on the fuel pump assembly to the cut out on the mounting plate. Make sure the offset hole is positioned as shown below.



cguc_4

1. Offset hole position
2. Locating peg

23. Tighten the fixings in the sequence shown to **6 Nm**.



cguc_5

1. Torque sequence

Perform the following operations:

- Fit the fuel tank, tightening the new locknut from the spares kit to **5 Nm** as described in the Service Manual.
- Connect the battery, positive (red) lead first.
- Start the engine and let the engine idle for several minutes, check carefully for fuel leaks. Rectify as necessary.
- Fit the side panels as described in the Service Manual.
- Fit the seats as described in the Service Manual.