

DETROIT
CONNECT
SAFETY PLUS



Detroit Connect Safety Plus

What is it?

Safety Plus provides the system status of Detroit Assurance safety features in the Detroit Connect Portal. Whether the radar unit is blocked by debris, experiencing a fault, or even shot off by a driver, Safety Plus will report the status by vehicle or for the entire fleet. In addition, customers can set up email notifications when any safety features become unavailable.

Users can view system status for the following active safety features:

- Active Brake Assist 5 and 6
- Lane Departure Warning
- Lane Departure Protection
- Side Guard Assist
- Lane Keep Assist
- Traffic Sign Display
- Roll-away mitigation

Statuses include:

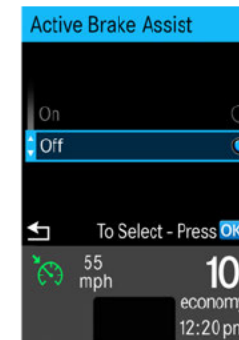
- Available when the system is functioning
- Unavailable when it's been disabled by a fault
- Driver disabled when it's been switched off by an optional dash switch
- No data when the sensor is not receiving inputs

Why is it important?

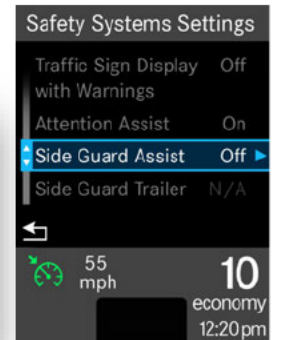
Gives fleets visibility and transparency to safety system health, status, and functionality. Safety managers can pinpoint accident types and rates to effectiveness of safety systems and review historical system status by unit. Maintenance teams can be alerted to faults that also disable safety systems (most commonly ABS codes). And driver trainers can coach drivers on pre-trip processes to ensure radar and camera are not obstructed, or on when they should or shouldn't be disabling systems (if applicable). Safety Plus is available on all DTNA truck models with Detroit Assurance.

Various factors like ABS faults or optional driver disable switches can prevent active safety systems from functioning. Safety Plus gives fleets visibility to this.

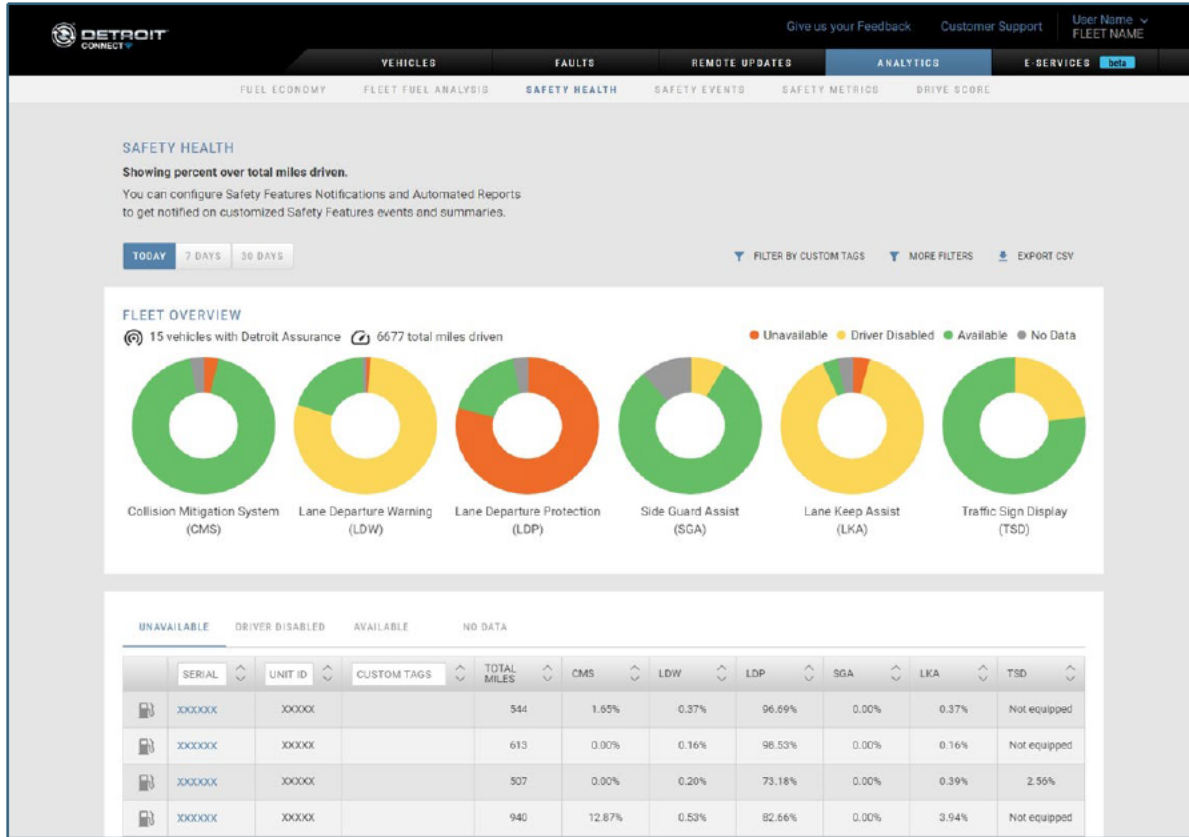
Known Limitations



Optional Disable Switches



Detroit Connect Safety Plus



Safety Plus home page

Your Safety Feature report is ready to view

YOUR SAFETY FEATURE WEEKLY SUMMARY

Please follow the link below to view your report from Sunday, January 27th, 2022 to Sunday, February 6th, 2022.

Unit NC0185: Collision Mitigation System Safety Feature is Unavailable

Unit ID	NC0185
Serial	LS1580
VIN	1FUJGLD1SHLLS1580
Vehicle Type	Diesel
Custom Tags	2019, New Cascadia, Sleeper, Washington
Safety Feature Reported	Collision Mitigation System
Safety Feature Status	Unavailable
Status Timestamp	02/08/2022 10:09:59 AM PST

Notes:

The Collision Mitigation System Safety Feature on 1FUJGLD1SHLLS1580 is unavailable as of 02/08/2022 10:09:59 AM PST. For more information, please refer to the vehicle's Fault section on Detroit Connect Portal.

[GO TO DETROIT CONNECT](#)

This message was sent from an unmonitored address. Please do not respond to this email. You have received this email as a contact assigned to Active Brake Assist Notifications for this vehicle. To manage your notification preferences, please go to the Notifications page Detroit Connect Portal Settings or contact your account administrator.

Emailed weekly safety report

Email notification



Detroit Connect Safety Plus

Key Features:

- First OEM in the market offering Safety Feature health status using proprietary signals
- Provides operational transparency to the health and functionality of the Safety Systems
- Reassurance that Safety Systems are functioning as intended
- Allow more Safety data for Analysis by expanding the signals
- Provides driver coaching opportunities to help improve fleet safety

Start of Production Date:

All models: February 2024
Fifth generation Cascadia: Mid 2025

Affected models:

Freightliner fourth and fifth generation Cascadia, M2 Plus, 108SD and 114SD Plus
Western Star 47X, 49X, 57X

Package: Included in the Connect Core package

Data Codes:

8D1-235	5 YEARS DETROIT CONNECT CORE PACKAGE (FEATURES VARY BY MODEL) DETROIT POWERTRAIN	Standard (All other truck models)
8D1-335	5 YEARS DETROIT CONNECT CORE PACKAGE (FEATURES VARY BY MODEL) CUMMINS POWERTRAIN	Optional
8D1-245	5 YEARS DETROIT CONNECT PLUS PACKAGE (FEATURES VARY BY MODEL) DETROIT POWERTRAIN	Standard (5 th Gen Cascadia)

Compatibility: Requires Detroit Assurance with ABA5 or newer

