



SPYDER 2024 No Reverse When Hot - 142594

[Printable Version](#)

Rate This Article

(Average Rating: 4.36)

[Version 2](#)

Language English

[Show Properties](#)**Summary:**

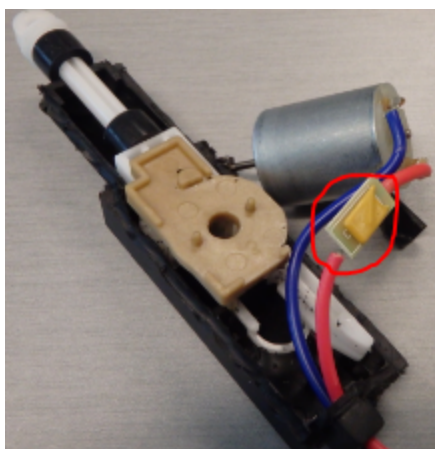
Engineering is currently investigating a reverse gear not engaging when the unit is hot

Type:

General

TST Detail:**Problem:**

The Reverse Gear fails to engage when the unit is hot. Our test confirms that some reverse actuators failed because of the internal thermal protection is too sensitive.

**Solution:**

As a temporary solution, the previous model year P/N 710003776, 219800554 can be used on MY24 until we have revised parts. Use the dealer locator to find these parts.

Inspection Procedure:

The reverse lever installed on the gearbox should not exceed 3kg to pull. You can use a fish scale to check

Warranty:

Regular warranty applies

Attachment:

First Published By: Marc Andre Beaubien on 2024-05-30

Last Modified By: Eric Fauteux on 2024-11-04