



# HYUNDAI

## Technical Service Bulletin

GROUP <b>CAMPAIGN</b>	NUMBER <b>24-01-069H</b>
DATE <b>NOVEMBER 2024</b>	MODEL(S) <b>SANTA FE (MX5A)</b>

**SUBJECT:** ECU SOFTWARE UPDATE FOR DTC P060547  
(SERVICE CAMPAIGN 9B2)

### ★ IMPORTANT

Dealers must perform this service campaign on all affected vehicles prior to customer retail delivery and whenever an affected vehicle is in the shop for any maintenance or repair.

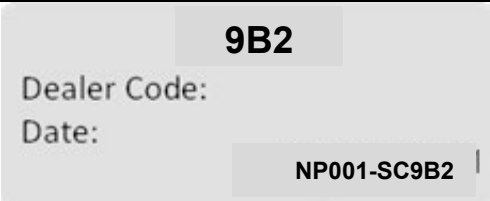
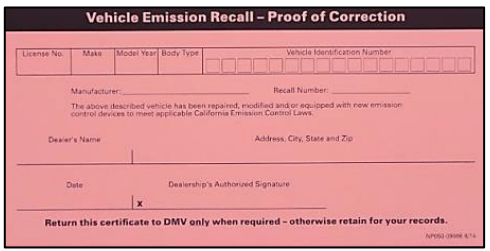
Access the "Vehicle Information" screen via WebDCS to identify open campaigns.

**Description:** Certain 2024MY Santa Fe (MX5A) vehicles equipped with a Theta III, 2.5L T-GDI engine may exhibit DTC P060547 (Internal Control Module Read Only Memory [ROM] Error). The vehicle may be operating normally, other than a delayed oil level warning light/message caused by errors in the oil level calculation process. Follow the procedure in this bulletin to update the Engine Control Module (ECM) software logic.

### Applicable Vehicles (Certain):

- 2024MY Santa Fe (MX5A) equipped with Theta III, 2.5L T-GDI engine, produced 12/28/2023–8/23/2024

### PARTS INFORMATION:

Part Name	Part Number	Qty	Figure	Remarks
Campaign Sticker	NP001-SC9B2	1	 <p><b>9B2</b> Dealer Code: Date: <b>NP001-SC9B2</b></p>	Apply to all vehicles regardless of state.
Vehicle Emission Recall - Proof of Correction Card	NP050-09006	1	 <p><b>Vehicle Emission Recall – Proof of Correction</b></p>	Order only for states: CA, CO, CT, DE, ME, MD, MA, NJ, NY, OR, PA, RI, VT, WA

### GDS Information:

System	Event #	Description
ECM	1088	MX5a THETA3 2.5TGDI MIL ON DTC JUDGMENT LOGIC IMPROVEMENT (P060547)

(\*or use a later available event as listed in the GDS ECM System Update screen if one is available.)

Circulate To: General Manager, Service Manager, Parts Manager, Warranty Manager, Service Advisors, Technicians, Body Shop Manager, Fleet Repair

**Warranty Information:**

Model	Op. Code	Operation	Op. Time	Casual Part	Nature Code	Cause Code
Santa Fe (MX5A)	40DA02R0	ECU Software Update and Campaign Sticker Installation	0.4 M/H	39103-2S007	I14	ZZ3

**NOTE 1:** Submit claim on Claim Entry Screen as “Campaign” type.

**NOTE 2:** If a part is found in need of replacement while performing this campaign and the affected part is still under warranty, submit a separate claim using the same repair order. If the affected part is out of warranty, submit a Prior Approval request for goodwill consideration prior to performing the work.

**NOTE 3:** This TSB includes Repair validation photos. Op times include VIN, Mileage, and Repair validation photo(s) as outlined in the Digital Documentation Policy.

**ROM ID Information Table:**

Model	System	ECU Part Number	ROM ID	
			Old	New
2024MY Santa Fe (MX5A)	ECM	39103-2S006	MXFVN5TKU3XXX92A	MXFVN5TKU3XXX97A
		39103-2S007	MXFVN5TKU3TXX92A	MXFVN5TKU3TXX97A
		39103-2S008	MXFVN5TKU3HXX92A	MXFVN5TKU3HXX97A
		39103-2S031	MXFVN5TKG3XXX92A	MXFVN5TKG3XXX97A
		39103-2S032	MXFVN5TKG3TXX92A	MXFVN5TKG3TXX97A
		39103-2S033	MXFVN5TKG3HXX92A	MXFVN5TKG3HXX97A
		39103-2S009	MXFZN5TMU3XXX92A	MXFZN5TMU3XXX97A
		39103-2S034	MXFZN5TMG3XXX92A	MXFZN5TMG3XXX97A

**Service Procedure:****STUI**

This TSB includes Repair validation photos. Refer to the latest Warranty Digital Documentation Policy for requirements.

**NOTICE**

For vehicles registered in certain states, a **Vehicle Emission Recall - Proof of Correction** card must be filled out by the Service Manager and given to the vehicle owner upon completion of the campaign. A **Campaign Sticker** must also be filled out and placed on the hood of the vehicle. Refer to pages 6 and 7 for more details.

For all vehicles, a **Campaign Sticker** must be filled out and placed under the hood of the vehicle. Refer to page 6.

## NOTICE

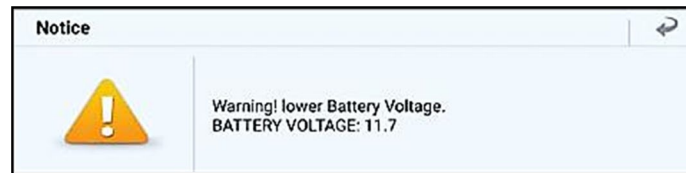
**You must initially perform the GDS ECU update in Auto Mode.**

- If the ECU update starts but then fails in Auto Mode, perform the update in Manual Mode to recover.

## NOTICE

**GDS Vehicle Battery Low Voltage Warning:**

If voltage is below 12 volts per the GDS warning, then select **Back** and attach a battery charger to ensure an adequate battery charge for reliable update results. Turn ignition back **ON**, and then retry the ECU update again.



## ECU Update

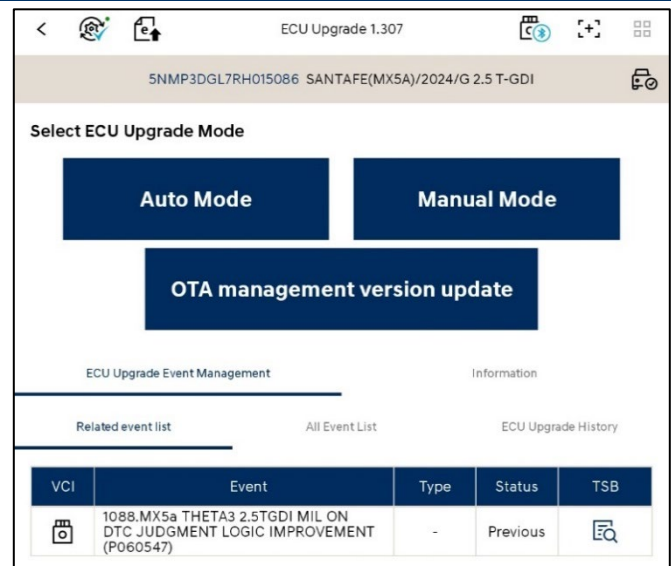
1. Perform the ECU update in Auto Mode.

Use the **ID Check** to verify the ROM ID before updating the software.



### Information

Refer to TSB 24-GI-012H for the ECU update procedure for Tablet-Based GDS-Smart.



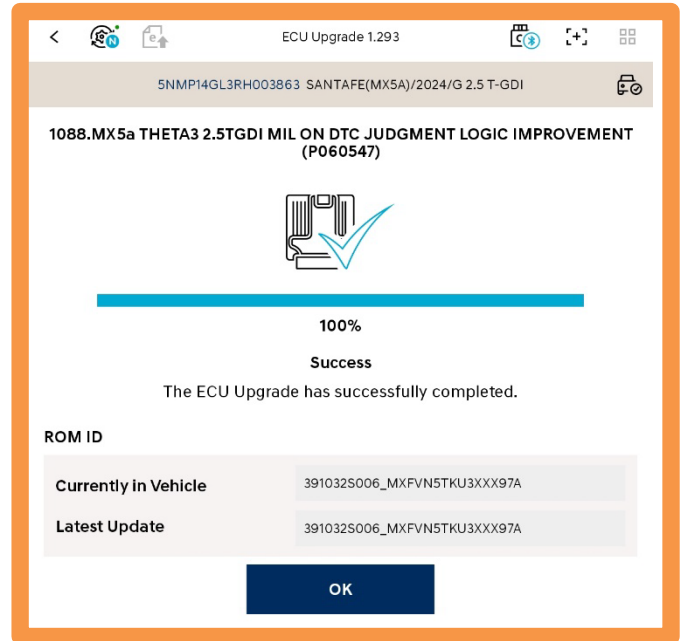
2. After the ECU update process shows 100% complete, cycle the ignition key to **OFF** for at least 10 seconds to reset the control unit.

3.

**STUI**



Take a screenshot of the ECU update complete screen using your tablet and upload to STUI.



4. Perform an **All Systems Fault Code** search and erase DTC history that had incidentally occurred from the ECU update.
5. Start the engine to confirm proper operation of the vehicle.
6. Proceed to **Campaign Sticker Application (for All Vehicles)** on page 6.

**Manual Mode Password:**

ECM Menu	Password
MX5A THETA3 2.5TGDI ECU 39103-2S006	6002
MX5A THETA3 2.5TGDI ECU 39103-2S007	7002
MX5A THETA3 2.5TGDI ECU 39103-2S008	8002
MX5A THETA3 2.5TGDI ECU 39103-2S031	1302
MX5A THETA3 2.5TGDI ECU 39103-2S032	2303
MX5A THETA3 2.5TGDI ECU 39103-2S033	3302
MX5A THETA3 2.5TGDI ECU 39103-2S009	9002
MX5A THETA3 2.5TGDI ECU 39103-2S034	4302

## Campaign Sticker Application (for All Vehicles)

1. Fill in the Dealer Code and Date on the Campaign Sticker, and apply adjacent to the existing Emission Label, on the underside of the hood, as shown.

Be sure to clean the mounting surface to ensure proper label adhesion.



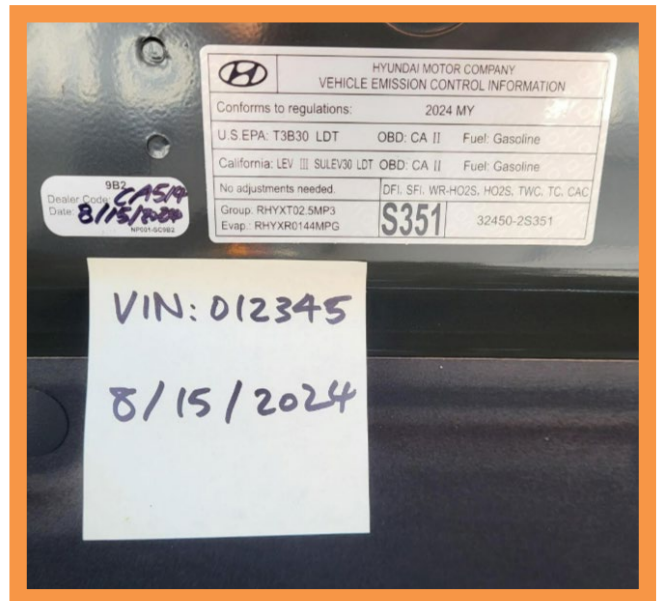
- 2.

**STUI**



Using STUI, take a clear photo of the campaign sticker along with the last 6 digits of the VIN and the date of repair on a piece of paper.

Upload the photo to STUI.



3. Proceed to next section and complete the **Vehicle Emission Recall - Proof of Correction Card** for the states listed.

If not applicable to your state, the repair process is complete.

**Vehicle Emission Recall – Proof of Correction Card (for Vehicles Registered in Certain States)**

**For vehicles registered in California, Colorado, Connecticut, Delaware, Maine, Maryland, Massachusetts, New Jersey, New York, Oregon, Pennsylvania, Rhode Island, Vermont, and Washington:**

**VEHICLE EMISSION RECALL - PROOF OF CORRECTION CARD**

A Vehicle Emission Recall - Proof of Correction card must be filled out for all vehicles registered in California, Colorado, Connecticut, Delaware, Maine, Maryland, Massachusetts, New Jersey, New York, Oregon, Pennsylvania, Rhode Island, Vermont, and Washington. Residents of these states, who own an affected vehicle, will be required to possess a Vehicle Emission Recall - Proof of Correction card as evidence of voluntary service campaign completion, when they apply for vehicle registration renewal.

**WHAT TO DO WITH THE CARD:**

The Vehicle Emission Recall - Proof of Correction card must be completed by the Dealership's Service Manager using a permanent ink pen. A fine point pen is recommended. When filling in the information, copy the information directly from the vehicle, not from the repair order.

ALL INFORMATION MUST BE PRINTED AND NEAT.

The copy of the card shown below indicates the areas to be filled in. Each area must be filled in.

**The completely filled out Vehicle Emission Recall - Proof of Correction card should be given to the owner of the vehicle upon completion of the Campaign.**

1. Enter Vehicle's License Number
2. Enter "Hyundai"
3. Enter Model Year
4. Enter "Santa Fe"
5. Enter the vehicle's VIN Number
6. Enter "9B2"
7. Enter Dealership Name
8. Enter Dealership's Address  
**NOTE:** Enter the physical address, not the mailing address (not a P.O. Box)
9. Enter Date of Repair
10. Service Manager Sign Here

Vehicle Emission Recall – Proof of Correction									
License No.	Make	Model Year	Body Type	Vehicle Identification Number					
1	2	3	4					5	
Manufacturer:			2	Recall Number:			6		
The above described vehicle has been repaired, modified and/or equipped with new emission control devices to meet applicable California Emission Control Laws.									
Dealer's Name				Address, City, State and Zip					
7				8					
Date				Dealership's Authorized Signature					
9				x 10					
Return this certificate to DMV only when required – otherwise retain for your records.									
NP050-09006 8/14									